

410 | ALLEN STREET



For Lease

14,000 SF INDUSTRIAL SPACE | ELIZABETH, NJ, NEW JERSEY

Jordan Metz
Senior Vice President
973.493.0385
jordan@metzindustrial.com

Benito Abbate
Senior Associate
908.655.8331
ben@metzindustrial.com

James Friel
Sales Associate
908.305.9001
james@metzindustrial.com



Bussel
Realty

Metz
Industrial Group

Contact Us

Exclusive Brokers:

Jordan Metz
Senior Vice President
973.493.0385
jordan@metzindustrial.com

Benito Abbate
Senior Associate
908.655.8331
ben@metzindustrial.com

James Friel
Sales Associate
908.305.9001
james@metzindustrial.com



14,000 SF Industrial Space with a large local
workforce and direct access to Newark Liberty
Airport and the Elizabeth/Newark Ports.

Property Highlights



Total Building 67,000 SF
14,000 SF Available
750 SF Office Space
1.29 Acre Site

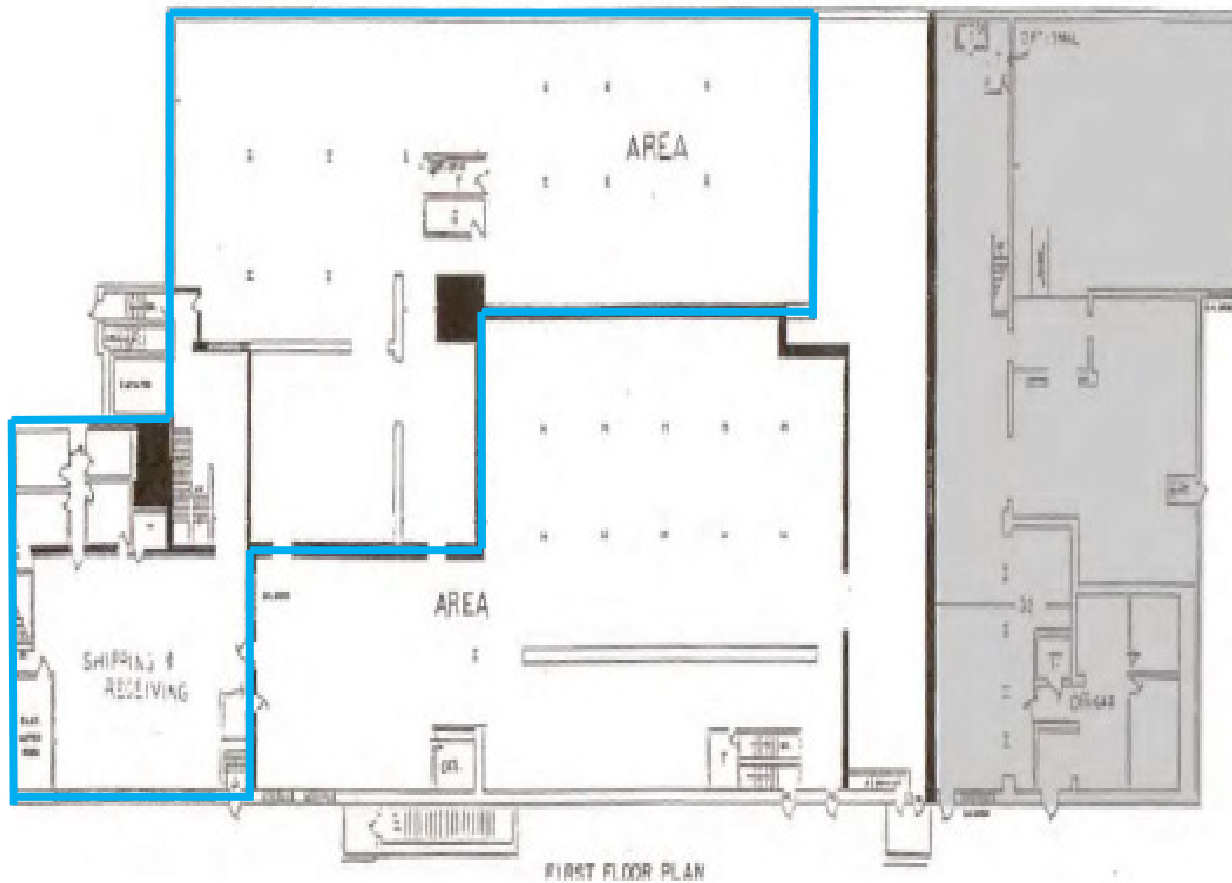
4 Tailboards
24' Ceiling Height
New Renovations & New Lighting

400 Amp Electric Power
Wet Sprinklers
Gas Heat
15 Car Parking

1 Mile to I-278,
2 Miles to NJ Turnpike
3 Miles to Route 1-9

Close Proximity to Port
Newark/Elizabeth, Newark
Liberty Airport & NYC Markets

Floor Plans



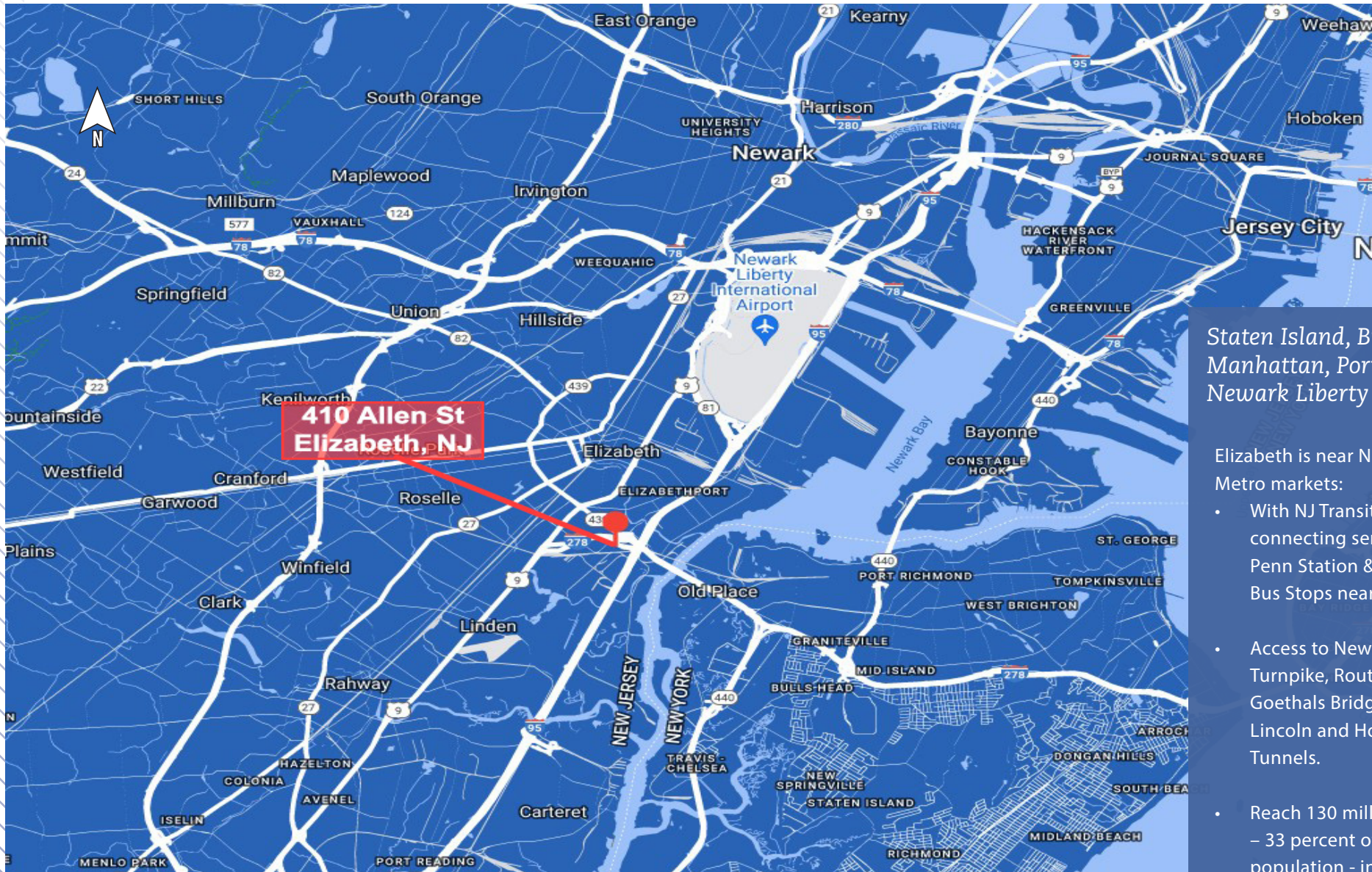
Ground Floor

- 38,000 SF Total
- 14,000 SF Available
- 24' Ceilings
- 4 Loading Docks
- Heavy Power
- 1,000 SF Office

NJ Turnpike Access



At the Crossroads of...

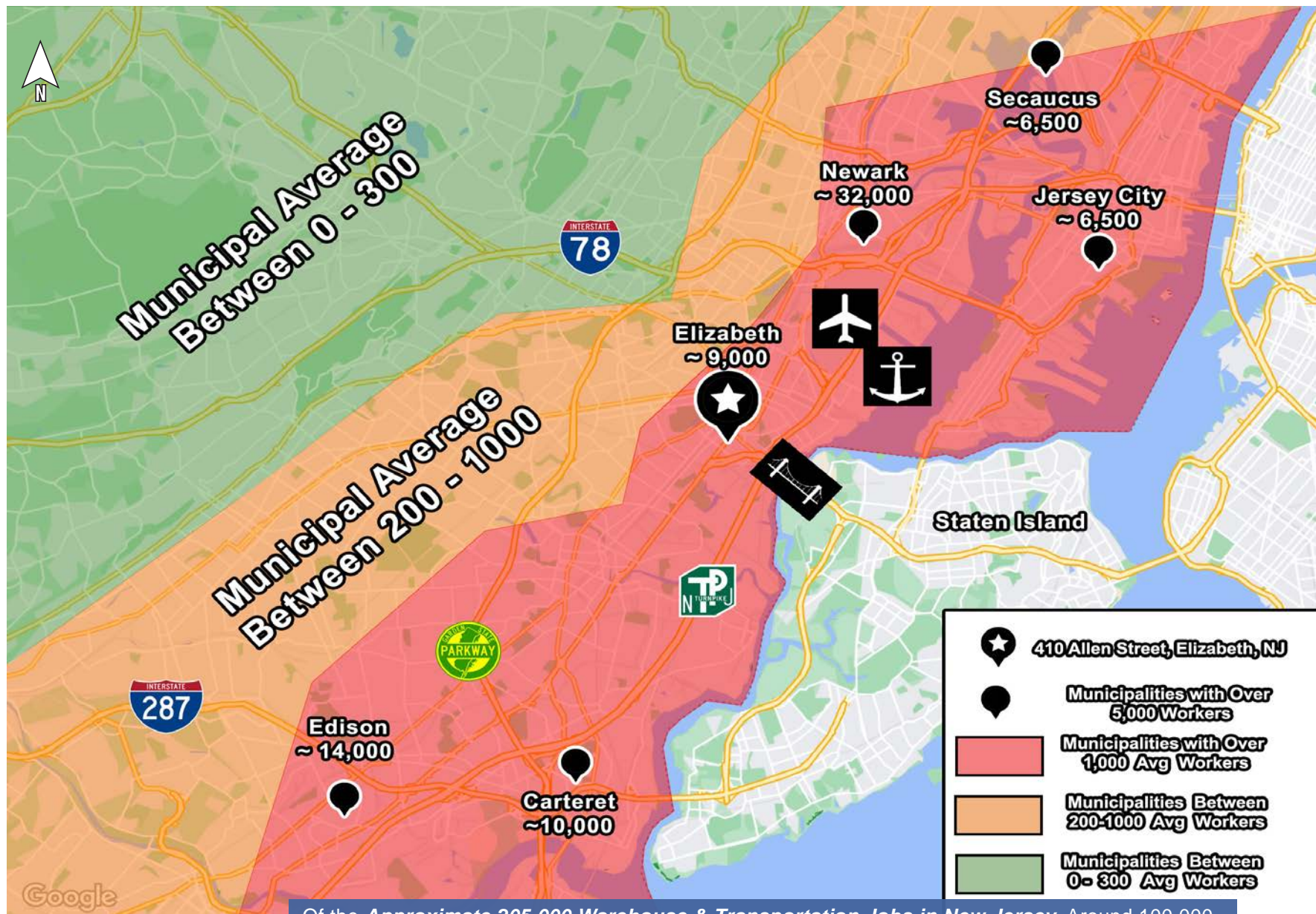


Staten Island, Brooklyn, Manhattan, Port Newark, Newark Liberty Airport,

Elizabeth is near New York Metro markets:

- With NJ Transit Station with connecting service to NY Penn Station & NJ Transit Bus Stops near the site.
- Access to New Jersey Turnpike, Route 1-9, Goethals Bridge, I-78, Lincoln and Hollands Tunnels.
- Reach 130 million people – 33 percent of the US population - in 24 hours.

Labor Demographics



410 Allen Street | Elizabeth, NJ

Of the *Approximate 205,000 Warehouse & Transportation Jobs in New Jersey*, Around 100,000 of them are in the greater area Elizabeth area with hubs in Edison, Carteret, and Newark.

Data From the N.J. Census 2022

NJ Transit Northeast Corridor Line



~2 Miles to NJ Transit Rail Station in Elizabeth

Demographic Highlights



Household Income

- In 2021, Elizabeth, NJ had a population of 135,772 people with a median age of 35 and a median household income of \$54,415.
- The median household income increased from \$50,605 to \$54,415, a +7.44% growth.
- In 2021, the median property value in Elizabeth, NJ was \$314,500, and the homeownership rate was 25.3%.



Business Environment

- The economy of Elizabeth, NJ employs 65,900 people.
- The largest industries in Elizabeth, NJ are Health Care & Social Assistance (7,815 people), Transportation & Warehousing (10,779 people), and Manufacturing (6,729 people)
- The highest paying industries are Construction (\$105,529), Professional, Scientific, & Technical Services (\$119,907), and Public Administration (\$96,759).



410 | ALLEN STREET

For more information please contact:

Jordan Metz
Senior Vice President
973.493.0385
jordan@metzindustrial.com

Benito Abbate
Senior Associate
908.655.8331
ben@metzindustrial.com

James Friel
Sales Associate
908.305.9001
james@metzindustrial.com



This document has been prepared by Bussel Realty Corp. based on public information. Bussel Realty Corp. makes no guarantees, representations or warranties of any kind, expressed or implied, regarding the information including, but not limited to, warranties of content, accuracy and reliability. Any interested party should undertake their own inquiries as to the accuracy of the information. Bussel Realty Corp. excludes unequivocally all inferred or implied terms, conditions and warranties arising out of this document and excludes all liability for loss and damages arising there from. This publication is the copyrighted property of Bussel Realty Corp. and/or its licensor(s).

© 2021. All rights reserved.