

# Prime Office Space For Lease



## 116 South River Road Building E

Bedford NH

### Property Features

- 2,129 ± SF
- High profile professional office suite at Coldstream Office Park
- Performance Zoning
- Excellent access to Rts101, I-93 and I-293 at Kilton Road exit
- Property is owned by Brokers

**Lease Rate \$19.50 PSF Mod Gross**  
**Including Taxes and CAM**

Click [here](#) for more information.



# NAINorwood Group

The information contained herein has been given to us by the owner of the property or other sources we deem reliable, we have no reason to doubt its accuracy, but we do not guarantee it. All information should be verified prior to purchase or lease.

**Louise Norwood**

603 657 1932 [louise@nainorwoodgroup.com](mailto:louise@nainorwoodgroup.com)

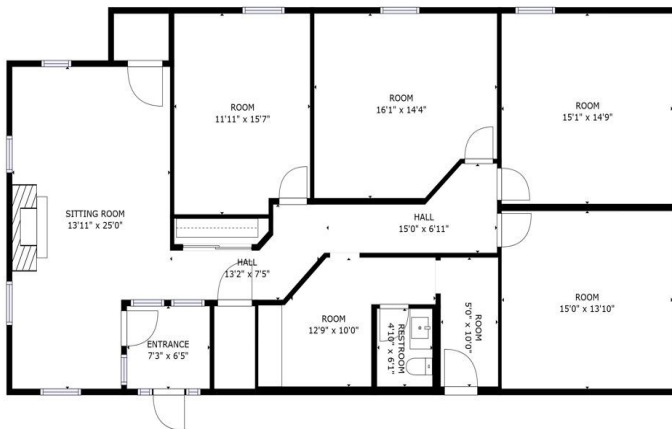
116 South River Road  
Bedford NH 03110  
+1 603 668 7000  
[nainorwoodgroup.com](http://nainorwoodgroup.com)



**116 South River Road  
Bedford NH**



Highly sought after office suite in the classic Coldstream Park with Williamsburg architectural overtones. The three sided window line brings in natural light with views to the water and nicely landscaped grounds sharing common land with the iconic Woodbury Estate. Generously sized offices are handsomely decorated with reception having former fireplace with its own private entrance. The building has other professional office users all within a well established office park. Bedford amenities such as Trader Joe's, Whole Foods, The Manchester Country Club and plentiful restaurants are conveniently situated at the doorstep. Great access in all directions via convenient exit points. Owner/broker interest.



**Lease Rate \$19.50 PSF Mod Gross  
Including Taxes and CAM**

**Louise Norwood**

603 657 1932

[louise@nainorwoodgroup.com](mailto:louise@nainorwoodgroup.com)

**NAINorwood Group**  
*Celebrating 50 years of Excellence*

116 South River Road  
Bedford NH 03110  
+1 603 668 7000  
[nainorwoodgroup.com](http://nainorwoodgroup.com)