

**FOR SALE**

**7.25-ACRE REDEVELOPMENT OPPORTUNITY**



**2300 & 2312 LAKE LANSING RD, LANSING, MI 48912**



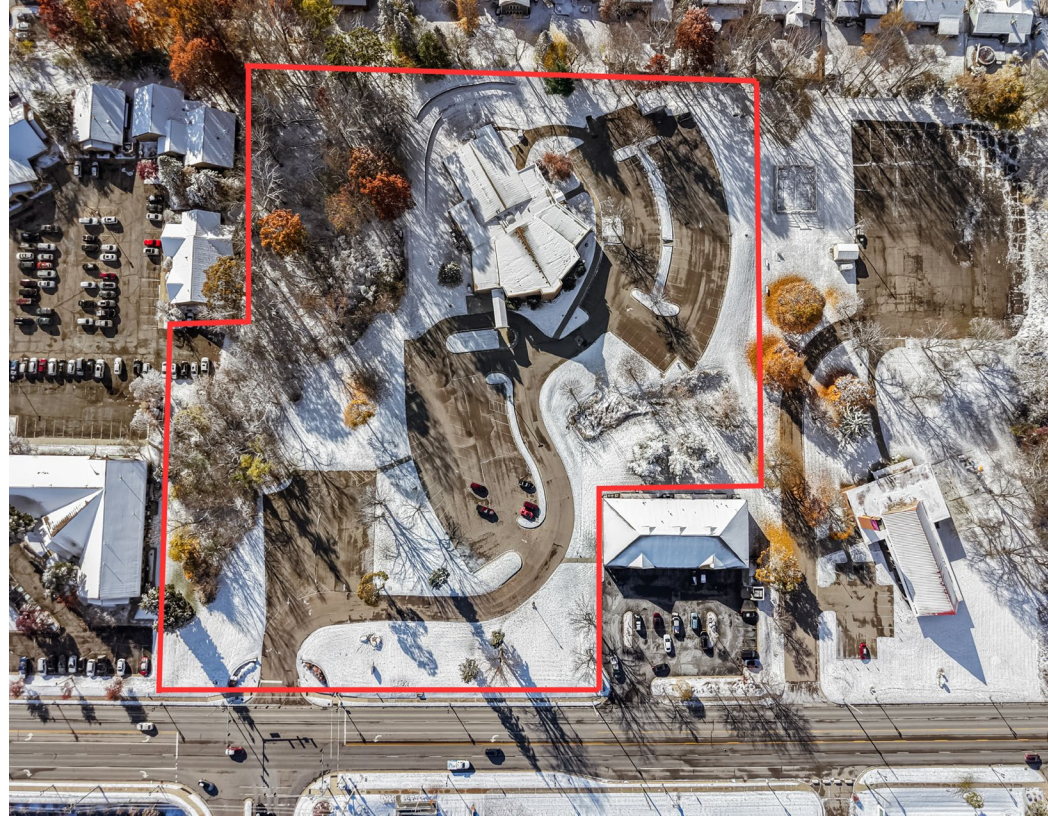
**MARC HAMES**  
SENIOR ASSOCIATE | BROKERAGE SERVICES  
P: 248.848.4177 E: MARC.HAMES@FREG.COM

34975 WEST TWELVE MILE ROAD | FARMINGTON HILLS, MI 48331

WWW.FRIEDMANREALSTATE.COM

## 2300 & 2312 LAKE LANSING RD PROPERTY HIGHLIGHTS

- **Prime Redevelopment Opportunity:** 7.25-acre site located at 2300 Lake Lansing Road in Lansing, MI. Ideal for mixed-use, retail, multifamily, or medical redevelopment.
- **Exceptional Visibility & Access:** Prominent frontage along Lake Lansing Road with dedicated traffic light access, ensuring easy ingress/egress and strong daily traffic counts.
- **Unmatched Location:** Directly across from Eastwood Towne Center, mid-Michigan's premier open-air shopping and entertainment destination featuring retail, dining, hotel, and residential components.
- **High-Density Trade Area:** Surrounded by national retailers, restaurants, apartments, and office users drawing consistent consumer traffic from Lansing, East Lansing, and nearby Michigan State University.
- **Strong Market Fundamentals:** Lansing's north retail corridor continues to see robust demand with limited available land – offering long-term value and multiple exit strategies for developers and investors.



## 2300 & 2312 LAKE LANSING RD

### PROPERTY HIGHLIGHTS (continued)

- **Development-Friendly Zoning & Site Configuration:** The parcel's generous size and existing infrastructure provide flexibility for a variety of redevelopment concepts – including retail, restaurant, medical, multifamily, or mixed-use (subject to municipal approvals).

**Sale Price** **\$4,400,000**

**Parcel IDs**  
21-01-02-302-010  
21-01-02-327-011  
21-01-02-327-009  
21-01-02-302-009

**# of Lots** **4**

**Acres** **7.25**

**Building Size** **14,000 SF**

**Parking** **165 surface spaces**

[CLICK FOR  
ZONING  
MAP](#)

The information provided herein along with any images or attachment(s) was obtained from sources believed to be reliable, however, Friedman Real Estate makes no guarantees, warranties, or representations as to the completeness or accuracy of such information and legal counsel is advised. All information provided is subject to verification and no liability for reliance on such information or errors or omissions is assumed. The presentation of this property is submitted subject to errors, omissions, change of price or conditions, prior sale or lease, or withdrawal without notice. Copyright © 2025 Friedman Real Estate. All rights reserved.





127

127

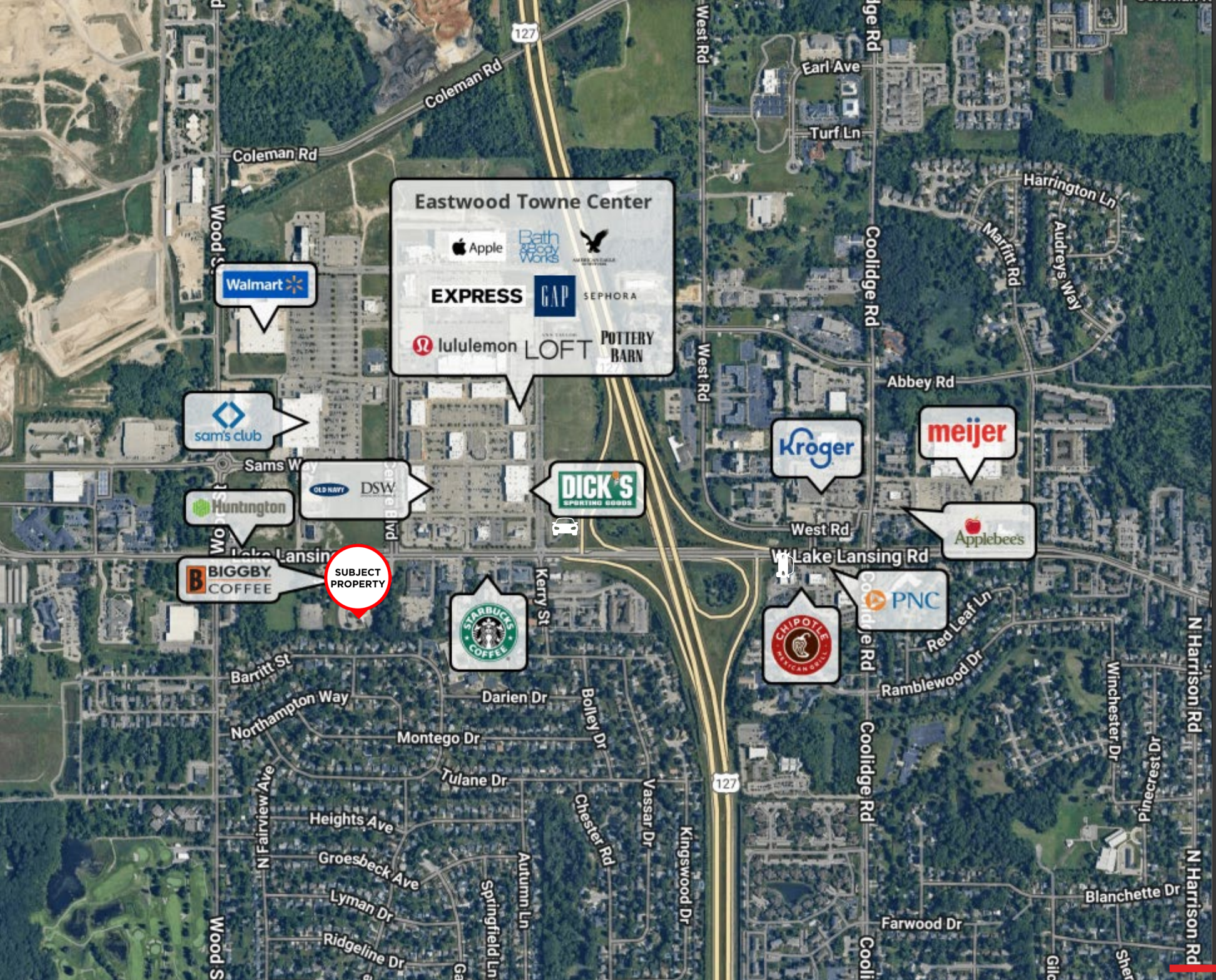
TOWNE CENTER BLVD

LAKE LANSING RD

SUBJECT PROPERTY

PROPERTY LOCATION

# NEARBY AMENITIES





## LANSING, MI

Lansing, Michigan, the state capital, serves as the economic and governmental hub of the mid-Michigan region. Historically rooted in manufacturing—especially automotive—its economy has diversified significantly in recent years. Today, key employment sectors include health care and social assistance, education services, and retail trade. The region is experiencing strong growth: between June 2024 and June 2025, the Lansing metropolitan area added approximately 5,400 jobs, making it the second fastest-growing job market in Michigan, driven by manufacturing, government, and health care gains.

Lansing, Michigan, the state’s capital, has a diverse and vibrant cultural scene that reflects its rich history and growing creativity. The city celebrates its industrial and political heritage while embracing art, music, and multicultural traditions. Downtown Lansing and the nearby Old Town district host numerous festivals, art galleries, and live music events, such as the Lansing JazzFest and ArtFeast. The Michigan State Capitol, Impression 5 Science Center, and Michigan History Center highlight the area’s civic and educational pride. With Michigan State University located in neighboring East Lansing, the community benefits from a steady influx of students, global perspectives, and cultural exchange. Together, these influences make Lansing a lively hub for arts, education, and community engagement in mid-Michigan.

### LANSING, MI

EST POPULATION (2024)	± 114,335
HOUSEHOLDS (2024)	± 53,145

CREATING  
**VALUE**  
BEYOND  
**REAL**  
**ESTATE**



MARC HAMES | SENIOR ASSOCIATE | BROKERAGE SERVICES

FRIEDMAN REAL ESTATE | 34975 W. 12 MILE ROAD | FARMINGTON HILLS, MI 48331 | FRIEDMANREALESTATE.COM

