

14551 E. NINE MILE ROAD  
EASTPOINTE, MICHIGAN

INDUSTRIAL FOR LEASE  
13,138 Square Feet Available



**SIGNATURE  
ASSOCIATES**  
KNOW SIGNATURE | KNOW RESULTS

**EXCELLENT MANUFACTURING BUILDING**



## PROPERTY FEATURES

- 13,138 square feet available
- 2,000 square feet office
- 20' clear height
- (3) 10' x 14', 10' x 12' grade level doors
- (9) cranes: (2) 15-ton, (1) 5-ton, (1) 3-ton, (1) 2-ton, (4) JIB
- 25HP compressor with air lines throughout
- New Owner: Currently undergoing substantial improvements
- Lease Rate: \$7.00/sq. ft. Gross



For more information, please contact:

**JOE STACK**  
(248) 359 0615  
jstack@signatureassociates.com

**CHRIS MONSOUR**  
(248) 948 0107  
cmonsour@signatureassociates.com

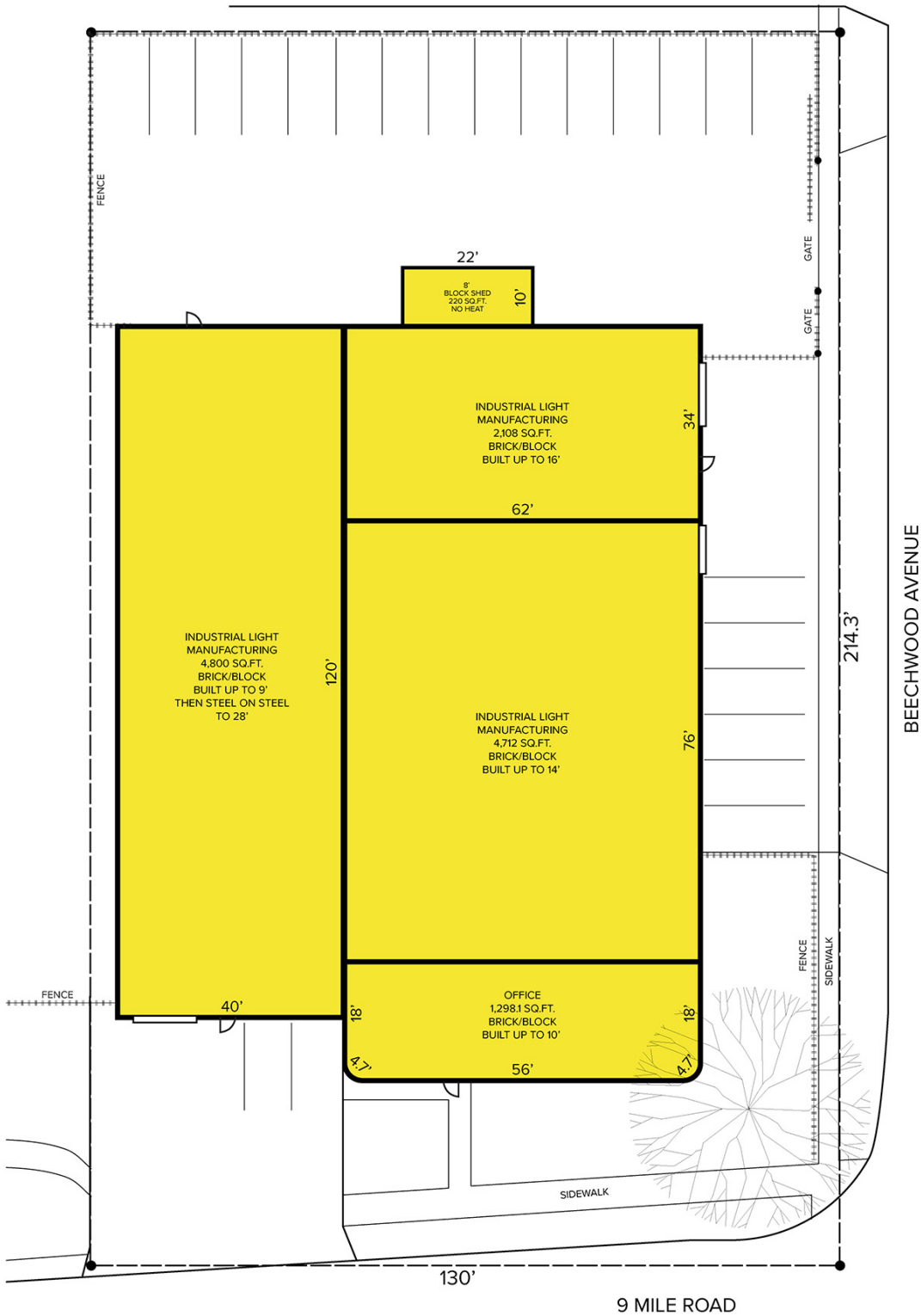
**SIGNATURE ASSOCIATES**  
One Towne Square, Suite 1200  
Southfield, MI 48076  
www.signatureassociates.com

# 14551 E. Nine Mile Road – Eastpointe, Michigan

## Industrial For Lease

13,138  
Square Feet  
AVAILABLE

### Site Plan



For more information, please contact:

**JOE STACK**  
(248) 359 0615  
jstack@signatureassociates.com

**CHRIS MONSOUR**  
(248) 948 0107  
cmonsour@signatureassociates.com

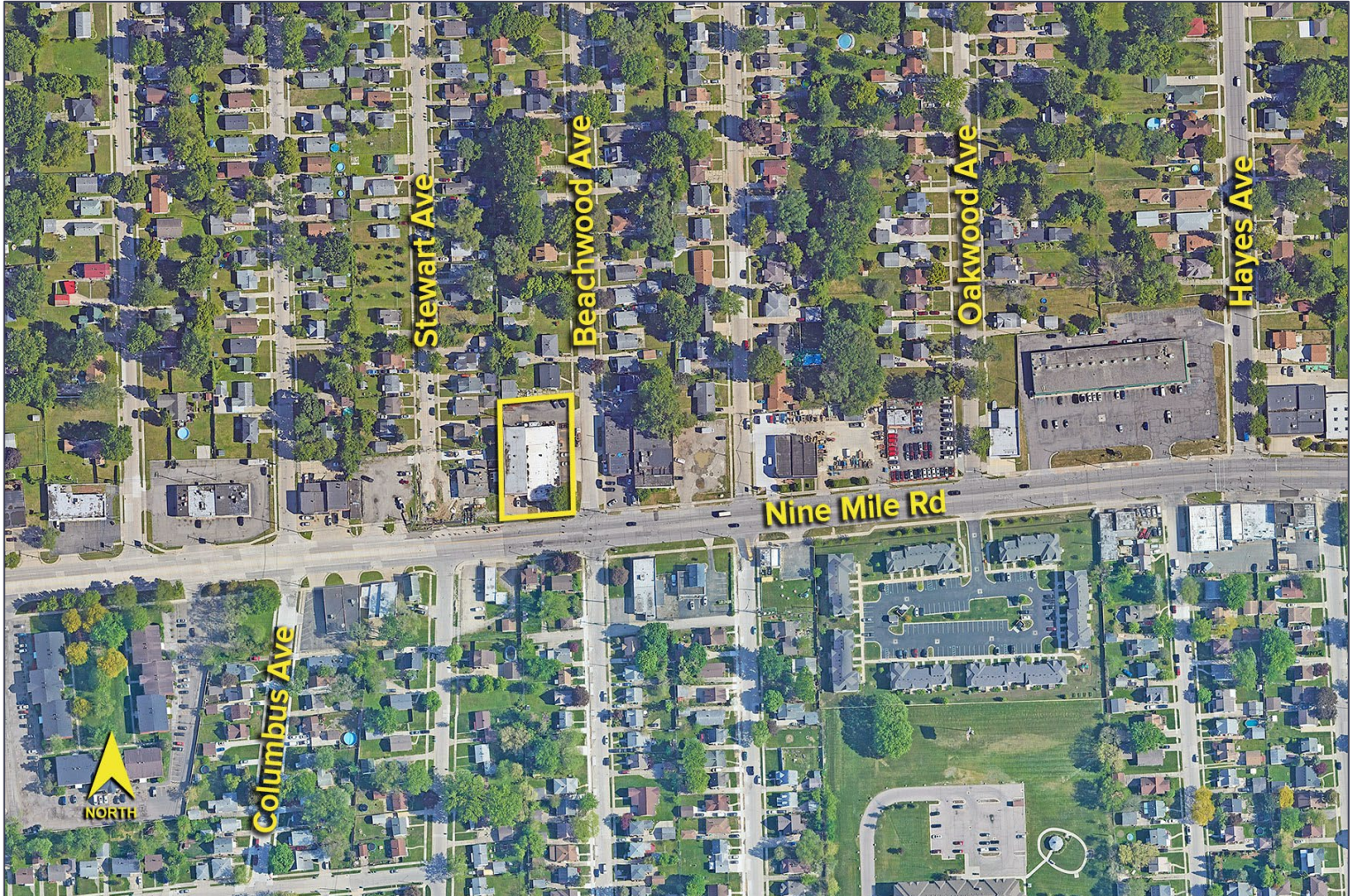
**SIGNATURE ASSOCIATES**  
One Towne Square, Suite 1200  
Southfield, MI 48076  
www.signatureassociates.com

# 14551 E. Nine Mile Road – Eastpointe, Michigan

Industrial For Lease

13,138  
Square Feet  
AVAILABLE

Aerial



For more information, please contact:

**JOE STACK**  
(248) 359 0615  
jstack@signatureassociates.com

**CHRIS MONSOUR**  
(248) 948 0107  
cmonsour@signatureassociates.com

**SIGNATURE ASSOCIATES**  
One Towne Square, Suite 1200  
Southfield, MI 48076  
www.signatureassociates.com