



SALE / LEASE

1290 Dons Lane

1290 DONS LN

Conway, AR 72032

PRESENTED BY:

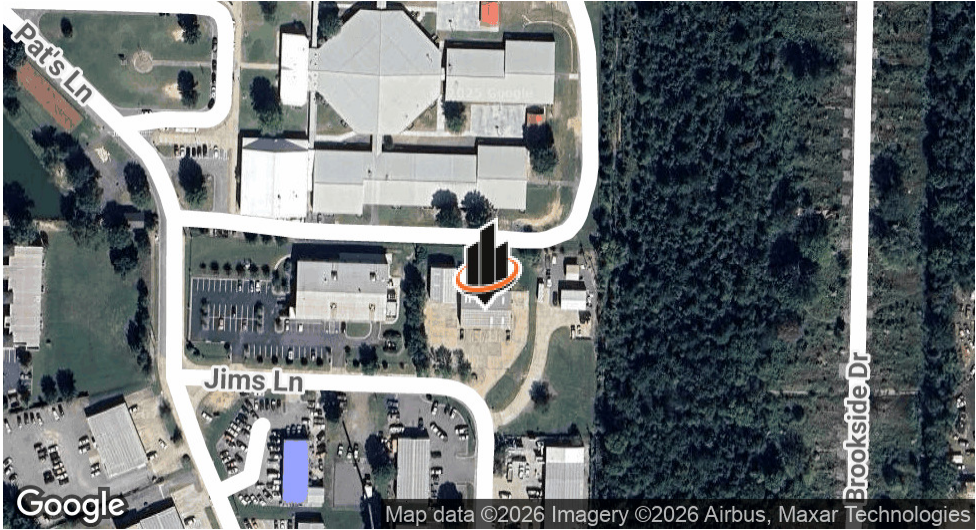
NATHAN HUTCHINS

O: 501.912.3660

nathan.hutchins@svn.com

AR #PB00063530

PROPERTY SUMMARY



OFFERING SUMMARY

SALE PRICE:	\$874,900
LEASE RATE:	\$5,866.00 per month (NNN)
LOT SIZE:	0.85 Acres
BUILDING SIZE:	7,040 SF

PROPERTY DESCRIPTION

Versatile commercial space featuring a 4,800 SF office/warehouse with functional workspace and storage, plus an additional 2,240 SF storage warehouse. Conveniently located near Highway 64, this property offers excellent accessibility, ample parking, and flexibility for various business needs.

PROPERTY HIGHLIGHTS

- Prime location in Conway, AR
- High visibility and accessibility
- Ample parking for tenants and customers
- Flexible lease terms available
- Close to major transportation routes
- Well-maintained landscaping and exterior appearance

NATHAN HUTCHINS
O: 501.912.3660
nathan.hutchins@svn.com
AR #PB00063530

ADDITIONAL PHOTOS



NATHAN HUTCHINS
O: 501.912.3660
nathan.hutchins@svn.com
AR #PB00063530

1290 DONS LN | Conway, AR 72032

SVN | ARKBEST REALTY, LLC 3

ADDITIONAL PHOTOS



NATHAN HUTCHINS
O: 501.912.3660
nathan.hutchins@svn.com
AR #PB00063530

1290 DONS LN | Conway, AR 72032

SVN | ARKBEST REALTY, LLC 4

LOCATION MAP



NATHAN HUTCHINS
O: 501.912.3660
nathan.hutchins@svn.com
AR #PB00063530