

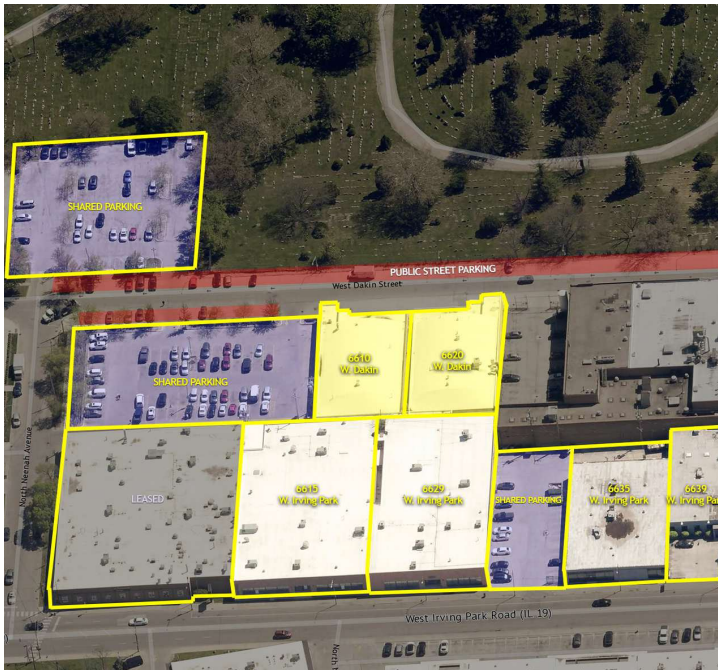
# 21,430 SF

## Industrial/Commercial Property For Lease



**BROWN**  
COMMERCIAL GROUP, INC.

**6610-6620 W. DAKIN ST., CHICAGO, IL 60634**



### 6610-6620 W. DAKIN ST., CHICAGO

- 21,430 SF
- 20% Office Space
- 12' Clear Height
- 1 Drive-in Door
- 2 Docks
- 400 Amp, 480 Volt, 3 Phase
- Kitchenette
- 3 Showers
- 50% Air Conditioned
- Taxes: \$3.24 SF
- CAM: \$1.65 SF
- Lease Rate: Subject to Offer
- Available Immediately

**COLLIN TYRRELL**

847.758.9200 x303

CTYRRELL@BROWNCOMMERCIAL.COM

**PAT CROWLEY**

847.758.9200 x310

PCROWLEY@BROWNCOMMERCIAL.COM

**DAN BROWN, SIOR**

847.758.9200 x302

DBROWN@BROWNCOMMERCIAL.COM

BROWNCOMMERCIAL.COM

// 1400 E. HIGGINS RD. SUITE A, ELK GROVE VILLAGE, IL 60007

// 847.758.9200

No warranties or representations is made as to the accuracy of the foregoing information. Terms and availability are subject to changes or withdrawal without notice

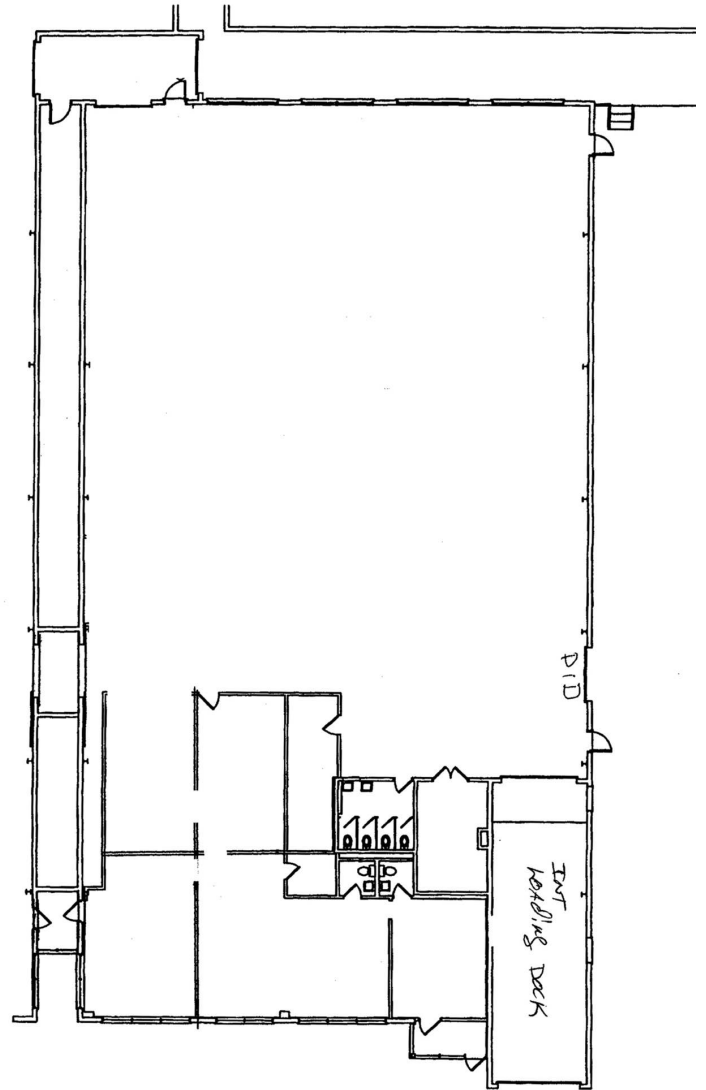
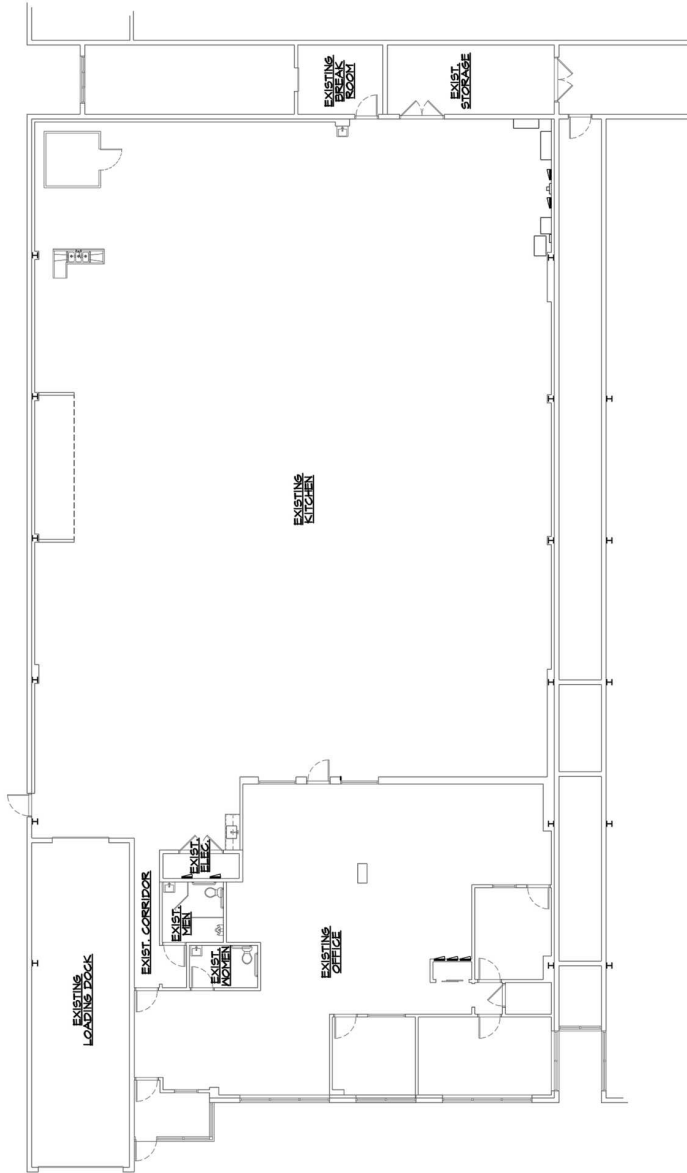
# 21,430 SF SF

## Industrial/Commercial Property For Lease



**BROWN**  
COMMERCIAL GROUP, INC.

6610-6620 W. DAKIN ST., CHICAGO, IL 60634



6620 W. DAKIN ST.

6610 W. DAKIN ST.

**COLLIN TYRRELL**

847.758.9200 x303

CTYRRELL@BROWNCOMMERCIAL.COM

**PAT CROWLEY**

847.758.9200 x310

PCROWLEY@BROWNCOMMERCIAL.COM

**DAN BROWN, SIOR**

847.758.9200 x302

DBROWN@BROWNCOMMERCIAL.COM

BROWNCOMMERCIAL.COM

// 1400 E. HIGGINS RD. SUITE A, ELK GROVE VILLAGE, IL 60007

// 847.758.9200

No warranties or representations is made as to the accuracy of the foregoing information. Terms and availability are subject to changes or withdrawal without notice