

PREMIER WAREHOUSE SPACE FOR LEASE

WAREHOUSE
AND REAR
STORAGE
AVAILABLE



553 FOUNDRY ROAD NORRISTOWN, PA

Todd Monahan

Managing Director & EVP

610.213.1647

todd.monahan@wolfcre.com

Joe Fox

Senior Advisor

484.772.5889

joseph.fox@wolfcre.com



The foregoing information was furnished to us by sources which we deem to be reliable, but no warranty or representation is made as to the accuracy thereof.
Subject to correction of errors, omissions, change of price, prior sale or withdrawal from market without notice.



Wolf Commercial Real Estate
www.WolfCRE.com



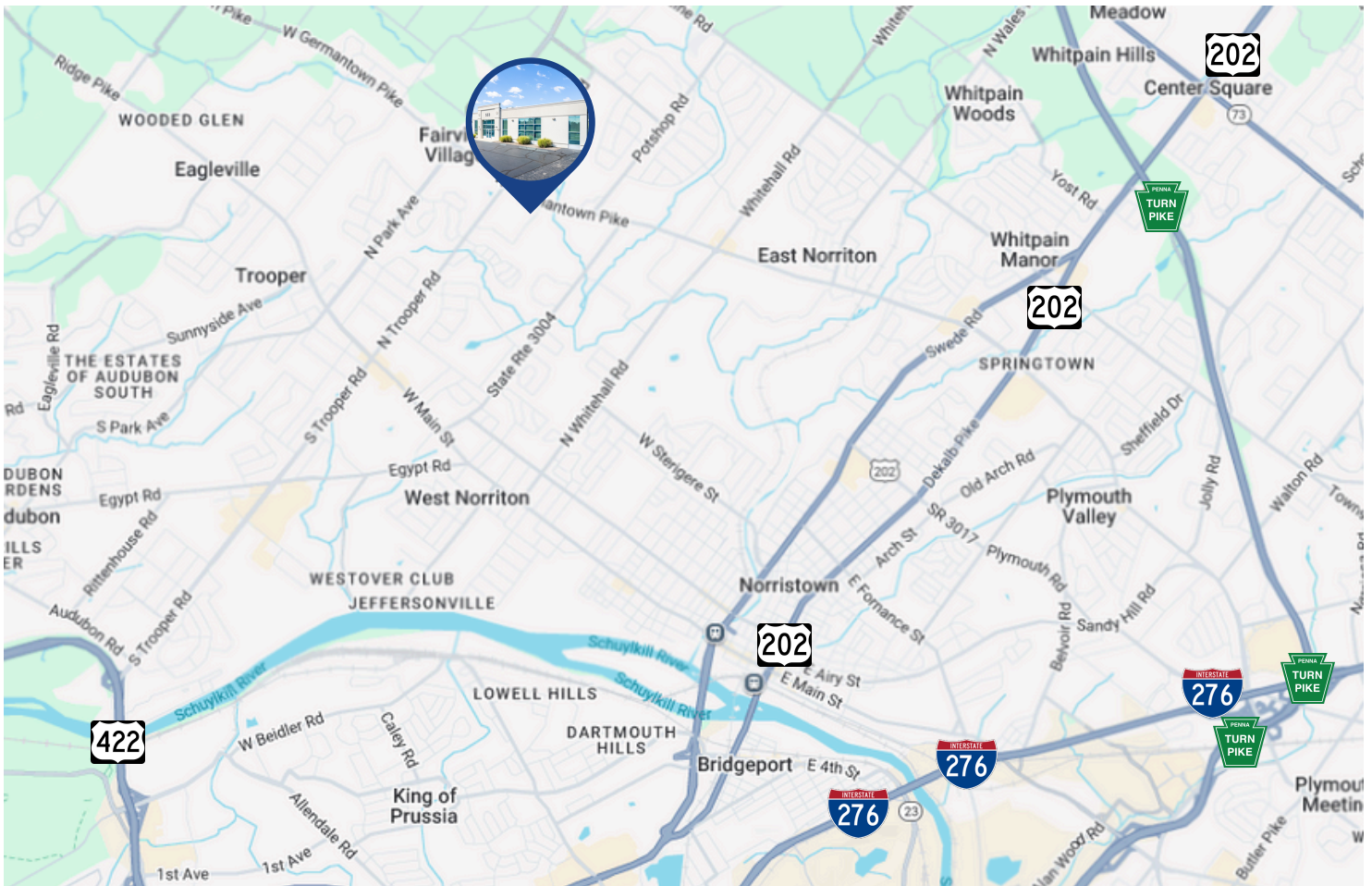
PROPERTY DESCRIPTION

Location:	553 Foundry Road Norristown, PA 19403
Size/SF Available:	+/- 1,464 SF Warehouse
Lease Price:	Call for information
Zoning:	Industrial (I)

PROPERTY AREA/HIGHLIGHTS

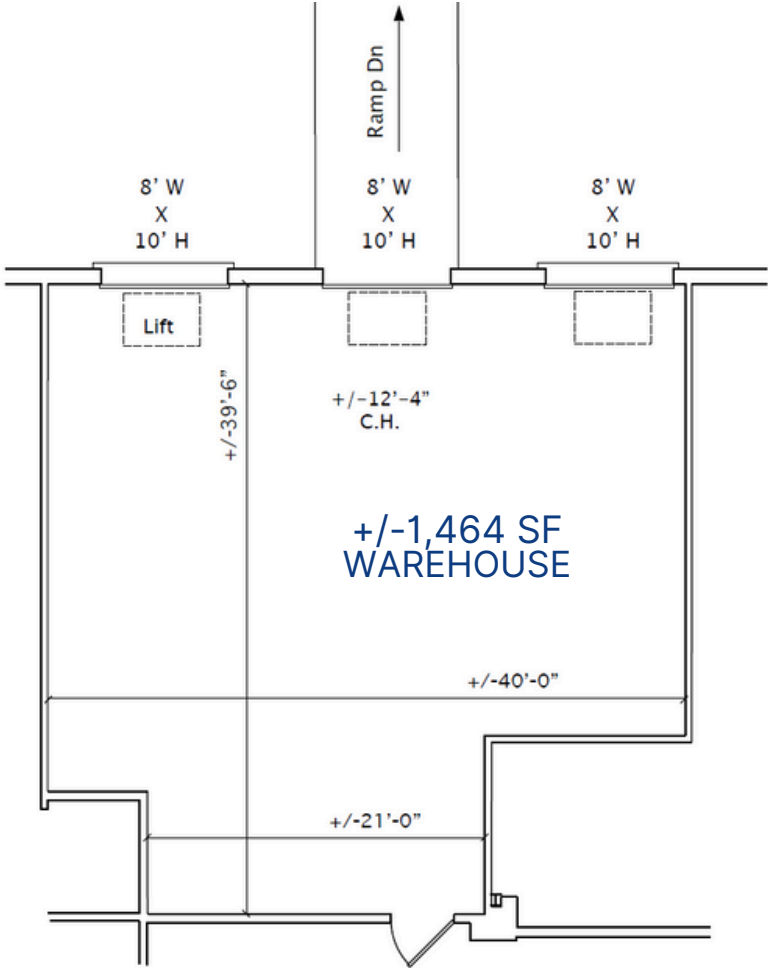
- Ideal for industrial, construction or flex users
- Rear storage available
- Three (3) 8' x 10' drive-ins
- Situated on +/- 2 acres
- Ample Parking
- Located in premier industrial park
- Close proximity to Routes 202, 422 and Interstate 276 and PA Turnpike

AERIAL MAP



The foregoing information was furnished to us by sources which we deem to be reliable, but no warranty or representation is made as to the accuracy thereof. Subject to correction of errors, omissions, change of price, prior sale or withdrawal from market without notice.

FLOOR PLAN



STORAGE AREA



The foregoing information was furnished to us by sources which we deem to be reliable, but no warranty or representation is made as to the accuracy thereof. Subject to correction of errors, omissions, change of price, prior sale or withdrawal from market without notice.