

5030  
WEST PICO  
BOULEVARD







**5030**  
WEST PICO  
BOULEVARD

## PROPERTY OVERVIEW

### ADDRESS

5030 W. Pico Boulevard  
Los Angeles, CA 90019

### USE

Retail/Office/Creative Compound/Gallery

### SIZE

Level 1	±5,776 SF
Level 2	±2,598 SF
Level 3	±1,604 SF
<b>Total</b>	<b>±9,978 SF</b>

### RENT

Available upon Request

### PARKING

Up to six parking spaces

### HIGHLIGHTS

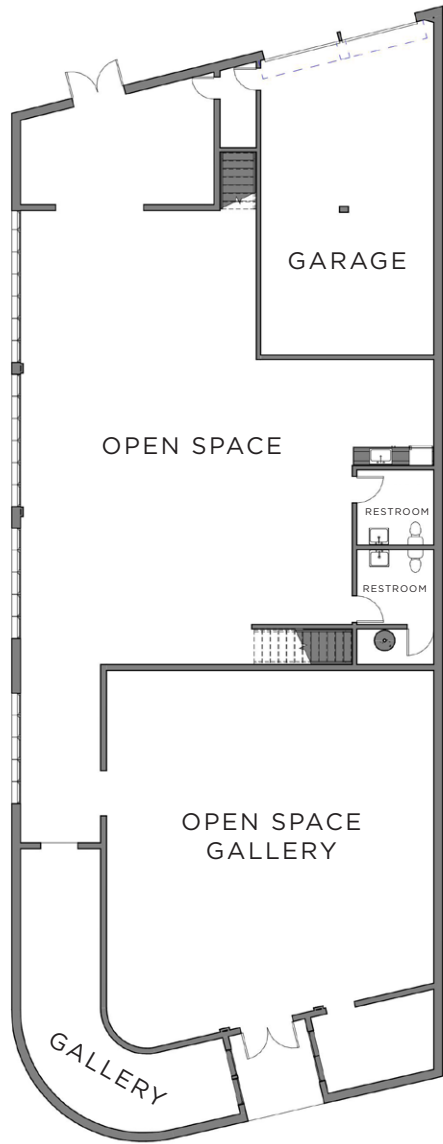
- Adjacent to world renowned Perriton gallery
- Notable nearby galleries include: Pace Gallery, David Kordansky Gallery, Mater Studio, Band of Vices, and TORUS
- Renovated building with new systems, roofs, custom lighting, skylights, polished concrete and cork floors, custom built-ins, and bathrooms
- Includes offices, garage, bathrooms, and kitchenette
- Loft-like metal-encased windows with electric shades

5030  
WEST PICO  
BOULEVARD

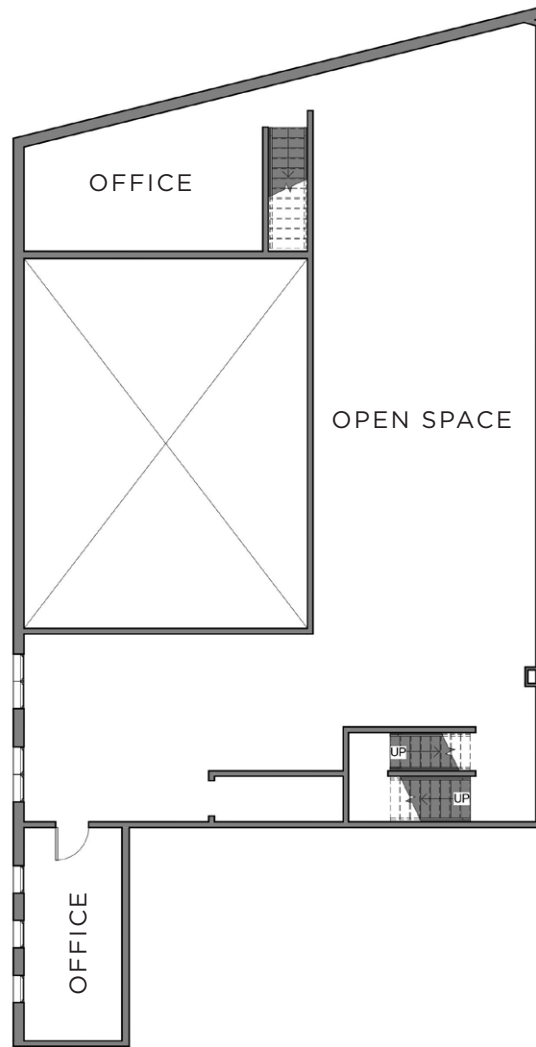




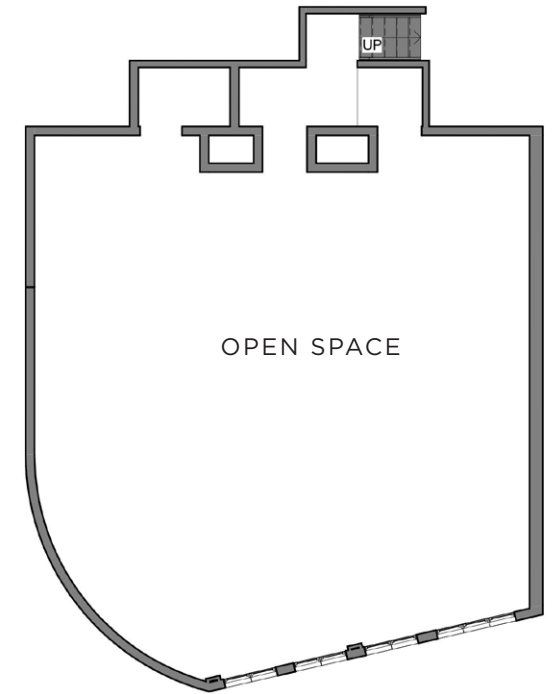
**5030**  
WEST PICO  
BOULEVARD



**LEVEL 1**  
±5,776 SF



**LEVEL 2**  
±2,598 SF



\*NOT ALL STRUCTURAL ELEMENTS DEPICTED

**LEVEL 3**  
±1,604 SF

**TOTAL ±9,978 SF**

### 5050 W. Pico Blvd

Adjacent to a large six-story mixed-use building featuring 79 units, approximately 2,100 SF of ground-floor retail space

CENTURY CITY

5030  
WEST PICO  
BOULEVARD

Multiple developments proposed/  
under construction in the nearby area

**Within one mile from 5030 W. Pico Blvd**

- 1401 S Curson Ave - 5 Multifamily units
- 4506 Dockweiler St - 20 Multifamily units
- 930 S Mansfield Ave - 19 Multifamily units
- 1110 S Spaulding Ave - 26 Multifamily units
- 4600 W Washington Blvd - 56 Multifamily units
- 4601 W Washington Blvd - 33 Multifamily units
- 5358-5376 Wilshire Blvd - 419 Multifamily units
- 5891 W Olympic Blvd - 118 Multifamily units
- 1818 Clyde Ave - 10,500 SF Apartment building
- 1009 S Cochran Ave - 5 Multifamily units
- 4326-4532 St Charles Pl - 8 Multifamily units

\*Costar 2024

The information contained herein has been obtained from sources deemed reliable but has not been verified and no guarantee, warranty or representation, either express or implied, is made with respect to such information. Terms of sale or lease and availability are subject to change or withdrawal without notice.

Corporate RE Lic. #01355491

JAY LUCHS

Vice Chairman

T 310-407-6585

[jay.luchs@nrmk.com](mailto:jay.luchs@nrmk.com)

CA RE Lic. #01260345

[JAYLUCHS.COM](http://JAYLUCHS.COM)

NEWMARK