



The Gillick Building

100-112 S Prospect, 108-122 Main Street, Park Ridge, IL 60068



OFFERING SUMMARY

Available SF:	1,707 SF
Lease Rate:	\$24.56 SF/yr (MG)
Year Built:	1926
Building Size:	20,938 SF
Renovated:	2021

PROPERTY OVERVIEW

Two Story Retail/Office and Professional Building. Centrally Located retail space within Uptown Park Ridge. Walk to transportation, shops and restaurants.

PROPERTY HIGHLIGHTS

- Best location in the heart of Uptown Park Ridge - on Restaurant Row
- Significant Walk By Foot Traffic
- Adjacent to the Metra train Station
- Excellent views of the park and uptown
- Tenant Utilities separately metered.
- Two Story Retail/Office and Professional Building
- Zoning is CBD – B4 - Uptown Core

AVAILABLE SPACES

SPACE	LEASE RATE	SIZE (SF)
120 S. Main Street	\$24.56 SF/yr	1,707 SF

OWEN HAYES

O: 847.655.3362
 C: 847.826.0081
 ojh@mclennancos.com

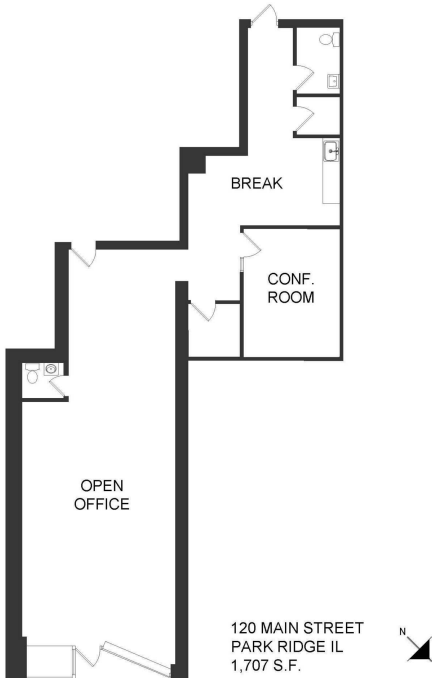
No warranty or representation is made as to the accuracy of the foregoing information. Terms of sale and lease are subject to change and withdrawal without notice.





The Gillick Building

100-112 S Prospect, 108-122 Main Street, Park Ridge, IL 60068



LEASE INFORMATION

Lease Type:	MG
Total Space:	1,707 SF

Lease Term:	36 months
Lease Rate:	\$24.56 SF/yr

AVAILABLE SPACES

SUITE	TENANT	SIZE (SF)	LEASE TYPE	LEASE RATE	DESCRIPTION
120 S. Main Street	Available	1,707 SF	Modified Gross	\$24.56 SF/yr	Street retail. Formerly a real estate office. Large front area conference room, two privacy rooms, break room and two rest rooms.

OWEN HAYES

O: 847.655.3362
C: 847.826.0081
ojh@mclennancos.com

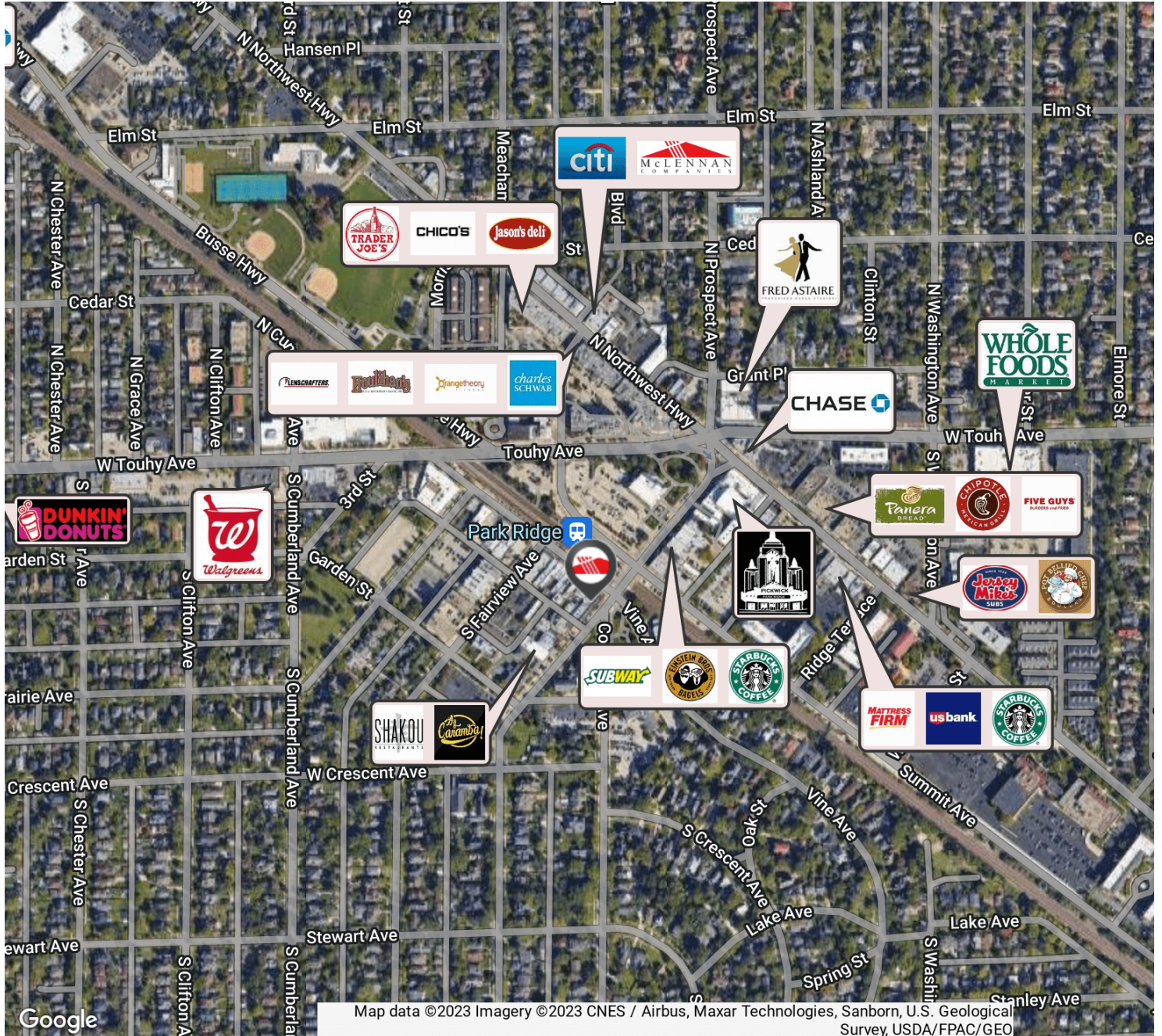
No warranty or representation is made as to the accuracy of the foregoing information. Terms of sale and lease are subject to change and withdrawal without notice.





The Gillick Building

100-112 S Prospect, 108-122 Main Street, Park Ridge, IL 60068



OWEN HAYES

O: 847.655.3362

C: 847.826.0081

ojh@mcLennancos.com

No warranty or representation is made as to the accuracy of the foregoing information. Terms of sale and lease are subject to change and withdrawal without notice.

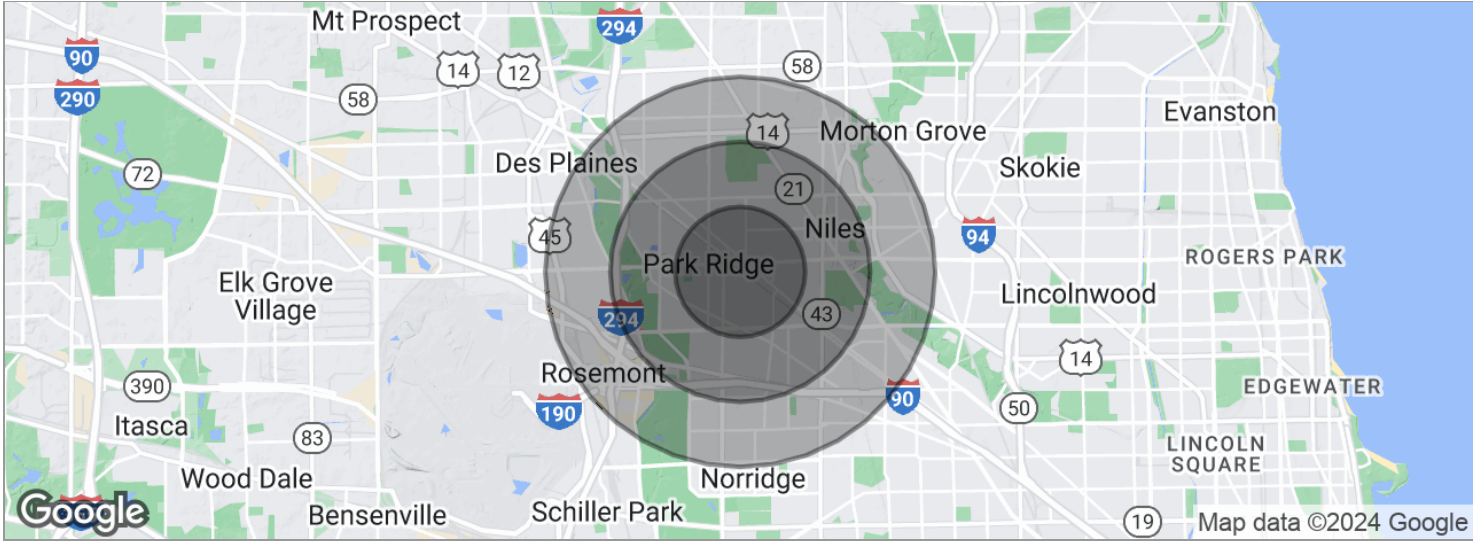
25 N. Northwest Highway | Park Ridge, IL 60016 | 847.825.0011 | www.mclennancos.com





The Gillick Building

100-112 S Prospect, 108-122 Main Street, Park Ridge, IL 60068



POPULATION	1 MILE	2 MILES	3 MILES
Total population	18,672	73,214	168,310
Median age	42.6	43.5	43.2
Median age (Male)	41.8	41.8	41.2
Median age (Female)	43.1	44.5	44.6
HOUSEHOLDS & INCOME	1 MILE	2 MILES	3 MILES
Total households	6,822	28,180	65,782
# of persons per HH	2.7	2.6	2.6
Average HH income	\$129,376	\$105,210	\$85,981
Average house value	\$540,472	\$445,485	\$379,786

* Demographic data derived from 2020 ACS - US Census

OWEN HAYES

O: 847.655.3362
 C: 847.826.0081
 ojh@mclennancos.com

No warranty or representation is made as to the accuracy of the foregoing information. Terms of sale and lease are subject to change and withdrawal without notice.

