

FOR SALE

45 SEFMLS © 2025

**ESTABLISHED AUTOMOTIVE
OPERATION WITH
PROPERTY INCLUDED**

HIALEAH, FL 33012

1750 W 41TH STREET
TURNKEY SPACE

\$1,049,000

LIST PRICE

2,920 SF

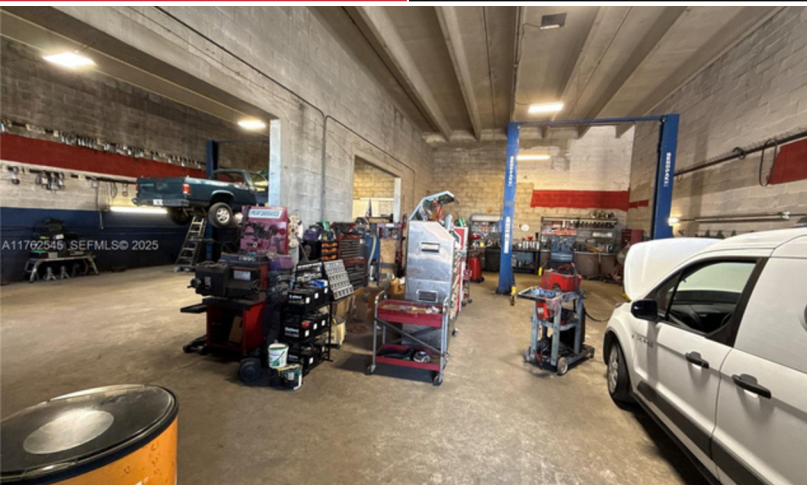
BUILDING SIZE

AUTOMOTIVE

CURRENT USE

INDUSTRIAL

ZONING



LOCATION ADVANTAGES

- High-visibility, high-traffic positioning
- Immediate access to the Palmetto Expressway
- Strong accessibility for customers and vendors
- Established presence within a proven service corridor

FAUSTO COMMERCIAL PRESENTS

Turnkey opportunity to acquire an established automotive business and real estate with 40 years of community presence. The property includes a 2,920 SF dual-bay warehouse and is offered with the operating business, loyal clientele, equipment, two lifts, and existing certifications, allowing for a seamless transition to new ownership. Recently completed 40-year recertification and full ADA compliance further strengthen this rare owner-user investment opportunity.

PROPERTY HIGHLIGHTS

- Automotive business and property sold together
- Two 1,460 SF service bays
- Equipment list available upon request
- Financials available for qualified buyers
- Ideal for owner-operator or strategic expansion
- Existing certifications included in sale

EXCLUSIVELY LISTED BY



Moises Figueroa
Commercial Real Estate Advisor
+1 786.302.3697
mf@faustocommercial.com

