

6900

WISCONSIN

Bethesda, Maryland

Office Space For Lease

READY-TO-GO SPEC SUITES

Katie Datin

Senior Vice President
+1 202 534 3614
katie.datin@colliers.com

Nathan Crowe

Senior Vice President
+1 202 534 3623
nate.crowe@colliers.com

Colliers



Highlights

- Walking Distance to Metro and Future Purple Line
- Quick Access to Friendship Heights and Washington, D.C.
- 5-Minute Walk to Bethesda Row
- Bike Score: Very Bikeable (81)

825 - 2,009 SF

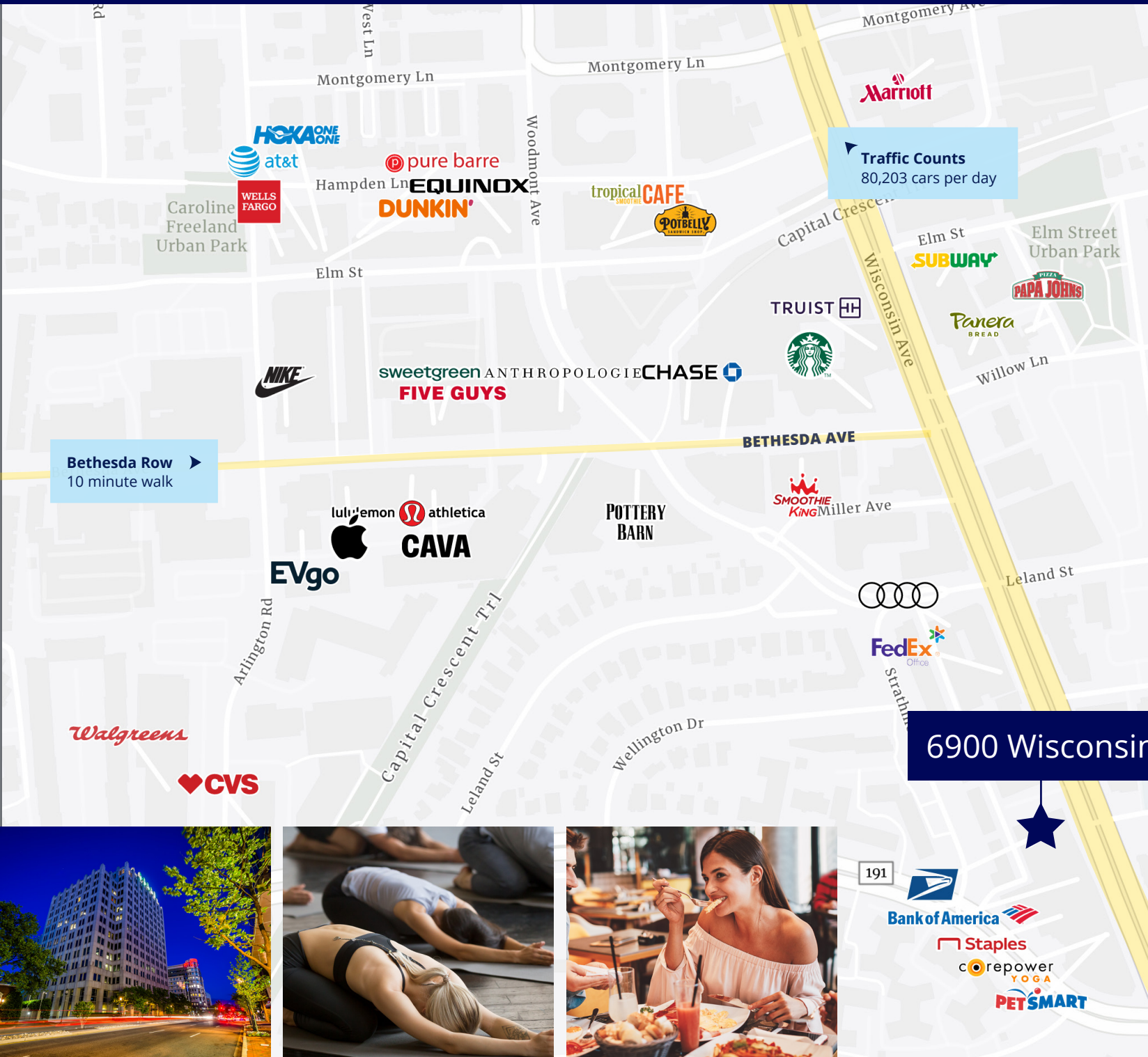
READY-TO-GO SPEC SUITES



Steps from Bethesda Row

Walk to Dozens of Nearby Restaurants

Core Power Yoga, just a 3-Minute Walk Away



Traffic Counts
80,203 cars per day

Bethesda Row
10 minute walk

6900 Wisconsin



1300 ft

6900

WISCONSIN

Bethesda, Maryland

Contact us

Katie Datin

Senior Vice President
+1 202 534 3614
katie.datin@colliers.com

Nathan Crowe

Senior Vice President
+1 202 534 3623
nate.crowe@colliers.com



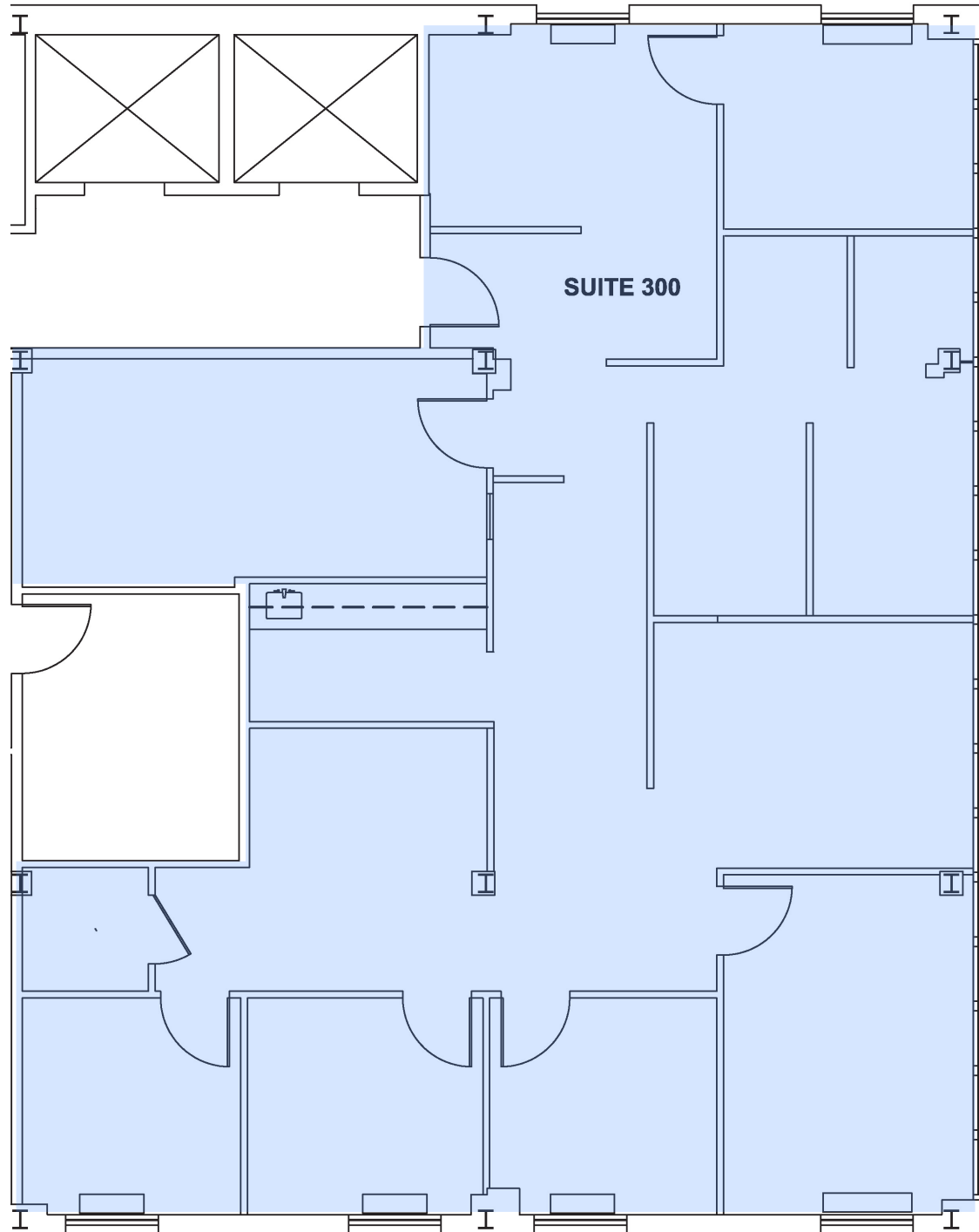
1625 Eye Street NW, Suite 950
Washington, D.C. 20006
colliers.com



This document has been prepared by Colliers International for advertising and general information only. Colliers International makes no guarantees, representations or warranties of any kind, expressed or implied, regarding the information including, but not limited to, warranties of content, accuracy and reliability. Any interested party should undertake their own inquiries as to the accuracy of the information. Colliers International excludes unequivocally all inferred or implied terms, conditions and warranties arising out of this document and excludes all liability for loss and damages arising there from. This publication is the copyrighted property of Colliers International and/or its licensor(s). ©2026. All rights reserved.

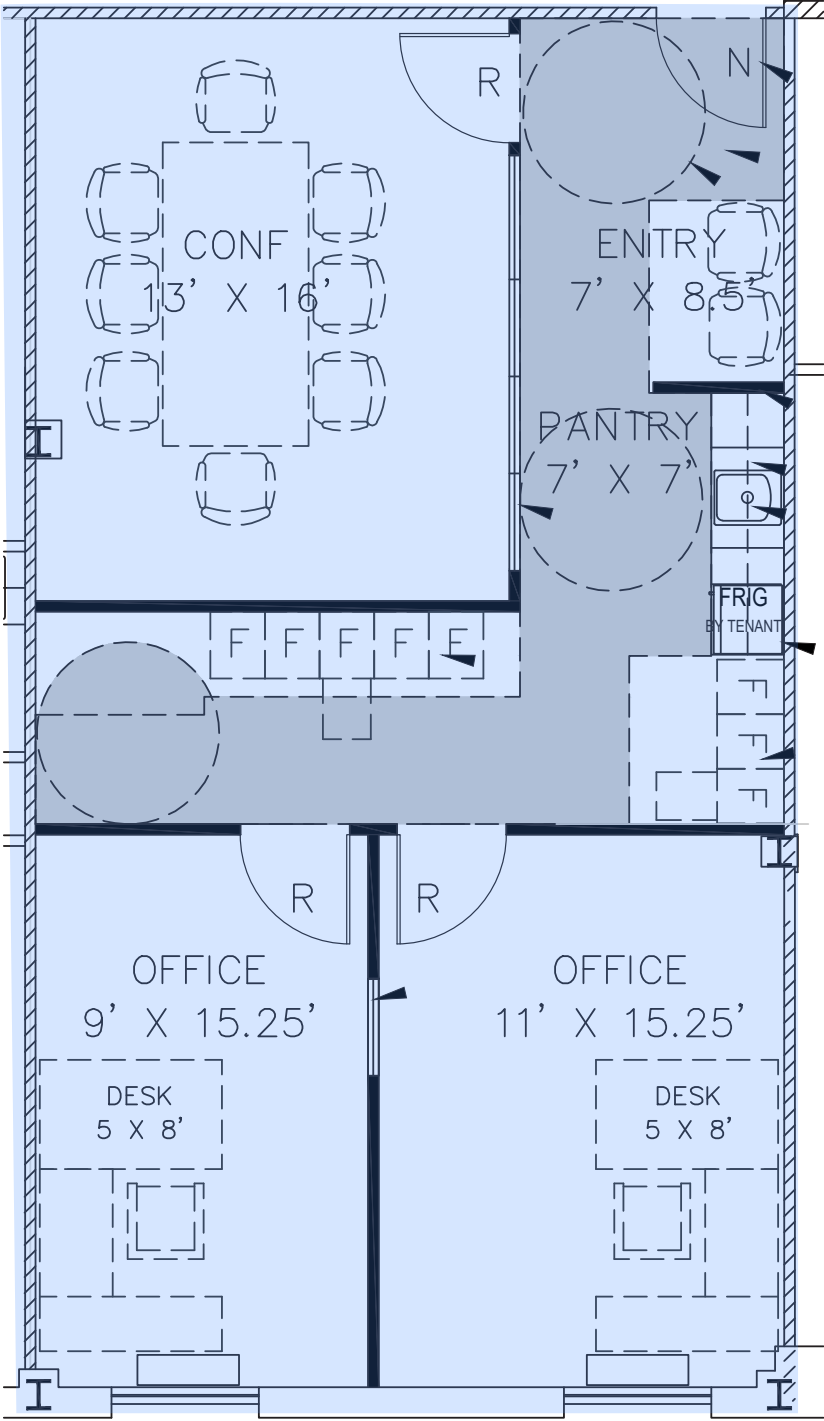
Third Floor

SUITE 300
1,939 SF



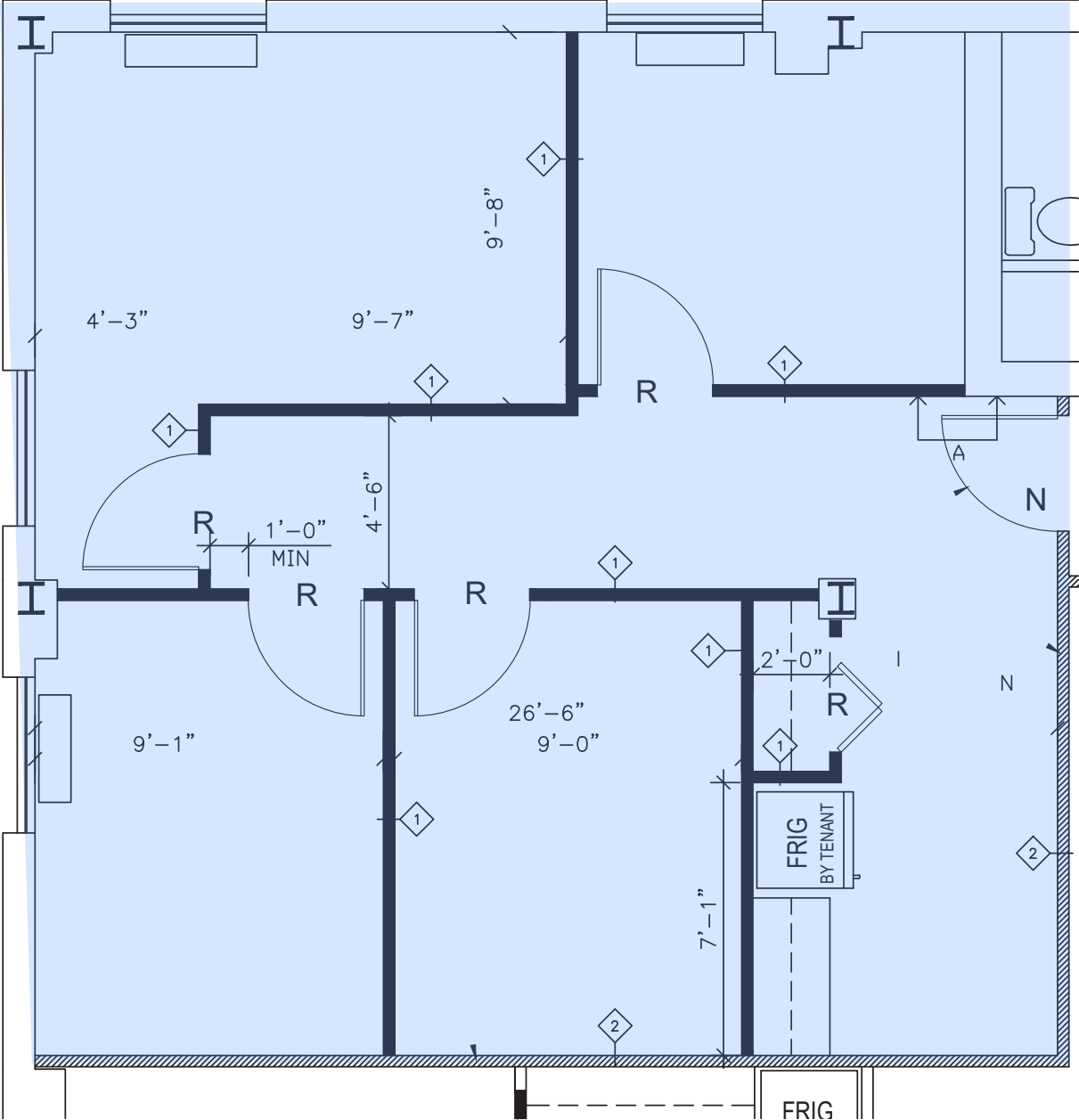
Sixth Floor

SUITE 604
925 SF



Sixth Floor

SUITE 606
839 SF



Seventh Floor

SUITE 604
2,009 SF

