

Unlock Wabash Avenue's Potential!



FOR SALE

ERIC CHAVEZ, CCIM
Broker Advisor/Builder
(213) 999-0073
eric@carebf.com
01397806, California



HIGHLIGHTS

- Capitalize on Boyle Heights’ Growth.
- Occupy or Reposition Immediately.
- High-Visibility Commercial Hub.
- Visionary Land Assemblage Potential - potential to create a 28,907 square foot, corner-to-corner project.

OFFERING SUMMARY

APN:	5229-029-017
Building Class:	C
Building SF:	3,850
Lot Size:	9,338 SF
Parking:	On-Site
Price:	\$1,108,800
\$/SF Bldg Curr:	\$288.00
\$/SF Land Curr:	\$118.74
Zoning:	C2



PROPERTY DESCRIPTION

3009 WABASH AVENUE | LOS ANGELES, CA 90063



Executive Summary

CAREBF | eXp Commercial is pleased to present. Puerta de Wabash (The Wabash Gateway), a unique commercial property located at 3009 Wabash Avenue in the heart of Boyle Heights, Los Angeles. Positioned for significant growth, the offering includes a 3,850 SF building on a substantial 9,338 SF lot, providing a blank canvas for a visionary owner-user or developer. With tenants on flexible month-to-month leases, the property offers a clear path to capitalize on the area's unstoppable momentum, driven by new development and a vibrant local economy.

The property is being offered for \$1,108,800.

Investment Highlights

Capitalize on Boyle Heights' Growth: Seize a rare redevelopment opportunity on a 9,338 SF C2-zoned, Tier 1 T.O.C. lot directly across from a new 4-story, 55-unit apartment community. The site offers clear potential for a future mixed-use or residential project of up to 25 units.

Unmatched Owner-User Flexibility: This is an ideal opportunity for a business to control its future. All retail tenants are on flexible month-to-month leases, allowing for quick occupancy. Functionality is significantly enhanced by a rare, recorded easement providing direct rear access from N Evergreen Avenue for private parking and deliveries.

Visionary Land Assemblage Potential: Unlock unmatched scale by exploring the potential for a long-term land assemblage of the entire block. This 9,338 SF parcel can serve as the key cornerstone for a master-planned development, allowing a developer to control a significant footprint in this rapidly densifying neighborhood.

CAREBF INC. | EXP COMMERCIAL REALTY
633 West 5th Street, FL26
Los Angeles, CA 90071



ERIC CHAVEZ, CCIM
Broker Advisor/Builder
O: (213) 999-0073
C: (213) 996-8578
eric@carebf.com
01397806, California

FOR SALE

3009 WABASH AVENUE | LOS ANGELES, CA 90063



Property Summary

APN:	5229-029-017
Price:	\$1,108,800
Building SF:	3,850
Price / SF:	\$288.00
Occupancy:	100
Cross Streets:	Evergreen Ave
Lot Size:	9,338 SF
Market:	Los Angeles
Frontage:	70
Signage:	On Building
Building Class:	C
Parking:	On-Site
Parking Ratio:	4:1
Traffic Count:	8,494
Zoning:	C2
Permitted Uses:	Any use permitted in the C2; 1.5; 1 & CR
Sub-market:	Southeast Los Angeles
Tenants/Units:	4
Type:	Retail
Lot Depth SF:	110'-120'
Price Land/SF	\$118.74

Property Overview

Puerta de Wabash (The Wabash Gateway), located at 3009 Wabash Avenue, is a single-story, multi-tenant commercial building totaling approximately 3,850 square feet. Constructed in 1923, the masonry building is situated on a 9,338 square foot lot and features 70 feet of frontage along Wabash Avenue, a corridor that sees over 8,494 vehicles per day.

The property is currently occupied by three retail tenants and features one billboard lease. All retail tenants are on month-to-month leases, providing an incoming owner with maximum flexibility for repositioning, re-tenanting, or personal occupation. A significant and rare feature is a recorded easement over the neighboring property, providing valuable rear access for parking and deliveries from N Evergreen Avenue.

The site's C2-1-CUGU, Tier 1 T.O.C. zoning offers significant potential for a future redevelopment project, with the possibility of constructing up to 25 residential units. Located just minutes from Downtown L.A., Little Tokyo, and the Arts District, the property boasts a high "Very Walkable" Walk Score® of 83 and is positioned to benefit from the area's increasing density and strong community demographics.

Location Overview

Situated in the vibrant, high-density heart of Boyle Heights, this property offers unparalleled connectivity and community access. With a "Very Walkable" Walk Score® of 83, daily needs are just steps away. The location is a strategic hub, positioned only minutes from Downtown L.A., Little Tokyo, and the Arts District, providing direct access to the city's economic and cultural centers. Benefiting from significant street frontage on a corridor with traffic counts exceeding 8,400 vehicles per day, the site offers tremendous visibility and is perfectly positioned to capture the area's dynamic growth.

NEW 55 UNIT DEVELOPMENT

3009 WABASH AVENUE | LOS ANGELES, CA 90063



2838 Wabash Affordable Apartments

Exciting New Development Opportunity: 52-Unit Residential Complex Coming Soon!

Across the street from this premier commercial property, a vibrant new 55-unit residential development is under construction, bringing a fresh wave of growth and opportunity to the area. This contemporary development promises to be a key driver of increased foot traffic and elevated demand for nearby commercial spaces.

What This Means for You:

Increased Foot Traffic: The influx of residents in the new development will significantly boost local foot traffic, offering a steady stream of potential customers and clients for your commercial property. This new residential community will directly benefit businesses located nearby.

Enhanced Neighborhood Appeal: The modern design and high-quality amenities of the 55-unit development will enhance the overall appeal of the neighborhood. This positive change in the area's aesthetic and functionality will make your commercial property even more attractive to tenants and investors.

Higher Demand for Retail and Services: With new residents in the vicinity, there will be an increased demand for retail, dining, and service-oriented businesses. This new development creates an ideal environment for businesses looking to capitalize on the growing local population.

Strengthened Property Value: As the area becomes more desirable due to the new residential complex, property values are likely to rise. Investing in this commercial property now positions you to benefit from the anticipated growth and increased market demand.

The Vision:

The 55-unit residential development is set to transform the neighborhood with its contemporary architecture and premium living spaces. Its proximity to your commercial property will foster a thriving, synergistic environment, making this an exciting time to invest and capitalize on the area's evolving potential.

Don't miss out on this opportunity to be part of the dynamic growth happening right across the street. Contact us today to explore how this new development can enhance the value and success of your commercial property!

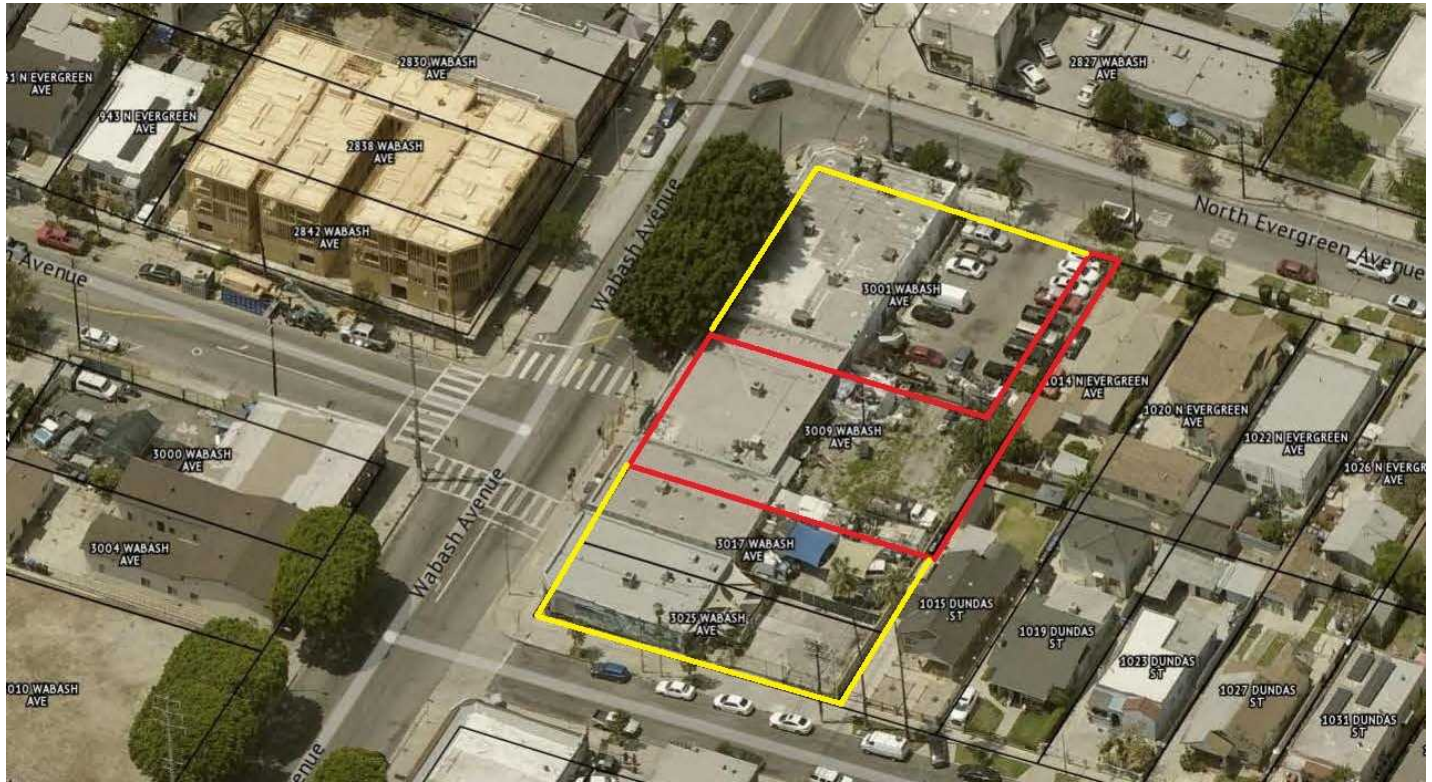
CAREBF INC. | EXP COMMERCIAL REALTY
633 West 5th Street, FL26
Los Angeles, CA 90071



ERIC CHAVEZ, CCIM
Broker Advisor/Builder
O: (213) 999-0073
C: (213) 996-8578
eric@carebf.com
01397806, California

VALUE ADD OPPORTUNITY

3009 WABASH AVENUE | LOS ANGELES, CA 90063



Unlock Significant Value with Untapped Parking Potential

"Puerta de Wabash (The Wabash Gateway)" presents a rare multi-faceted opportunity for significant value creation through strategic physical and financial repositioning. A new owner has several clear paths to substantially increase the property's net operating income and overall worth.

Untapped Parking & Yard Potential: The property includes a large, underutilized rear lot accessible via a recorded easement. Currently, this area is not optimized. By paving, landscaping, and properly striping this lot, a new owner can create a secure, dedicated parking area. This dramatically enhances the property's appeal to higher-quality tenants, improves the customer experience, and provides justification to command premium rental rates.

Significant Rental Upside: The current tenants are on flexible month-to-month leases with rents significantly below market rates. The total actual scheduled income is \$55,726, while the pro forma market income is estimated at \$112,654—an increase of over 100%. By systematically bringing leases to market levels, an investor can more than double the Gross Potential Rent and realize a substantial increase in cash flow and asset value.

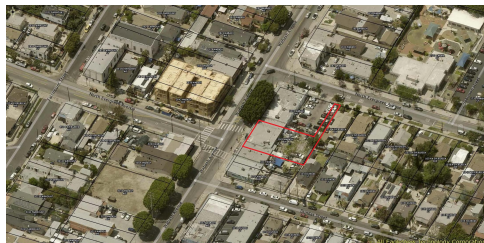
Future Redevelopment: The ultimate value-add play is the property's long-term redevelopment potential. The site consists of a 9,338 SF lot zoned C2, which allows for a wide range of commercial uses. With a Tier 1 T.O.C. designation, an investor has the potential to construct up to 25 residential units, capitalizing on the high-density rental market of Boyle Heights.

The Vision:

- Envision a modern, well-lit, and efficiently designed parking area that maximizes space and ensures safety. This transformation will not only increase the property's marketability but also deliver substantial returns on your investment.
- **Corner-to-Corner Land Assemblage:** For a visionary developer, this parcel serves as the key cornerstone for an unparalleled development. By assembling the adjacent properties, a developer has the potential to create a 28,907 square foot, corner-to-corner project spanning the entire block, allowing for a master-planned development of significant scale and impact.
- Seize this unique opportunity to enhance the property's value and appeal through strategic parking lot improvements. Contact us today to learn more about how this value-add potential can work for you!

PRO FORMA SUMMARY

3009 WABASH AVENUE | LOS ANGELES, CA 90063



Investment Summary

Price	\$1,108,800
Year Built	1923
Tenants	4
RSF	3,850
Price/RSF	\$288.00
Lot Size	9,338 sf
Floors	1
Parking Spaces	4:1
APN	5229-029-017
Cap Rate	3.02%
Market Cap Rate	7.9%

Tenant Annual Scheduled Income

Tenant	Actual	Market
Boyle Heights Super Burger	\$14,544	\$22,651
Bonfil 98 Cents Arcoirs	\$28,428	\$66,502
Raymundo John Outlet Store	\$11,904	\$22,651
Billboard	\$850	\$850
Totals	\$55,726	\$112,654

Annualized Income

Description	Actual	Market
Gross Potential Rent	\$55,726	\$112,654
- Less: Vacancy	\$0	\$0
Effective Gross Income	\$55,726	\$112,654
- Less: Expenses	(\$22,271)	(\$25,052)
Net Operating Income	\$33,455	\$87,602

Annualized Expenses

Description	Actual	Market
Property Management Fee	\$1,672	\$3,380
Building Insurance	\$3,600	\$3,600
Taxes - Real Estate	\$16,078	\$17,150
Utilities - LADWP	\$922	\$922
Total Expenses	\$22,271	\$25,052
Expenses Per RSF	\$5.78	\$6.51

CAREBF INC. | EXP COMMERCIAL REALTY
633 West 5th Street, FL26
Los Angeles, CA 90071



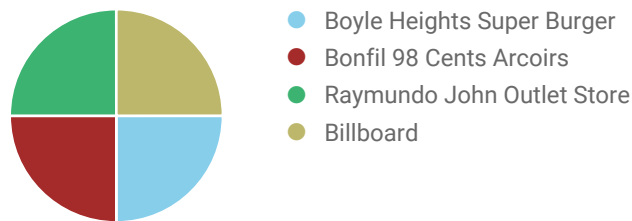
ERIC CHAVEZ, CCIM
Broker Advisor/Builder
O: (213) 999-0073
C: (213) 996-8578
eric@carebf.com
01397806, California

TENANT MIX REPORT

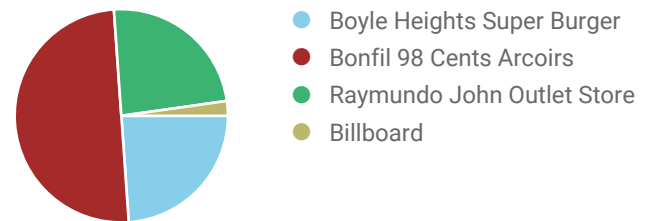
3009 WABASH AVENUE | LOS ANGELES, CA 90063

Suite	Tenants	Approx. SF	Avg. Rents	Monthly	Mkt Rents	Monthly
3015	Boyle Heights Super Burger	848	\$1,212	\$1,212	\$1,888	\$1,888
3011	Bonfil 98 Cents Arcoirs	1,749	\$2,369	\$2,369	\$5,542	\$5,542
3009	Raymundo John Outlet Store	848	\$992	\$992	\$1,888	\$1,888
Billboard	Billboard	0	\$71	\$71	\$71	\$71
4		3,445		\$4,644		\$9,388

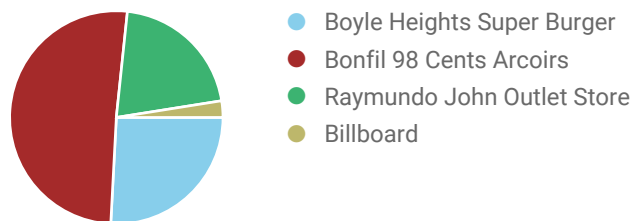
TENANT MIX



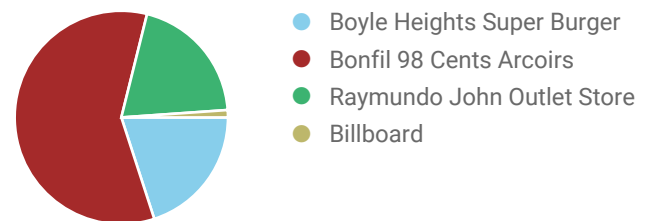
TENANT MIX SQUARE FEET



TENANT MIX INCOME



TENANT MIX MARKET INCOME



LEASE RENT ROLL

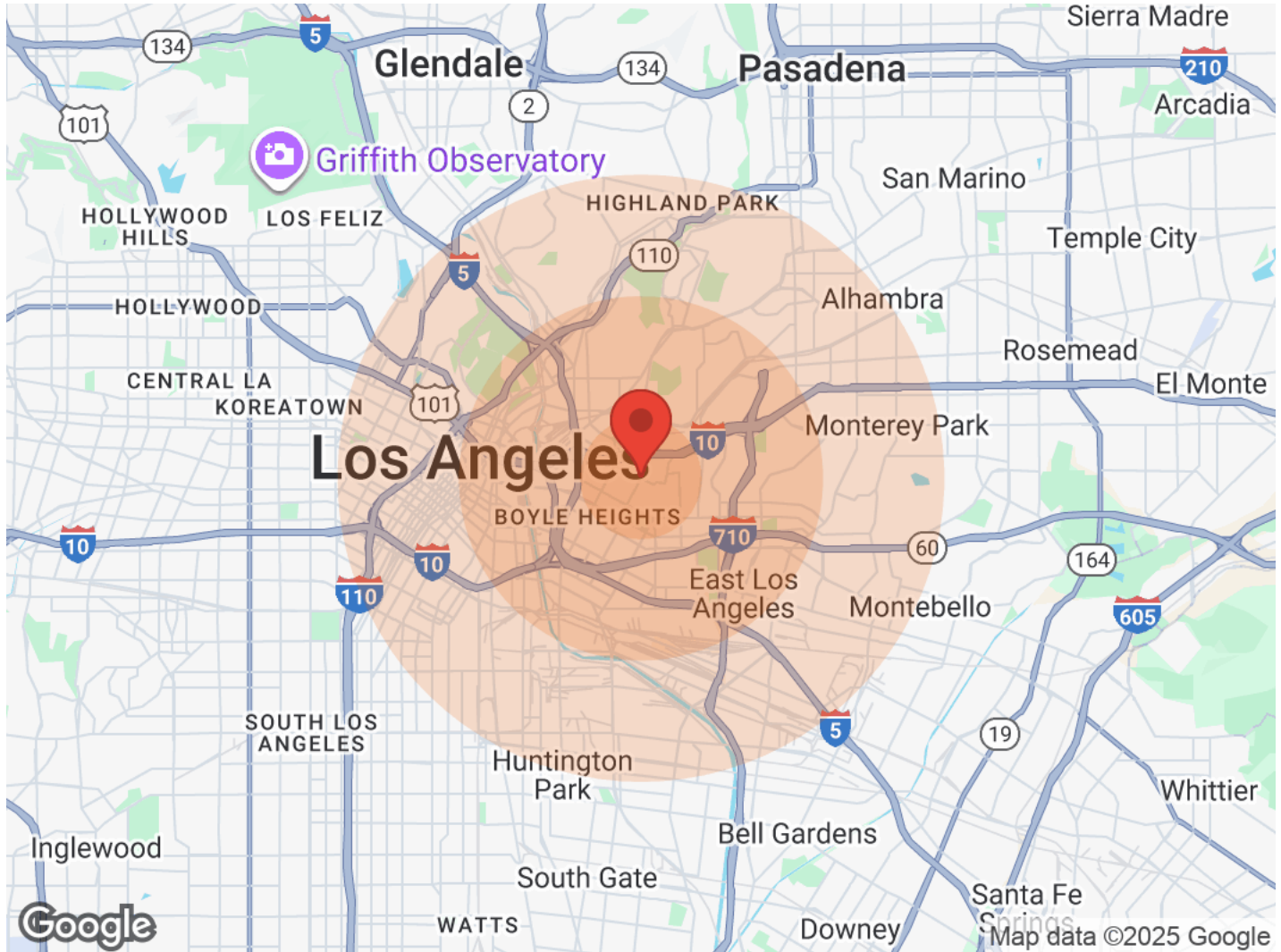
3009 WABASH AVENUE | LOS ANGELES, CA 90063



Tenant	Suite	Size	Start	Expires	\$/RSF	Rent
Boyle Heights Super Burger	3015	848	01/01/25	12/31/25	\$17.15	\$14,544
Note: "The tenant has occupied the space since 2018 and is currently on a month-to-month lease."						
Bonfil 98 Cents Arcoirs	3011	1,749	01/01/25	12/31/25	\$16.25	\$28,428
Note: "The tenant has occupied the space since 2017 and is currently on a month-to-month lease."						
Raymundo John Outlet Store	3009	848	01/01/25	12/31/25	\$14.04	\$11,904
Note: "The tenant has occupied the space since 2019 and is currently on a month-to-month lease."						
Billboard	Billboard	0	01/01/24	12/31/29	N/A	\$850
Note: "Lease was automatically renewed for the January 1, 2024 – December 31, 2029 term."						

DEMOGRAPHICS

3009 WABASH AVENUE | LOS ANGELES, CA 90063



Population	1 Mile	3 Miles	5 Miles	Income	1 Mile	3 Miles	5 Miles
Male	32,801	169,900	482,393	Median	\$33,901	\$35,707	\$39,305
Female	30,242	160,029	456,664	< \$15,000	2,898	19,165	55,750
Total Population	63,043	329,929	939,057	\$15,000-\$24,999	2,861	14,034	43,166
				\$25,000-\$34,999	2,246	11,511	35,045
Age	1 Mile	3 Miles	5 Miles	\$35,000-\$49,999	2,331	13,519	41,328
Ages 0-14	15,580	69,955	190,593	\$50,000-\$74,999	2,970	13,408	44,467
Ages 15-24	10,146	45,588	123,991	\$75,000-\$99,999	882	6,904	24,233
Ages 25-54	27,534	143,799	415,695	\$100,000-\$149,999	792	6,612	22,814
Ages 55-64	5,024	32,351	96,400	\$150,000-\$199,999	166	1,841	7,902
Ages 65+	4,759	38,236	112,378	> \$200,000	82	794	5,602
Race	1 Mile	3 Miles	5 Miles	Housing	1 Mile	3 Miles	5 Miles
White	27,870	135,174	363,952	Total Units	15,968	94,043	302,110
Black	577	10,840	25,947	Occupied	15,077	88,251	282,519
Am In/AK Nat	161	1,100	3,471	Owner Occupied	4,338	27,761	86,351
Hawaiian	N/A	30	94	Renter Occupied	10,739	60,490	196,168
Hispanic	60,999	272,150	708,545	Vacant	891	5,792	19,591
Multi-Racial	67,508	296,248	796,862				

CAREBF INC. | EXP COMMERCIAL REALTY
633 West 5th Street, FL26
Los Angeles, CA 90071



ERIC CHAVEZ, CCIM
Broker Advisor/Builder
O: (213) 999-0073
C: (213) 996-8578
eric@carebf.com
01397806, California

DISCLAIMER

3009 WABASH AVENUE



All materials and information received or derived from CAREBF Inc. | eXp Commercial Realty its directors, officers, agents, advisors, affiliates and/or any third party sources are provided without representation or warranty as to completeness, veracity, or accuracy, condition of the property, compliance or lack of compliance with applicable governmental requirements, developability or suitability, financial performance of the property, projected financial performance of the property for any party's intended use or any and all other matters.

Neither CAREBF Inc. | eXp Commercial Realty its directors, officers, agents, advisors, or affiliates makes any representation or warranty, express or implied, as to accuracy or completeness of the materials or information provided, derived, or received. Materials and information from any source, whether written or verbal, that may be furnished for review are not a substitute for a party's active conduct of its own due diligence to determine these and other matters of significance to such party. CAREBF Inc. | eXp Commercial Realty will not investigate or verify any such matters or conduct due diligence for a party unless otherwise agreed in writing.

EACH PARTY SHALL CONDUCT ITS OWN INDEPENDENT INVESTIGATION AND DUE DILIGENCE.

Any party contemplating or under contract or in escrow for a transaction is urged to verify all information and to conduct their own inspections and investigations including through appropriate third-party independent professionals selected by such party. All financial data should be verified by the party including by obtaining and reading applicable documents and reports and consulting appropriate independent professionals. CAREBF Inc. | eXp Commercial Realty makes no warranties and/or representations regarding the veracity, completeness, or relevance of any financial data or assumptions. CAREBF Inc. | eXp Commercial Realty does not serve as a financial advisor to any party regarding any proposed transaction.

All data and assumptions regarding financial performance, including that used for financial modeling purposes, may differ from actual data or performance. Any estimates of market rents and/or projected rents that may be provided to a party do not necessarily mean that rents can be established at or increased to that level. Parties must evaluate any applicable contractual and governmental limitations as well as market conditions, vacancy factors and other issues in order to determine rents from or for the property. Legal questions should be discussed by the party with an attorney. Tax questions should be discussed by the party with a certified public accountant or tax attorney. Title questions should be discussed by the party with a title officer or attorney. Questions regarding the condition of the property and whether the property complies with applicable governmental requirements should be discussed by the party with appropriate engineers, architects, contractors, other consultants, and governmental agencies. All properties and services are marketed by CAREBF Inc. | eXp Commercial Realty in compliance with all applicable fair housing and equal opportunity laws.

CAREBF INC. | EXP COMMERCIAL REALTY

633 West 5th Street, FL26
Los Angeles, CA 90071



PRESENTED BY:

ERIC CHAVEZ, CCIM

Broker Advisor/Builder

O: (213) 999-0073

C: (213) 996-8578

eric@carebf.com

01397806, California

The calculations and data presented are deemed to be accurate, but not guaranteed. They are intended for the purpose of illustrative projections and analysis. The information provided is not intended to replace or serve as substitute for any legal, accounting, investment, real estate, tax or other professional advice, consultation or service. The user of this software should consult with a professional in the respective legal, accounting, tax or other professional area before making any decisions.