

HARVARD SQUARE

THE GALLERIA

RETAIL / RESTAURANT SPACE
57 JFK STREET - CAMBRIDGE, MA
4,602 SF LOWER LEVEL WITH DIRECT ACCESS



Proposed Renovated Storefront Rendering



4,602 SF
Lower Level
Retail Space

- JFK / Winthrop Street Signage
- ADA Access Via Winthrop Street
- NNNs: \$21.00/ PSF
- Restaurant Venting Available
- Available Spring 2024

Co-Tenants:



Adding 3 Floors Above
Existing 2 Floors
40 New Residential Units

FLOOR PLAN

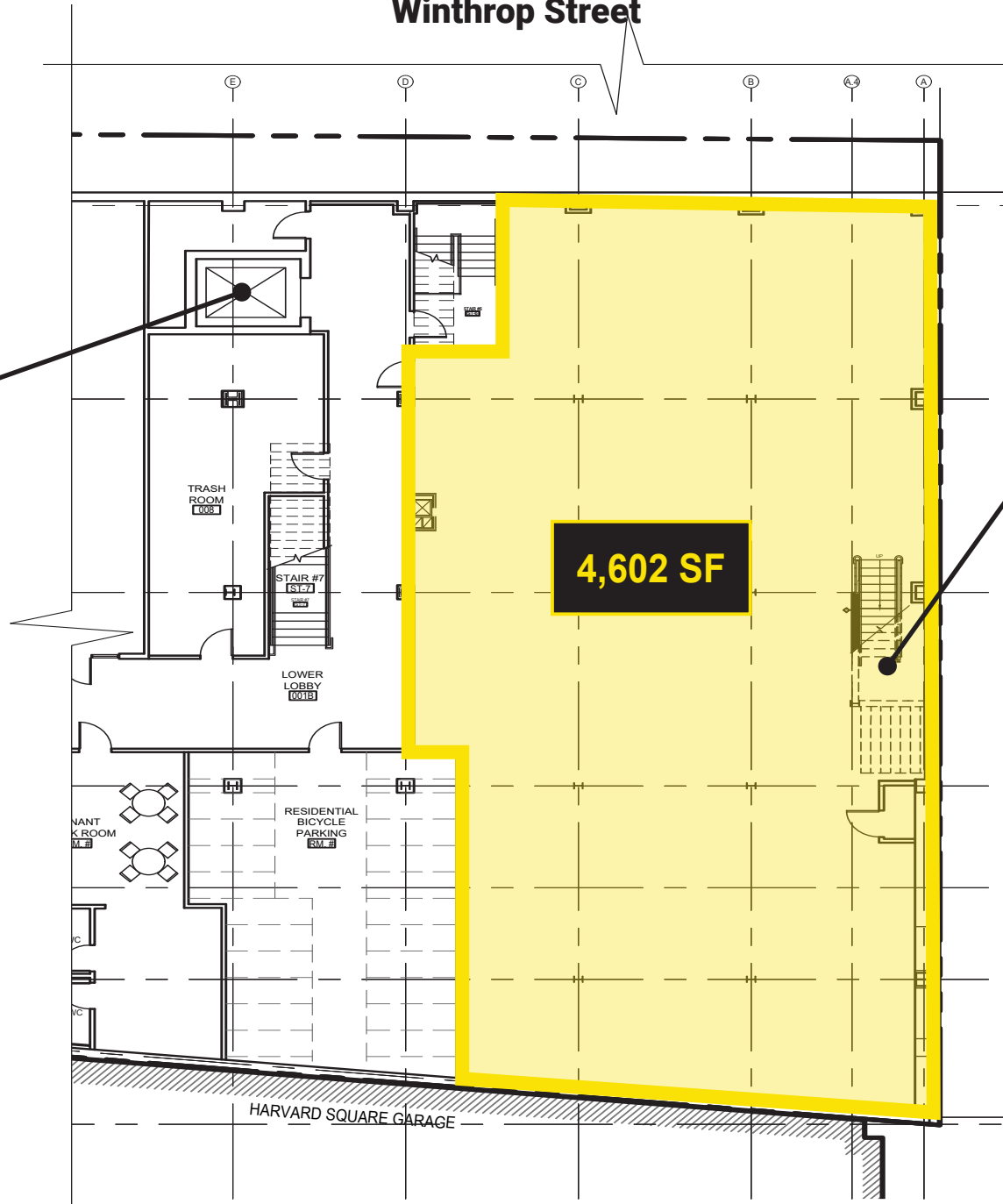
Winthrop Street

ADA Entrance

New Street Entrance

4,602 SF

JFK Street



STOREFRONT PHOTO - EXISTING CONDITIONS



H A R V A R D S Q U A R E • 5 7 J F K S T R E E T • C A M B R I D G E , M A



MAP



HARVARD SQUARE • 57 JFK STREET • CAMBRIDGE, MA



AERIAL PHOTO



AERIAL PHOTO



Find Your Place.

ADAM CONVISER

ADAM@CONVISERPG.COM

MOBILE: (617) 593-1700

JIM CONVISER

JIM@CONVISERPG.COM

MOBILE: (617) 839-0456

CAROLINE ALLEN

CAROLINE@CONVISERPG.COM

MOBILE: (617) 312-6492



CONVISER PROPERTY GROUP, INC

220 RESERVOIR STREET, SUITE 9 • NEEDHAM, MA 02494

O: (781) 320-0600 • F: (781) 791-4599 • WWW.CONVISERPG.COM

H A R V A R D S Q U A R E • 5 7 J F K S T R E E T • C A M B R I D G E , M A



Ver: 1.17.24