

# FOR SUBLEASE

±4,800 SF SHOWROOM/INDUSTRIAL SUITE

7582 & 7584 CLAIREMONT MESA BOULEVARD  
SAN DIEGO, CA 92111



BRIAN FISCHER

Lic #02106605 | 858.458.3314

bfischer@voitco.com

SULLIVAN O'BRIEN

Lic # 02219481 | 858.602.2894

sobrien@voitco.com

**Voit**

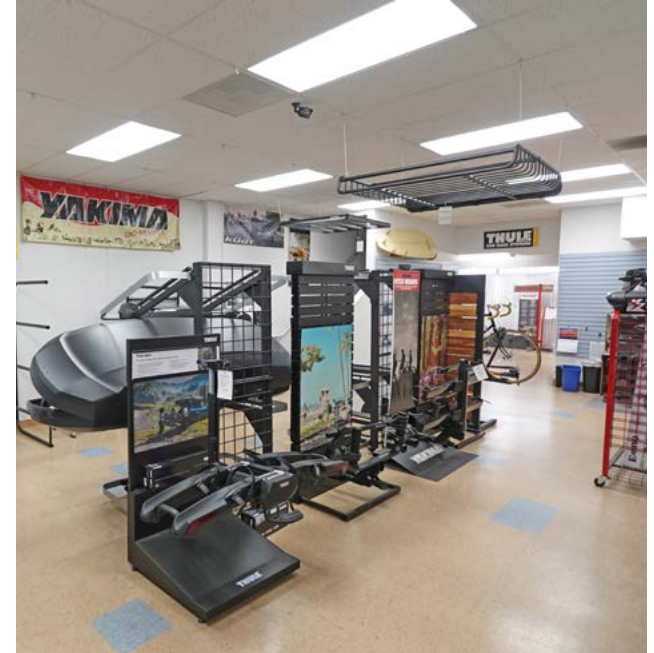
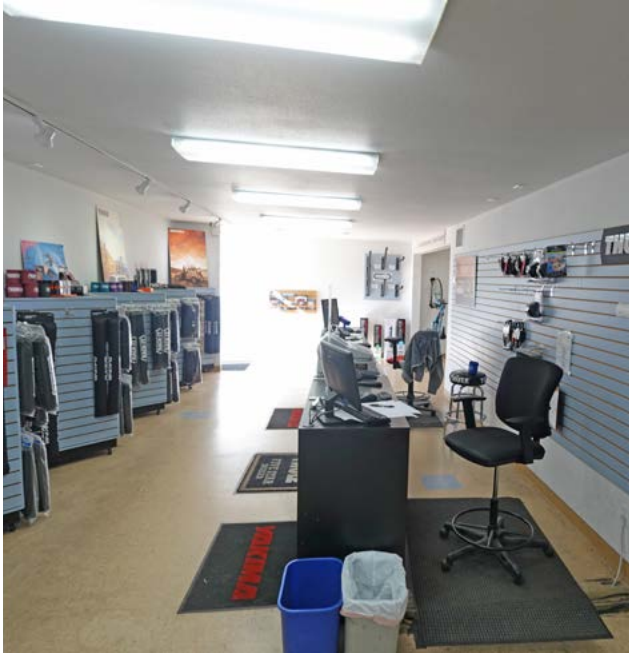
REAL ESTATE SERVICES



**±4,800 SF**  
SF Available

**\$2.18/SF IG**  
Sublease Rate

**December 31, 2026**  
Sublease Expiration



## BUILDING SPECIFICATIONS



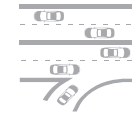
**±4,800 SF**  
Sublease Available



**M1A**  
Zoning



**On-Site**  
Property Management



**I-805, I-5, SR-163 & SR-52**  
Freeway Access



**Kearny Mesa**  
Central Location



**2.50/1,000 SF**  
Parking Ratio



**18'**  
Clear Height



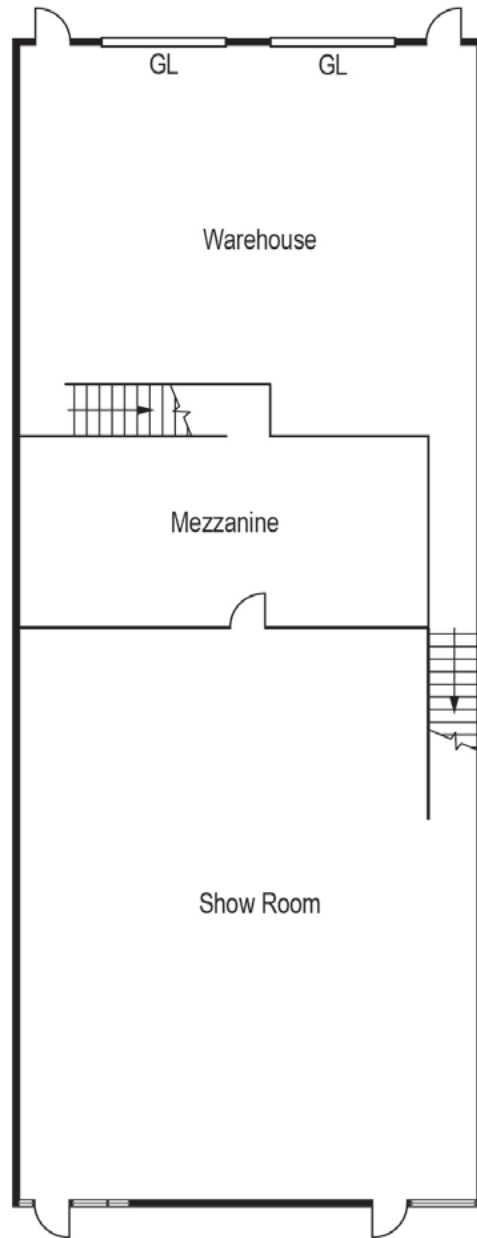
**Two**  
Drive In Doors



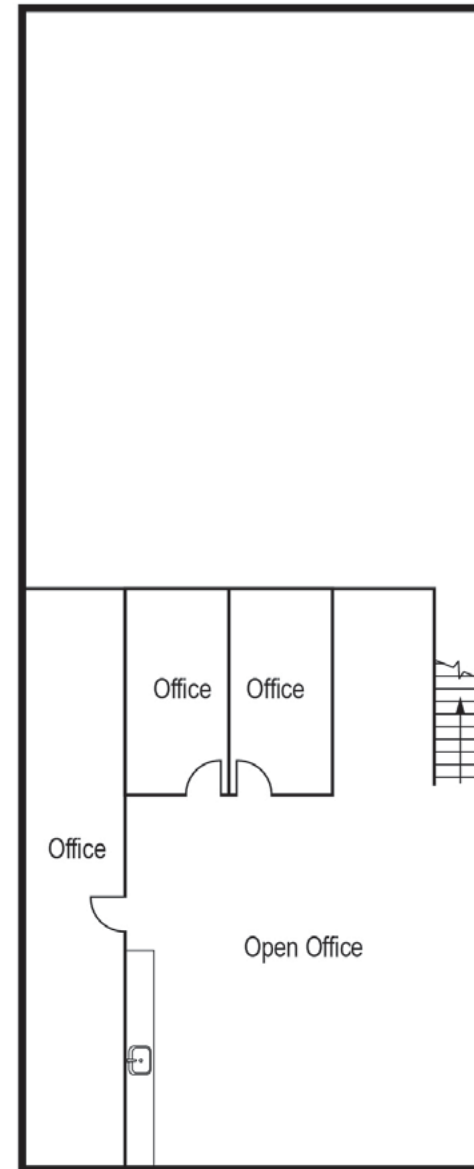
**Building**  
Signage



**Storage**  
Space

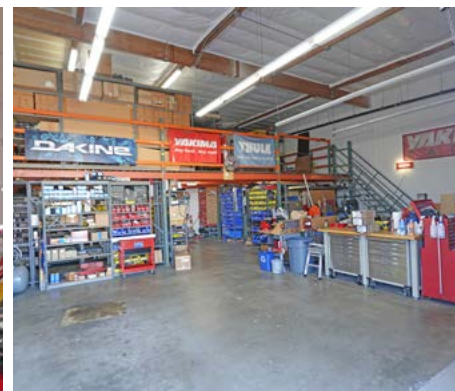


**First Floor**



**Second Floor**







**BRIAN FISCHER**

Lic #02106605 | 858.458.3314

bfischer@voitco.com

**SULLIVAN O'BRIEN**

Lic # 02219481 | 858.602.2894

sobrien@voitco.com

4180 La Jolla Village Drive, Suite 100, La Jolla, CA 92037 | 858.453.0505 858.408.3976 Fax | Lic #01991785 | [www.voitco.com](http://www.voitco.com)

Licensed as Real Estate Salespersons by the DRE. The information contained herein has been obtained from sources we deem reliable. While we have no reason to doubt its accuracy, we do not guarantee it. ©2025 Voit Real Estate Services. All Rights Reserved.

**Voit**

REAL ESTATE SERVICES