

**BMO BANK**  
**3131 SOUTH 13TH STREET**  
MILWAUKEE, WI

SINGLE-TENANT  
ABSOLUTE NET LEASE  
ANNUAL RENT INCREASES

**\$51+**  
**MILLION**  
**IN DEPOSITS**

**A+ / Aa2 CREDIT RATING**

CONFIDENTIAL OFFERING MEMORANDUM

**Andy Hess**

312.286.4040

ahess@founders3.com

**Bob Flood, SIOR**

414.530.7000

bflood@founders3.com

**Ty Mueller**

262.707.3180

tmueller@founders3.com

The material contained in this Offering Memorandum is confidential and for the purpose of the real estate described herein. It is subject to the terms and provisions of the Confidentiality Agreement signed by the recipient of this material and is not to be used for any purpose or made available to any other person without the express written consent of Founders 3 Estate Services, Inc. ("Broker").

This Offering Memorandum was prepared by Broker solely for the use of prospective purchasers of the real estate described herein. Neither Broker, the seller, nor any of their respective officers, employees or agents, make any representation or warranty, expressed or implied, as to the completeness or the accuracy of the material contained in the Offering Memorandum or any of its contents and no legal commitments or obligations shall arise by reason of the package or any of its contents. The seller reserves the right to eliminate any portion or all of the real estate for any offer for sale at any time prior to the completion of a binding contract of sale executed by both seller and a prospective purchaser.

Prospective purchasers of the real estate are advised (i) that changes may have occurred in the condition of the real estate since the time of the Offering Memorandum or the financial statements therein were prepared and that (ii) all financial projections are provided for general reference purposes only in that they are based on assumptions relating to the general economy, competition, and other factors beyond the control of Broker and the seller and therefore, are subject to material variation. Prospective purchasers of the real estate are advised and encouraged to conduct their own comprehensive review and analysis of the real estate.

The Offering Memorandum is a solicitation of interest only and is not an offer to sell the real estate. The seller and Broker expressly reserve the right, at their sole discretion, to reject any or all expressions of interest or offers to purchase the real estate and expressly reserve the right, at their sole discretion, to terminate discussions with any entity at any time with or without notice. The seller shall have no legal commitment or obligations to any entity reviewing the Offering Memorandum or making an offer to purchase the real estate unless and until a written agreement satisfactory to the seller hereunder have been satisfied or waived.

This Offering Memorandum is confidential. By accepting the Offering Memorandum, you agree (i) that you hold and treat the Offering Memorandum and its contents in the strictest confidence, (ii) that you will not photocopy or duplicate any part of the Offering Memorandum, (iii) that you will not disclose the Offering Memorandum or any of its contents to any other entity without the prior written authorization of Broker, and (iv) that you will not use the Offering Memorandum in any fashion or manner detrimental to the Interest of the seller or Broker.

The terms and conditions stated in the section will relate to all of the sections of the package as if stated independently therein. If, after reviewing this package, you have no further interest in purchasing the Property at this time, kindly return this brochure to Broker at your earliest convenience or delete the electronic brochure file in your possession.

# INVESTMENT SUMMARY

**\$51+ MILLION  
IN DEPOSITS**

ABSOLUTE NET  
8.4 YEARS REMAINING  
ANNUAL RENT INCREASES

## TENANT HIGHLIGHT: BMO Bank

BMO Bank provides a broad range of personal banking products and solutions across the United States. Established in 1882 as Harris Bank, and owned by BMO Financial Group since 1984, BMO Bank has grown to be one of the largest banks in the Midwest serving personal, commercial and affluent customers.

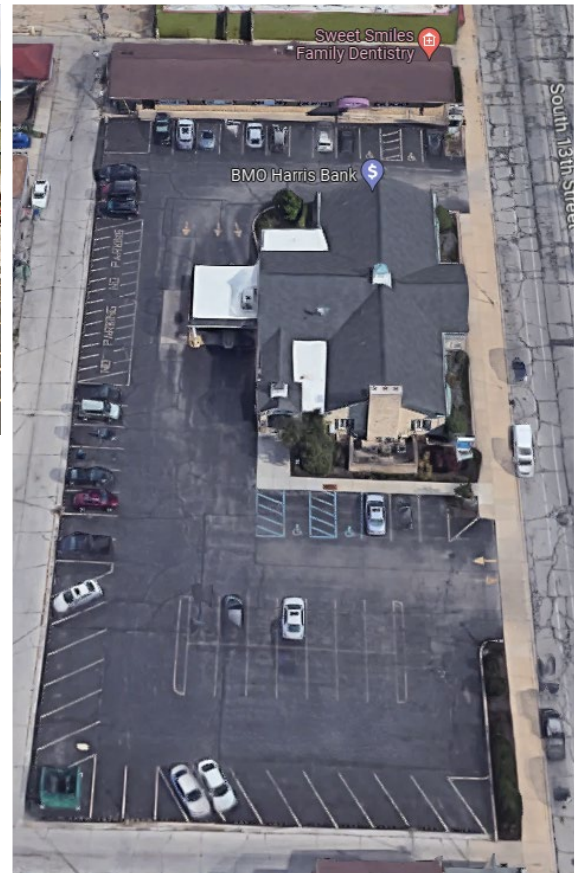
BMO Bank provides a broad range of personal banking products and solutions through over 1,000 branches, and fee-free access to over 40,000 ATMs across the United States. These include solutions for everyday banking, financing, investing, as well as a full suite of integrated commercial and financial advisory services. BMO Bank's commercial banking team provides a combination of sector expertise, local knowledge and mid-market focus throughout the U.S.

## PROPERTY HIGHLIGHTS

- **100% Leased to BMO - Absolute NNN - Annual Rent Increases**
  - 8.4 years of remaining first term – Lease until 2034
  - Three (3), Five (5)-Year Renewal Options
  - Annual increases of one percent (1%) + YOY CPI Increase
    - 2/1/2025 Increase: 3.89%
    - 2/1/2024 Increase: 4.35%
    - 2/1/2023 Increase: 7.45%
- **Lease Term - 2025 Branch Refresh**
  - Commencement Date: January 28, 2022
  - Expiration Date: January 27, 2034
  - BMO is in the process of completing a full branch refresh
- **Significant Deposits & Market Share Leader**
  - Over \$51 million in total 2024 deposits
  - 11.68% market share
- **Excellent Credit Tenancy**
  - A+ (S&P) / Aa2 (Moody's) rated credit with over \$1.44 trillion in assets
- **Multi-Lane Drive Thru & Ample Parking**
  - Two (2) lane drive thru with 59 surface parking spaces
- **Excellent Visibility and Signage**
  - Located on the main commercial thoroughfare



# PHOTOS

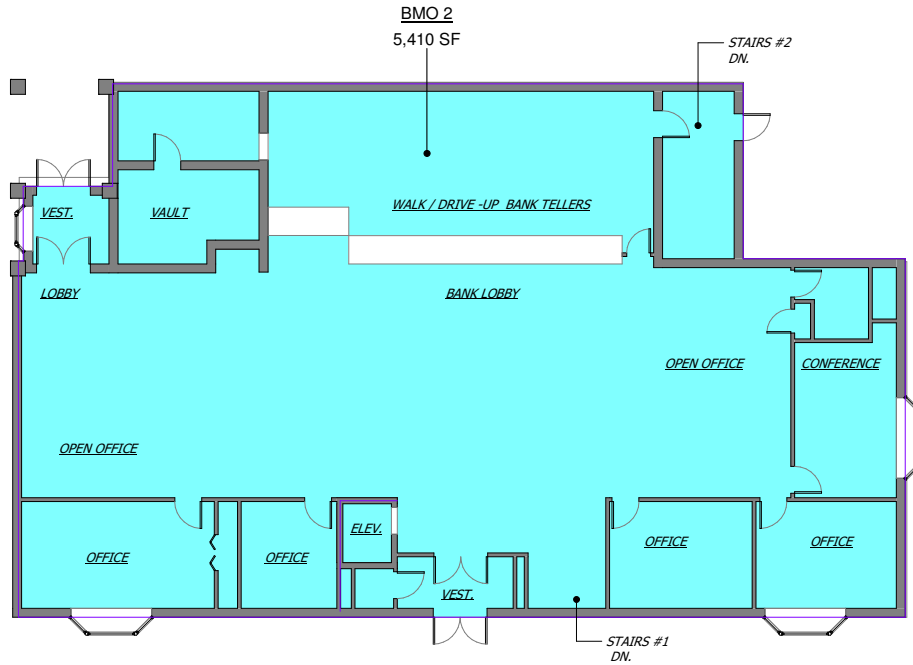


# FLOOR PLANS

## AREA STATISTICS - FIRST FLOOR

Name	Area Type	Area
BMO 2	Office Area	5,410 SF
Office Area		5,410 SF
Grand total		5,410 SF

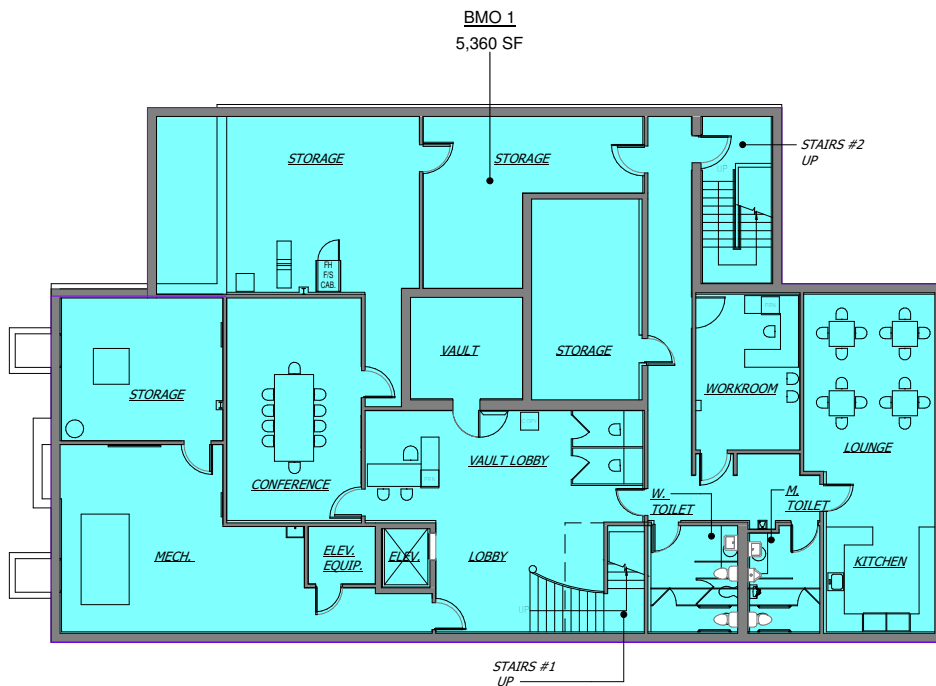
\*APPROXIMATE AREA



## AREA STATISTICS\* - LOWER FLOOR

Name	Area Type	Area
BMO 1	Office Area	5,360 SF
Office Area		5,360 SF
Grand total		5,360 SF

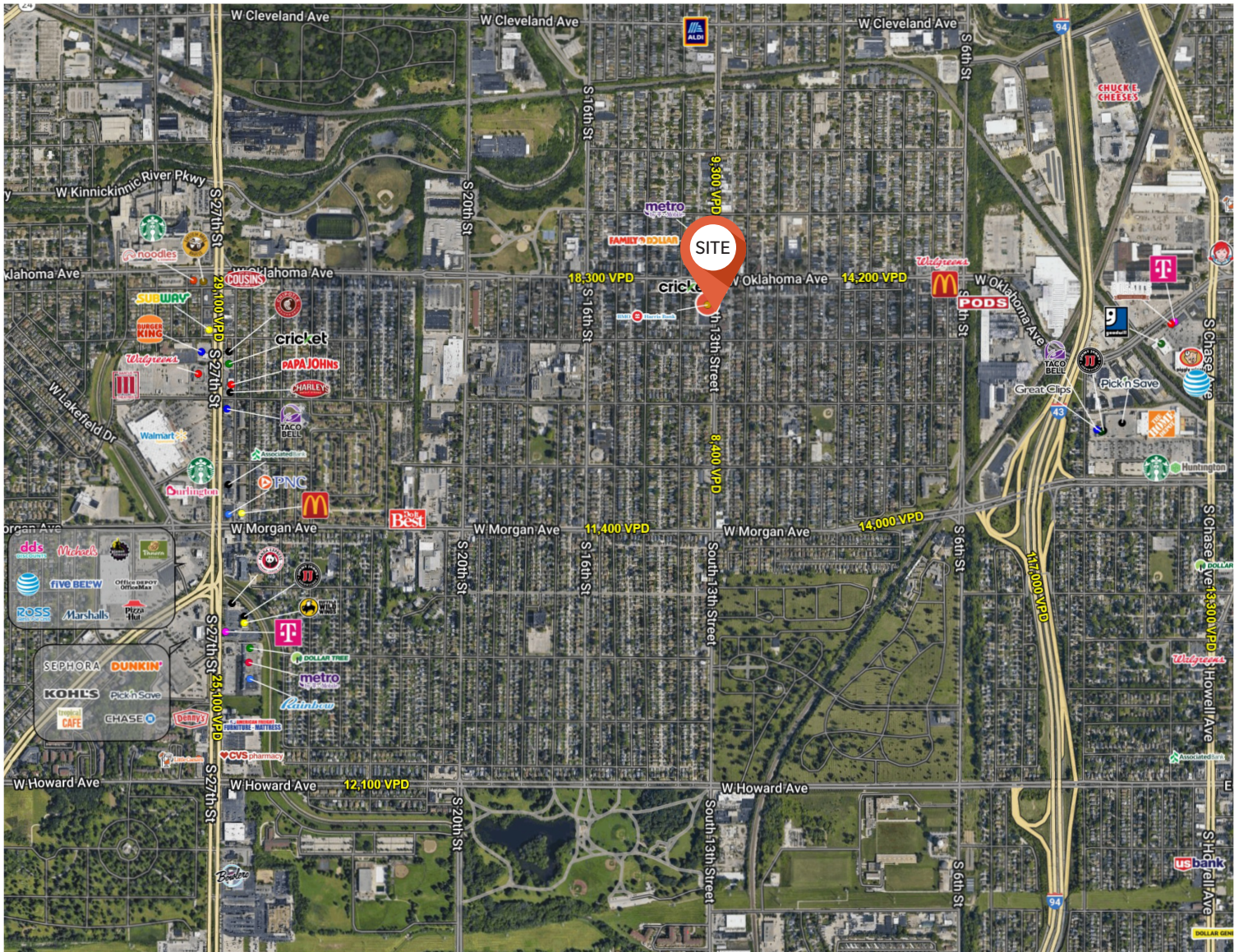
\*APPROXIMATE AREA



[illegible]



# SURROUNDING AREA



## Demographics

### 1 MILE

### 3 MILE

### 5 MILE

#### Population

26,222

172,020

369,197

#### Avg HH Income

\$65,298

\$69,611

\$72,302



# MARKET HIGHLIGHTS

## MILWAUKEE REGION - Cooler by the Lake

**Milwaukee ranks ninth among cities nationwide in the number of corporate headquarters per capita.** With just over 1.5 million residents in the Milwaukee Metro Area, it is the largest city in the state of Wisconsin, the fifth highest populated in the Midwest and the 31st in the United States. Located just north of Chicago on the western shore of Lake Michigan, Milwaukee is known for its historic architecture, diverse culture and Midwestern charm.

One of the primary drivers of new investment in southeastern Wisconsin is the improved business climate, which is attracting the attention of businesses nationwide. Several legislative changes including tax reductions, right-to-work policies and a more flexible regulatory structure have made Wisconsin an increasingly attractive place to locate a business. The region's reputation as an advanced manufacturing center; its proximity to the largest concentration of fresh water in the world; access to air, rail and water transportation; and a skilled labor force known for its work ethic have made the region a competitive place to do business.

### Economic Overview:

- With \$130.9 billion of GDP in 2023, Milwaukee ranked 39th of all metro areas in the United States. Milwaukee continues to attract business with its rapid building boom of the past decade, which helped Milwaukee outpace cities like Chicago, Philadelphia and Houston in Inc.com's Surge Cities "50 Best Places in American for Starting a Business".
- Providing a significant boost to the city's economy was the success of the Milwaukee Bucks, winners of the 2021 NBA Finals. The championship run drew tens of thousands of fans to the Deer District every night and increasingly filled bars, restaurants, and hotels along the way. Over 100,000 people flocked to the Deer District and Fiserv Forum for Game 6 of the championship and the ensuing victory parade drew in an additional 300,000 fans to celebrate the occasion, marking one of the largest worldwide social gatherings since the onset of the pandemic. While the playoff run was a welcome economic boost for the metro, events like these are ultimately temporary boosts. More importantly, the fact remains that Milwaukee's economic base remains strong and diverse, which has helped it outperform the national average during such unprecedented times.
- Milwaukee's high concentration of education- and healthcare-related employment, due in part to local institutions such as Marquette University, the University of Wisconsin-Milwaukee, and the Milwaukee Regional Medical Center provide a strong foundation for the region. According to the U.S. Bureau of Labor Statistics, Milwaukee has an unemployment rate of 2.5% for Q12023. This rate outpaces the regional and national rate of 3.6% and 3.4%, respectively, and ranks Milwaukee as having the 3rd lowest unemployment rate for all Large Metropolitan Areas.

**Urban Investment: \$9 Billion & Counting.** Downtown Milwaukee is the economic hub of Southeastern Wisconsin and there has never been a better time to invest. Since 2015, over \$5.4 billion has been invested in completed private and public projects and more than \$3.6 billion is currently under construction or proposed to start soon, spurring significant momentum that has re-established downtown as the vibrant economic center of Wisconsin.





# MARKET HIGHLIGHTS

## Improved Business Climate

One of the primary drivers of the new investment in southeastern Wisconsin is the improved business climate, which is attracting the attention of businesses and site locators nationwide. Several legislative changes, including tax reductions, right-to-work policies and a more flexible regulatory structure have made Wisconsin an increasingly attractive place to locate a business. The region's reputation as an advanced manufacturing center; its proximity to the largest concentration of fresh water in the world; its access to air, rail and water transportation; and a skilled labor force known for its work ethic have made the region a competitive place to do business.

## Air Service

The primary airport serving the Milwaukee Region is General Mitchell International Airport, which is located less than 15 minutes south of Milwaukee's downtown. Mitchell's ten commercial airlines serve seven million passengers a year, offering nonstop service to 39 destinations coast-to-coast, with 160 international destinations available from Milwaukee with easy, one-stop connections. Major carriers include Southwest Airlines, United, American and Delta.

For the second straight year, MKE has received an ASQ award for Best Airport by Size and Region. MKE competed with airports across North America with 5 to 15 million annual passengers. MKE is one of only three airports in this size category – and one of only ten airports of any size in the U.S. – to earn a 2022 ASQ Best Airport award.

In all, the region includes eight general aviation airports that provide service to corporate and personal aircraft. Chicago's O'Hare International Airport, the sixth busiest in the world, is also just a 75-minute drive to the south.

## Port Facilities

The Port of Milwaukee handles more than two million tons of cargo per year, serving both domestic and international locations through the Great Lakes, the St. Lawrence Seaway and the Gulf of Mexico, via the inland waterway system. Its 16 berths can accommodate vessels up to 1,000 feet long.

## Railroads

The Milwaukee Region is served by both freight and passenger service. Freight service is provided through the Canadian Pacific Railway, Canadian National Railway, Union Pacific Railroad and the Wisconsin & Southern Railroad Company. Passenger service is provided through Amtrak, the federal passenger line that offers seven daily round-trip trains to Chicago as well as service to the Twin Cities and beyond; and Metra, a commuter line that connects the Milwaukee Region with Chicago and its suburbs.

## Financing and Technical Assistance

The Milwaukee Region offers a variety of financing options in addition to traditional business loans. State, county and local governments all offer aggressive packages for start-ups, expansions and relocations, while local angel investors and venture capital firms stand ready to help entrepreneurs realize their dreams. Training and technical assistance is also readily accessible.

## Low Business Costs

Hard-working residents and Midwestern frugality help to ensure productivity and profitability. Land and leasing costs are lower than the national average. Not surprisingly, our low costs and skilled workforce have made the Milwaukee Region one of the hottest industrial markets in the nation.



# MARKET HIGHLIGHTS



## Corporate Headquarters

Milwaukee's central location and high quality of life lend itself to corporate headquarter operations. Fourteen Fortune 500 & 1000 companies are headquartered in Milwaukee, while more than 40 Fortune 500 companies have major Milwaukee operations such as General Electric, Northwestern Mutual and MillerCoors. Companies headquartered in Milwaukee are national leaders in industries such as air travel services, banking, data processing, insurance, law, manufacturing, money management, retail department stores and securities. Northwestern Mutual continues to expand its impact on Milwaukee's economy, following the delivery of its \$450 million, 34-story waterfront headquarters and the nearing completion of the \$500 million "Phase 2" North Office redevelopment. Additionally, Microsoft's recent \$3.3 billion dollar investment in Southeast Wisconsin has proven that Wisconsin now has a prominent place in the industrial sector and that its potential for growth isn't slowing down.

## Transportation

Thirty-three percent (33%) of the nation's population is within 500 miles of the Milwaukee Region, which offers easy access to all major forms of transportation – highway, air, water and rail. Two interstates – I-94 and I-43 – intersect the region, and a third interstate – I-90 – passes nearby. The commute time in the metro area averages 22.4 minutes, which is one of the shortest in major U.S. urban areas.

## Employment

An educated workforce, low business costs, easy access to financing, and efficient infrastructure have helped businesses succeed and grow. Over the past decade, the city has undergone an economic and cultural renaissance with businesses and developers investing hundreds of millions of dollars into new corporate headquarters, office buildings, residential developments and entertainment venues to cement Milwaukee's position as a 21st century city.

Home to 14 Fortune 1000 companies, 8 Fortune 500 companies, and 10 Colleges/Universities, Milwaukee's workforce lives up to its hardworking reputation. Milwaukee was ranked fifth on Forbes' list of "Up-and-Coming Tech Cities," while Wisconsin earned recognition as a top 20 state for business by Chief Executive magazine, highlighting the region's growing reputation as a hub for innovation and commerce.

## LARGEST EMPLOYERS

Company	Business Sector	Employment
Aurora Health Care	Health Care System	25,900
Ascension Wisconsin	Health Care System	15,500
Froedtert Health	Health Care System	10,900
Kroger Co./Roundy's	Food Distributor & Retailer	8,300
Kohl's Corporation	Department Store	7,800
Quad/Graphics, Inc.	Commercial Printer	7,500
GE Healthcare Technologies	Medical Diagnostic Imaging Systems	6,000
Northwestern Mutual	Life & Disability Insurance & Annuities	5,600
Medical College of Wisconsin	Medical School	5,300
Children's Hospital & Health System	Pediatric Health Care Services	5,000
ProHealth Care, Inc.	Health Care System	4,800
WEC Energy Group	Electric & Natural Gas Utility	4,300
Goodwill Industries of SE Wisconsin	Training, Packaging & Assembly Services	4,100
AT&T Wisconsin	Telecommunication Services	3,500
US Bank	Bank Holding Company	3,500
BMO Harris Bank	Bank Holding Company	3,400
Marcus Corporation	Operator of Hotels & Movie Theaters	3,200
FIS	Financial Data & Processing Systems	3,200
Johnson Controls	Control Systems, Batteries & Automotive Interiors	3,000
Rockwell Automation	Industrial Automation Products & Systems	2,900
Marquette University	Higher Education University	2,800
Harley-Davidson, Inc.	Motorcycles & Related Products	2,700