

INDU  
STRY

CREATIVE OFFICE  
±1,526 RSF TO ±61,583 RSF

BROKER BONUS

\$2.00/RSF FOR 3+ YEAR LEASES

\$4.00/RSF FOR 5+ YEAR LEASES

# TAF T BUILDING 1680 VINE ST HOLLYWOOD

FOR LEASE

INDUSTRYPARTNERS.COM  
310 395 5151  
CA BRE No. 01900833

ROBERT D ERICKSON  
re@industrypartners.com  
CA BRE No. 01123601

BRYAN CARNES  
bc@industrypartners.com  
CA BRE No. 01908642



UNIT	BUILDING SF	
204	±2,555 RSF	
212	±4,780 RSF	
312	±5,799 RSF	
400	±10,185 RSF	
500	±2,181 RSF	
518	±1,579 RSF	
614	±4,261 RSF	
700	±3,967 RSF	
716	±1,526 RSF	DIVISIBLE TO ±800 RSF
800	±4,412 RSF	COMBINABLE TO ±8,255 RSF
805	±420 RSF	
812	±443 RSF	
813	±468 RSF	
814	±378 RSF	
815	±565 RSF	
816	±1,179 RSF	
818	±390 RSF	
900	±3,511 RSF	
908	±375 RSF	
912	±1,840 RSF	
916	±777 RSF	
918	±797 RSF	
1012	±1,834 RSF	
1018	±1,559 RSF	
1100	±3,830 RSF	
1200	±6,157 RSF	

**ASKING RATE**

\$2.95 - \$3.95/SF per Mo. FSG

**TERM**

1-10 Years

No warranty or representation is made to the accuracy of the foregoing information. Terms of sale or lease are subject to change or withdrawal without notice.

©2025 INDUSTRY PARTNERS, INC.

**PARKING**

Surface lot (1720 Vine):	\$105/month
W Hotel Valet:	\$250/month
Trader Joes:	\$180/month
City of LA lot:	\$160/month

**BROKER BONUS**

**\$2.00/RSF FOR 3+ YEAR LEASES**

**\$4.00/RSF FOR 5+ YEAR LEASES**

**FEATURES**

- + Newly constructed spec suites featuring glass offices, polished concrete floors, exposed brick walls, exposed ceilings and well appointed kitchens
- + Large, expansive, and operable original wood-framed windows
- + Located in heart of Hollywood and its major amenities including Equinox, Dream & Aster Hotels, Katsuya, Sugarfish, Sweetgreen, Trejo's, The Waffle and the W Hollywood
- + Easy access to 101 Freeway as well as the to Metro Red Line Station
- + 99 Walk score
- + Pet friendly
- + Door man 24/7 security
- + In the building on site we have a new Coffee vendor called "Sana'a Cafe (Yemeni style coffee house)" and a new restaurant called "RDEN Bar & Restaurant"

## SANA'A CAFE

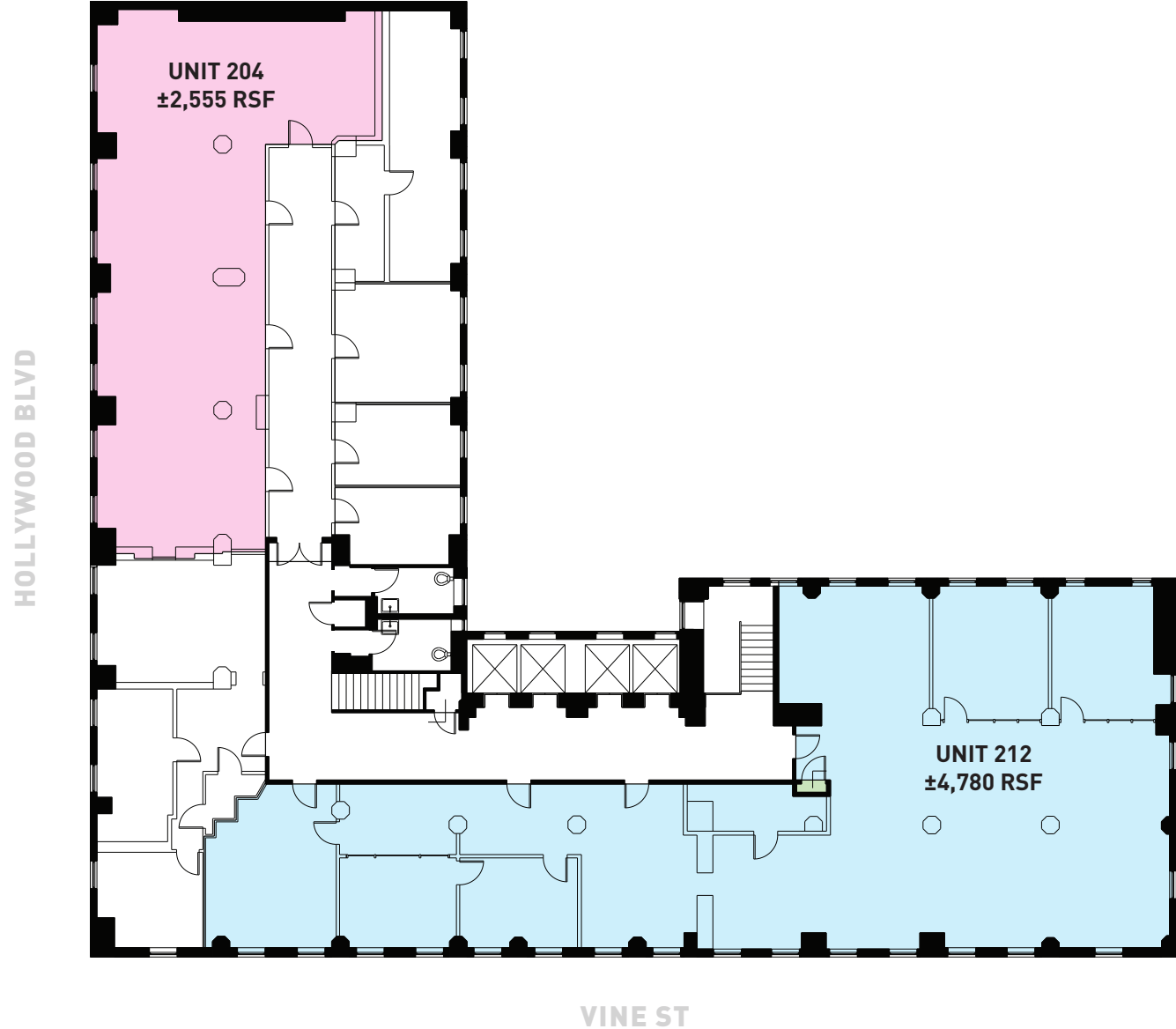
Sana'a Cafe, a newly opened gem in Hollywood's historic Taft Building at 6290 Hollywood Blvd, brings the rich flavors of Yemen to the heart of Los Angeles. Specializing in organic Yemeni coffee and traditional Adeni chai, the cafe offers a unique experience that reflects Yemen's rich heritage and distinctive culture. The menu features a variety of beverages, including spiced coffees and teas, complemented by an array of pastries and desserts like baklava and milk cakes. With its warm ambiance and commitment to quality, Sana'a Cafe invites patrons to embark on a flavorful journey through Yemen's coffee traditions.



2ND FLOOR

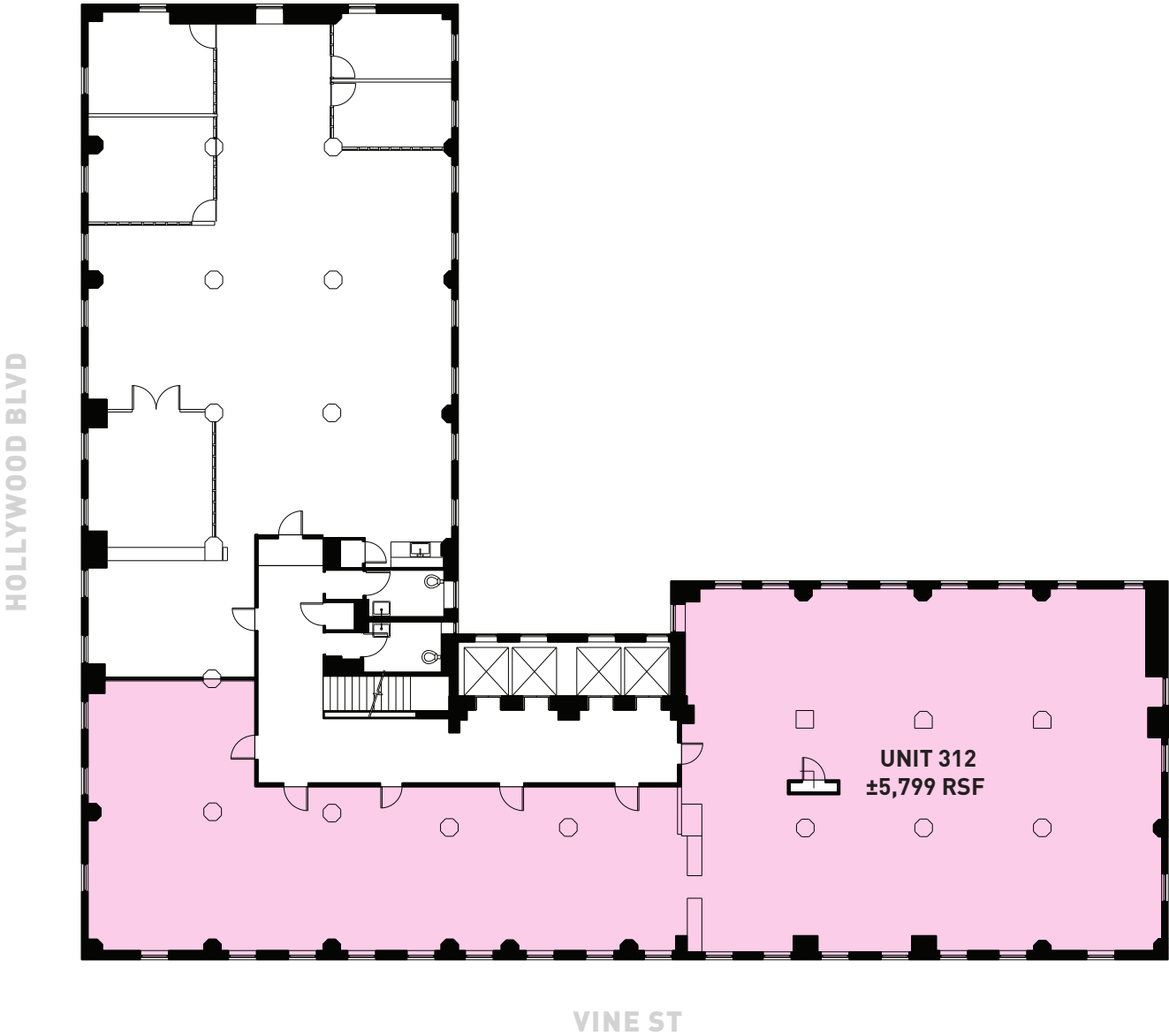
Unit 204 ± 2,555 RSF

Unit 212 ± 4,780 RSF



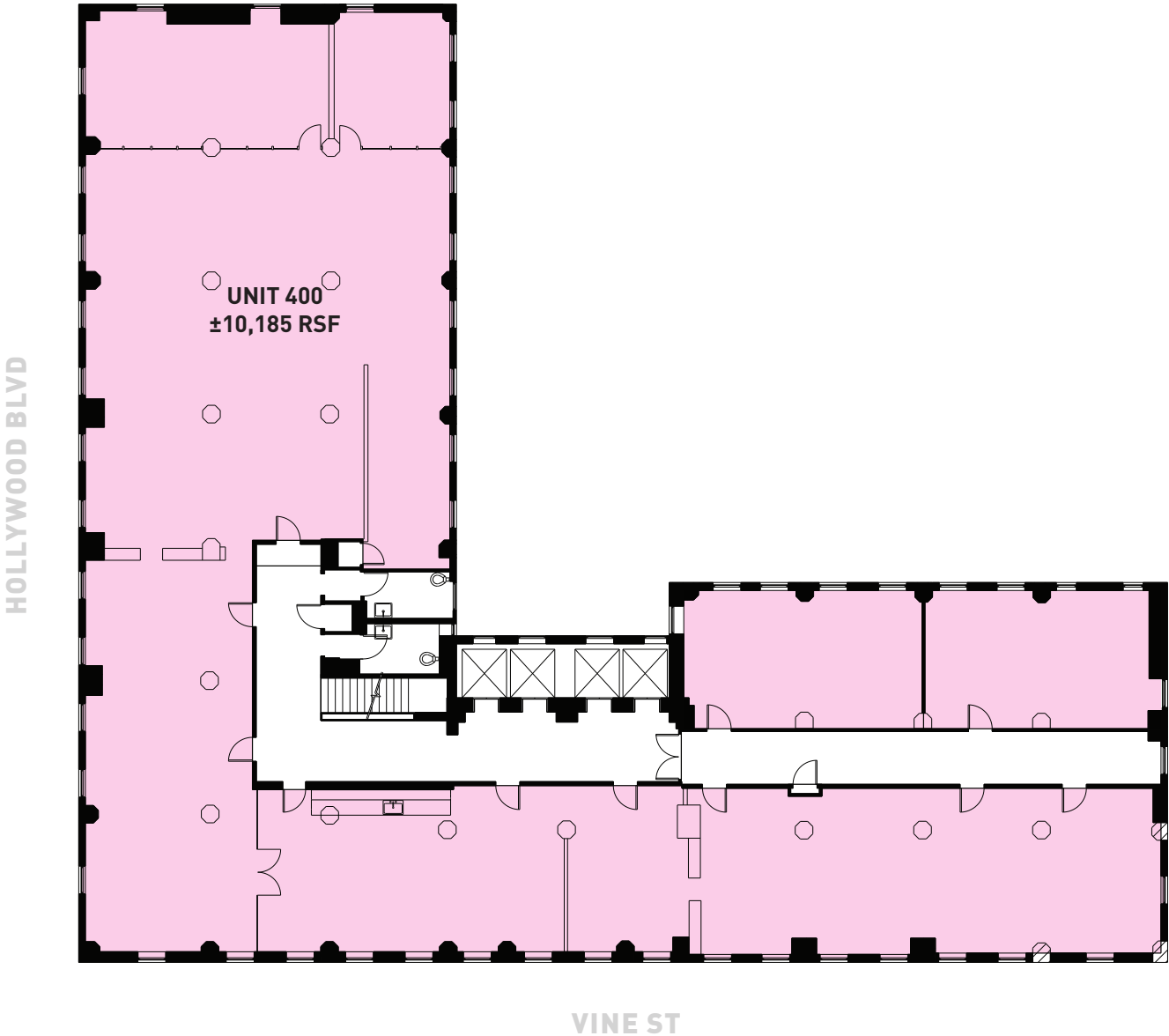
NOT TO SCALE.  
Floor plan for information purposes only.  
Layout and furnishings may vary

3TH FLOOR  
Unit 312      ± 5,799 RSF



NOT TO SCALE.  
Floor plan for information purposes only.  
Layout and furnishings may vary

4TH FLOOR  
Unit 400 ± 10,185 RSF

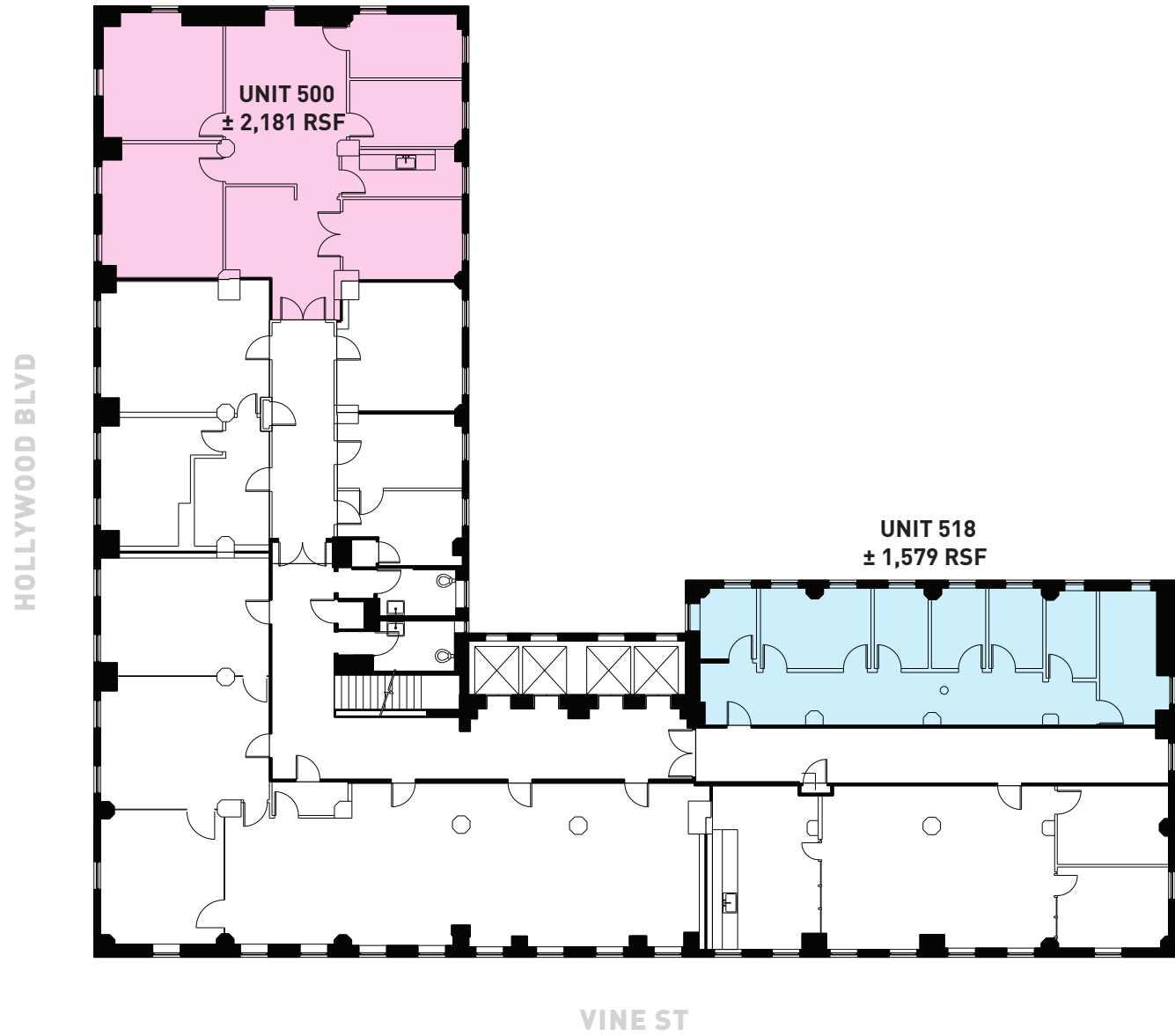


NOT TO SCALE.  
Floor plan for information purposes only.  
Layout and furnishings may vary

5TH FLOOR

Unit 500 ± 2,181 RSF

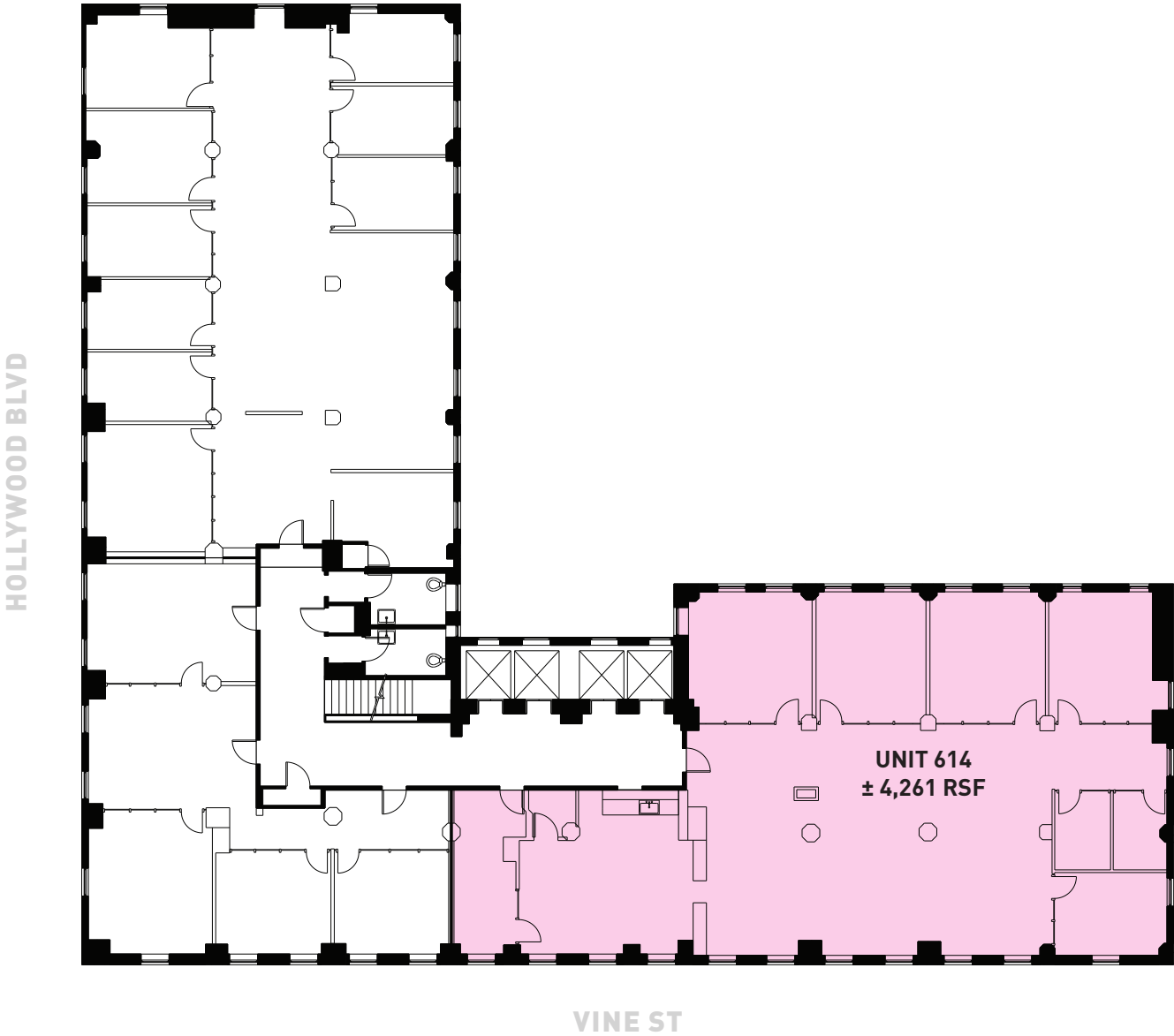
Unit 518 ± 1,579 RSF



NOT TO SCALE.  
Floor plan for information purposes only.  
Layout and furnishings may vary



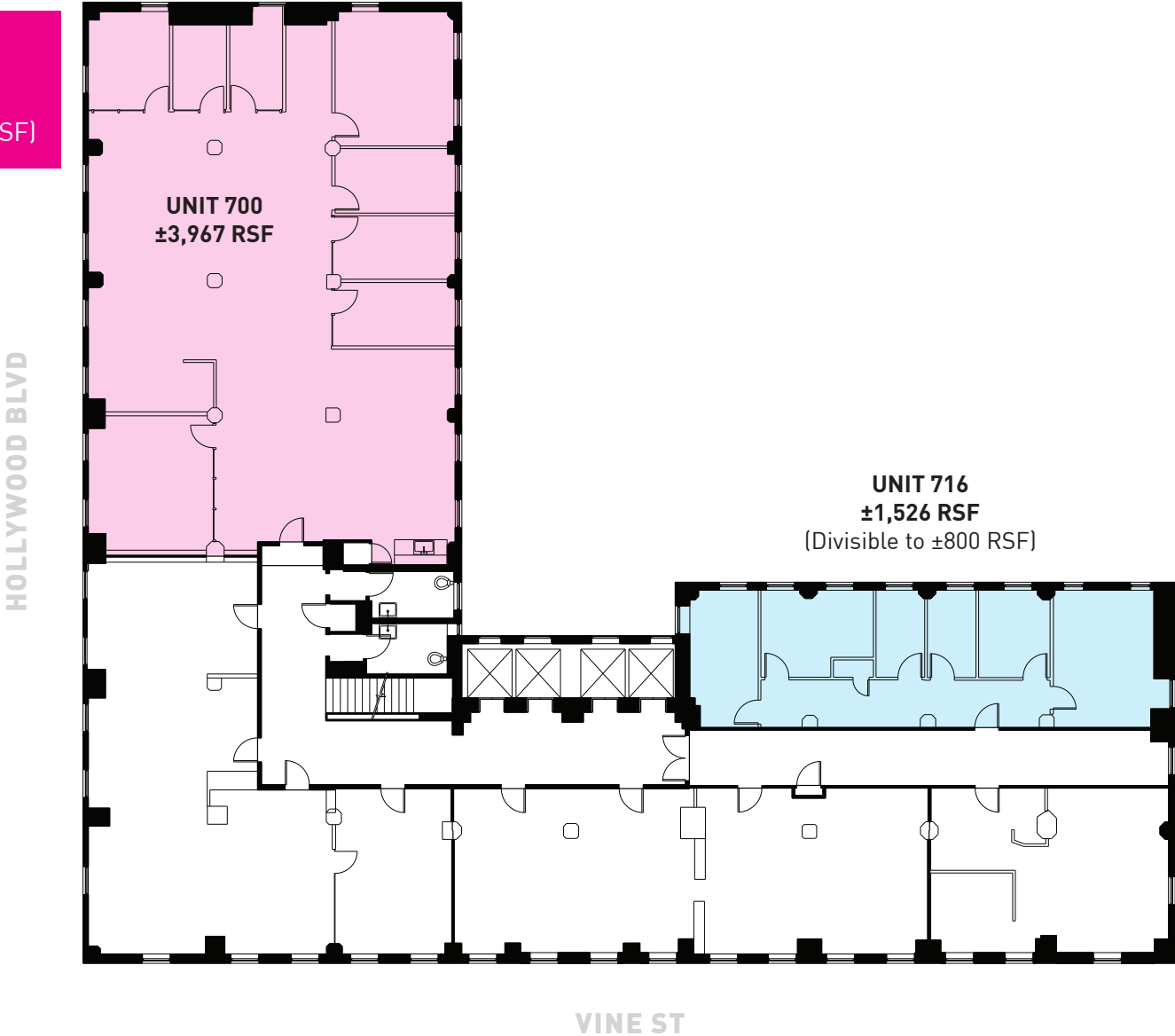
5TH FLOOR  
Unit 614      ± 4,261 RSF



NOT TO SCALE.  
Floor plan for information purposes only.  
Layout and furnishings may vary

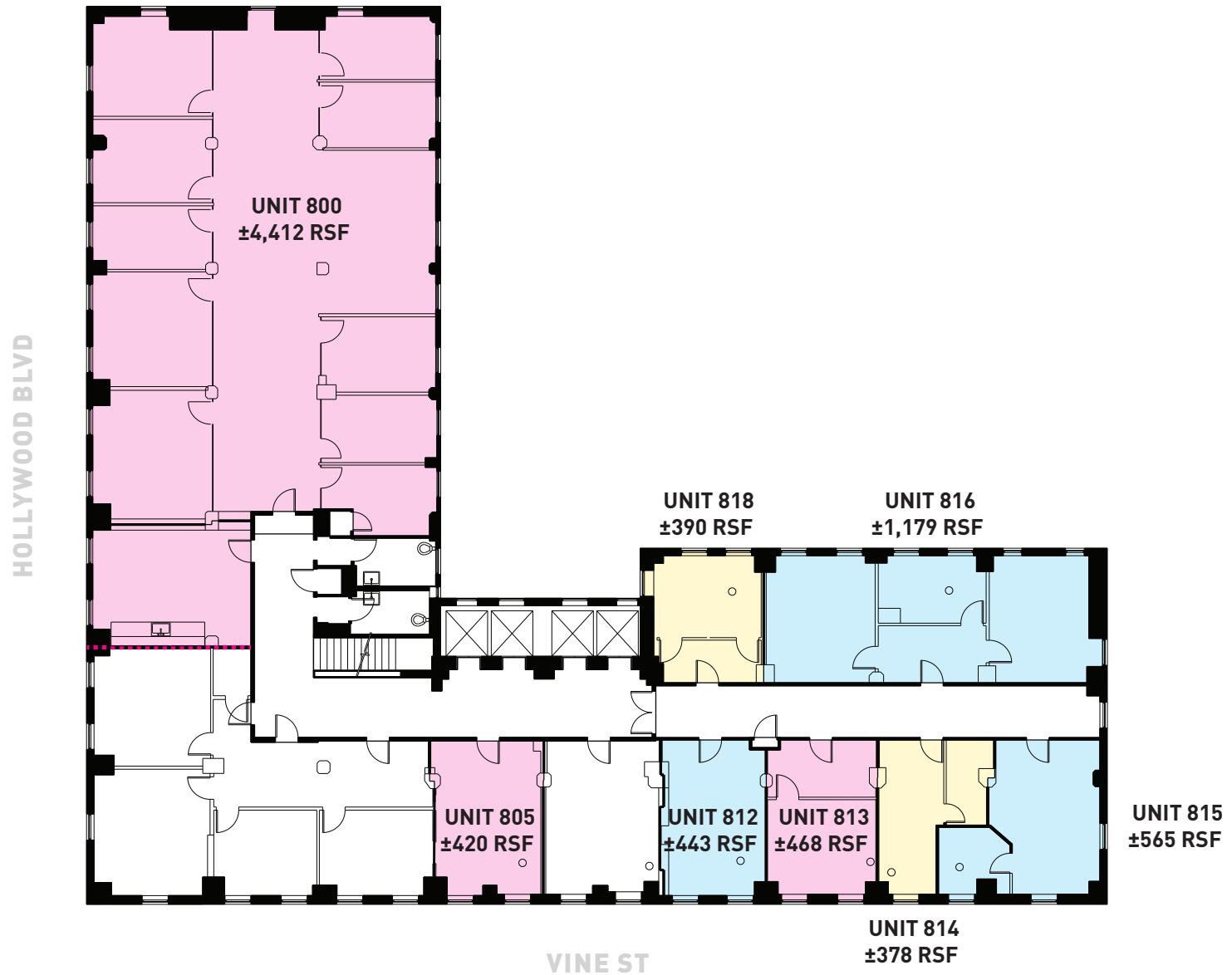


7TH FLOOR  
Unit 700 ± 3,967 RSF  
Unit 716 ± 1,526 RSF  
(Divisible to ±800 RSF)



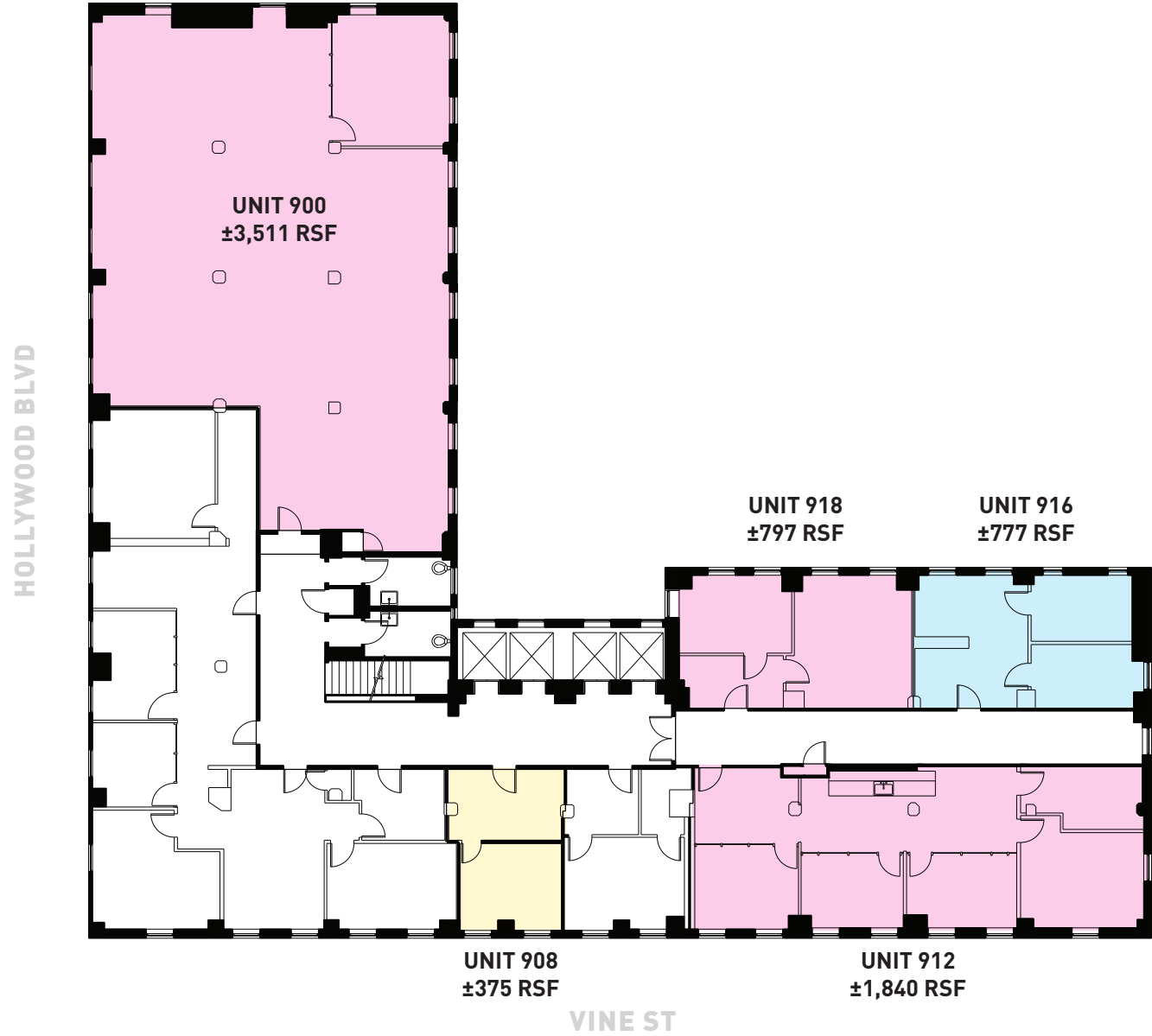
NOT TO SCALE.  
Floor plan for information purposes only.  
Layout and furnishings may vary

8TH FLOOR	
Unit 800	±4,412 RSF
Unit 805	±420 RSF
Unit 812	±443 RSF
Unit 813	±468 RSF
Unit 814	±378 RSF
Unit 815	±565 RSF
Unit 816	±1,179 RSF
Unit 818	±390 RSF



NOT TO SCALE.  
Floor plan for information purposes only.  
Layout and furnishings may vary

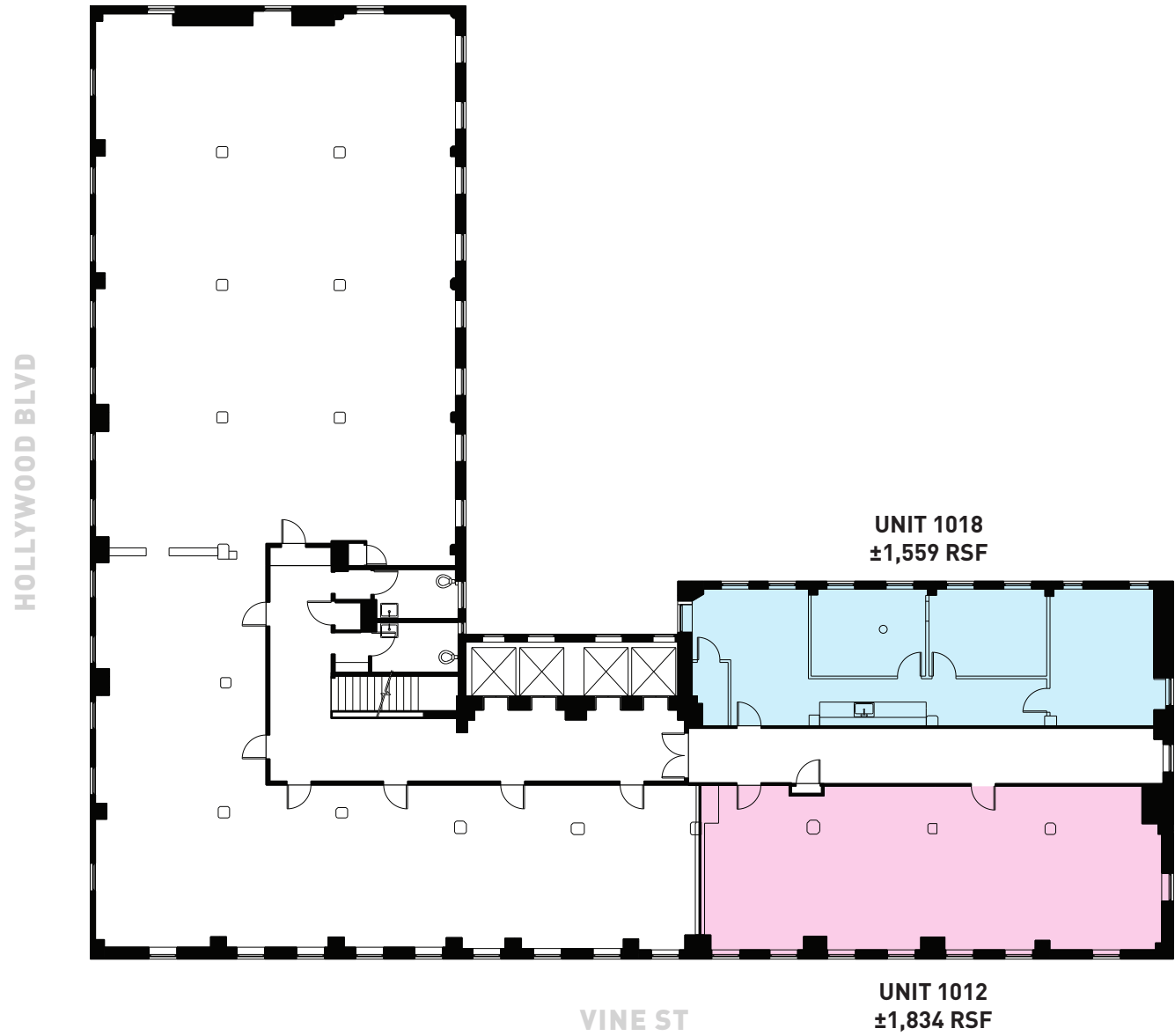
9TH FLOOR	
Unit 900	± 3,511 RSF
Unit 908	± 375 RSF
Unit 912	± 1,840 RSF
Unit 916	± 777 RSF
Unit 918	± 797 RSF



NOT TO SCALE.  
Floor plan for information purposes only.  
Layout and furnishings may vary

10TH FLOOR

Unit 1012	± 1,834 RSF
Unit 1018	± 1,559 RSF

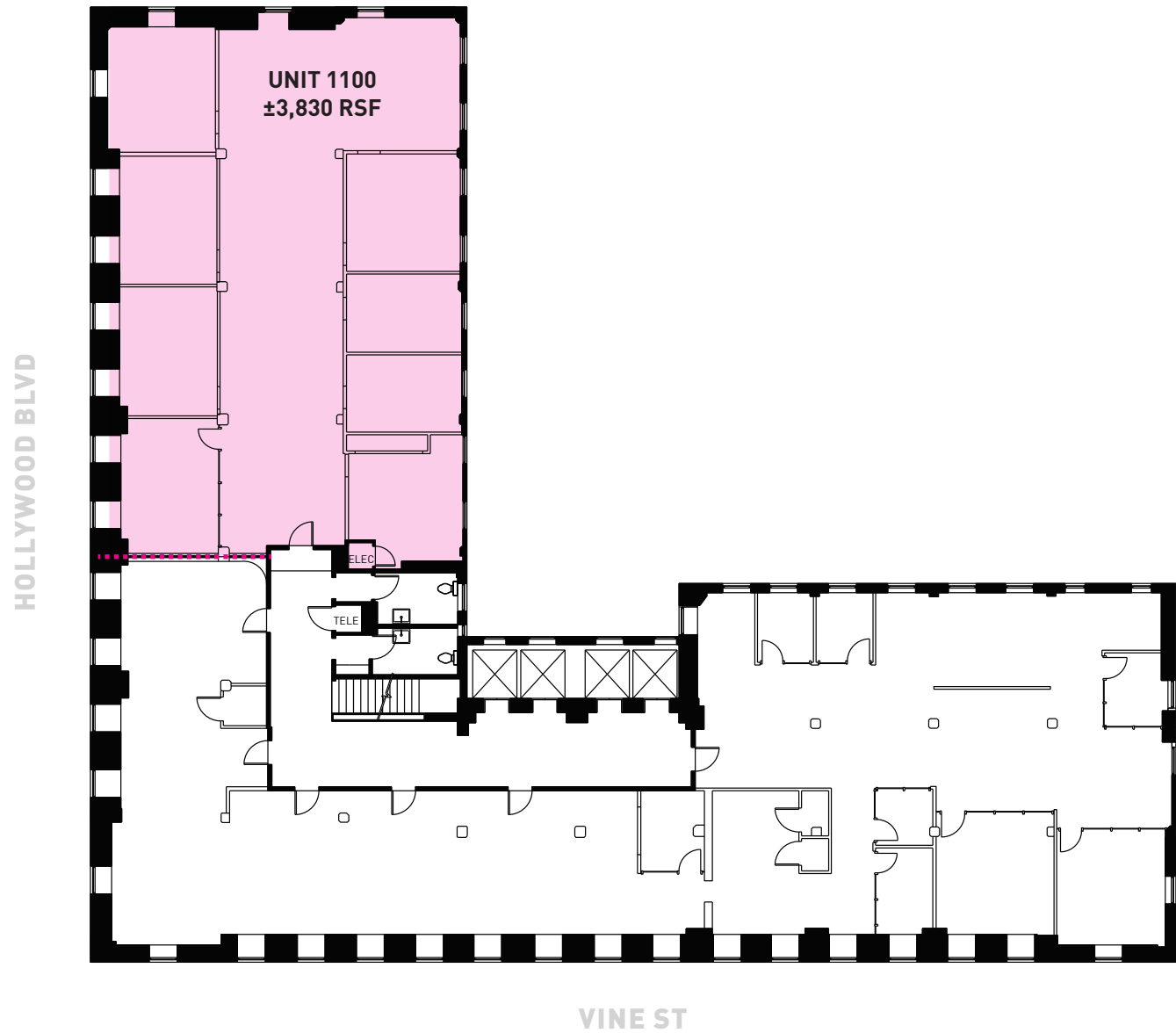


NOT TO SCALE.  
Floor plan for information purposes only.  
Layout and furnishings may vary



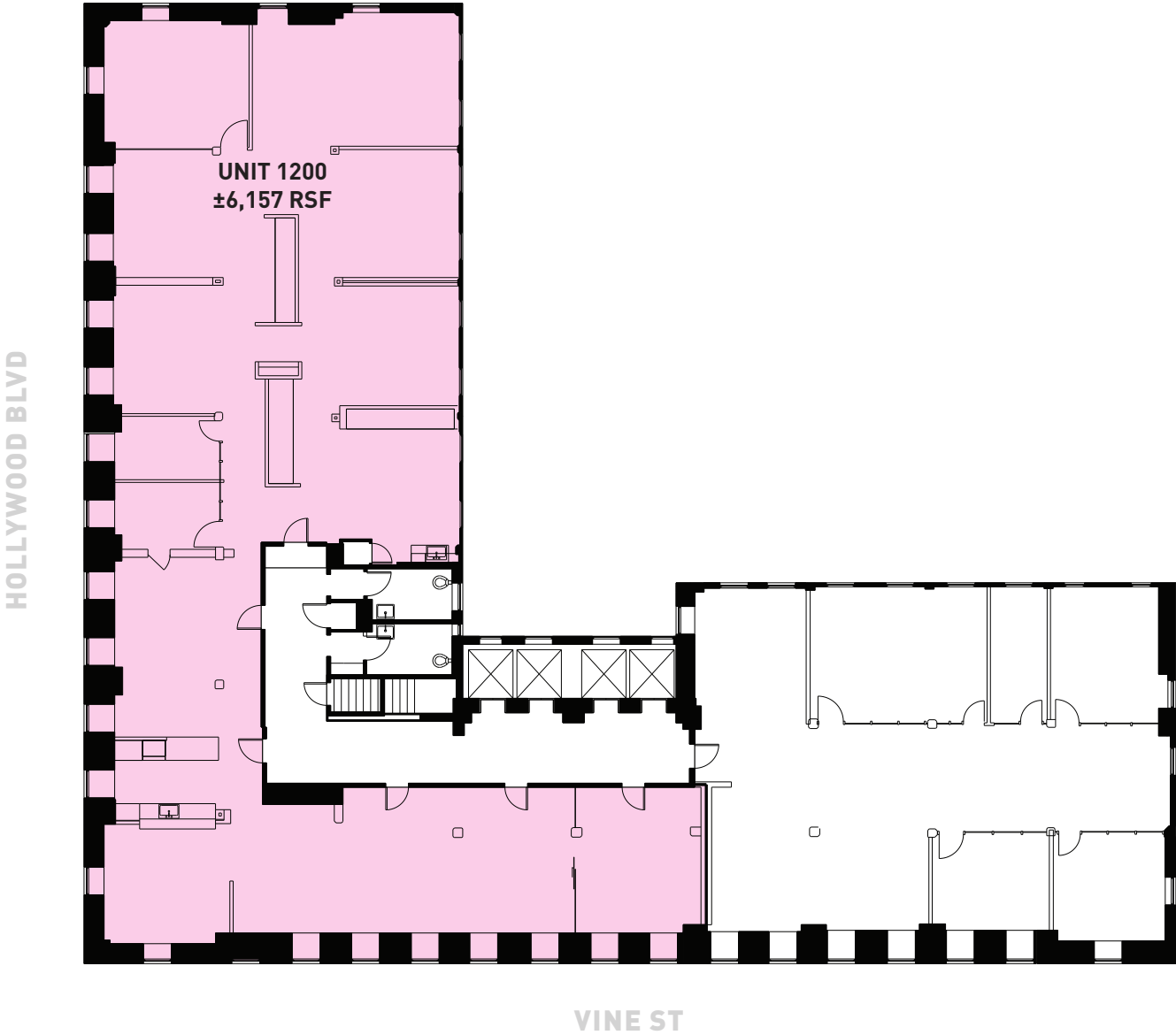
11TH FLOOR

Unit 1100 ± 3,830 RSF



NOT TO SCALE.  
Floor plan for information purposes only.  
Layout and furnishings may vary

11TH FLOOR  
Unit 1200 ± 6,157 RSF



NOT TO SCALE.  
Floor plan for information purposes only.  
Layout and furnishings may vary



FOR LEASE

CREATIVE OFFICE

1680 VINE ST HOLLYWOOD CA 90028

INTERIOR PHOTOS





FOR LEASE

CREATIVE OFFICE

1680 VINE ST HOLLYWOOD CA 90028

INTERIOR PHOTOS





FOR LEASE

CREATIVE OFFICE

1680 VINE ST HOLLYWOOD CA 90028

INTERIOR PHOTOS



## TAFT BLDG

### SINCE 1923

The Taft Building is and has been at the crossroads of Hollywood's physical, economic and cultural development since the building's construction in 1923. Over its history, the Taft Building has maintained a relationship with the region's entertainment industry, and the building is undoubtedly ingrained in the energetic and charismatic story of Hollywood.

On a site purchased by A.Z. Taft, Jr, the building was designed by famed Los Angeles architects Percy A. Eisen and Albert R. Walker.

Soon after its opening in 1923, the Taft Building quickly became an epicenter for Hollywood's burgeoning entertainment business. It was home to the Academy of Motion Picture Arts and Sciences, early entertainment lawyers, casting companies, and for a period of time Variety newspaper rented out offices in the building. The building's notable tenants also included Charlie Chaplin and Will Rogers.

As Hollywood continues its progression toward a vibrant live/work and entertainment neighborhood, the Taft Building stands as an inspiring remnant of the past and an ardent leader of Hollywood's future.





### About the neighborhood

Hollywood is popular for its glamorous image, and the entertainment industry plays a huge role in shaping the neighborhood's personality. If you're looking to live and work in an area with a lively music, film, and television scene, then Hollywood is the place for you. Local key employers include Netflix, BBC, Viacom, BuzzFeed Trailer Park, Live Nation, and Technicolor.

Central Los Angeles is a web of freeways, making transportation to other areas quick and easy. 5857 Santa Monica lies in the center of this freeway system, with access to the Interstate 101 (Hollywood Freeway), Interstate 110 (Harbor Freeway), Interstate 5 (Santa Ana Freeway), Interstate 10 (Santa Monica Freeway), interstate 60 (Pomona Freeway) and interstate 710 (Long Beach freeway).

**1-MIN DRIVE TO 101 FWY**  
**15-20-MIN DRIVE TO DTLA**

No warranty or representation is made to the accuracy of the foregoing information. Terms of sale or lease are subject to change or withdrawal without notice.

©2025 INDUSTRY PARTNERS, INC.

