



## Demographic and Income Comparison Profile

Grand Avenue Center  
1615 Grand Avenue Parkway Pflugerville TX 78660  
Rings: 1, 3, 5 mile radii

Latitude: 30.4555  
Longitude: -97.6590

	1 mile	3 mile	5 mile
<b>Census 2010 Summary</b>			
Population	8,472	88,380	196,318
Households	3,133	34,112	76,096
Families	1,985	21,478	47,883
Average Household Size	2.70	2.59	2.57
Owner Occupied Housing Units	1,465	18,037	40,759
Renter Occupied Housing Units	1,668	16,076	35,339
Median Age	32.0	31.5	31.9
<b>Census 2020 Summary</b>			
Population	9,715	111,229	247,079
Households	3,721	44,937	97,987
Average Household Size	2.61	2.47	2.51
<b>2022 Summary</b>			
Population	10,375	117,349	257,291
Households	3,972	47,651	102,552
Families	2,390	28,516	62,064
Average Household Size	2.61	2.45	2.50
Owner Occupied Housing Units	1,926	22,385	52,777
Renter Occupied Housing Units	2,046	25,266	49,775
Median Age	34.0	33.6	34.1
Median Household Income	\$79,028	\$81,422	\$84,403
Average Household Income	\$93,163	\$101,998	\$107,147
<b>2027 Summary</b>			
Population	11,039	122,424	270,597
Households	4,259	50,043	108,339
Families	2,567	29,964	65,608
Average Household Size	2.59	2.44	2.48
Owner Occupied Housing Units	2,123	23,560	55,819
Renter Occupied Housing Units	2,136	26,483	52,520
Median Age	33.4	33.1	33.6
Median Household Income	\$89,027	\$91,682	\$94,004
Average Household Income	\$108,397	\$117,468	\$122,251
<b>Trends: 2022-2027 Annual Rate</b>			
Population	1.25%	0.85%	1.01%
Households	1.41%	0.98%	1.10%
Families	1.44%	1.00%	1.12%
Owner Households	1.97%	1.03%	1.13%
Median Household Income	2.41%	2.40%	2.18%

Source: Esri forecasts for 2022 and 2027. U.S. Census Bureau 2010 decennial Census data converted by Esri into 2020 geography.

September 28, 2022



## Demographic and Income Comparison Profile

Grand Avenue Center  
1615 Grand Avenue Parkway Pflugerville TX 78660  
Rings: 1, 3, 5 mile radii

Latitude: 30.4555  
Longitude: -97.6590

2022 Households by Income	1 mile		3 mile		5 mile	
	Number	Percent	Number	Percent	Number	Percent
<\$15,000	199	5.0%	1,956	4.1%	3,744	3.7%
\$15,000 - \$24,999	223	5.6%	2,204	4.6%	4,246	4.1%
\$25,000 - \$34,999	223	5.6%	3,040	6.4%	5,344	5.2%
\$35,000 - \$49,999	481	12.1%	5,518	11.6%	11,344	11.1%
\$50,000 - \$74,999	686	17.3%	8,609	18.1%	19,121	18.6%
\$75,000 - \$99,999	799	20.1%	7,759	16.3%	16,580	16.2%
\$100,000 - \$149,999	927	23.3%	10,365	21.8%	22,660	22.1%
\$150,000 - \$199,999	265	6.7%	5,252	11.0%	12,081	11.8%
\$200,000+	169	4.3%	2,948	6.2%	7,433	7.2%
Median Household Income	\$79,028		\$81,422		\$84,403	
Average Household Income	\$93,163		\$101,998		\$107,147	
Per Capita Income	\$37,542		\$41,424		\$42,650	

2027 Households by Income	1 mile		3 mile		5 mile	
	Number	Percent	Number	Percent	Number	Percent
<\$15,000	140	3.3%	1,412	2.8%	2,722	2.5%
\$15,000 - \$24,999	162	3.8%	1,650	3.3%	3,189	2.9%
\$25,000 - \$34,999	178	4.2%	2,389	4.8%	4,102	3.8%
\$35,000 - \$49,999	384	9.0%	5,162	10.3%	10,145	9.4%
\$50,000 - \$74,999	701	16.5%	8,742	17.5%	20,051	18.5%
\$75,000 - \$99,999	879	20.6%	7,781	15.5%	17,257	15.9%
\$100,000 - \$149,999	1,214	28.5%	11,637	23.3%	25,016	23.1%
\$150,000 - \$199,999	374	8.8%	7,402	14.8%	16,178	14.9%
\$200,000+	228	5.4%	3,869	7.7%	9,680	8.9%
Median Household Income	\$89,027		\$91,682		\$94,004	
Average Household Income	\$108,397		\$117,468		\$122,251	
Per Capita Income	\$44,065		\$48,029		\$48,871	

**Data Note:** Income is expressed in current dollars.

**Source:** Esri forecasts for 2022 and 2027. U.S. Census Bureau 2010 decennial Census data converted by Esri into 2020 geography.

September 28, 2022



## Demographic and Income Comparison Profile

Grand Avenue Center  
1615 Grand Avenue Parkway Pflugerville TX 78660  
Rings: 1, 3, 5 mile radii

Latitude: 30.4555  
Longitude: -97.6590

2010 Population by Age	1 mile		3 mile		5 mile	
	Number	Percent	Number	Percent	Number	Percent
Age 0 - 4	627	7.4%	7,233	8.2%	15,767	8.0%
Age 5 - 9	695	8.2%	7,040	8.0%	15,253	7.8%
Age 10 - 14	653	7.7%	6,356	7.2%	13,938	7.1%
Age 15 - 19	590	7.0%	5,919	6.7%	12,761	6.5%
Age 20 - 24	589	6.9%	6,210	7.0%	13,830	7.0%
Age 25 - 34	1,520	17.9%	17,497	19.8%	38,415	19.6%
Age 35 - 44	1,430	16.9%	14,907	16.9%	32,536	16.6%
Age 45 - 54	1,170	13.8%	11,764	13.3%	26,403	13.4%
Age 55 - 64	672	7.9%	6,791	7.7%	16,362	8.3%
Age 65 - 74	304	3.6%	2,789	3.2%	6,679	3.4%
Age 75 - 84	154	1.8%	1,318	1.5%	3,086	1.6%
Age 85+	66	0.8%	556	0.6%	1,290	0.7%

2022 Population by Age	Number		Percent		Number		Percent	
	Number	Percent	Number	Percent	Number	Percent	Number	Percent
Age 0 - 4	676	6.5%	8,537	7.3%	18,303	7.1%	18,303	7.1%
Age 5 - 9	659	6.4%	8,431	7.2%	18,563	7.2%	18,563	7.2%
Age 10 - 14	643	6.2%	8,065	6.9%	17,846	6.9%	17,846	6.9%
Age 15 - 19	708	6.8%	7,394	6.3%	15,892	6.2%	15,892	6.2%
Age 20 - 24	848	8.2%	8,235	7.0%	17,506	6.8%	17,506	6.8%
Age 25 - 34	1,814	17.5%	20,755	17.7%	44,573	17.3%	44,573	17.3%
Age 35 - 44	1,576	15.2%	19,409	16.5%	42,812	16.6%	42,812	16.6%
Age 45 - 54	1,359	13.1%	14,808	12.6%	32,219	12.5%	32,219	12.5%
Age 55 - 64	1,105	10.7%	11,481	9.8%	25,791	10.0%	25,791	10.0%
Age 65 - 74	649	6.3%	6,701	5.7%	15,576	6.1%	15,576	6.1%
Age 75 - 84	259	2.5%	2,603	2.2%	6,083	2.4%	6,083	2.4%
Age 85+	79	0.8%	930	0.8%	2,126	0.8%	2,126	0.8%

2027 Population by Age	Number		Percent		Number		Percent	
	Number	Percent	Number	Percent	Number	Percent	Number	Percent
Age 0 - 4	754	6.8%	9,181	7.5%	19,815	7.3%	19,815	7.3%
Age 5 - 9	711	6.4%	8,689	7.1%	19,217	7.1%	19,217	7.1%
Age 10 - 14	680	6.2%	8,295	6.8%	18,528	6.8%	18,528	6.8%
Age 15 - 19	630	5.7%	7,322	6.0%	16,307	6.0%	16,307	6.0%
Age 20 - 24	919	8.3%	8,932	7.3%	19,101	7.1%	19,101	7.1%
Age 25 - 34	2,145	19.4%	23,309	19.0%	49,100	18.1%	49,100	18.1%
Age 35 - 44	1,615	14.6%	19,056	15.6%	42,732	15.8%	42,732	15.8%
Age 45 - 54	1,359	12.3%	14,837	12.1%	33,269	12.3%	33,269	12.3%
Age 55 - 64	1,073	9.7%	11,044	9.0%	24,763	9.2%	24,763	9.2%
Age 65 - 74	742	6.7%	7,425	6.1%	17,475	6.5%	17,475	6.5%
Age 75 - 84	326	3.0%	3,301	2.7%	7,903	2.9%	7,903	2.9%
Age 85+	85	0.8%	1,034	0.8%	2,387	0.9%	2,387	0.9%

Source: Esri forecasts for 2022 and 2027. U.S. Census Bureau 2010 decennial Census data converted by Esri into 2020 geography.

September 28, 2022



## Demographic and Income Comparison Profile

Grand Avenue Center  
1615 Grand Avenue Parkway Pflugerville TX 78660  
Rings: 1, 3, 5 mile radii

Latitude: 30.4555  
Longitude: -97.6590

2010 Race and Ethnicity	1 mile		3 mile		5 mile	
	Number	Percent	Number	Percent	Number	Percent
White Alone	4,854	57.3%	52,043	58.9%	123,476	62.9%
Black Alone	1,351	15.9%	13,638	15.4%	25,414	12.9%
American Indian Alone	71	0.8%	627	0.7%	1,435	0.7%
Asian Alone	606	7.2%	8,636	9.8%	17,448	8.9%
Pacific Islander Alone	7	0.1%	108	0.1%	223	0.1%
Some Other Race Alone	1,219	14.4%	9,836	11.1%	20,749	10.6%
Two or More Races	364	4.3%	3,493	4.0%	7,573	3.9%
Hispanic Origin (Any Race)	2,981	35.2%	27,176	30.7%	58,559	29.8%

2020 Race and Ethnicity	1 mile		3 mile		5 mile	
	Number	Percent	Number	Percent	Number	Percent
White Alone	3,892	40.1%	47,864	43.0%	114,092	46.2%
Black Alone	1,672	17.2%	17,432	15.7%	32,628	13.2%
American Indian Alone	113	1.2%	1,116	1.0%	2,475	1.0%
Asian Alone	646	6.6%	11,771	10.6%	25,811	10.4%
Pacific Islander Alone	20	0.2%	160	0.1%	322	0.1%
Some Other Race Alone	1,603	16.5%	13,522	12.2%	29,242	11.8%
Two or More Races	1,770	18.2%	19,365	17.4%	42,509	17.2%
Hispanic Origin (Any Race)	4,005	41.2%	37,948	34.1%	81,851	33.1%

2022 Race and Ethnicity	1 mile		3 mile		5 mile	
	Number	Percent	Number	Percent	Number	Percent
White Alone	4,096	39.5%	49,550	42.2%	116,263	45.2%
Black Alone	1,753	16.9%	18,018	15.4%	33,676	13.1%
American Indian Alone	120	1.2%	1,186	1.0%	2,620	1.0%
Asian Alone	708	6.8%	12,674	10.8%	27,606	10.7%
Pacific Islander Alone	22	0.2%	166	0.1%	340	0.1%
Some Other Race Alone	1,705	16.4%	14,565	12.4%	31,173	12.1%
Two or More Races	1,972	19.0%	21,189	18.1%	45,613	17.7%
Hispanic Origin (Any Race)	4,303	41.5%	40,719	34.7%	86,648	33.7%

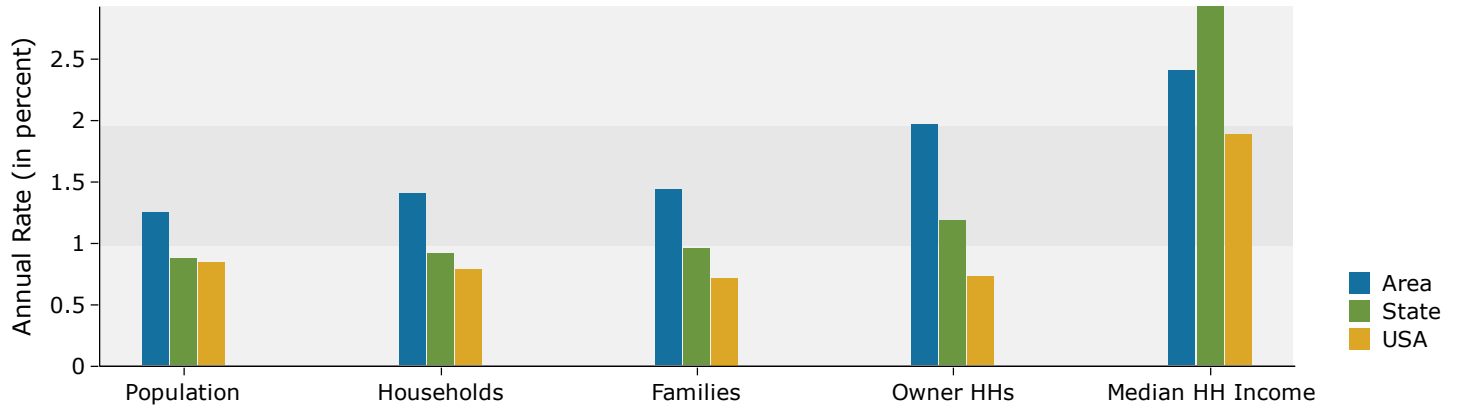
2027 Race and Ethnicity	1 mile		3 mile		5 mile	
	Number	Percent	Number	Percent	Number	Percent
White Alone	4,150	37.6%	49,372	40.3%	116,702	43.1%
Black Alone	1,860	16.8%	18,661	15.2%	35,206	13.0%
American Indian Alone	130	1.2%	1,272	1.0%	2,889	1.1%
Asian Alone	786	7.1%	13,746	11.2%	30,049	11.1%
Pacific Islander Alone	23	0.2%	175	0.1%	363	0.1%
Some Other Race Alone	1,810	16.4%	15,505	12.7%	34,298	12.7%
Two or More Races	2,280	20.7%	23,692	19.4%	51,089	18.9%
Hispanic Origin (Any Race)	4,597	41.6%	42,913	35.1%	93,045	34.4%

Source: Esri forecasts for 2022 and 2027. U.S. Census Bureau 2010 decennial Census data converted by Esri into 2020 geography.

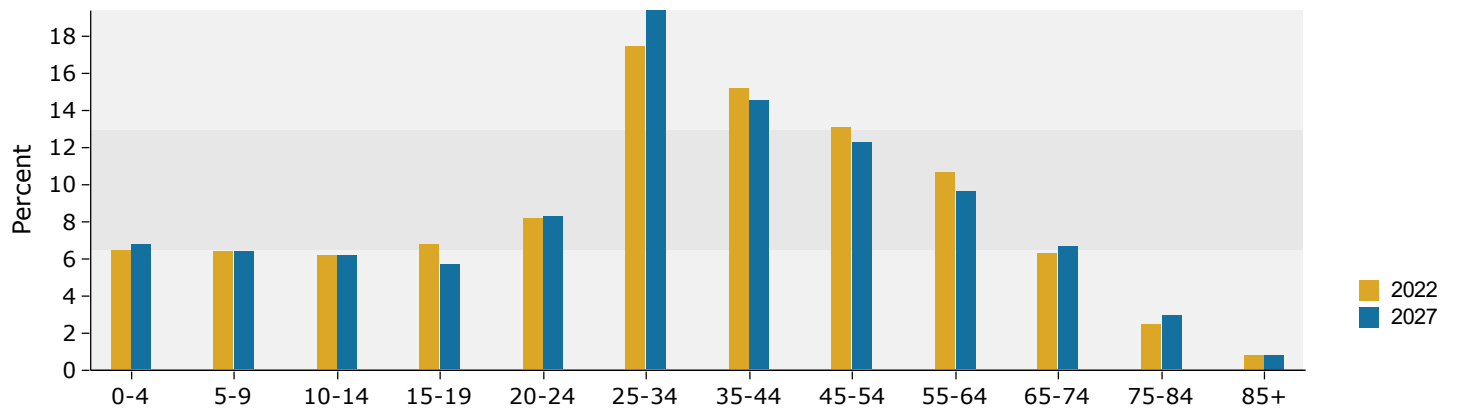
September 28, 2022

## 1 mile

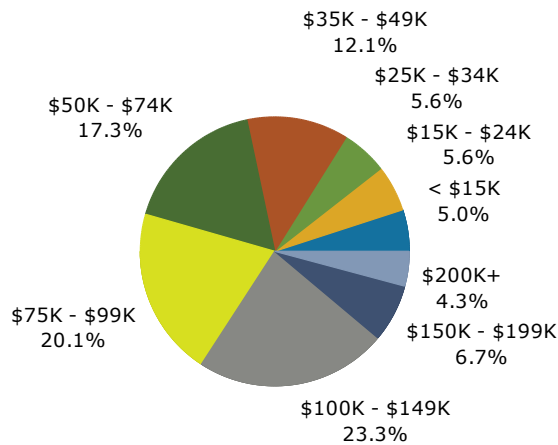
### Trends 2022-2027



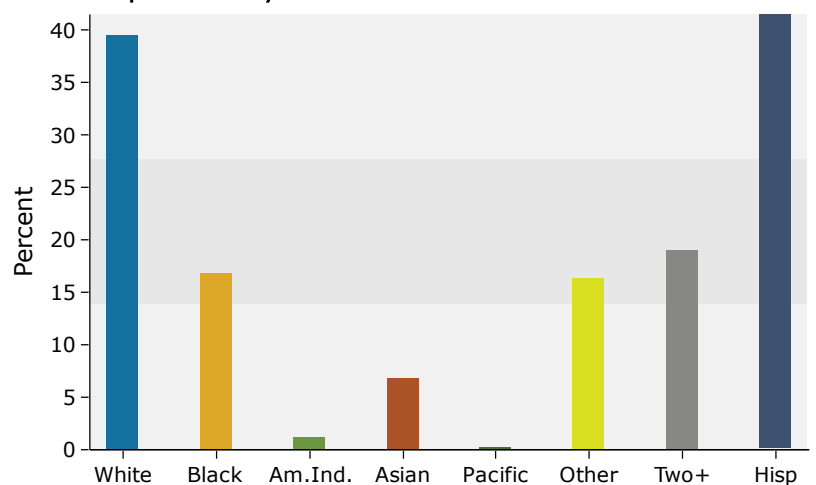
### Population by Age



### 2022 Household Income

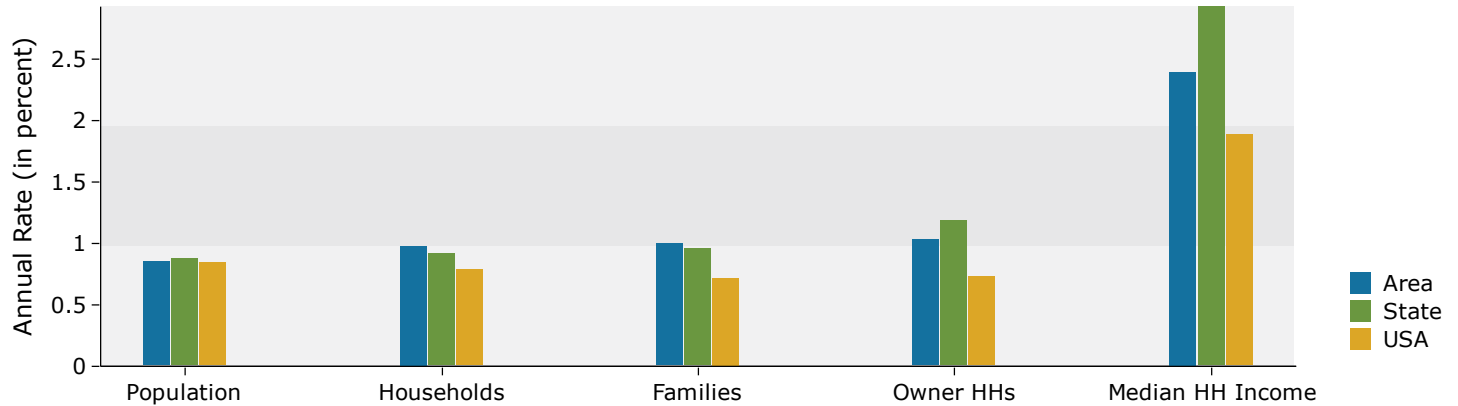


### 2022 Population by Race

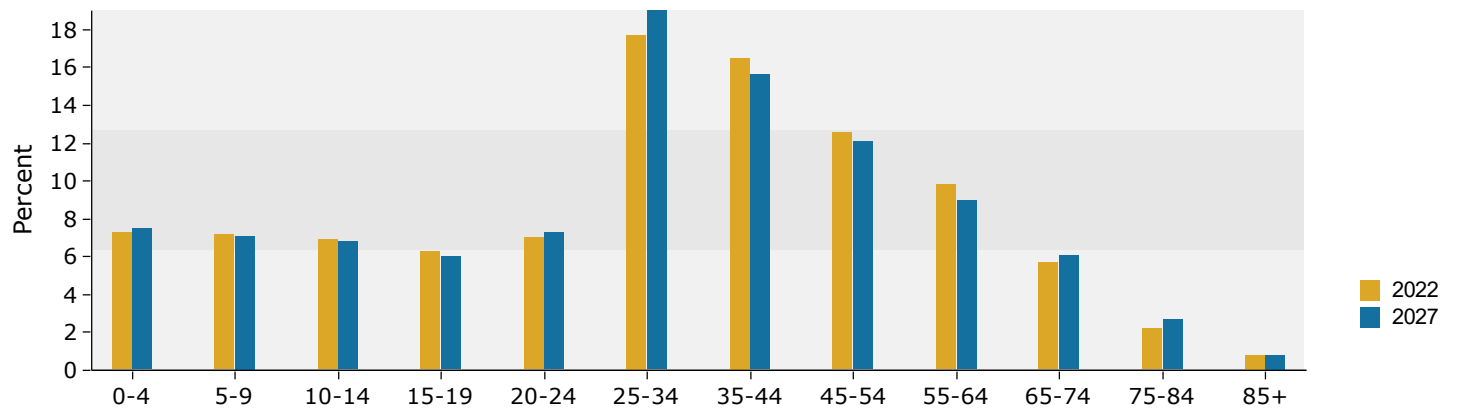


## 3 mile

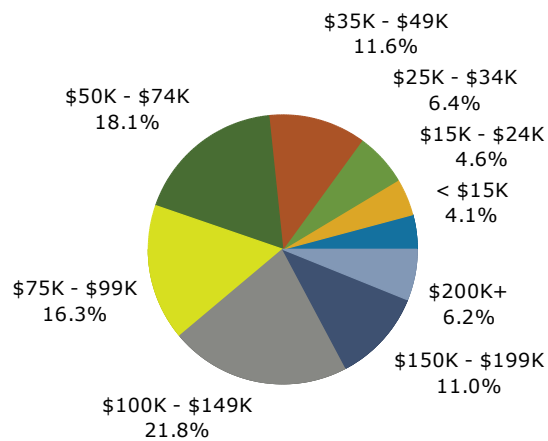
### Trends 2022-2027



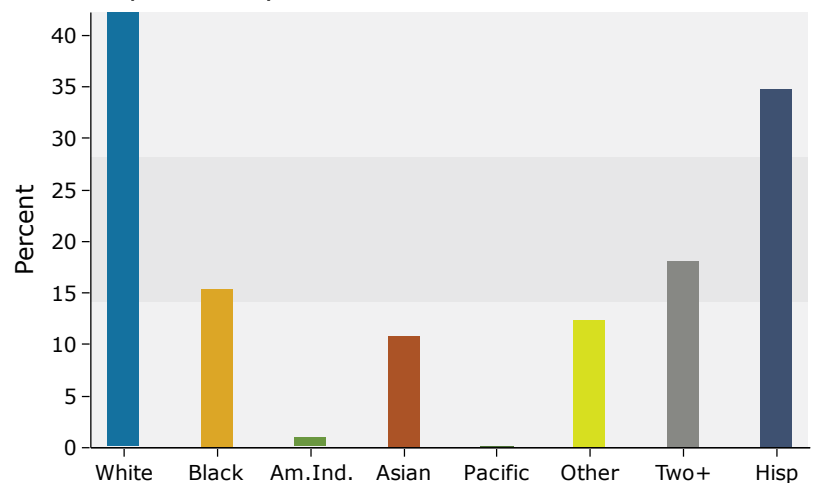
### Population by Age



### 2022 Household Income

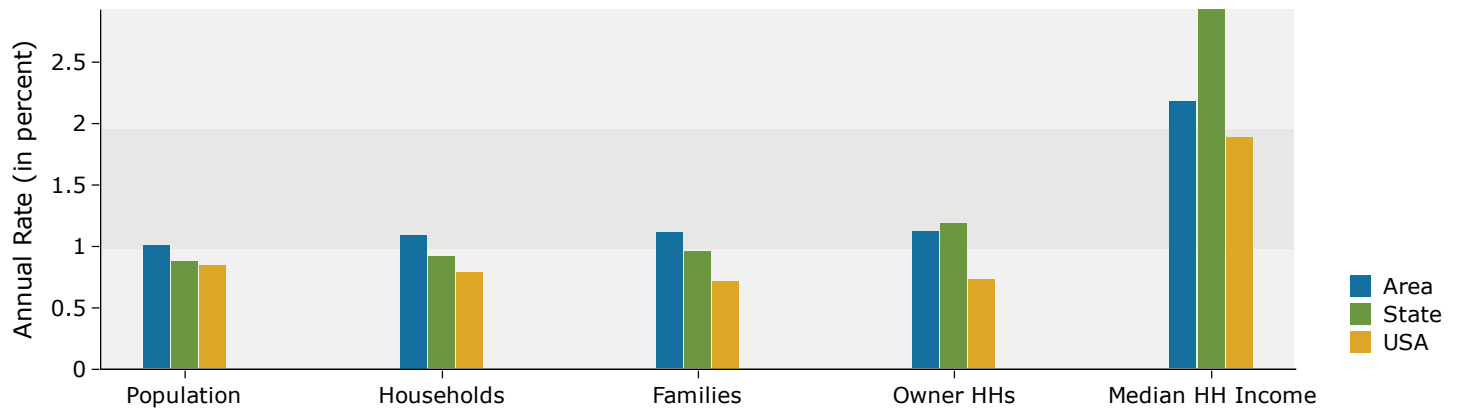


### 2022 Population by Race

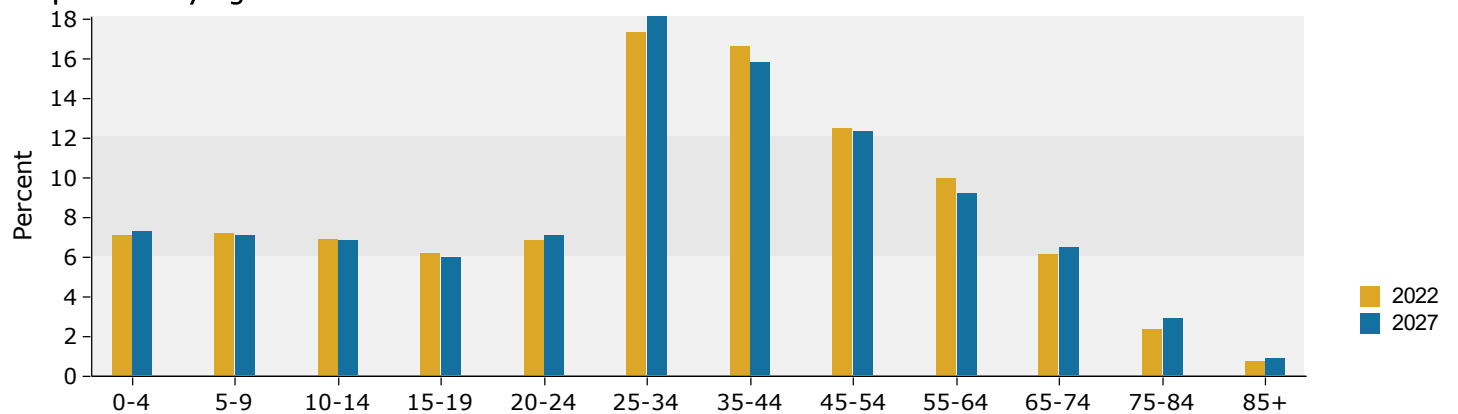


## 5 mile

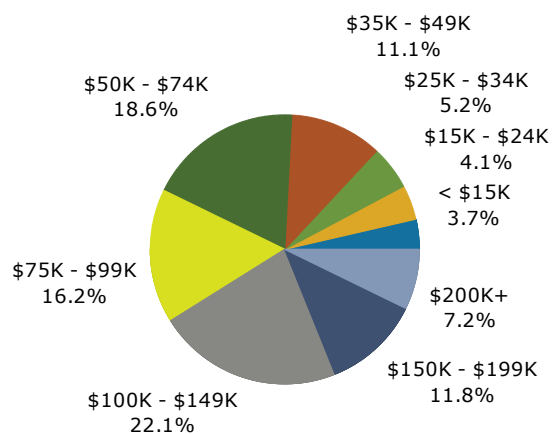
### Trends 2022-2027



### Population by Age



### 2022 Household Income



### 2022 Population by Race

