

PRIME LITTLE TOKYO OFFICE/RETAIL SPACE FOR LEASE

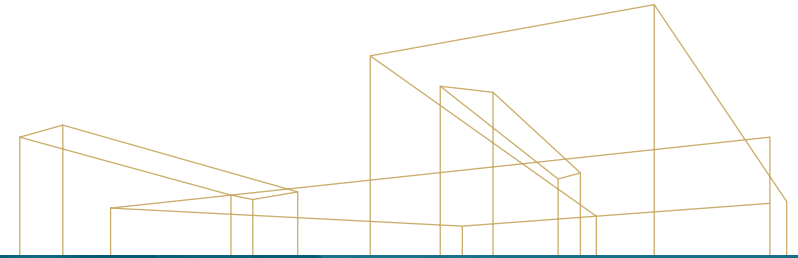
340 EAST 2ND STREET



340 E 2ND ST, LOS ANGELES, CA 90012

 **Kidder
Mathews**

340 EAST 2ND STREET LOS ANGELES, CA 90012



Located in the heart of Little Tokyo, 340 E 2nd Street is surrounded by many walking amenities.



SPEC SUITES AVAILABLE FOR IMMEDIATE OCCUPANCY



44,351 SF CLASS A OFFICE BUILDING



ADJACENT PARKING



ACCESSIBLE TO PUBLIC TRANSIT



SOUGHT AFTER LITTLE TOKYO LOCATION



LOCATED ACROSS THE STREET FROM WELL-KNOWN JAPANESE VILLAGE PLAZA

JOHN ANTHONY, SIOR
213.225.7218
john.anthony@kidder.com
LIC N° 01226464

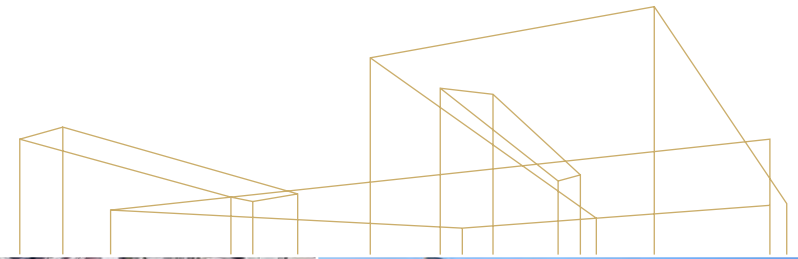
CHRISTOPHER STECK, CCIM
213.225.7231
christopher.steck@kidder.com
LIC N° 01841338

KIDDER.COM

This information supplied herein is from sources we deem reliable. It is provided without any representation, warranty, or guarantee, expressed or implied as to its accuracy. Prospective Buyer or Tenant should conduct an independent investigation and verification of all matters deemed to be material, including, but not limited to, statements of income and expenses. Consult your attorney, accountant, or other professional advisor.



340 EAST 2ND STREET LOS ANGELES, CA 90012



AVAILABILITIES

Floor	Suite	Use	Available SF	Rent
3rd	302	Office	1,731 SF	\$2.75/SF
4th	401*	Office	657 SF	\$2.75/SF
4th	403*	Office	510 SF	\$2.75/SF



*CONTIGUOUS SPACE

JOHN ANTHONY, SIOR
213.225.7218
john.anthony@kidder.com
LIC N° 01226464

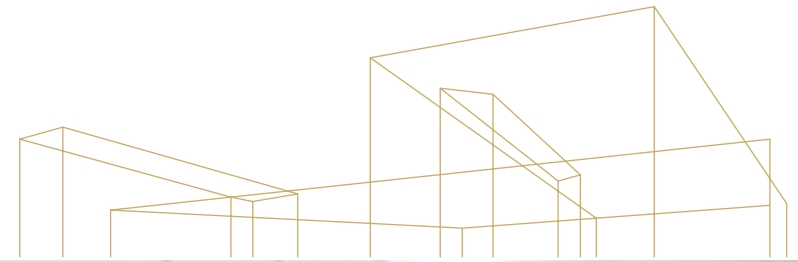
CHRISTOPHER STECK, CCIM
213.225.7231
christopher.steck@kidder.com
LIC N° 01841338

KIDDER.COM

This information supplied herein is from sources we deem reliable. It is provided without any representation, warranty, or guarantee, expressed or implied as to its accuracy. Prospective Buyer or Tenant should conduct an independent investigation and verification of all matters deemed to be material, including, but not limited to, statements of income and expenses. Consult your attorney, accountant, or other professional advisor.



340 EAST 2ND STREET LOS ANGELES, CA 90012



JOHN ANTHONY, SIOR
213.225.7218
john.anthony@kidder.com
LIC N° 01226464

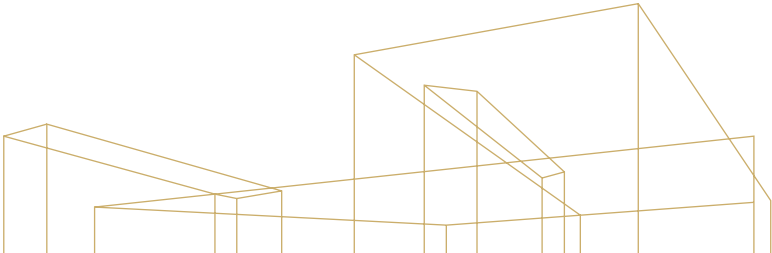
CHRISTOPHER STECK, CCIM
213.225.7231
christopher.steck@kidder.com
LIC N° 01841338

KIDDER.COM

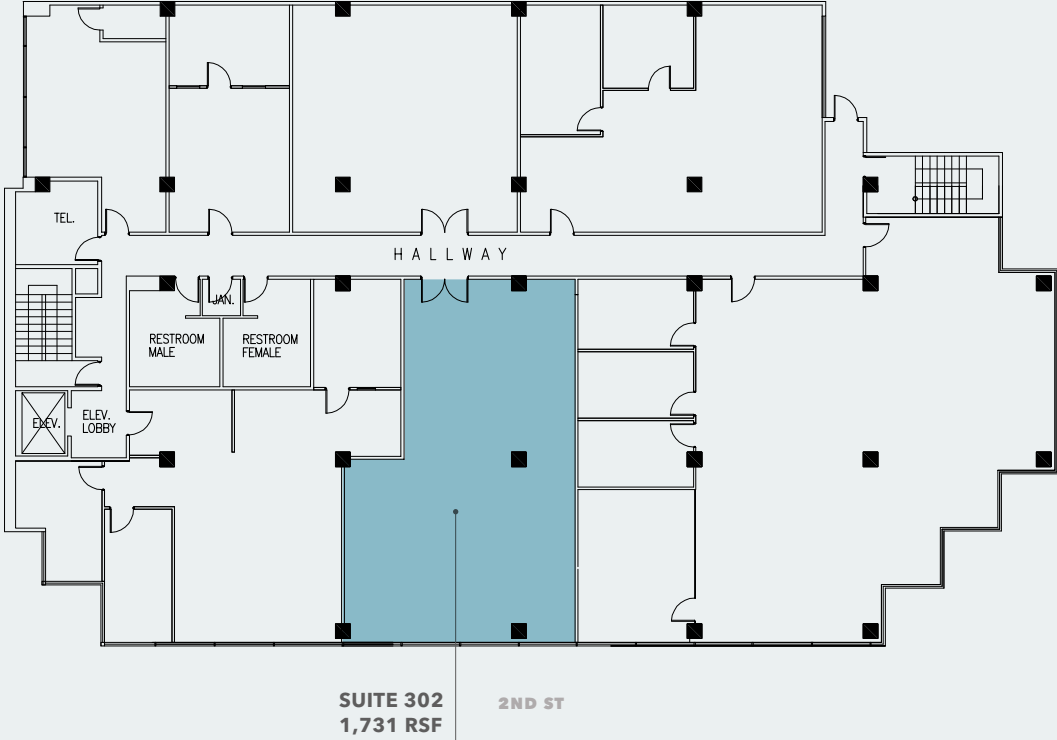
This information supplied herein is from sources we deem reliable. It is provided without any representation, warranty, or guarantee, expressed or implied as to its accuracy. Prospective Buyer or Tenant should conduct an independent investigation and verification of all matters deemed to be material, including, but not limited to, statements of income and expenses. Consult your attorney, accountant, or other professional advisor.



340 EAST 2ND STREET LOS ANGELES, CA 90012



5 STORY CARPARK



3RD FLOOR

1,731 SF

SUITE 302

JOHN ANTHONY, SIOR
213.225.7218
john.anthony@kidder.com

LIC N° 01226464

CHRISTOPHER STECK, CCIM
213.225.7231
christopher.steck@kidder.com

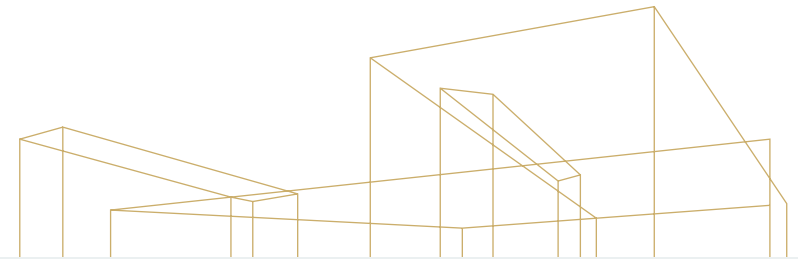
LIC N° 01841338

KIDDER.COM

This information supplied herein is from sources we deem reliable. It is provided without any representation, warranty, or guarantee, expressed or implied as to its accuracy. Prospective Buyer or Tenant should conduct an independent investigation and verification of all matters deemed to be material, including, but not limited to, statements of income and expenses. Consult your attorney, accountant, or other professional advisor.



340 EAST 2ND STREET LOS ANGELES, CA 90012



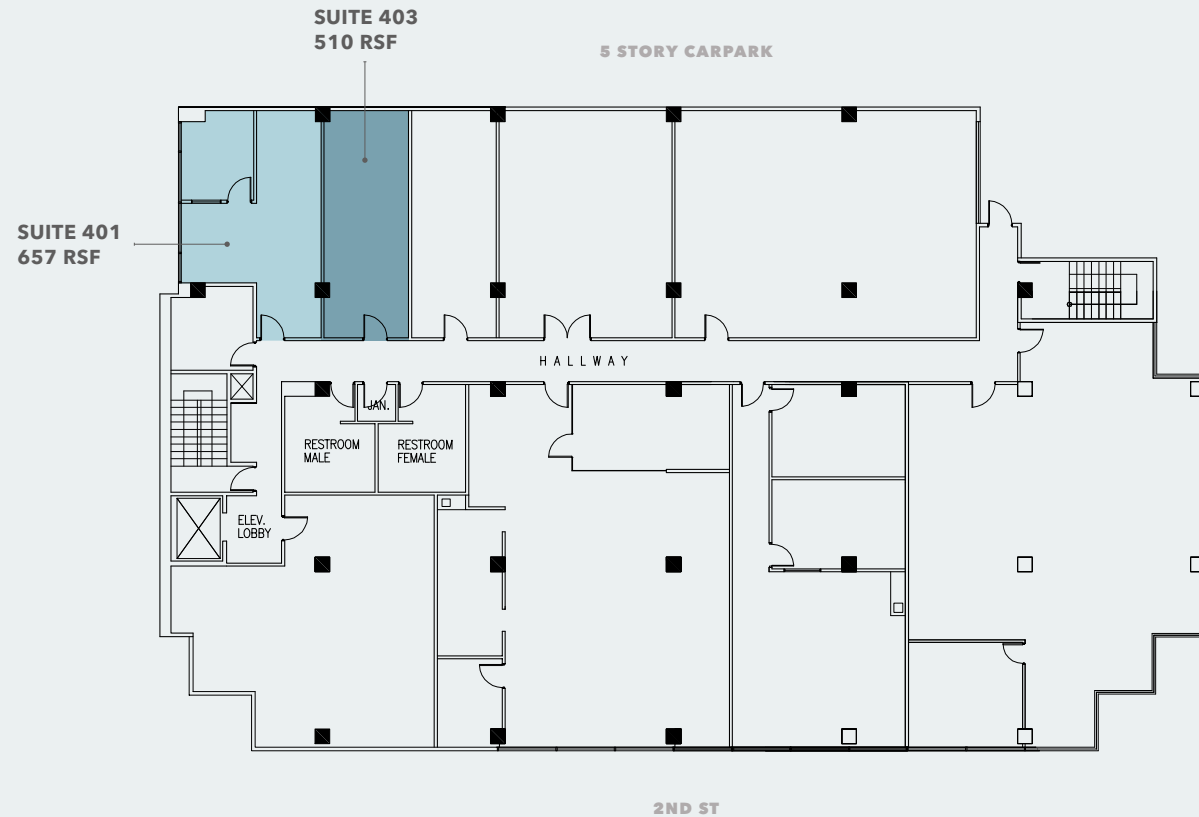
4TH FLOOR

657 SF

SUITE 401

510 SF

SUITE 403



JOHN ANTHONY, SIOR
213.225.7218
john.anthony@kidder.com

LIC N° 01226464

CHRISTOPHER STECK, CCIM
213.225.7231
christopher.steck@kidder.com

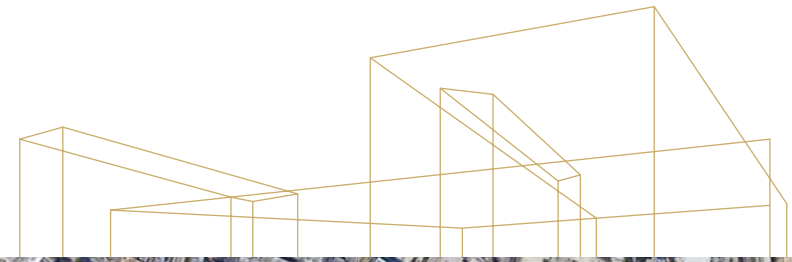
LIC N° 01841338

KIDDER.COM

This information supplied herein is from sources we deem reliable. It is provided without any representation, warranty, or guarantee, expressed or implied as to its accuracy. Prospective Buyer or Tenant should conduct an independent investigation and verification of all matters deemed to be material, including, but not limited to, statements of income and expenses. Consult your attorney, accountant, or other professional advisor.



340 EAST 2ND STREET LOS ANGELES, CA 90012



FIGAT7TH
 Nordstrom Rack, Sephora, Sunglass Hut, Target, ZARA, California Pizza Kitchen, CoCo Fresh Tea & Juice, Five Guys, George's Greek Grill, Mendocino Farms, Morton's The Steakhouse, New Moon Café, Starbucks, Salata, The Melt, Gold's Gym, LensCrafters, T-Mobile

LA LIVE
 Ritz-Carlton, JW Marriott, Yard House, Grammy Museum, Wolfgang Puck, Starbucks, Regal, Lucky Strike, Fleming's, Rock'N Fish, Katsuya, Smashburger, Tom's Watch Bar, Patxi's Pizza

CRYPTO.COM ARENA

LA CONVENTION CENTER

ORPHEUM THEATRE

SUBJECT PROPERTY

This information supplied herein is from sources we deem reliable. It is provided without any representation, warranty, or guarantee, expressed or implied as to its accuracy. Prospective Buyer or Tenant should conduct an independent investigation and verification of all matters deemed to be material, including, but not limited to, statements of income and expenses. Consult your attorney, accountant, or other professional advisor.



For leasing information contact

JOHN ANTHONY, SIOR
213.225.7218
john.anthony@kidder.com
LIC N° 01226464

CHRISTOPHER STECK, CCIM
213.225.7231
christopher.steck@kidder.com
LIC N° 01841338

KIDDER.COM

This information supplied herein is from sources we deem reliable. It is provided without any representation, warranty, or guarantee, expressed or implied as to its accuracy. Prospective Buyer or Tenant should conduct an independent investigation and verification of all matters deemed to be material, including, but not limited to, statements of income and expenses. Consult your attorney, accountant, or other professional advisor.