



Washington Adventist Medical Center

7610 Carroll Ave, Takoma Park, MD 20912



Mohankumar Arumugham

MM INFINITY REALTY LLC
9911 Georgia Ave, Silver Spring, MD 20902
mminfinityrealty@gmail.com
(202) 203-0668



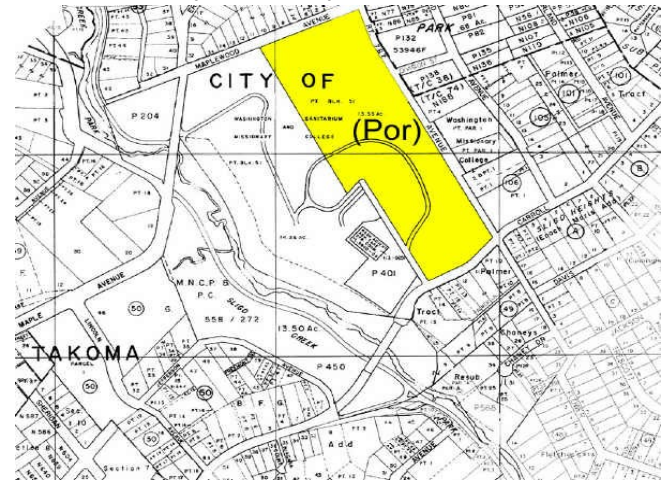
Washington Adventist Medical Center

\$38.00 /SF/YR

Prime Medical Office Condo for Rent – Takoma Park, MD 20912- Size: 795 sq. ft. | Type: Medical/Therapy Office | Floor: 3rd Floor (Elevator Access)Ready to move in and start seeing patients immediately! This well-maintained turn-key medical office condo offers a professional, welcoming, and highly functional space in one of Takoma Park’s most desirable medical and educational districts. Ideal for physicians, dentists, therapists, or other healthcare providers seeking a strategic location with built-in patient convenience.

Key Features & Layout? Spacious Waiting Area – Comfortable and inviting for patients. Functional Reception Desk – Optimized for smooth check-ins and administrative workflow. Large Private Office – Oversized window with serene...

- Located near public transportation.



Rental Rate:	\$38.00 /SF/YR
Property Type:	Office
Property Subtype:	Medical
Building Class:	B
Rentable Building Area:	48,000 SF
Year Built:	1970
Walk Score ®:	36 (Car-Dependent)
Transit Score ®:	54 (Good Transit)
Rental Rate Mo:	\$3.17 /SF/MO

3rd Floor Ste 340

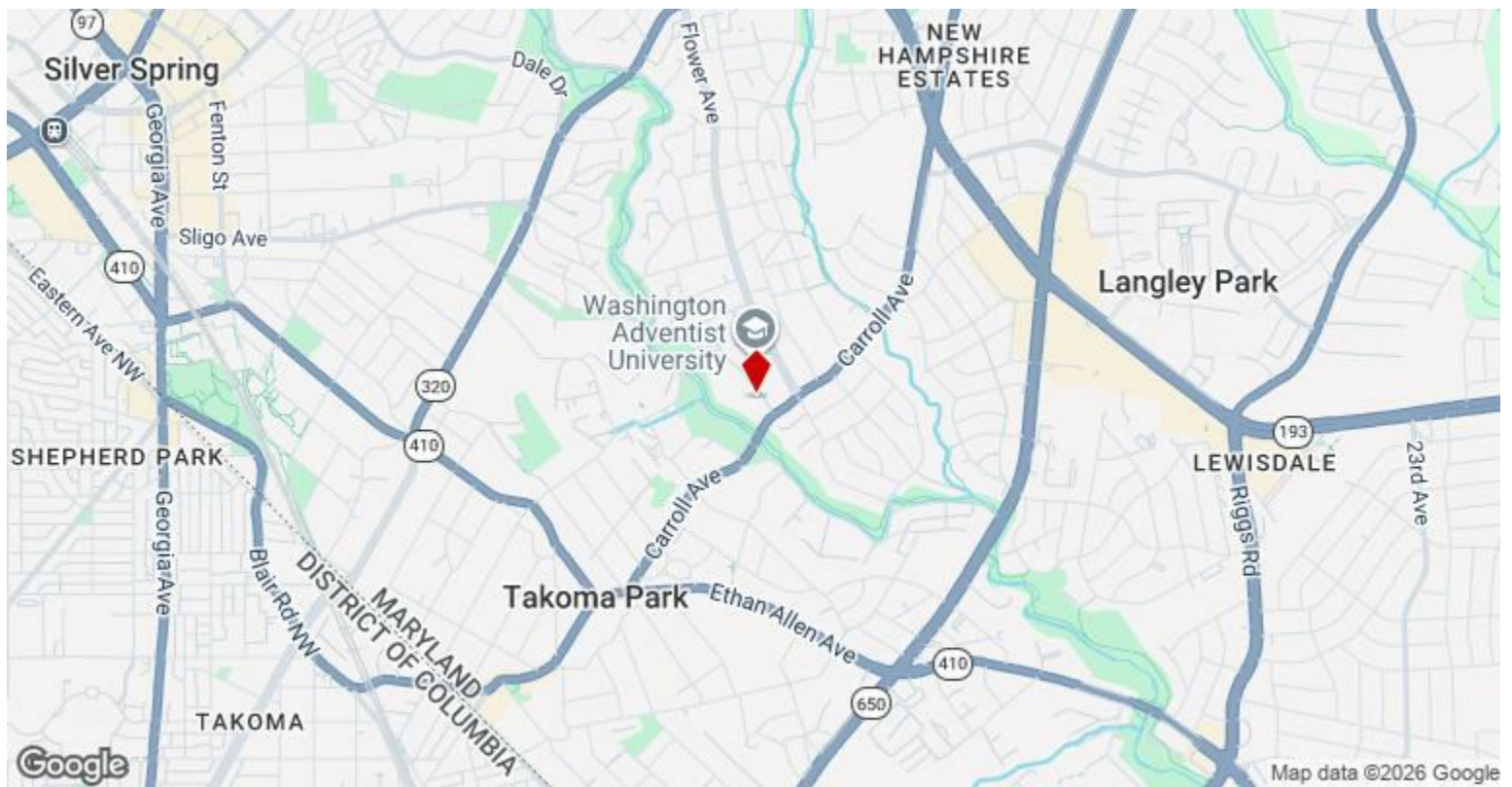
1

Space Available	795 SF
Rental Rate	\$38.00 /SF/YR
Date Available	Now
Service Type	[object Object]
Built Out As	Standard Medical
Space Type	Relet
Space Use	Office/Medical
Lease Term	Negotiable

Move in ready medical office space. 2 fully equipped exam rooms included in this space.

Major Tenant Information

Tenant	SF Occupied	Lease Expired
Adventist HealthCare Diabetes Education Program	-	
Dr. Anees Ashan	-	
Dr. Jane M. Lingelbach	-	
Dr. Lawrence H. Siu	-	
Healing Practice Counseling, INC	-	
Paramount Dental Care	-	
Park Pediatrics	-	
Progressive Feet	-	
Washington Nephrology Associates	-	
Washington Vascular Specialists	-	



7610 Carroll Ave, Takoma Park, MD 20912

Prime Medical Office Condo for Rent – Takoma Park, MD 20912 -Size: 795 sq. ft. | Type: Medical/Therapy Office | Floor: 3rd Floor (Elevator Access)Ready to move in and start seeing patients immediately! This well-maintained turn-key medical office condo offers a professional, welcoming, and highly functional space in one of Takoma Park's most desirable medical and educational districts. Ideal for physicians, dentists, therapists, or other healthcare providers seeking a strategic location with built-in patient convenience. Key Features & Layout- Spacious Waiting Area – Comfortable and inviting for patients. Functional Reception Desk – Optimized for smooth check-ins and administrative workflow.? Large Private Office – Oversized window with serene views of Washington Adventist University's green campus.- Two Exam/Treatment Rooms – Well-appointed, bright, and ready for immediate use.- Additional Flex Room – Ideal for storage, consultation, or therapy use. Direct Elevator Access – Located right in front of the elevator for maximum accessibility. Parking & Accessibility? 150+ Onsite Parking Spaces plus nearby county parking lots. Steps away from hole Foods and other retail conveniences for patients and staff.? Unbeatable transportation 7 miles to Downtown Washington, D.C. Easy reach to Rockville (15 MILES. Location Advantages- Adjacent to Washington Adventist University and just steps from the former Washington Adventist Hospital site. Surrounded by other professional and healthcare offices, creating natural referral opportunities. Safe, attractive, and professionally managed 48,000 sq. ft. building built for medical and office use. Why Choose This Office. Turn-key condition – No costly build-out needed. Prestigious address with excellent visibility and credibility for your practice.? Ideal for medical, dental, mental health, physical therapy, or other healthcare specialties. Move in today and start seeing patients tomorrow. Schedule Your Tour. Don't miss this rare chance to secure a prime medical office space in Takoma Park's thriving professional hub. Contact Mohan Kumar or Jags to arrange a private showing. Mohan Kumar - (202) 203-0668 / monku28@gmail.com Jags - 703 828 5245 / jags_bp@yahoo.com

Property Photos



Property Photos



Interior Photo



Interior Photo

Property Photos



Interior Photo



Interior Photo

Property Photos



Interior Photo



Interior Photo

Property Photos



Interior Photo



Building Photo

Property Photos



Building Photo



Interior Photo

Property Photos



Primary Photo



Interior Photo

Property Photos



Primary Photo



Interior Photo

Property Photos



Building Photo



Interior Photo

Property Photos



Interior Photo



Building Photo

Property Photos



Building Photo