

## New Construction Warehouse Condos

EXCLUSIVELY OFFERED BY  
WILSON HUTCHISON REALTY, LLC



WILSON HUTCHISON  
REALTY, LLC

**5720 & 5724 North  
Commerce Court  
Alpharetta, GA 30004  
13 New Construction  
Spaces  
Warehouse/Workshop  
April 2021 Delivery**



**\*Artistic rendering\***



**Tom Wilson  
404-372-5547 – Cell  
Or  
770-242-7917 x 1**

**Industrial / Personal Use • Warehouse / Manufacturing / Hobby**

The information has been secured from sources we believe to be reliable, but we make no representations or warranties, expressed or implied, as to the accuracy of the information.

**5755 North Point Parkway, Suite 44, Alpharetta, GA 30022 Tel: 770-242-7917 Fax: 678-325-4824 | [www.wilsonhutch.com](http://www.wilsonhutch.com)**



## New Construction Warehouse Condos

EXCLUSIVELY OFFERED BY  
WILSON HUTCHISON REALTY, LLC



New mixed use project  
zoned M1 Located in  
Highland Ridge  
Commercial Park off of  
Atlanta Highway just  
north of Francis Rd  
minutes from Route 400



Vicinity Map

Tom Wilson  
404-372-5547 – Cell  
Or  
770-242-7917 x 1

The information has been secured from sources we believe to be reliable, but we make no representations or warranties, expressed or implied, as to the accuracy of the information.

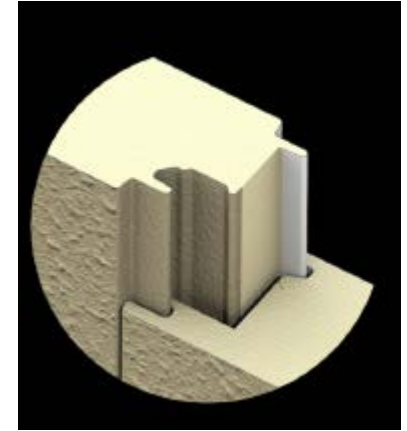
5755 North Point Parkway, Suite 44, Alpharetta, GA 30022 Tel: 770-242-7917 Fax: 678-325-4824 | [www.wilsonhutch.com](http://www.wilsonhutch.com)

**5720 & 5724 North Commerce Court  
Alpharetta, GA 30005  
Forsyth County**

**EXCLUSIVELY OFFERED BY  
WILSON HUTCHISON REALTY, LLC**



- **Each Unit is 1,250 square feet (25' wide by 50' deep)**
- **Variable ceiling heights at 18' / 19' 4" / 20' 8" / 22' at front wall**
- **Customize your space**
- **Tall ceilings for lofts, shelves and lifts**
- **Multiple units may be combined**
- **14' tall insulated doors**
- **Large isles and common parking**
- **3 phase power**
- **HVAC at each Unit**
- **Half bath in each with hot water heater**
- **All Units sprinkled**
- **Superior steel construction and insulation using Metl-Span 2" thick Tuff Wall (example pictured)**



**Tom Wilson  
404-372-5547 – Cell  
Or  
770-242-7917 x 1**

The information has been secured from sources we believe to be reliable, but we make no representations or warranties, expressed or implied, as to the accuracy of the information.

**5755 North Point Parkway, Suite 44, Alpharetta, GA 30022 Tel: 770-242-7917 Fax: 678-325-4824 | [www.wilsonhutch.com](http://www.wilsonhutch.com)**



# 5720 & 5724 North Commerce Court Alpharetta, GA 30005 Forsyth County

EXCLUSIVELY OFFERED BY  
WILSON HUTCHISON REALTY, LLC



WILSON HUTCHISON  
REALTY, LLC



The information has been secured from sources we believe to be reliable, but we make no representations or warranties, expressed or implied, as to the accuracy of the information.

5755 North Point Parkway, Suite 44, Alpharetta, GA 30022 Tel: 770-242-7917 Fax: 678-325-4824 | [www.wilsonhutch.com](http://www.wilsonhutch.com)

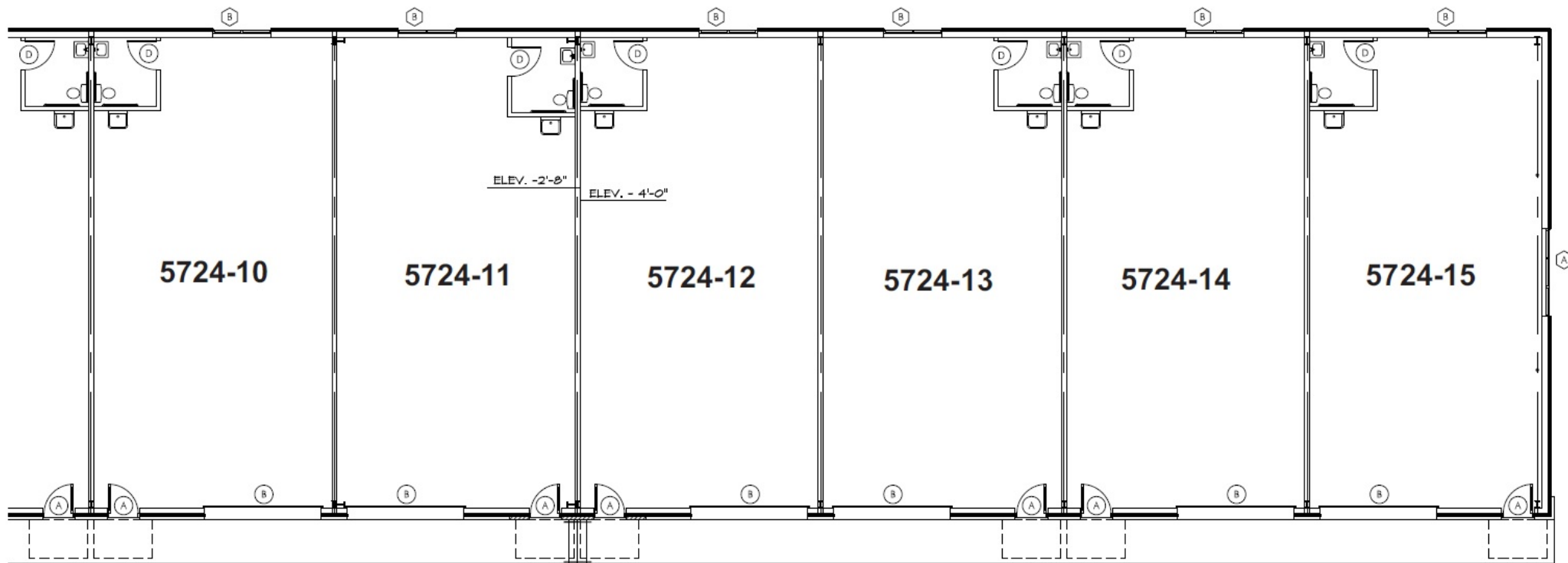
**5720 & 5724 North Commerce Court  
Alpharetta, GA 30005  
Forsyth County**

**EXCLUSIVELY OFFERED BY  
WILSON HUTCHISON REALTY, LLC**



**WILSON HUTCHISON  
REALTY, LLC**

## **Partial Floorplan**



The information has been secured from sources we believe to be reliable, but we make no representations or warranties, expressed or implied, as to the accuracy of the information.

**5755 North Point Parkway, Suite 44, Alpharetta, GA 30022 Tel: 770-242-7917 Fax: 678-325-4824 | [www.wilsonhutch.com](http://www.wilsonhutch.com)**