



FLEX SPACE FOR LEASE 1,500 SF

2503 58th Street
Hampton, Virginia 23661

ELLIS COLTHORPE
Senior Associate
757 818 4307
ellis.colthorpe@thalhimer.com

Newport News Office
One BayPort Way, Suite 100
Newport News, Virginia 23606
757 873 2900 | Thalhimer.com



INCUBATOR BUSINESS SUITES

HAMPTON, VIRGINIA 23661

Available Suite:	Suite B	Suite D
Availability:	February 1 st , 2025	December 1 st , 2024
Suite Size:	± 1,500 SF	± 1,500 SF
Office Space:	750 SF	750 SF
Warehouse Space:	750 SF	750 SF (Conditioned)
Grade-level Loading:	12' (w) x 10' (h)	12' (w) x 10' (h)
Ceiling Height:	12.5'	12.5'
LEASE RATE	\$1,750.00 / mo. Mod Gross	\$1,750.00 / mo. Mod Gross

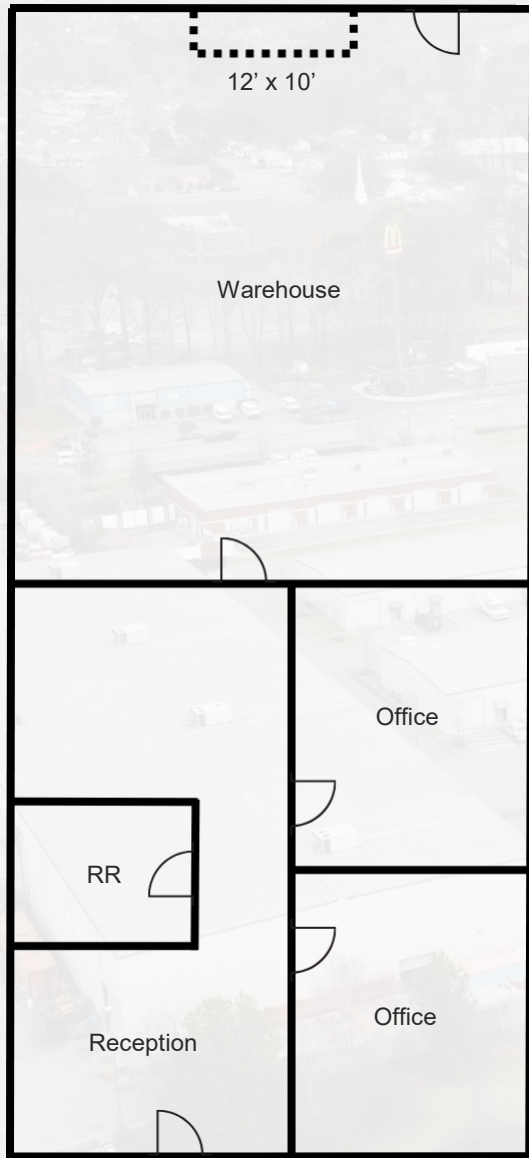
All Suites:

Zoning: M-3, Heavy Industrial

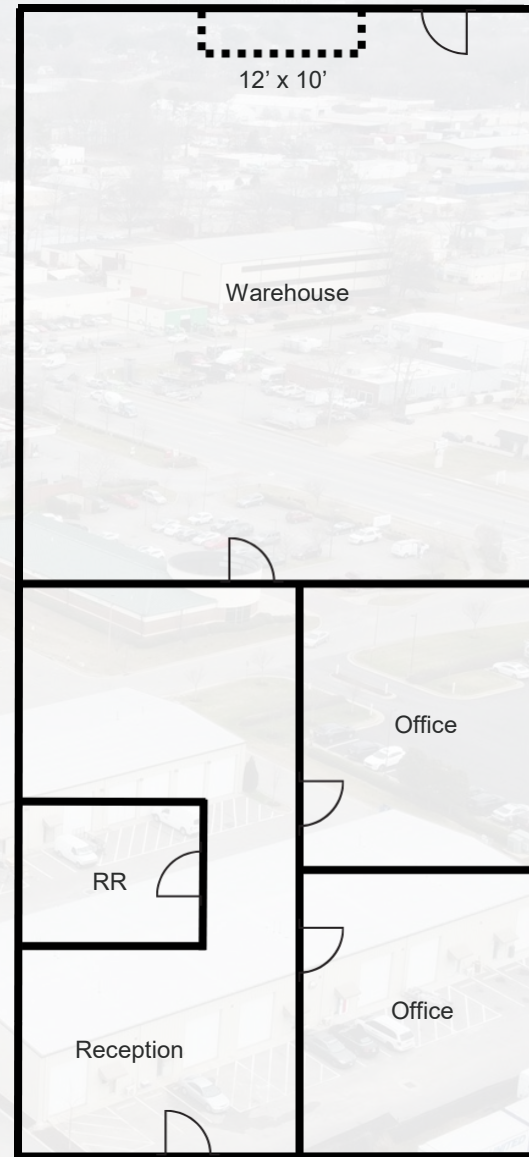
Tenant Responsible for Electric and Telecom

Landlord Responsible for Water | Sewer and Dumpster Service

FLOORPLANS



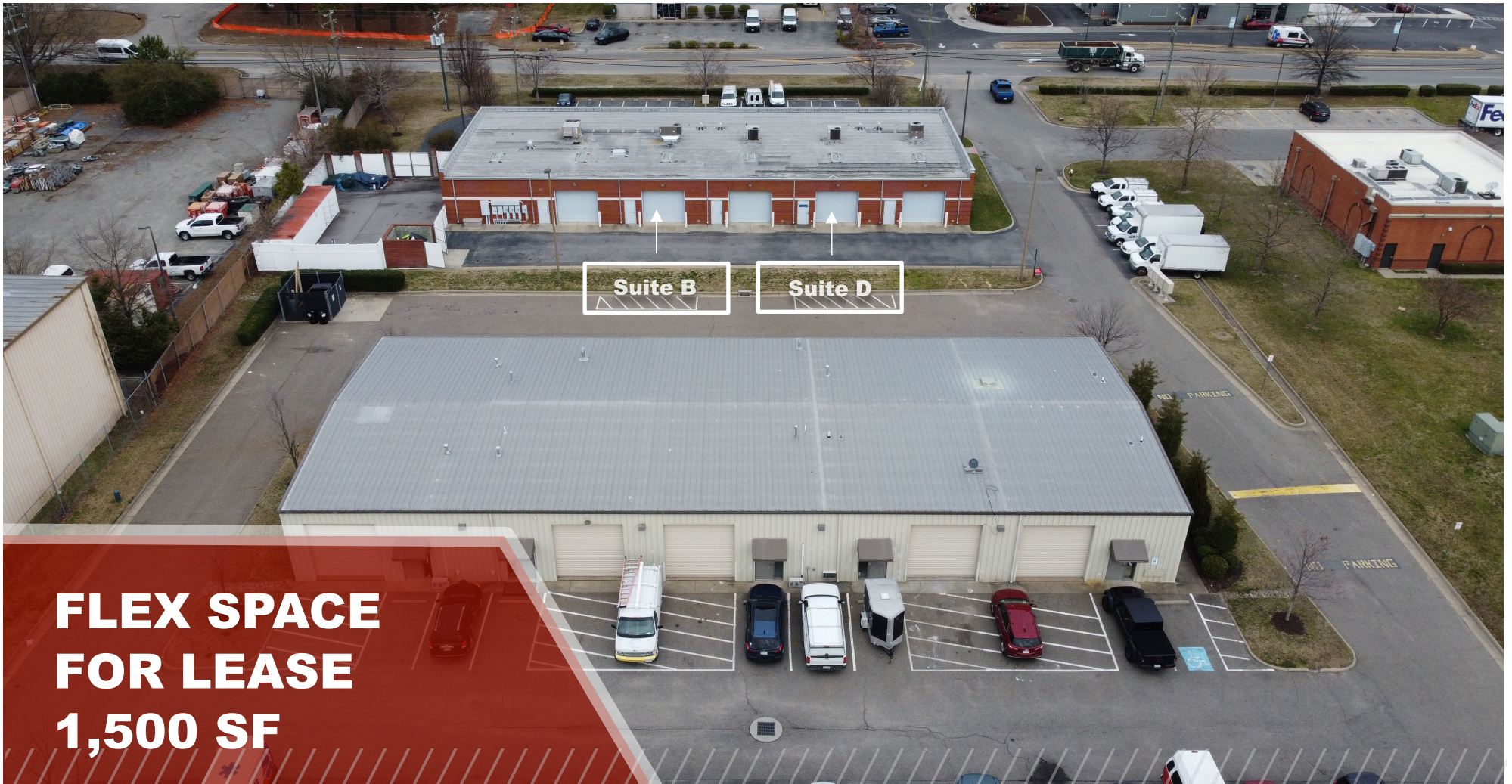
2503 58th Suite B
1,500 SF



2503 58th Suite D
1,500 SF

2503 58th Street Suite D





FLEX SPACE FOR LEASE 1,500 SF

2503 58th Street
Hampton, Virginia 23661

ELLIS COLTHORPE
Senior Associate
757 818 4307
ellis.colthorpe@thalhimer.com

Newport News Office
One BayPort Way, Suite 100
Newport News, Virginia 23606
757 873 2900 | Thalhimer.com

