



Under Development

SITE

View Online

colliers.com/memphis





19.11± Acres (Divisible) - Armory Site for Lease

4907 Southridge Blvd. | Memphis, TN 38141

Property Features

- 10 - 19.11 acres improved
- Fully entitled/city approved IOS site
- 12" gravel
- Fenced and lit
- Utilities and sewer are on-site
- The site will be ready June 1

Travel Distances

 or 	2.7 miles
	3.4 miles
	8.1 miles

Memphis is America's Distribution Center



75% of the US can be reached within 20 hours by truck.



Memphis is one of 4 US cities served by 5 Class I rail systems.

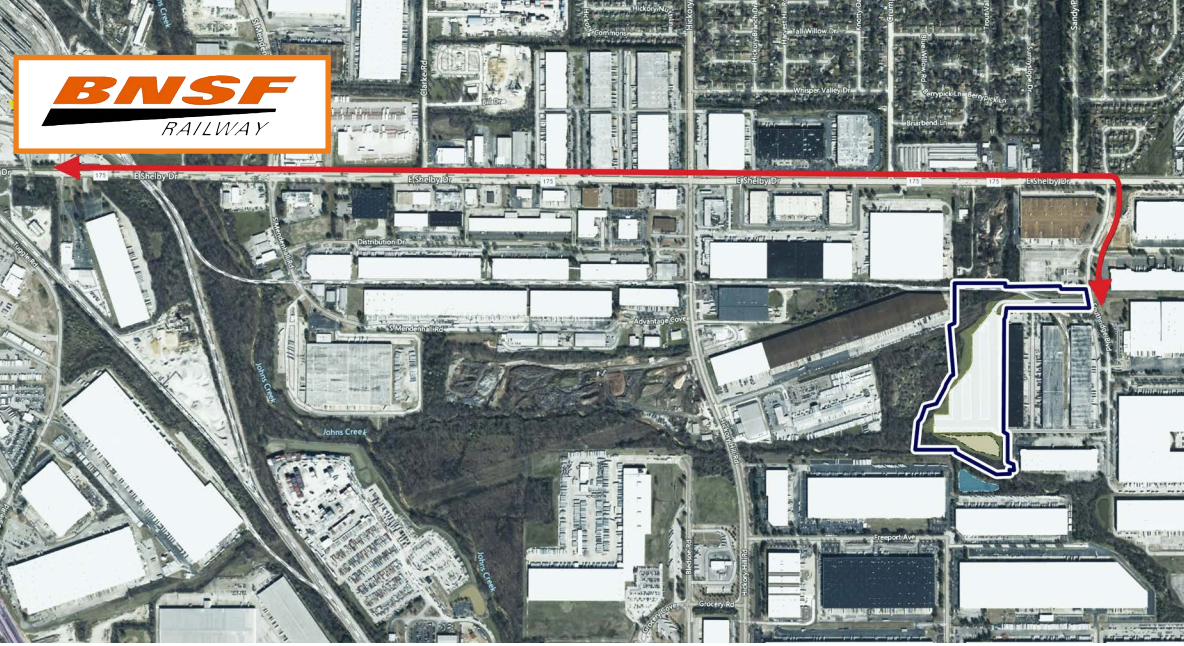


The Port of Memphis is the 5th largest inland port in the US.



Memphis Int'l Airport is the busiest air cargo airport in the US.

Location & Access



**19.11±
Acres**

**Just
3.4
Miles
from**



ELLIOT EMBRY, SIOR
Direct: 901 312 4902
Cell: 901 634 2583
elliott.embry@colliers.com

BRYCE DAVES, SIOR
Direct: 901 312 4926
Cell: 662 299 5709
bryce.daves@colliers.com



6363 Poplar Ave., Suite 220
Memphis, TN 38119
901 375 4800
colliers.com/memphis