

# FOR LEASE | DOWNTOWN CLASS A OFFICE SPACE

ONE CITY CENTER, 7TH FLOOR, PORTLAND, ME 04101



## PROPERTY HIGHLIGHTS

The entire seventh floor is available for lease in this iconic Class A office tower located in the heart of downtown Portland. One City Center offers many amenities including a 5-story atrium with escalator and glass elevator, food court, a fitness facility, shared conference space, 24-hour security and multiple eateries.

- 12,893± SF suite
- Downtown location with easy access to I-295 and Maine Turnpike
- Landlord-owned parking garage adjacent to building
- Walking distance to Portland's Old Port and waterfront (Walk Score = 97)
- Lease Rate: \$17.00/SF NNN
- Available Q1 2024

# FOR LEASE | DOWNTOWN CLASS A OFFICE SPACE

ONE CITY CENTER, 7TH FLOOR, PORTLAND, ME 04101



## PROPERTY DETAILS

OWNER	One City Center Associates, LLC
ASSESSOR'S REF	Map 32, Block L, Lot 2
BUILDING SIZE	210,000± SF
NO. OF STORIES	Thirteen (13)
YEAR BUILT	1987
ZONING	B3 - Downtown Business
ELEVATOR/ ESCALATOR	Escalators first to second floor and second floor to third floor; Five (5) passenger elevators
SPRINKLER	Yes, wet system
UTILITIES	Municipal water and sewer
HVAC	Central HVAC
AMENITIES	Full-service food court, on-site management, 24-hour security, fitness facility, parking garage, access to large conference room
PARKING	Below market rates in Landlord- owned garage.
AVAILABLE SPACE	12,893± SF (7th Floor) Other suites available. See Brokers for details.
LEASE RATE	\$17.00/SF NNN
CAMs	\$11.35/SF (estimated)
DATE AVAILABLE	4/1/2024

### OTHER ONE CITY CENTER TENANTS

Bank of America  
The Bay Club (gym)  
Dunkin Donuts  
Citrus  
City Deli  
David R. Beneman - Federal Public  
Defender  
Dirigo Management Group  
General Services Administration  
MainePERS  
Medical Mutual Insurance Company of  
Maine  
Monks O'Neil Development LLC  
Preti Flaherty Beliveau & Pachios LLP

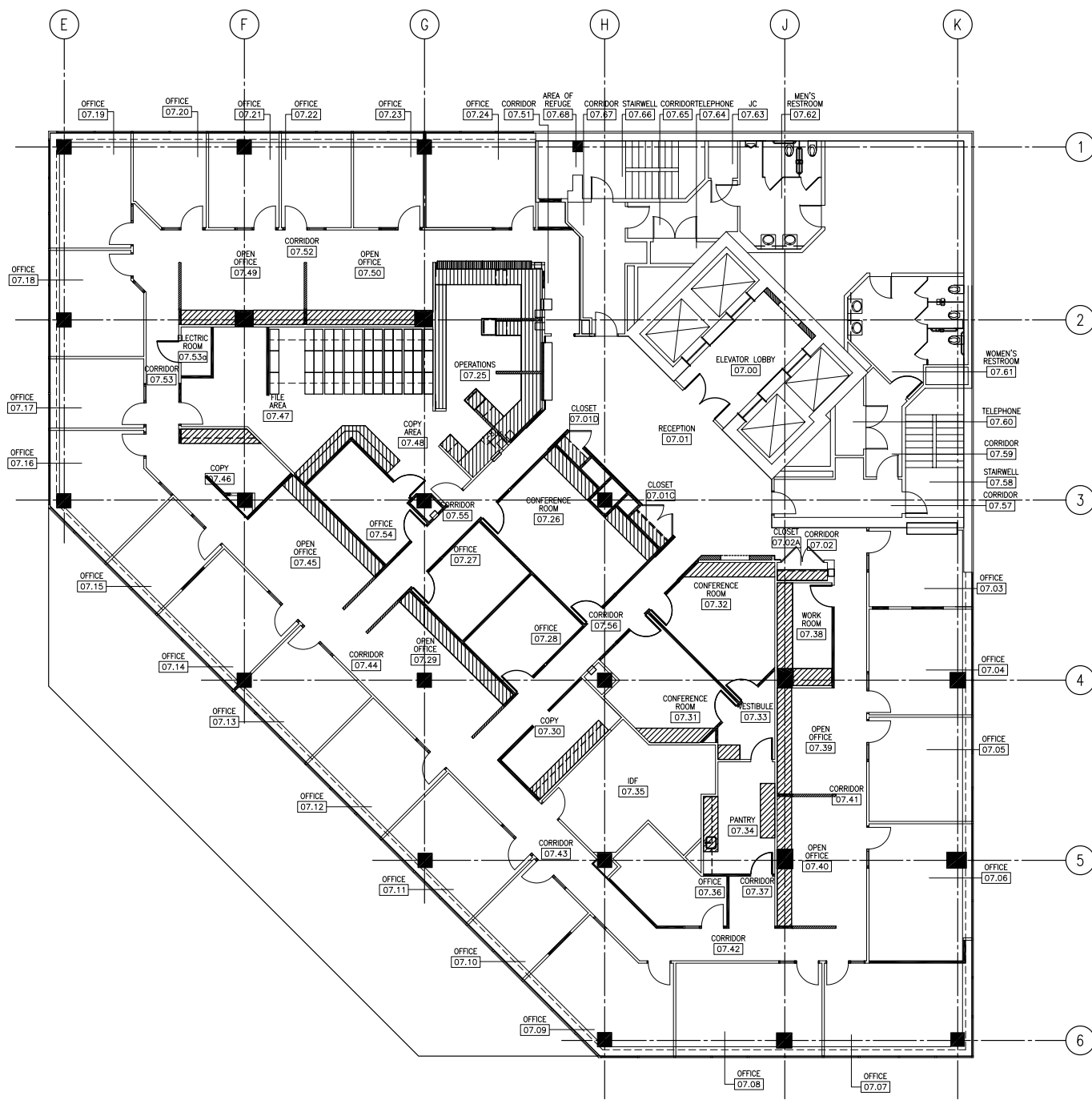




FOR LEASE | DOWNTOWN CLASS A OFFICE SPACE  
ONE CITY CENTER, 7TH FLOOR, PORTLAND, ME 04101



FLOOR PLAN - 7th FLOOR



# FOR LEASE | DOWNTOWN CLASS A OFFICE SPACE

ONE CITY CENTER, 7TH FLOOR, PORTLAND, ME 04101



## CONTACT US



**TONY MCDONALD, CCIM/SIOR**  
Partner

+1 207.553.1704 D

+1 207.749.1000 C

[tmcdonald@boulos.com](mailto:tmcdonald@boulos.com)



**JOHN FINEGAN**  
Associate Broker

+1 207.553.1718 D

+1 207.829.8305 C

[jfinegan@boulos.com](mailto:jfinegan@boulos.com)



©2022 The Boulos Company, Inc. All rights reserved. This information has been obtained from sources believed reliable, but has not been verified for accuracy or completeness. You should conduct a careful, independent investigation of the property and verify all information. Any reliance on this information is solely at your own risk. The Boulos Company and The Boulos Company logo are service marks of The Boulos Company, Inc. All other marks displayed on this document are the property of their respective owners. Photos herein are the property of their respective owners. Use of these images without the express written consent of the owner is prohibited.