



# Flex Office Sublease

**Empire Corporate Park  
20300 Empire Ave, B120  
Bend, OR 97703**

## Features:

- Scenic campus environment featuring well-maintained grounds, a pond, and a picnic area
- Ideal location for a research and development (R&D) company
- Conveniently located near Highway 97, Downtown Bend, and nearby areas
- Excellent combination of warehouse and office space, including a Bio Sensor Level 2 Lab

## Space Profile:

<b>Premises</b>	Suite B120	<b>Availability</b>	TBD
<b>RSF</b>	2,000-9,500 SF	<b>Term</b>	Thru Aug 2028
<b>Rental Rate</b>	\$1.07/SF/Mo NNN	<b>Zoning</b>	(ME) Mixed Employment
<b>OpEx</b>	Est. \$0.48/SF/Mo	<b>Built</b>	1993

## Contact:

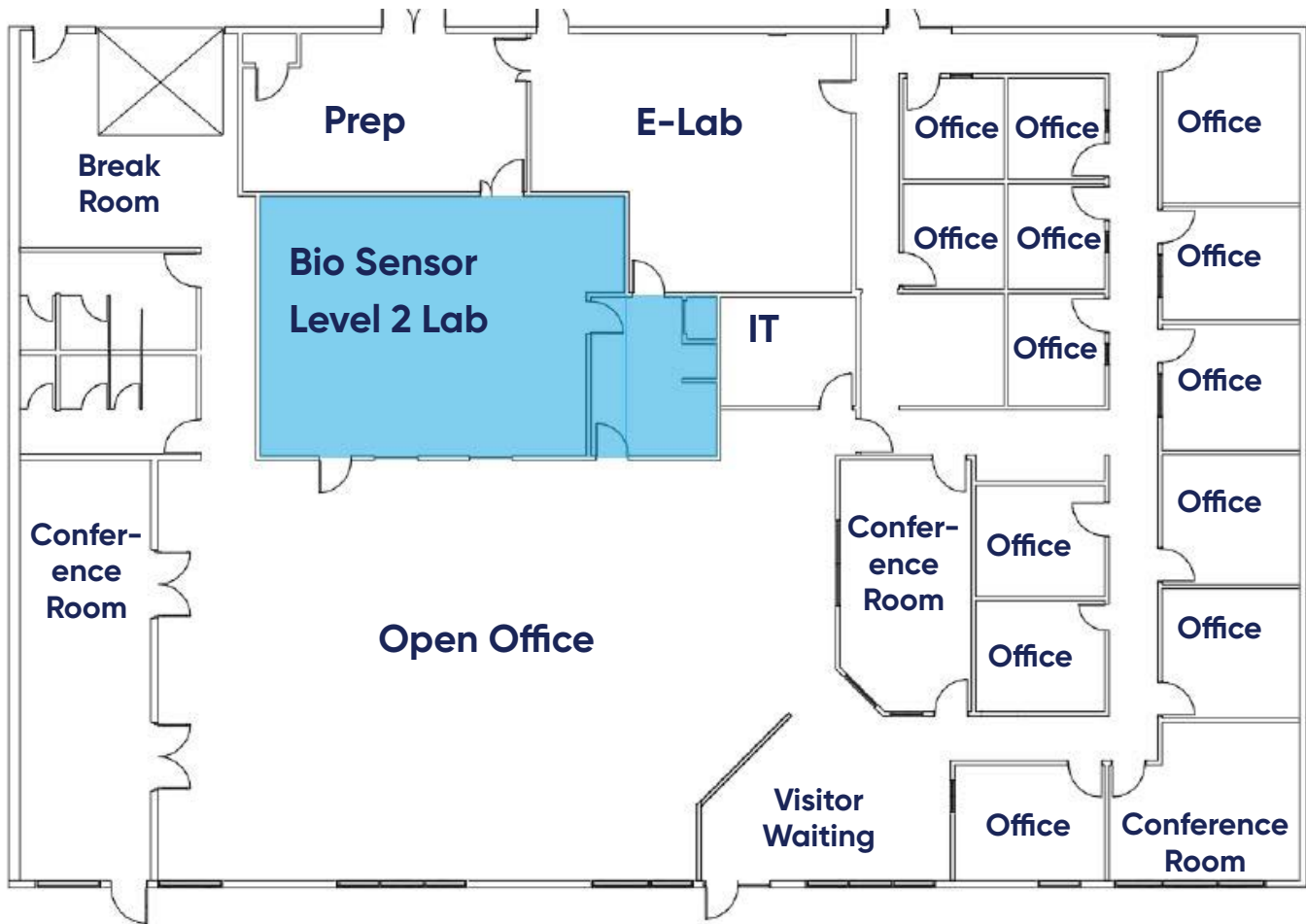


**Sean Brennecke**  
503.351.7788  
sbrennecke@cresa.com



**Summer Blasquez**  
503.334.0746  
sblasquez@cresa.com

Space B120: 2,000-9,500 SF



## Space Notes

- 1 Prep Room
- 2 Labs
- 1 IT Room
- 1 Break Room
- 2 Conference Rooms
- 13 Offices
- 1 Waiting Room
- 1 Open Office Area

**Bio-Sensor (BSL 2) Lab**



## Flex Office Sublease

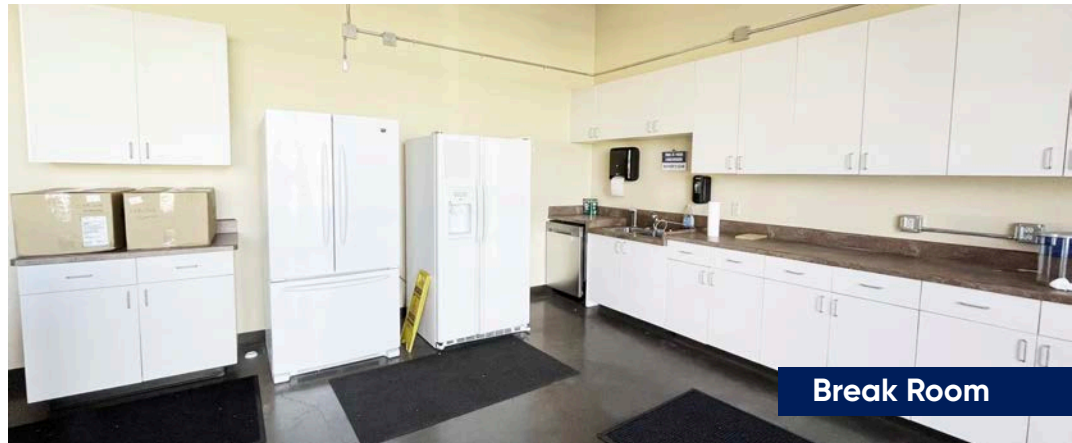
20300 Empire Ave, B120  
Bend, OR 97703



**Bio-Sensor (BSL 2) Lab**



**Bio-Sensor (BSL 2) Lab**



**Break Room**



**Bio-Sensor (BSL 2) Lab**

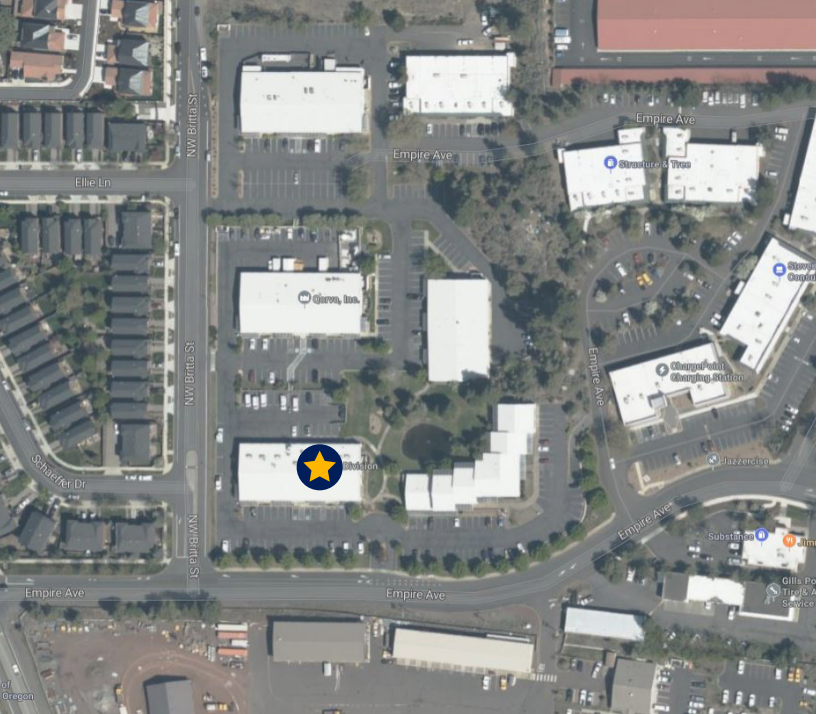


**Waiting Room**

**cresa** ::::

1355 NW Everett St. Suite 100 | Portland, OR 97209

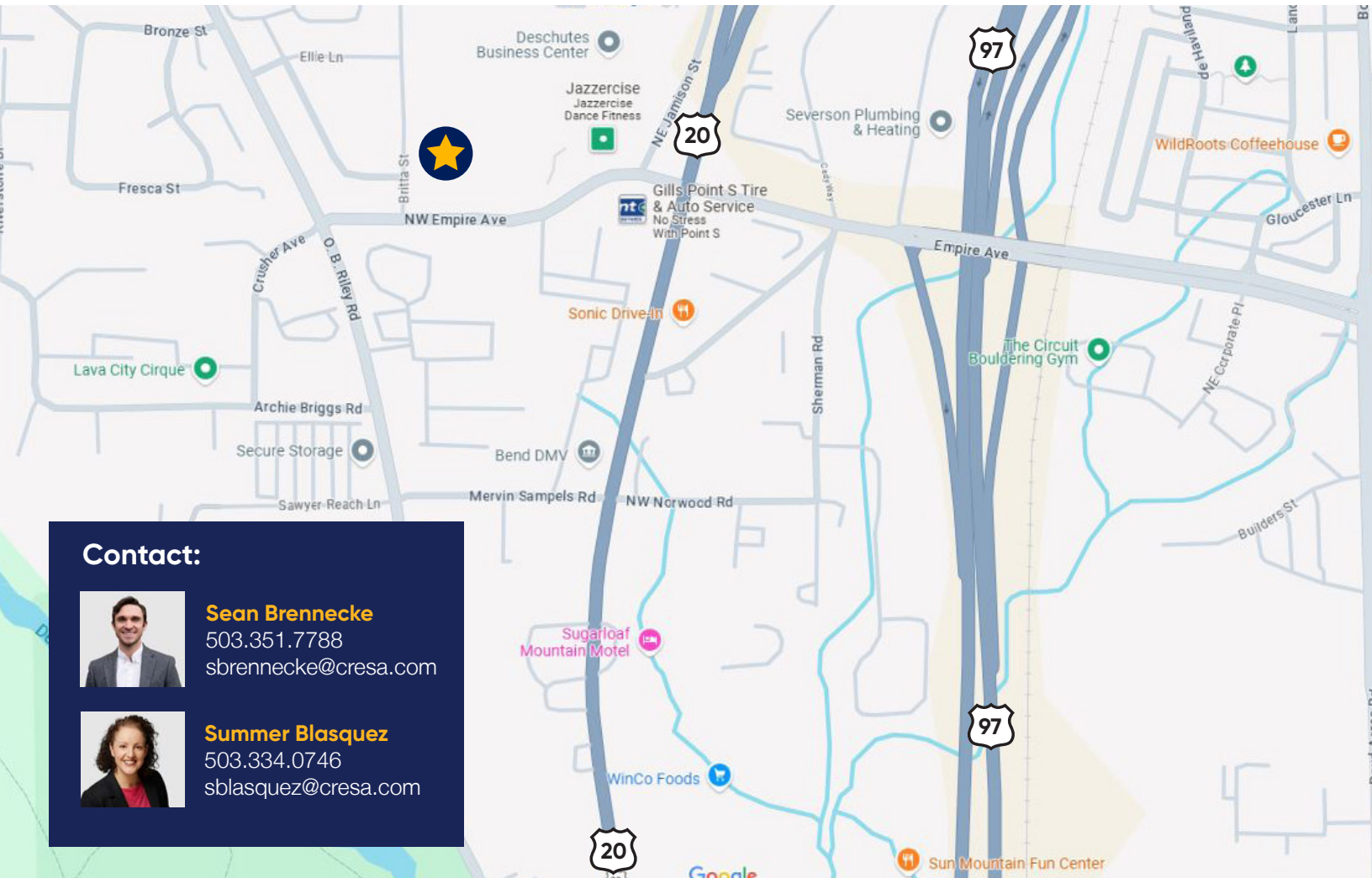
[cresa.com/Portland](http://cresa.com/Portland)



Conference Room

## Flex Office Sublease

20300 Empire Ave, B120  
Bend, OR 97703



### Contact:



**Sean Brennecke**

503.351.7788  
sbrennecke@cresa.com



**Summer Blasquez**

503.334.0746  
sblasquez@cresa.com

**cresa** . . .

Cresa © 2024. All rights reserved. The information contained in this document has been obtained from sources believed reliable. While Cresa does not doubt its accuracy, Cresa has not verified it and makes no guarantee, warranty, or representation about it. It is your responsibility to independently confirm its accuracy and completeness. Any projections, opinions, assumptions or estimates used are for example only and do not represent the current or future performance of the property. The value of this transaction to you depends on tax and other factors which should be evaluated by your tax, financial and legal advisors. You and your advisors should conduct a careful, independent investigation of the property to determine to your satisfaction the suitability of the property for your needs.