

ICONIC 1ST + UNION
RETAIL AVAILABLE



ARCADE BUILDING

1401 1st Ave | Seattle, WA 98101



TRACY CORNELL
tracyc@gibraltarusa.com
206.948.0630

LAURA MILLER
laura@gibraltarusa.com
206.351.3573

1ST + UNION THE ARCADE BUILDING

- The Arcade Building is an iconic Pike Place Market landmark consisting of 79 residential units and 49,000 SF of retail
- 2,837 SF of retail or cafe space available with storefront visibility on 1st Avenue and Union Street
- Prime corner location
- Adjacent to the Four Seasons Hotel and Residences and Seattle Art Museum
- This highly walkable location is steps away from the entrance to the Pike Place Market and the \$700M Seattle Waterfront Transformation opening Fall 2024
- Over 18,000 residents in the immediate Pike Place/ Waterfront neighborhood
- Over 6 hotels within walking distance of the site: Thompson Hotel, Inn at the Market, The Charter Hotel, The State Hotel, The Alexis, and The Pali Hotel
- Available immediately, call for rates





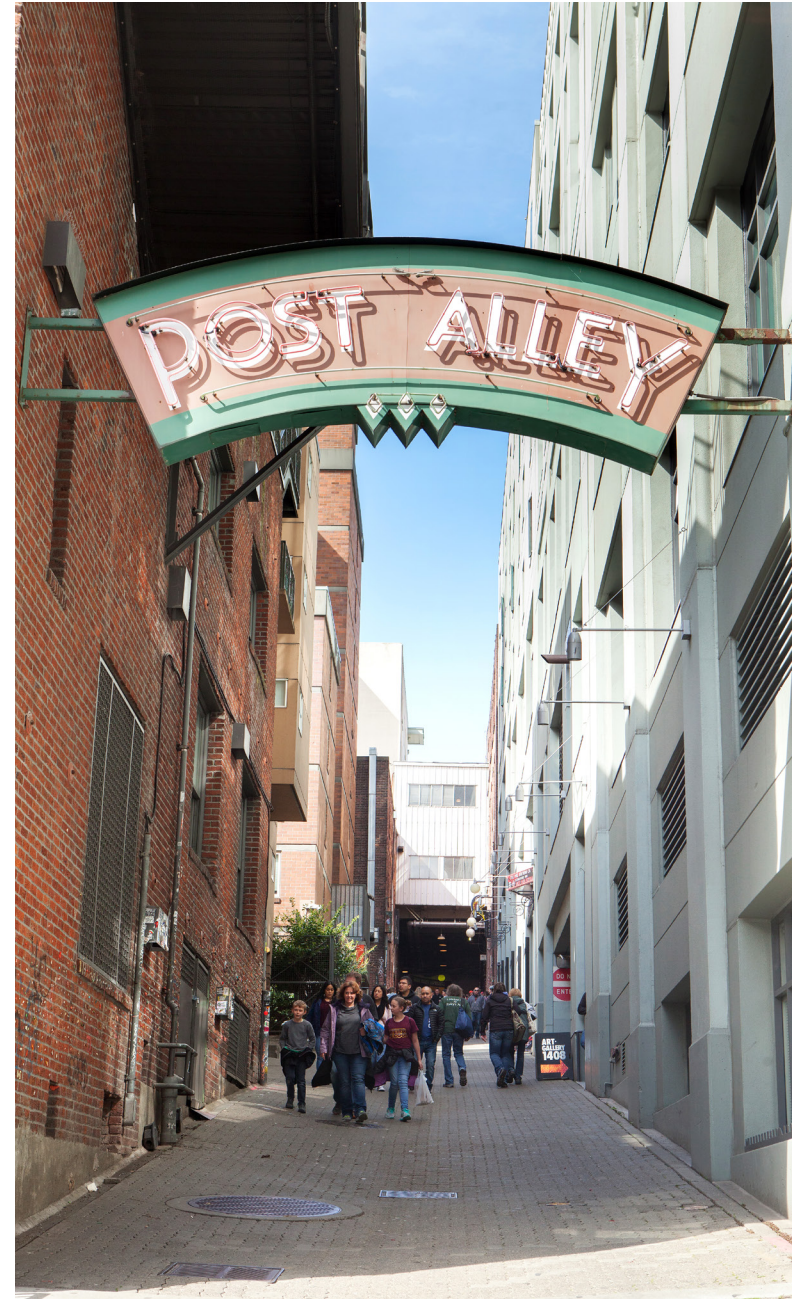
98
WALKSCORE

10M+
PIKE PLACE
MARKET
VISITORS

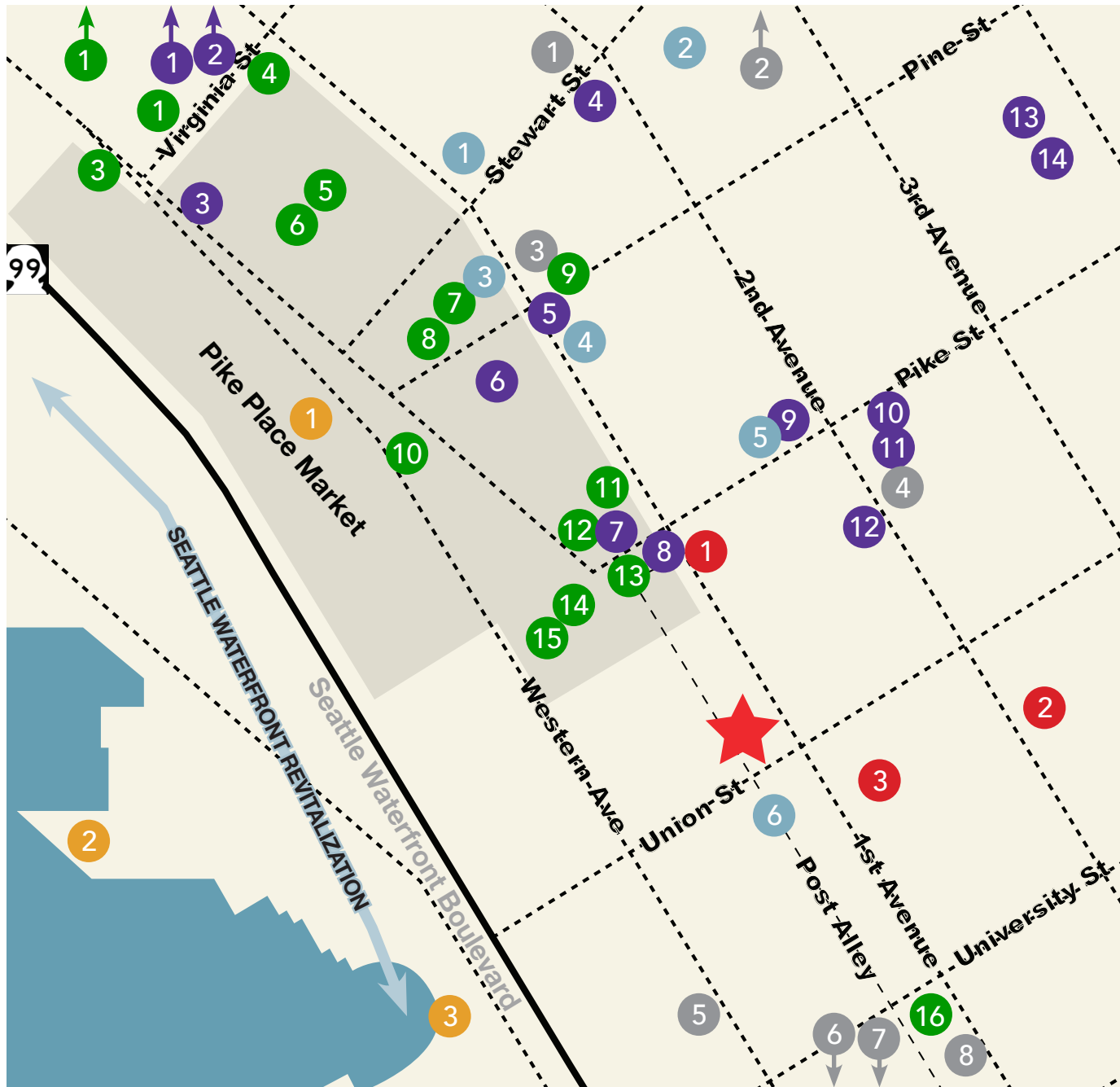
150K
DAYTIME
POPULATION

600K+
TRADE AREA
RESIDENTS

FIRST + UNION



FIRST + UNION SITE MAP



ATTRACTIONS

1. Pike Place Market
2. Seattle Aquarium
3. Seattle Great Wheel

DINING

- | | |
|---------------------------------|---------------------------|
| 1. El Gaucho | 9. Cupcake Royale |
| 2. Seatown Seabar | 10. Lowell's Restaurant |
| 3. Cutters Crabhouse | 11. Radiator Whiskey |
| 4. Virginia Inn | 12. Matt's in the Market |
| 5. Kells Irish Restaurant & Bar | 13. IL Bistro |
| 6. The Pink Door | 14. Place Pigalle |
| 7. Sushi Kashiba | 15. Maximilien Restaurant |
| 8. Cafe Campagne | 16. Von's 1000 Spirits |

CULTURE

1. Showbox
2. Benaroya Hall
3. Seattle Art Museum

SHOPPING

- | | |
|-------------------------|---------------------------|
| 1. Orvis | 8. DeLaurenti Food & Wine |
| 2. Patagonia | 9. Ben Paris |
| 3. Kitchen & Market | 10. Wells Fargo |
| 4. H Mart | 11. KÜHL |
| 5. Fjällräven | 12. Target |
| 6. Rachel's Ginger Beer | 13. Dr. Martens |
| 7. Ellenos | 14. Vans |

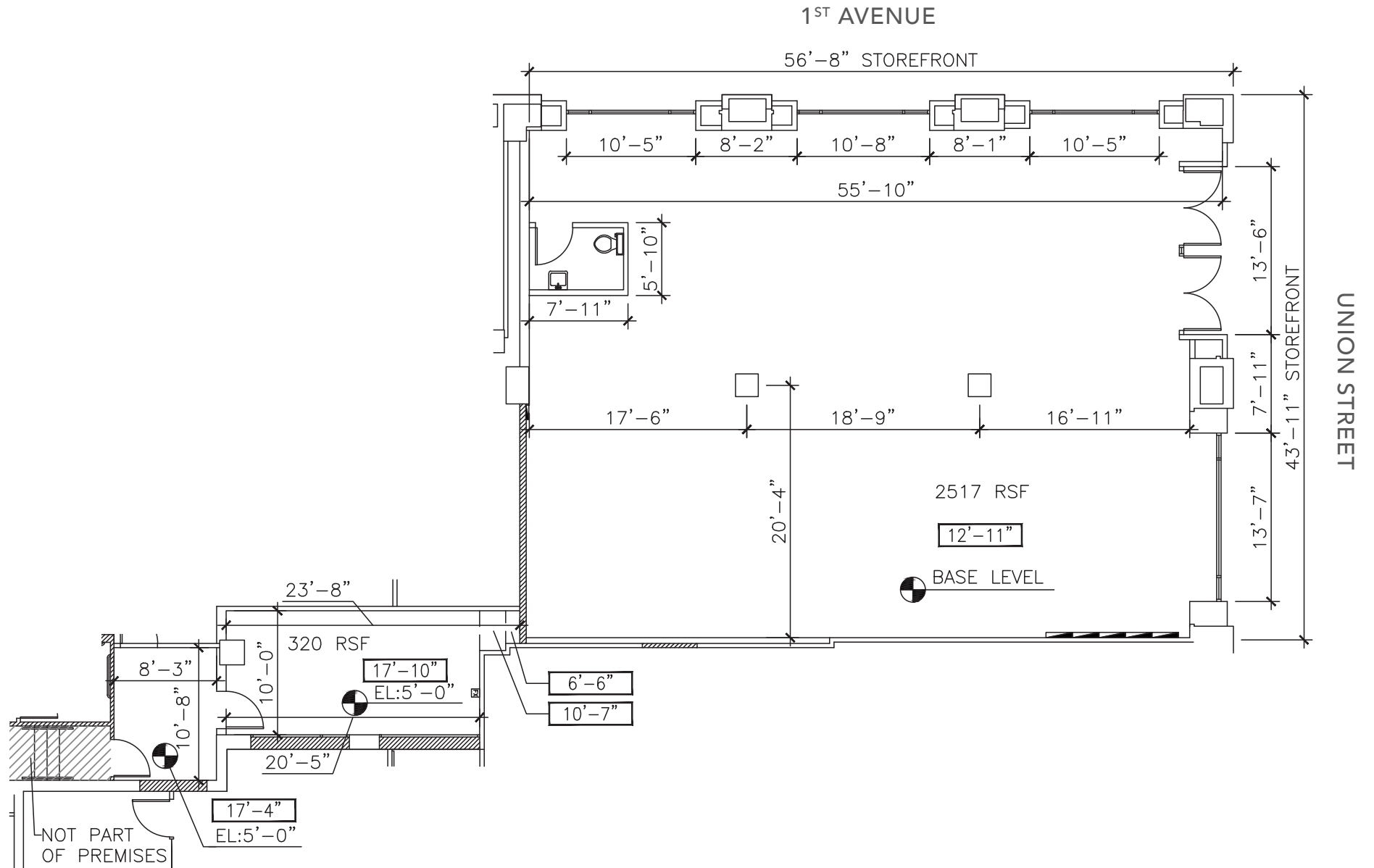
HOTELS

- | | |
|----------------------|-----------------------|
| 1. Thompson Hotel | 4. Palihotel |
| 2. Charter Hotel | 5. The State Hotel |
| 3. Inn at the Market | 6. Four Seasons Hotel |

RESIDENTIAL

- | | |
|------------------------|---------------------|
| 1. Viktoria Apartments | 5. Harbor Steps |
| 2. Eammons on 3rd | 6. Waterfront Place |
| 3. Helios | 7. Waterfront Tower |
| 4. West Edge | 8. Cyrene |

FIRST + UNION SITE PLAN



FOR MORE INFORMATION PLEASE CONTACT:

TRACY CORNELL

tracyc@gibraltarusa.com

206.948.0630

LAURA MILLER

laura@gibraltarusa.com

206.351.3573



This information has been obtained from sources believed reliable. No guarantee, warranty or representation, express or implied, is made as to the accuracy of the information contained herein, and same is submitted subject to errors, omissions, change of price, rental or other conditions withdrawal without notice, and to any special listing conditions, imposed by our principals. Any projections, opinions, assumptions or estimates used are for example only and do not represent the current or future performance of the property.