

MEDICAL OR RETAIL FOR LEASE ON PRIME ROSECRANS AVE LOCATION

11558 ROSECRANS AVENUE, NORWALK CA 90650



cag COMMERCIAL ASSET GROUP
For Lease
310.275.8222

1801 Century Park East, Suite 1550
Los Angeles, California 90067
P 310.275.8222 F 310.275.8223
www.cag-re.com
License #01876070

Alex Shabani
Senior Managing Director
Phone: 310.272.7397
Email: alex@cag-re.com
Lic: 01352902

cag | COMMERCIAL
ASSET GROUP



ROSECRANS AVENUE JUST OFF PIONEER BOULEVARD

11558 ROSECRANS AVENUE, NORWALK, CA 90650

Highlights

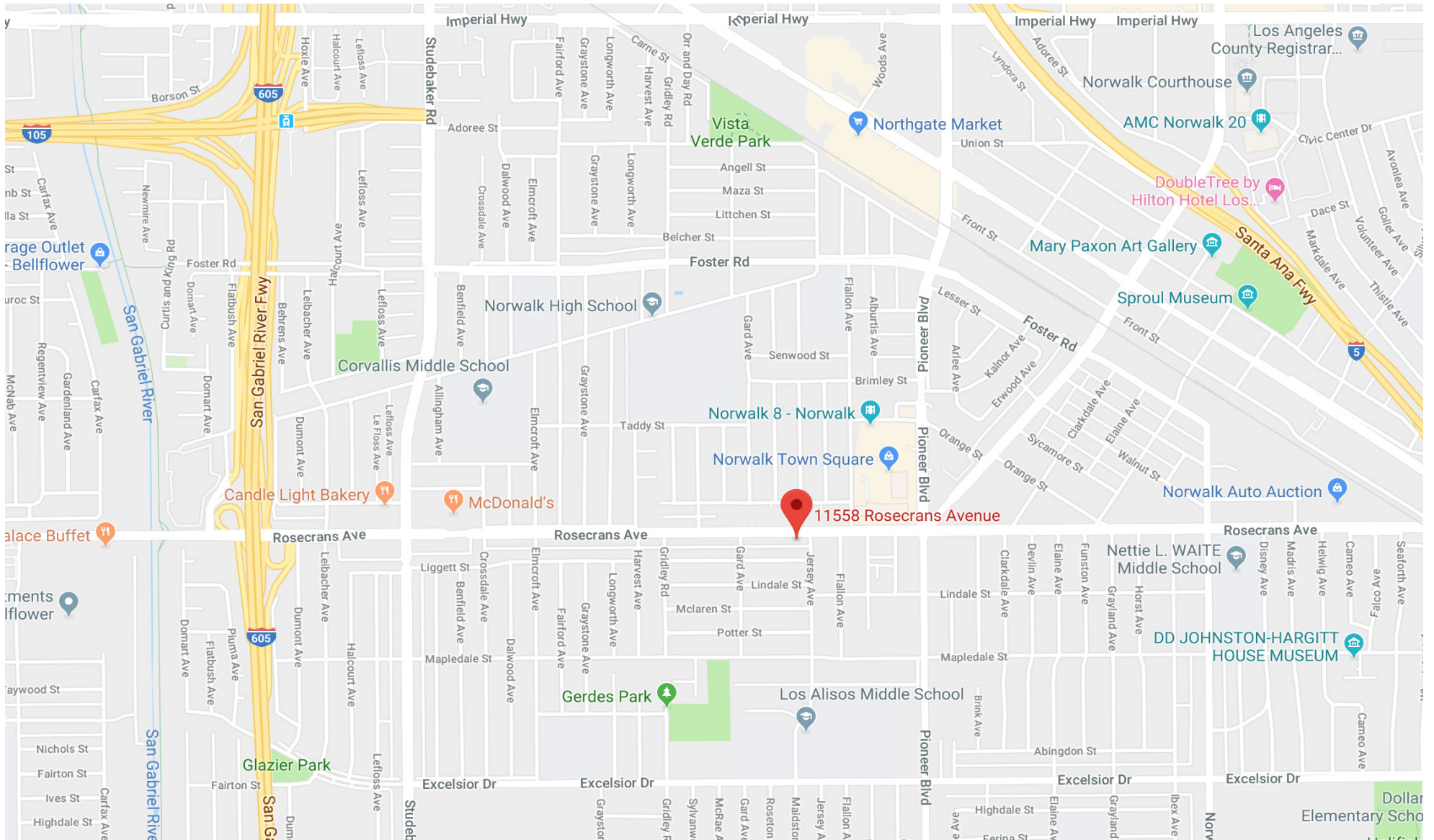
- Approximately 890 SF
- Well Maintained Center
- Easily Accessible Location
- Ample Parking
- Monument Signage Available
- Ideal Location for: Dental or Medical Practice, Tax Services, Staffing Agency, Computer Repair, Nail Salon, Facial, Spa, Massage, **Barber** Shop, Flower Shop, Ice Cream and More

Area Amenities

- Prime Norwalk Location On Heavily Trafficked Rosecrans Ave
- Cars Per Day: 32,000
- Easy Access to FWY's 5 and 605
- 1 Mile Population: 40,733
- 1 Mile AVG Household Income: \$61,632
- Surrounded by national and regional tenants

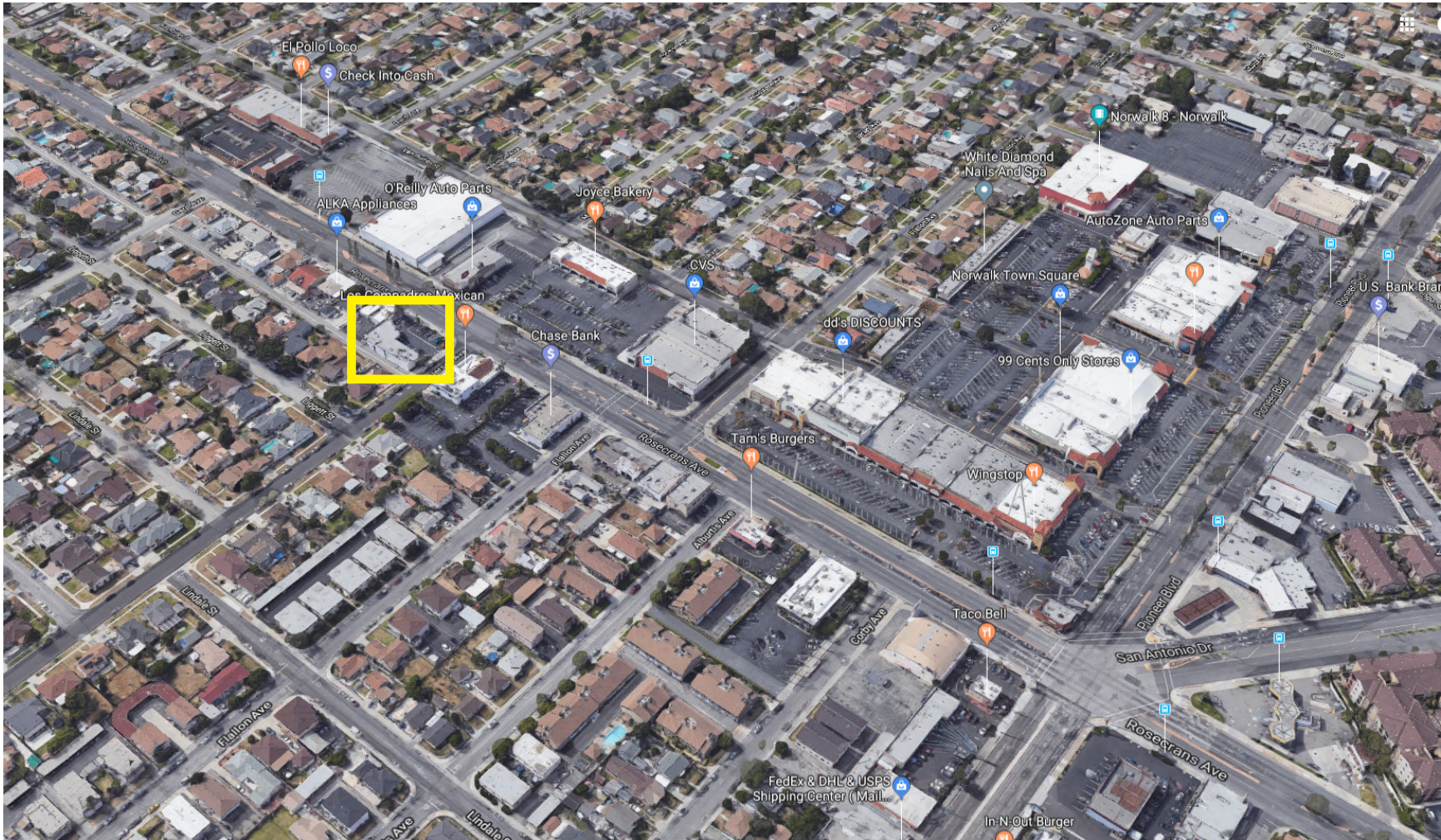
MAP

11558 ROSECRANS AVENUE, NORWALK, CA 90650



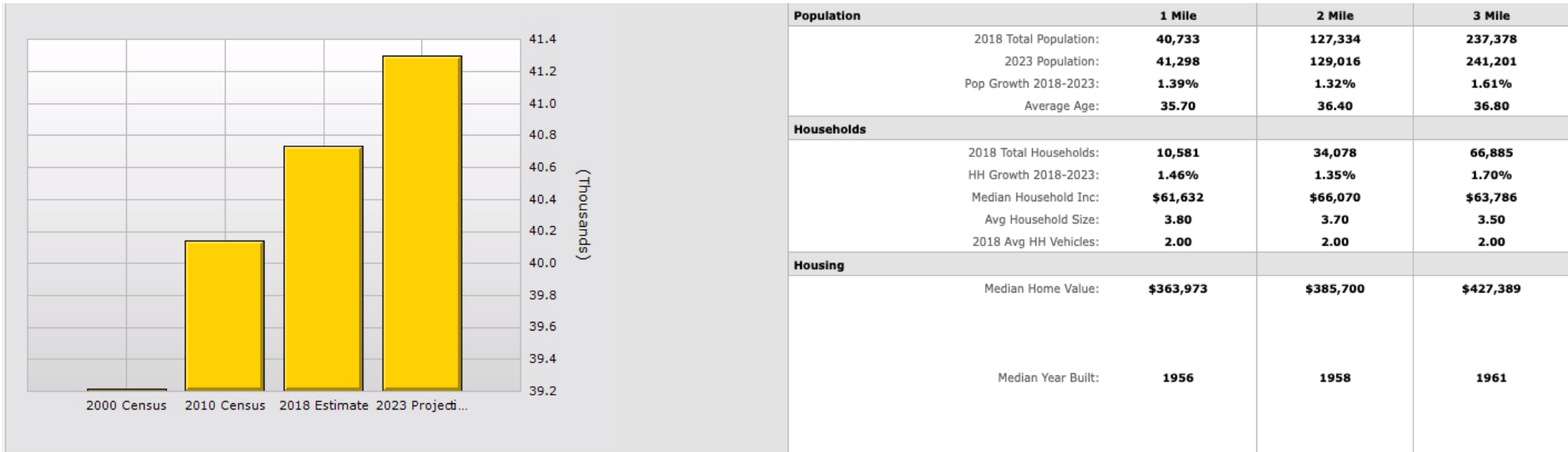
AERIAL

11558 ROSECRANS AVENUE, NORWALK, CA 90650



DEMOGRAPHICS

11558 ROSECRANS AVENUE, NORWALK, CA 90650





For more information, please call.



1801 Century Park East, Suite 1550
Los Angeles, California 90067
Phone 310.275.8222 Fax 310.275.8223
www.cag-re.com
License #01876070

Alex Shabani
Senior Managing Director
Phone: 310.272.7397
Email: alex@cag-re.com
Lic: 01352902

These materials are based on information and content provided by others, which we believe are accurate. No guarantee, warranty or representation is made by Commercial Asset Group, Inc. or its personnel. All interested parties must independently verify accuracy and completeness. As well, any projections, assumptions, opinion, or estimates are used for example only and do not represent the current or future performance of the identified property. Your tax, financial, legal and toxic substance advisors should conduct a careful investigation of the property and its suitability for your needs, including land use limitations. The property is subject to prior lease, sale, change in price, or withdrawal from the market without notice.