

OFFICE SPACE FOR LEASE



NINE 01

901 N. Lake Destiny Road
Maitland, FL 32751

901 @ Maitland Center is a four-story office building located in the Maitland Center Office Park. Dramatic renovations of the lobby, cafe, corridors and restrooms are now complete. 901 features scenic lake views with docks and gazebos, 24-hour fitness center and a convenient tenant grab-n-go. The easily accessible building sits along I-4, within Orlando's largest suburban office market and is close to Downtown Orlando.

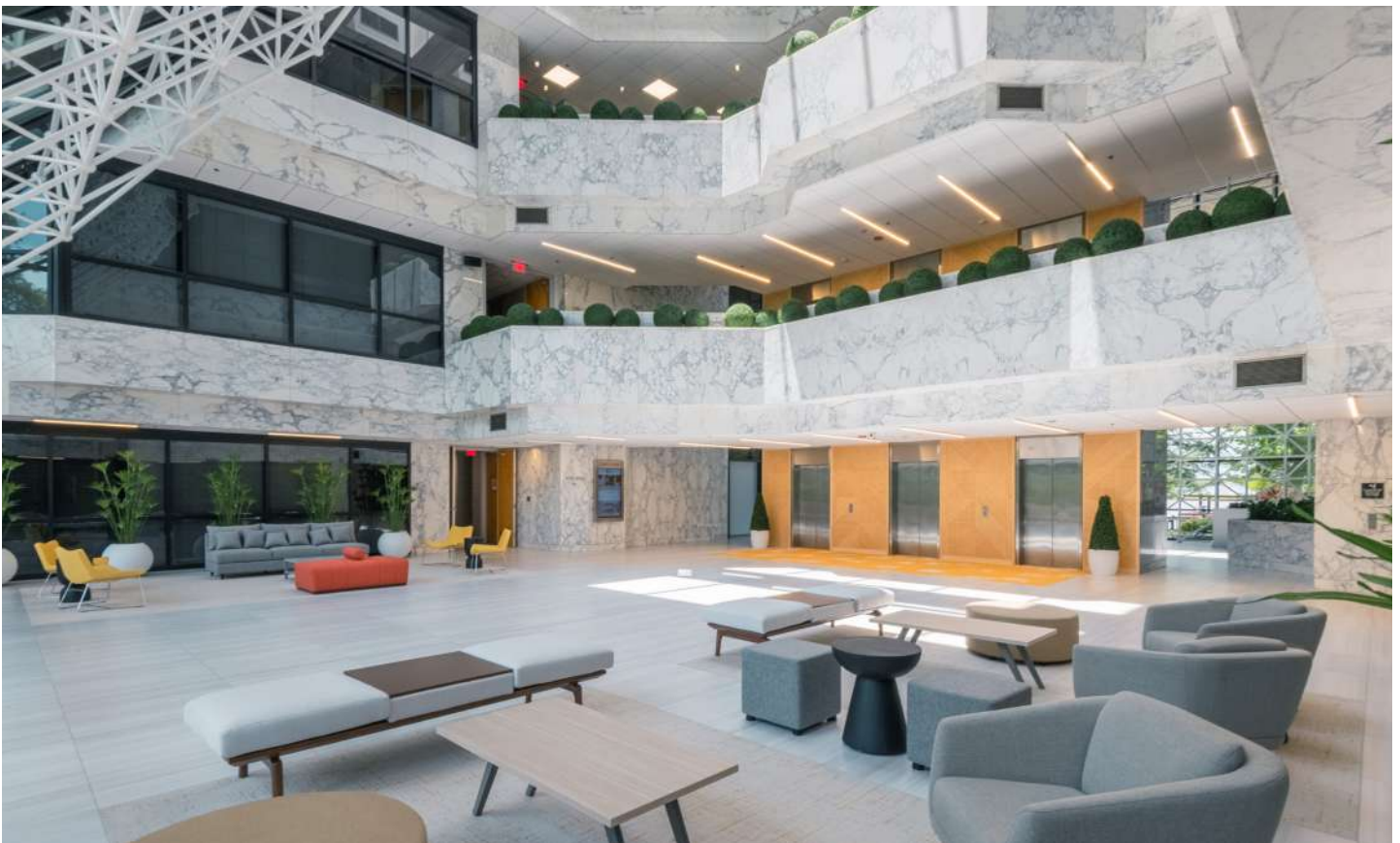
NEW BUILDING FEATURE

Full lobby upgrade with collaborative seating areas, refreshed corridors and updated restrooms.

RSF AVAILABLE
1,894 - 17,431

[Lobby Virtual Tour: Click Here](#)

5% Co-Broker Commission



For more information, contact:

Reanna Becker

(407) 360-9675 | RBecker@trpre.com

www.trpre.com

SPACE AVAILABLE

Suite	RSF
103	1,894 Virtual Tour
185	2,036 Virtual Tour
225	11,040 Virtual Tour
310	11,159 Virtual Tour
450	17,431

Options to Demise

5% CO-BROKER COMMISSION



Rents from \$24.00 RSF - Full Service
Virtual Tour: Click Suite RSF

BUILDING FEATURES & AMENITIES

- New Lobby Transformation
- New Building & Tenant Signage-Installed
- Renovated Common Areas & Restrooms
- Highly Visible I-4 Pylon Signage
- 24-Hour Fitness Center
- Tenant Grab-N-Go Cafe
- Gorgeous Lake Views
- After-Hours Security
- On-Site Building Engineer
- Covered Loading Dock + Leveler

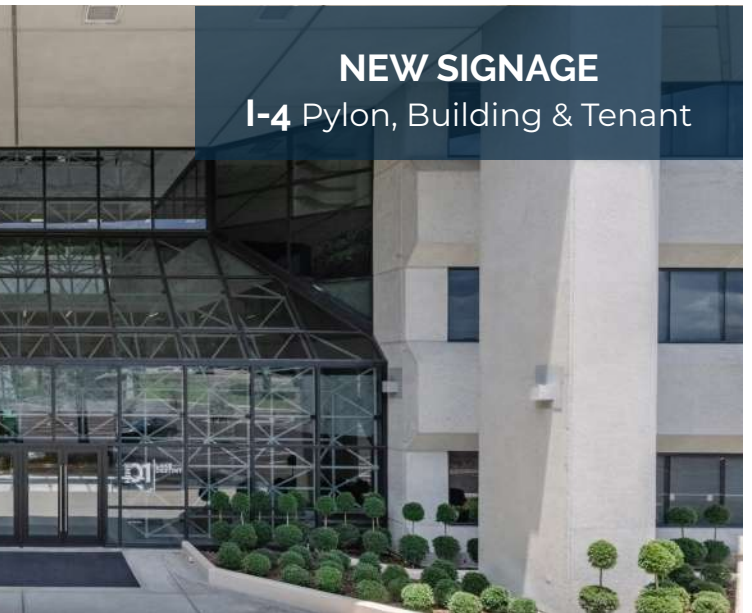


For more information, contact:

Reanna Becker
(407) 360-9675 | RBecker@trpre.com



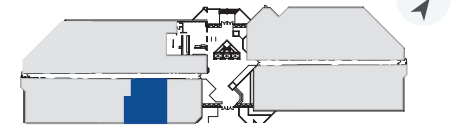
NEWLY RENOVATED
Lobby, Corridors & Restrooms



NEW SIGNAGE
I-4 Pylon, Building & Tenant

1st
Floor

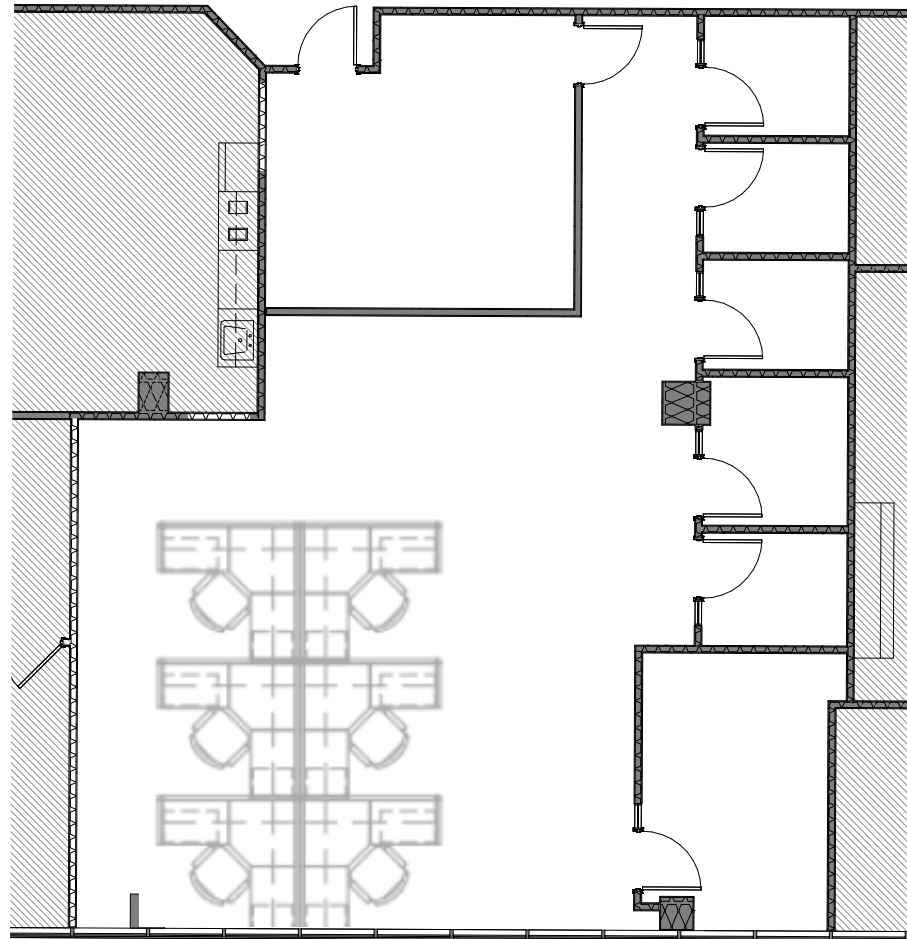
Suite 103: 1,894 RSF



Furniture Now Available

Suite Available 6/1/26

[Virtual Tour](#)



Lake View

For more information, contact:

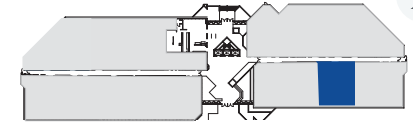
Reanna Becker

(407) 360-9675 | RBecker@trpcr.com

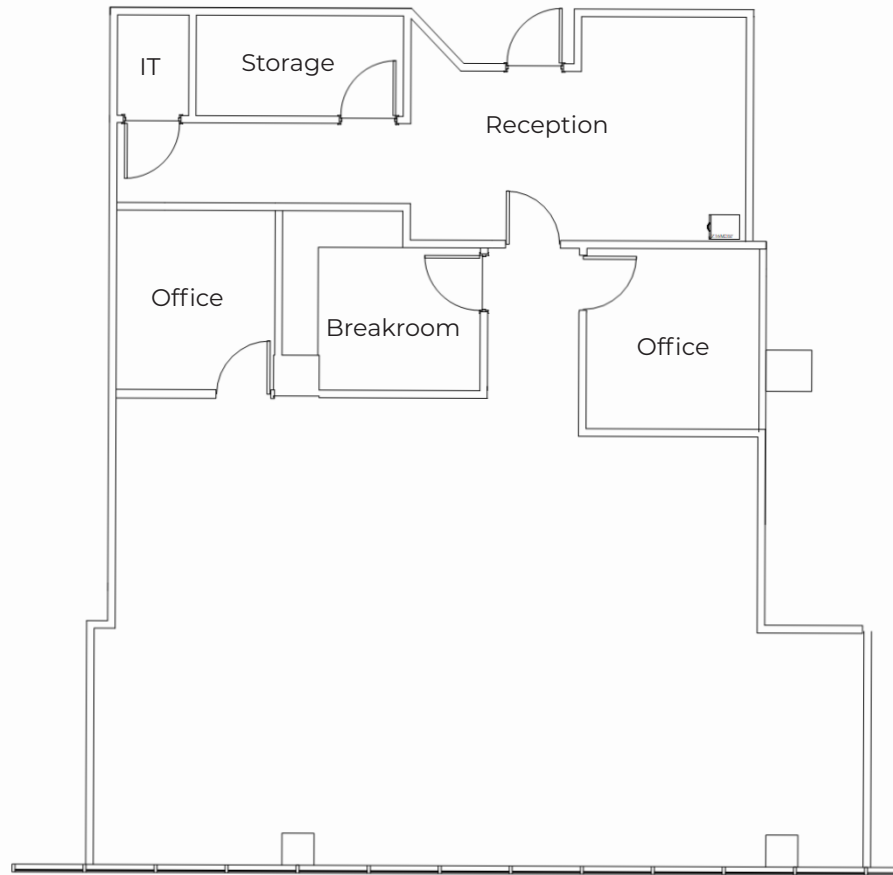
www.trpcr.com

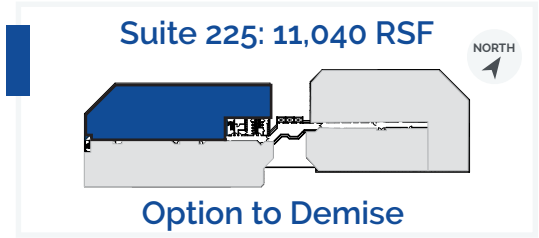
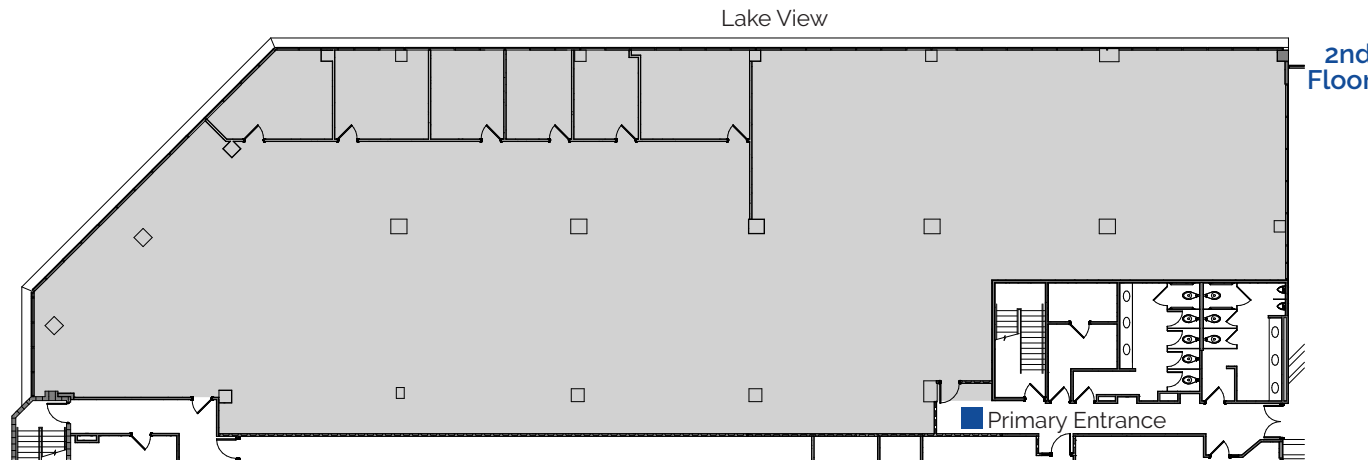
1st
Floor

Suite 185: 2,036 RSF



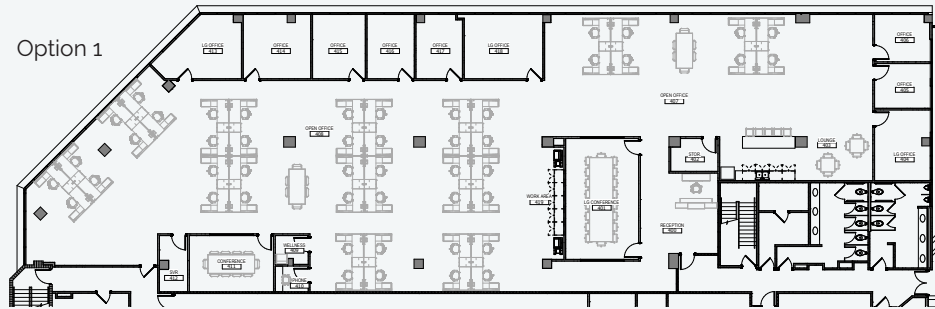
[Virtual Tour](#)





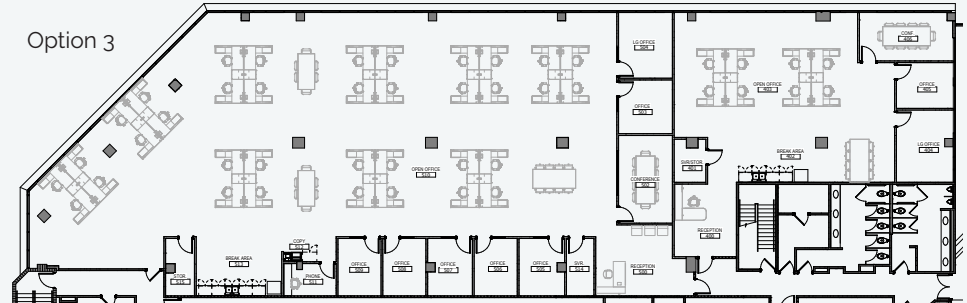
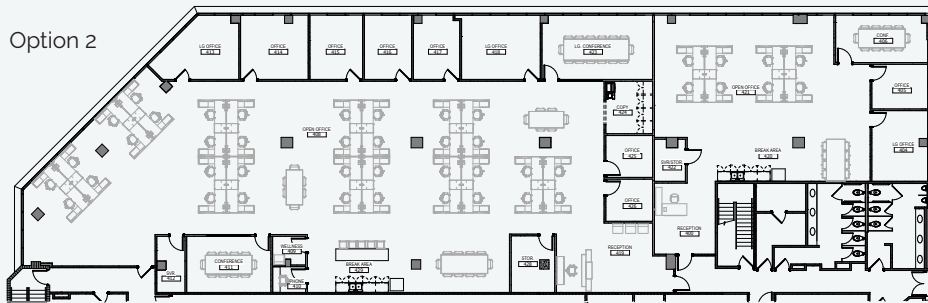
[Virtual Tour](#)

Space Plan Options



8,374 RSF

2,666 RSF

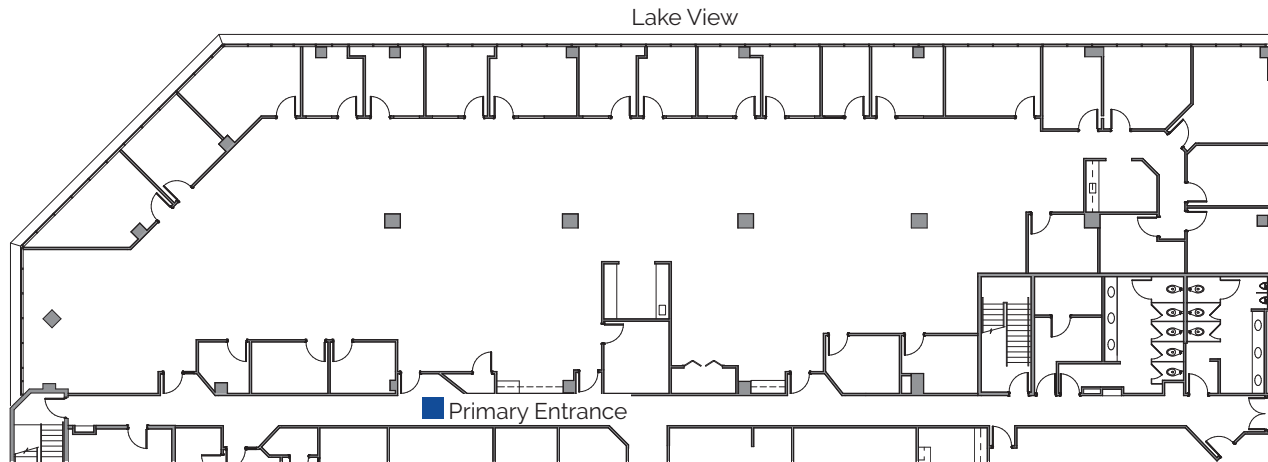


8,374 RSF

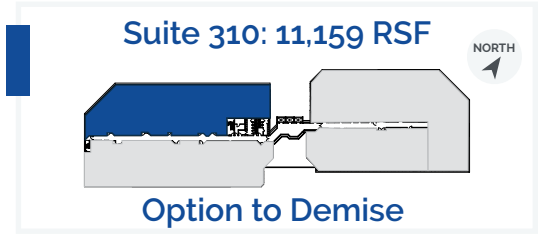
2,666 RSF

For more information, contact:

Reanna Becker
(407) 360-9675 | RBecker@trpcr.com



3rd Floor

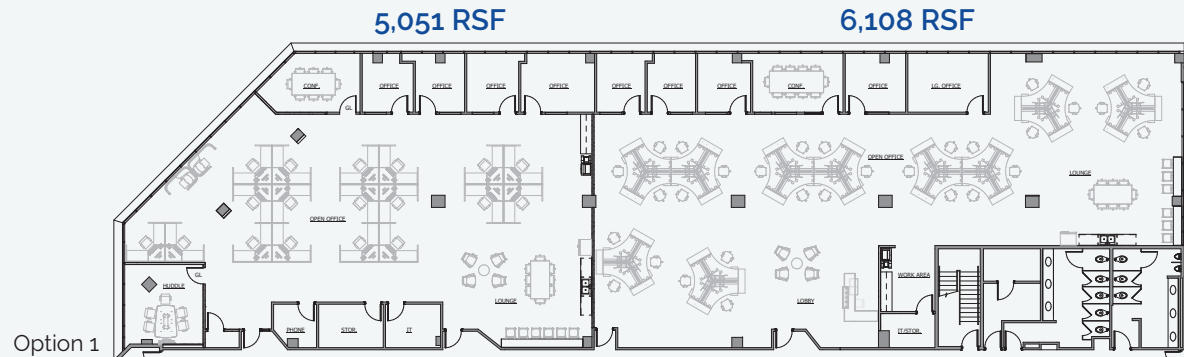


Suite 310: 11,159 RSF

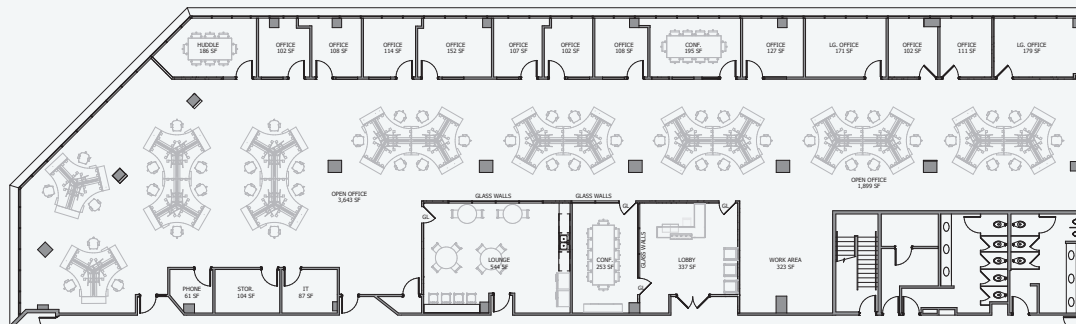
Option to Demise

[Virtual Tour](#)

Space Plan Option



Option 1



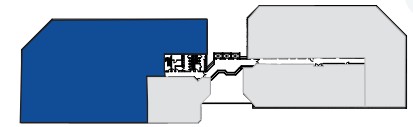
Option 2

For more information, contact:

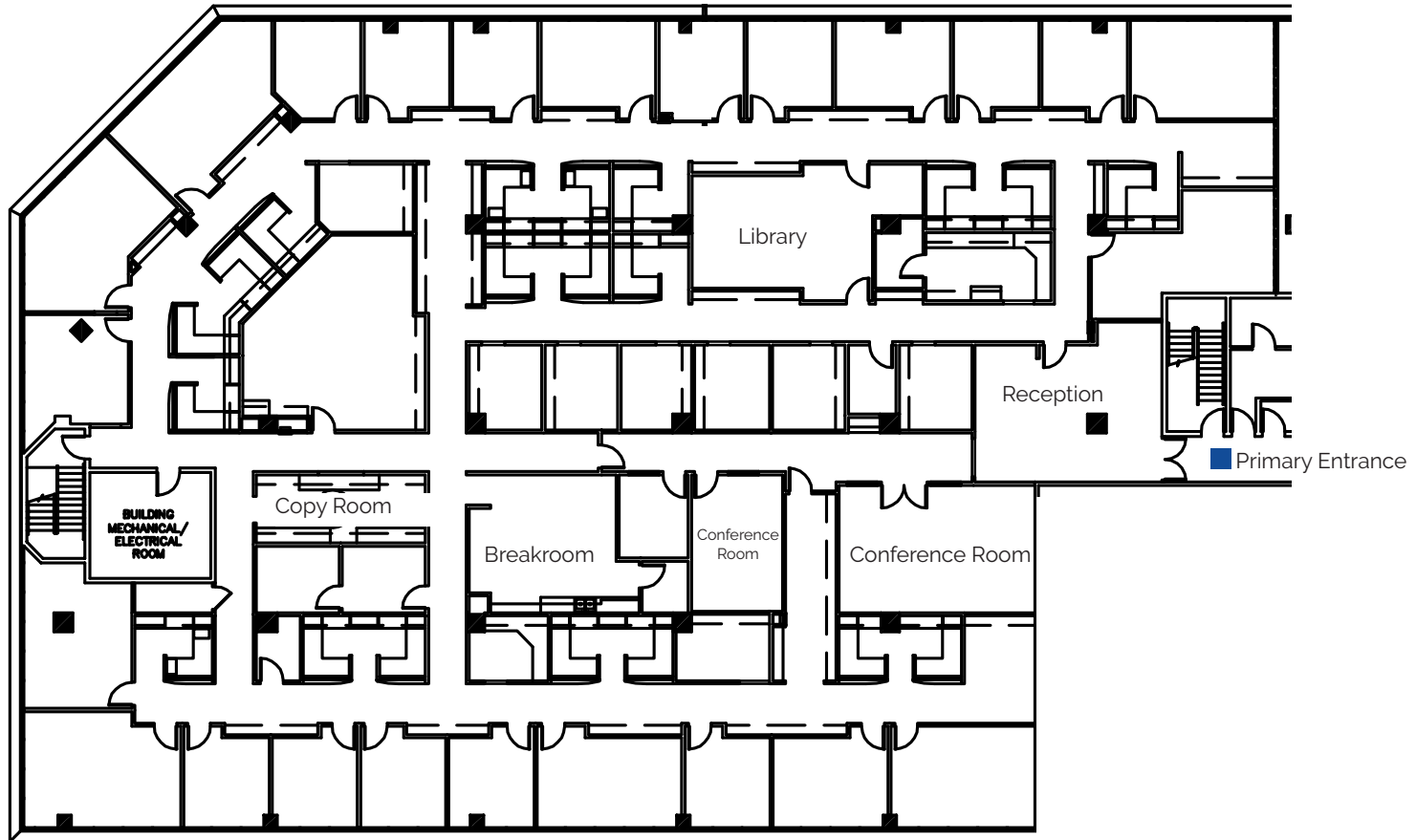
Reanna Becker
(407) 360-9675 | RBecker@trpcrc.com

4th
Floor

Suite 450: 17,431 RSF



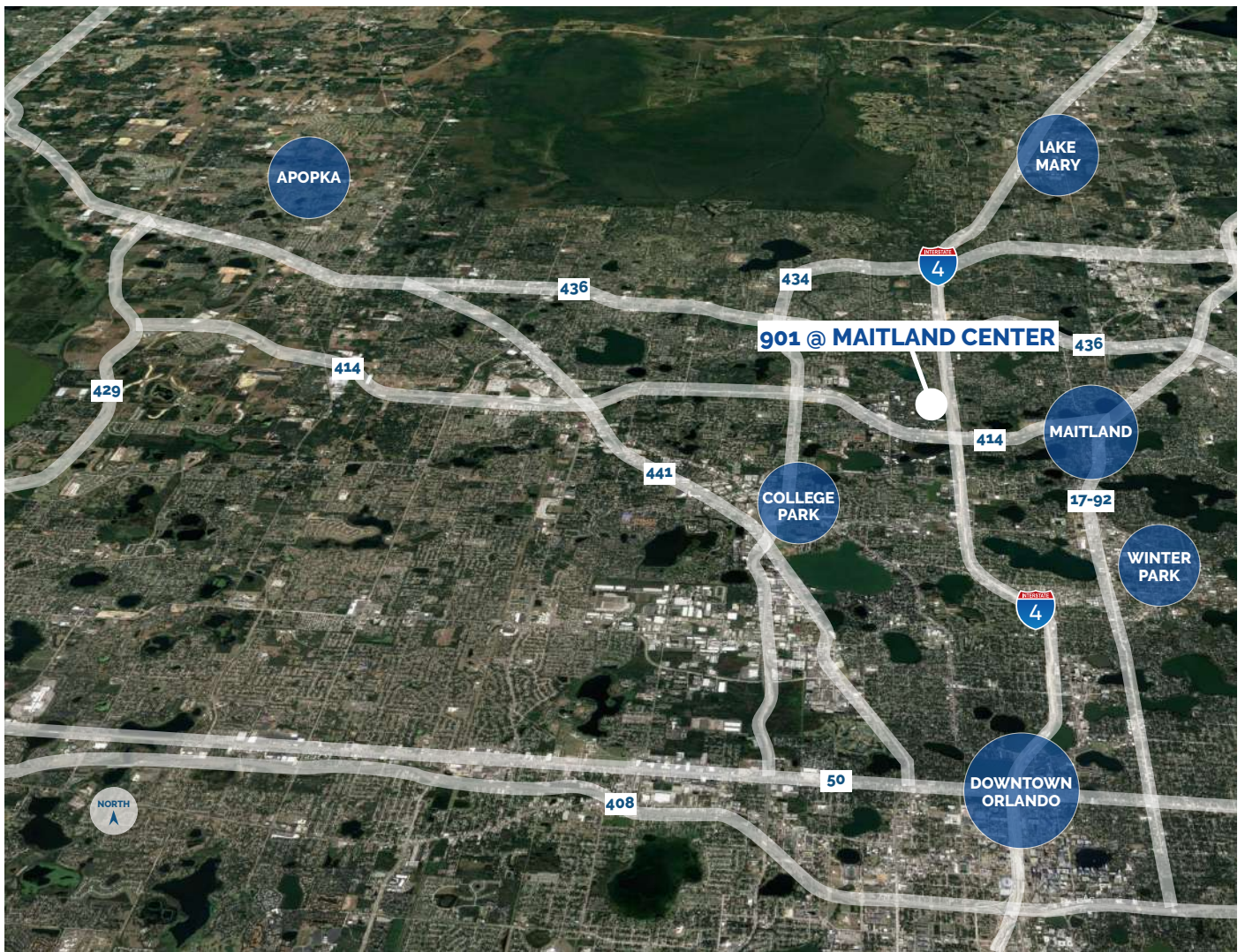
Available 12/1/26



For more information, contact:

Reanna Becker

(407) 360-9675 | RBecker@trpcre.com



LOCATION HIGHLIGHTS

Well-positioned within Maitland Center Office Park, one of Orlando's largest office submarkets

Conveniently less than a half mile from I-4 & providing easy access to Downtown Orlando

Close to business hotels, restaurants, retail and the RDV Sportsplex

Ideally located near Central Florida's top executive housing market & the following established neighborhoods:

- Maitland: 3-Miles
- Winter Park: 5-Miles
- College Park: 7-Miles
- Downtown: 8-Miles
- Lake Mary: 12-Miles

For more information, contact:

Reanna Becker
 (407) 360-9675 | RBecker@trpre.com