

CO-WORKING SPACE FOR LEASE

11675 Ridgeline Drive
Colorado Springs, CO 80921

PROPERTY SPECIFICATIONS

 **LOCATION:** 11675 Ridgeline Dr.
Colorado Springs, CO 80921

 **AVAILABLE FOR LEASE:** 10 SF - 500 SF

 **LEASE RATE:** **Contact Broker**

 **PARKING:** 3.46 acres lot for ample parking

 **ACCESSIBILITY:** Elevator,
Wheelchair Accessible

AMENITIES:

- Large conference room
- Break room
- Coffee bar
- Gym
- Zin Room
- Outdoor patios break areas

ADDITIONAL FEATURES:

- Bright spaces, modern lay-out, modern finishes, has elevator, large conference room, training room, breakroom, gym, cubicles, and more.
- Easy access to to 1-25 and the Powers Corridor, near shops and restaurants, etc.
- Has 3.46 acres lot allowing for ample employee parking

JASON CASTRO
President

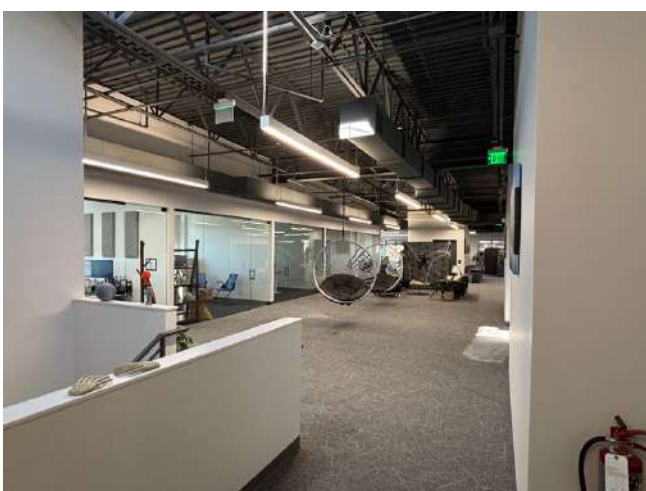
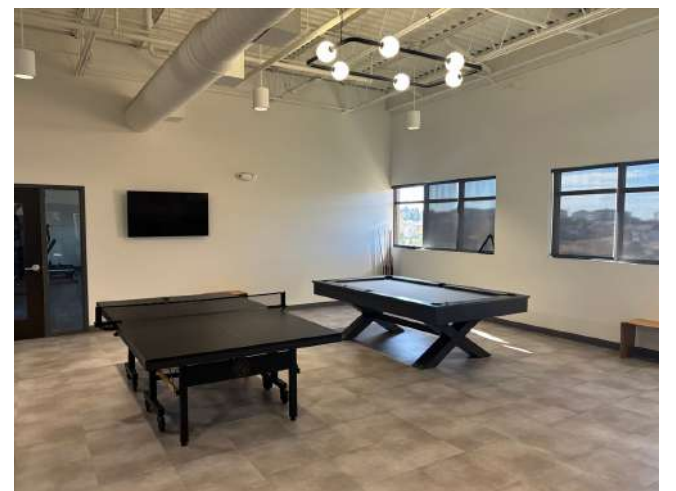
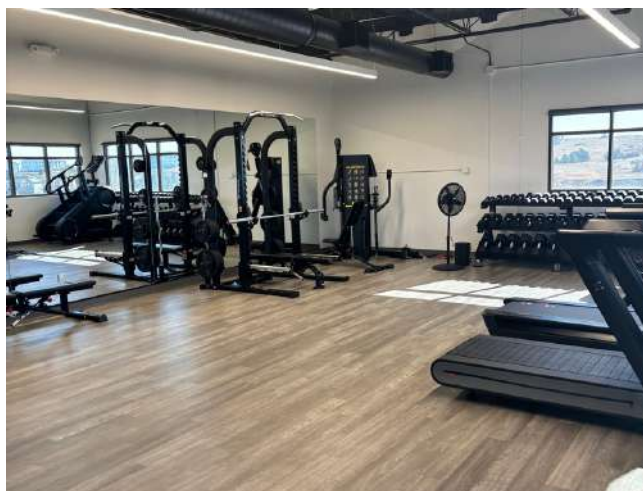
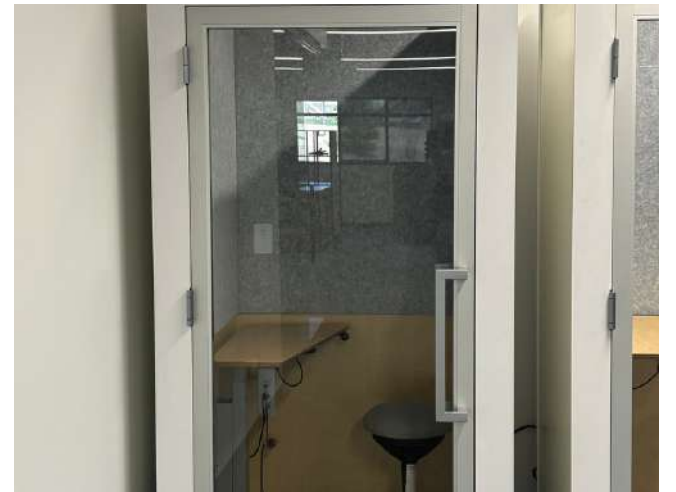
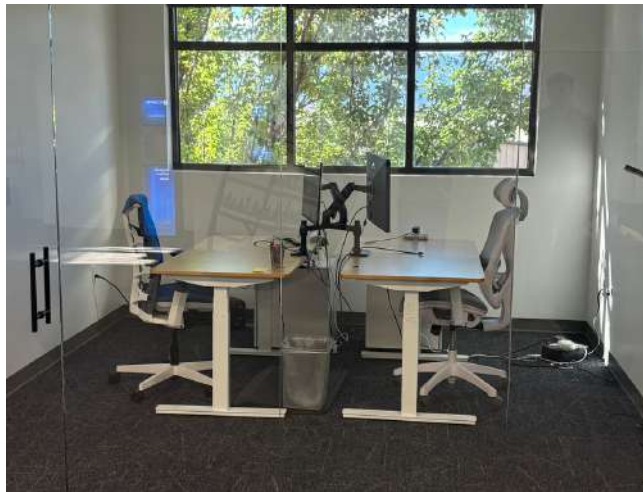


jason@peakcp.net
719.227.9987

CO-WORKING SPACE FOR LEASE

11675 Ridgeline Drive
Colorado Springs, CO 80921

PHOTOS



The particulars, details and visuals shown herein are intended to give a general idea of the property. As such, they are not to be relied upon as statements of fact



2727 N. Cascade Avenue,
Suite 127, Colorado Springs, CO 80907

719.227.9987

www.peakcp.net

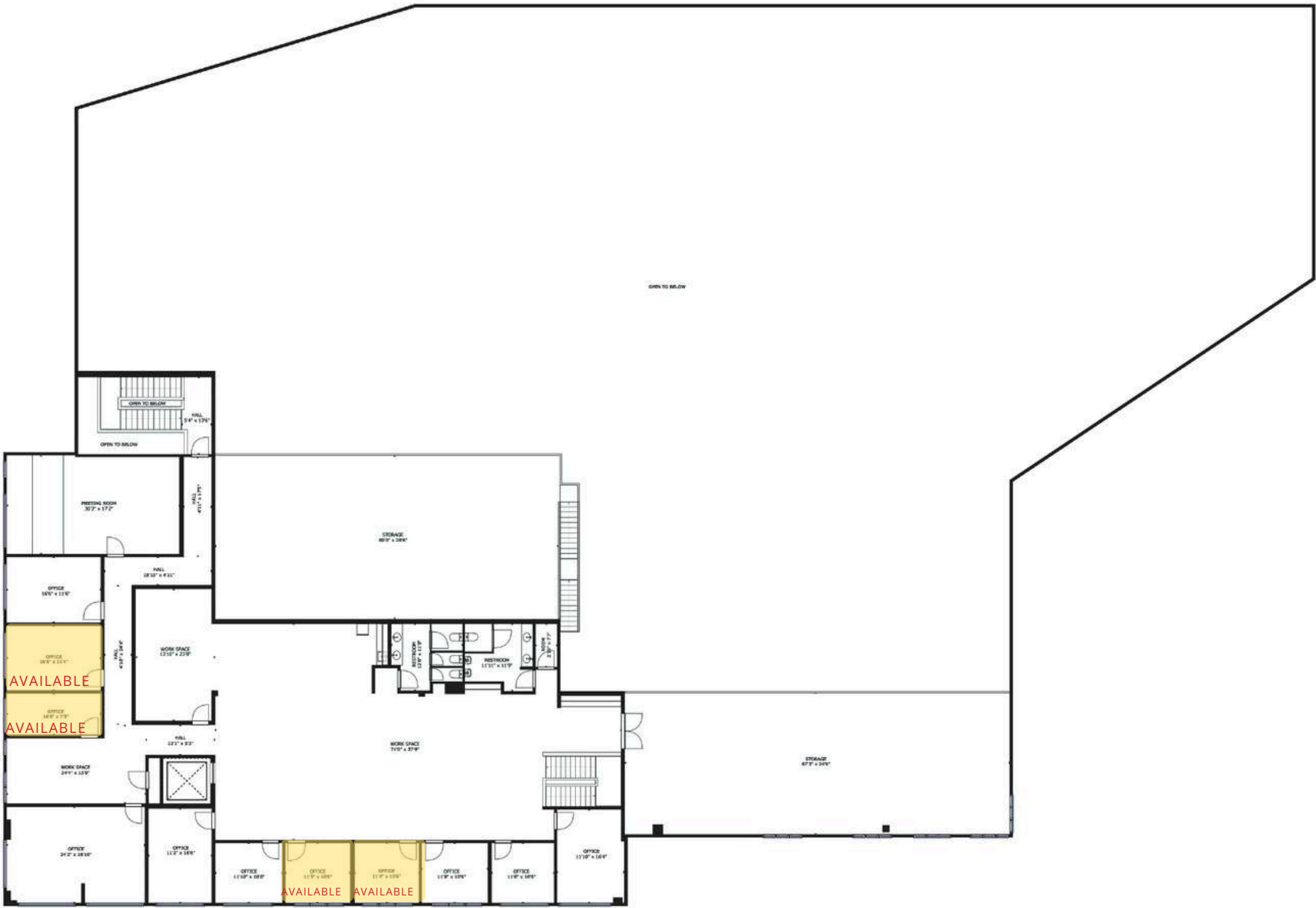
Peak Commercial Properties believes information contained herein, while not guaranteed, is from sources they believe reliable. Price, terms, and information are subject to change without notice.

CO-WORKING SPACE
FOR LEASE

11675 Ridgeline Drive
Colorado Springs, CO 80921

FLOOR PLAN

SECOND FLOOR



The particulars, details and visuals shown herein are intended to give a general idea of the property. As such, they are not to be relied upon as statements of fact



2727 N. Cascade Avenue,
Suite 127, Colorado Springs, CO 80907

719.227.9987

www.peakcp.net

Peak Commercial Properties believes information contained herein, while not guaranteed, is from sources they believe reliable. `Price, terms, and information are subject to change without notice.

CO-WORKING SPACE
FOR LEASE

11675 Ridgeline Drive
Colorado Springs, CO 80921

AERIAL



The particulars, details and visuals shown herein are intended to give a general idea of the property. As such, they are not to be relied upon as statements of fact



2727 N. Cascade Avenue,
Suite 127, Colorado Springs, CO 80907

719.227.9987

www.peakcp.net

Peak Commercial Properties believes information contained herein, while not guaranteed, is from sources they believe reliable. `Price, terms, and information are subject to change without notice.