

# FOR LEASE

0.39 AC FENCED  
IN LAYDOWN YARD

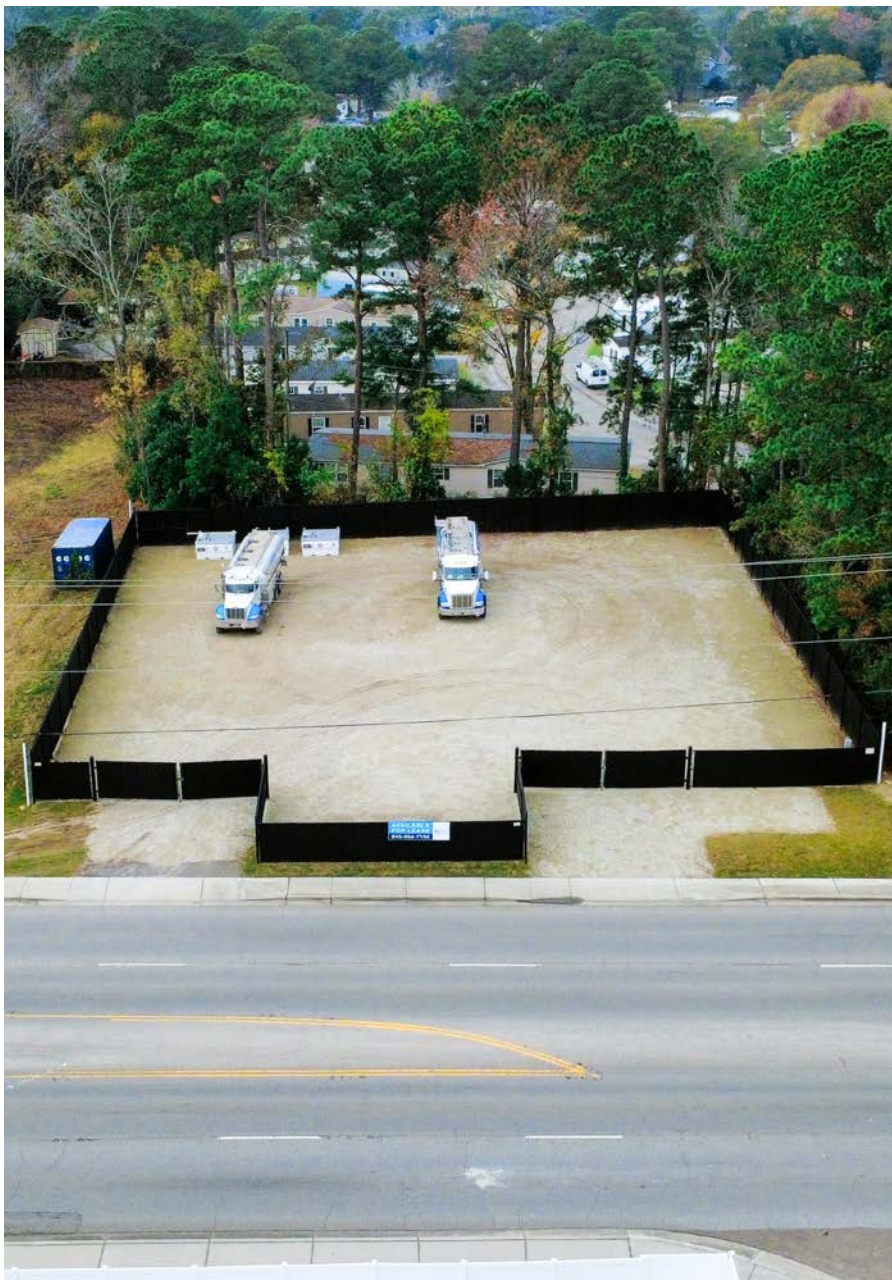


5867 N RHETT AVE, HANAHAN, SC 29410

**Harbor**  
COMMERCIAL PARTNERS



5867 N Rhett Ave, Hanahan, SC 29410



## PROPERTY HIGHLIGHTS

Asking \$3,000 a month NNN for roughly 0.4 acres of fully secured, fenced-in storage yard available for Lease on N Rhett Avenue. Ideal for contractors or service vehicle parking. Property is graveled with immediate access to I-526 and located around the corner from the North Charleston Port.

## PROPERTY SPECS

LEASE RATE	\$3,500/MONTH NNN
------------	-------------------

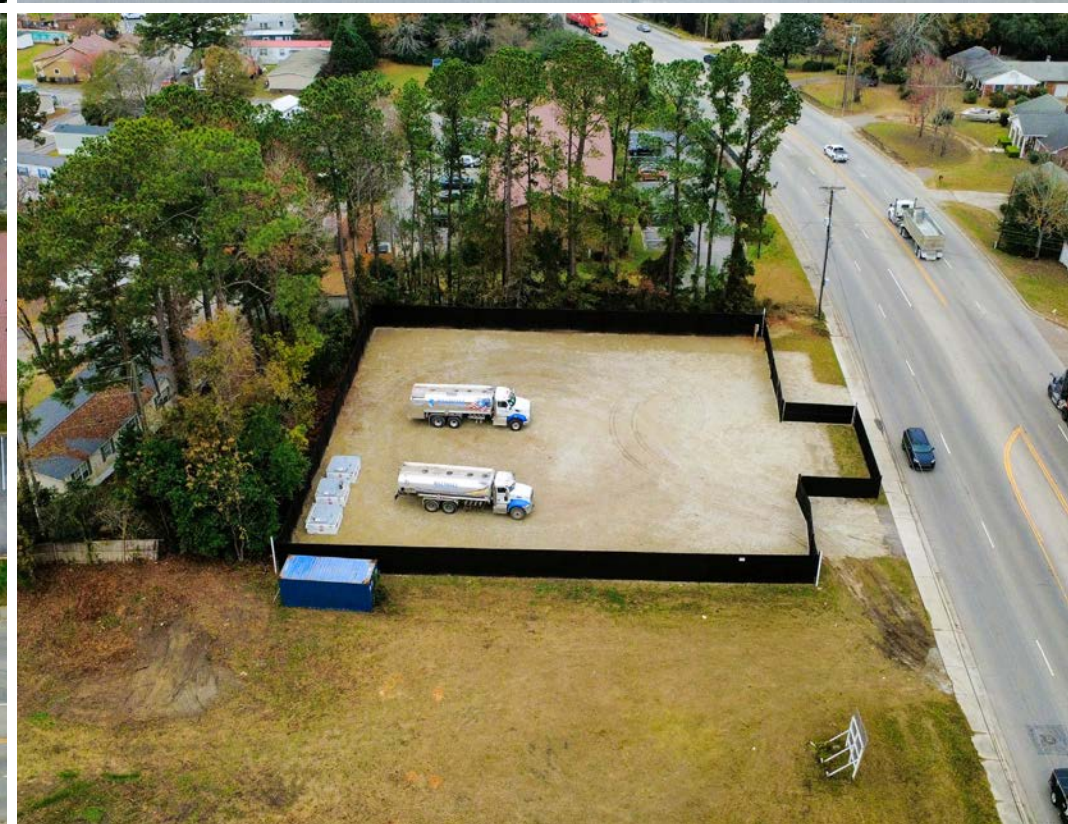
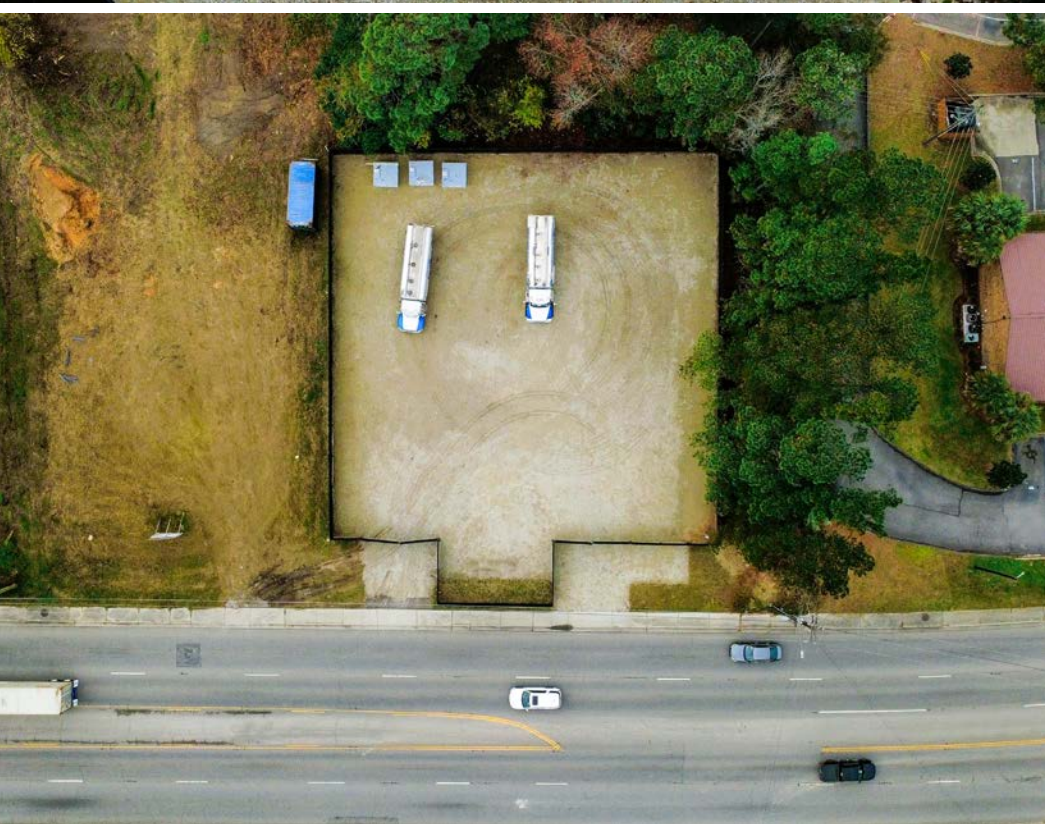
PARCEL ID	266-05-02-063
-----------	---------------

COUNTY	BERKELEY
--------	----------

LOT SIZE	0.39 ACRES
----------	------------



5867 N Rhett Ave, Hanahan, SC 29410





## LOCATION

5837 N Rhett Ave, Hanahan, SC 29410

SUMMERVILLE

INTERSTATE  
26

GOOSE  
CREEK

HANAHAN

NORTH  
CHARLESTON

DANIEL  
ISLAND

WEST ASHLEY

MT PLEASANT

CHARLESTON



5867 N RHETT AVE  
HANAHAN, SC 29410





## CONTACTS:

Crawford Riddle  
Associate  
+1.864.423.4973  
crawford.riddle@

harborcommercialpartners.com

Tradd Varner, SIOR  
Partner  
+1.843.532.1684  
tradd.varner@

harborcommercialpartners.com

Todd Garrett, CCIM, SIOR  
Managing Partner  
+1.843.408.8846  
todd.garrett@

harborcommercialpartners.com

**Harbor**  
COMMERCIAL PARTNERS

harborcommercialpartners.com