

# PLAZACORP

Developing Reimagined Places

## 211 E. Water Street

Kalamazoo, MI



## FOR LEASE

### Downtown Kalamazoo Commercial Opportunities

**PLAZACORP**  
Developing Reimagined Places

200 West Michigan Avenue, Suite 201  
Kalamazoo, MI 49007  
plazacorp.net

**Leasing Contacts**

269.383.5775

# 211 E. Water Street

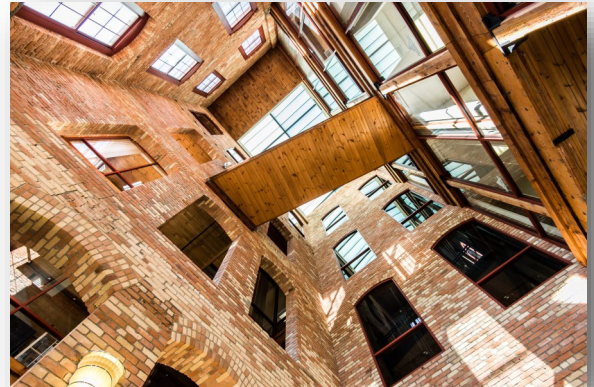
Kalamazoo, MI

## THE GLOBE BUILDING

Overlooking the Arcadia Creek Festival Site & offering views of downtown Kalamazoo, this is the developer's first downtown project.

This downtown location is within an easy walk to a number of Kalamazoo's best-loved restaurants, including Shakespeare's Pub, Bell's Eccentric Café, Maru and HopCat. The building offers rare onsite parking.

The Globe Building underwent a complete renovation that carved out a dramatic light-filled atrium featuring a two-story restaurant. The developer saved the original structural timbers and refinished the brick, creating a warm feel throughout. Windows on all four sides of the building bring in natural light and provide views of downtown's changing skyline.



### STATS



Suite 200A



Suite 213M



Suite 301



### SIZE

6,725 SF

8,186 SF

3,424 SF



### RENT

\$18.00 PSF NNN

\$18.00 PSF NNN

\$18.00 PSF NNN



200 West Michigan Avenue, Suite 201  
Kalamazoo, MI 49007  
plazacorp.net

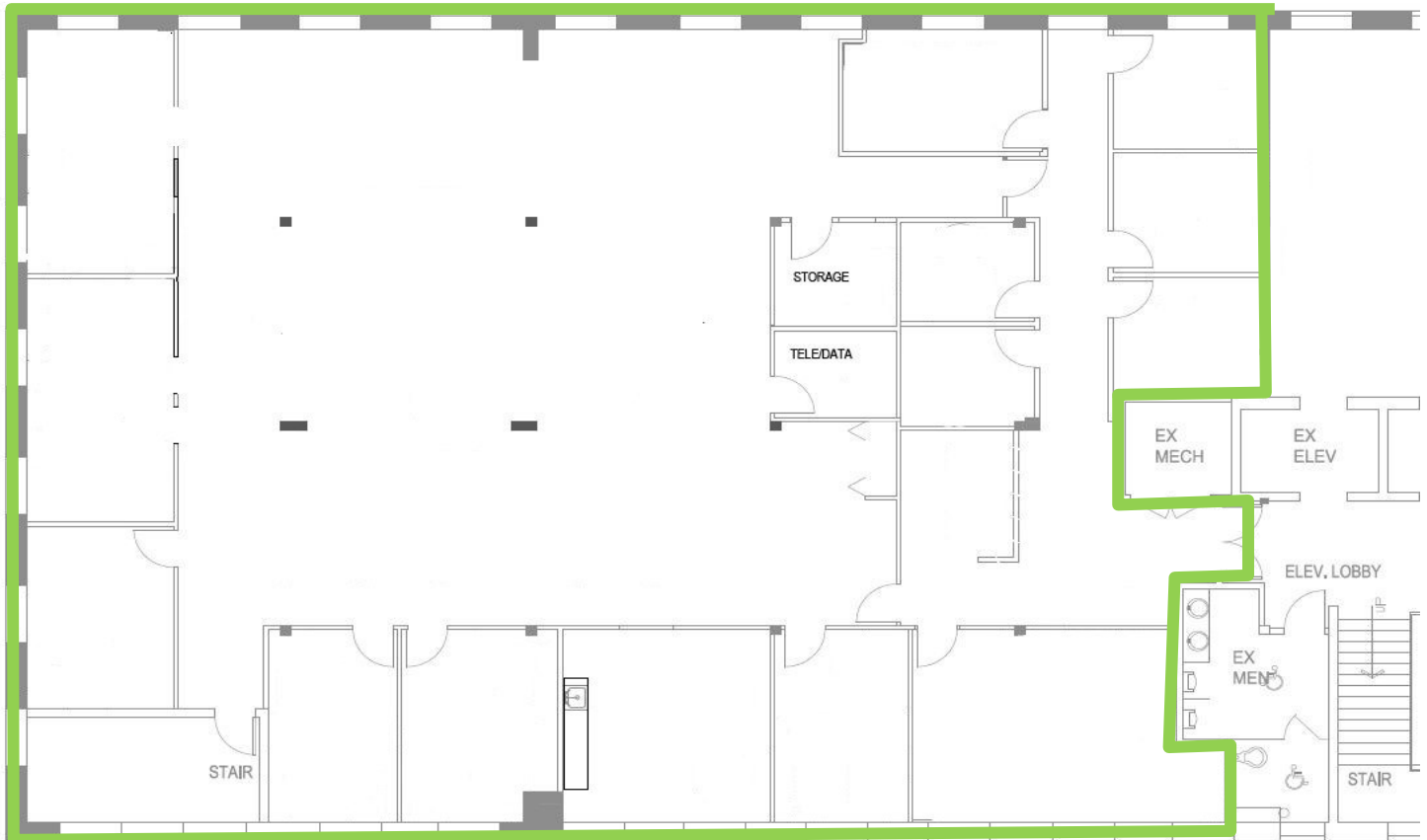
### Leasing Contacts

269.383.5775

# 211 E. Water Street

Kalamazoo, MI

## Spacious Office



Suite 200A



6,725 SF



RENT \$18.00 PSF NNN

**PLAZACORP**  
Developing Reimagined Places

200 West Michigan Avenue, Suite 201  
Kalamazoo, MI 49007  
plazacorp.net

### Leasing Contacts

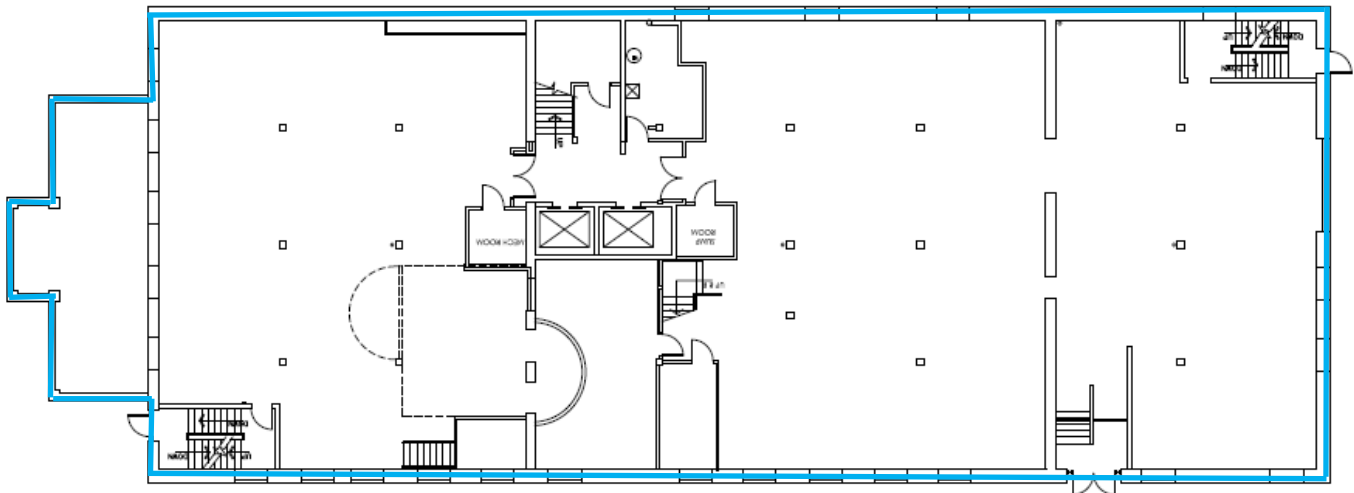
269.383.5775

# 211 E. Water Street

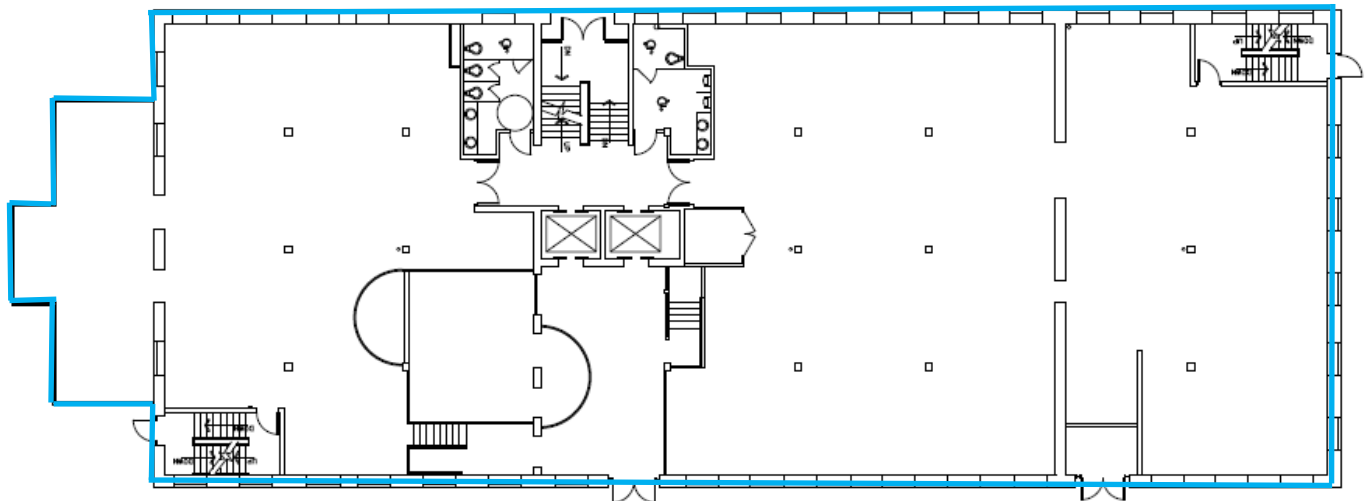
Kalamazoo, MI

## 2-Floor Restaurant

### Suite 213M Basement



### Suite 213M First Floor



Suite 213M



8,186 SF



RENT \$18.00 PSF NNN



200 West Michigan Avenue, Suite 201  
Kalamazoo, MI 49007  
plazacorp.net

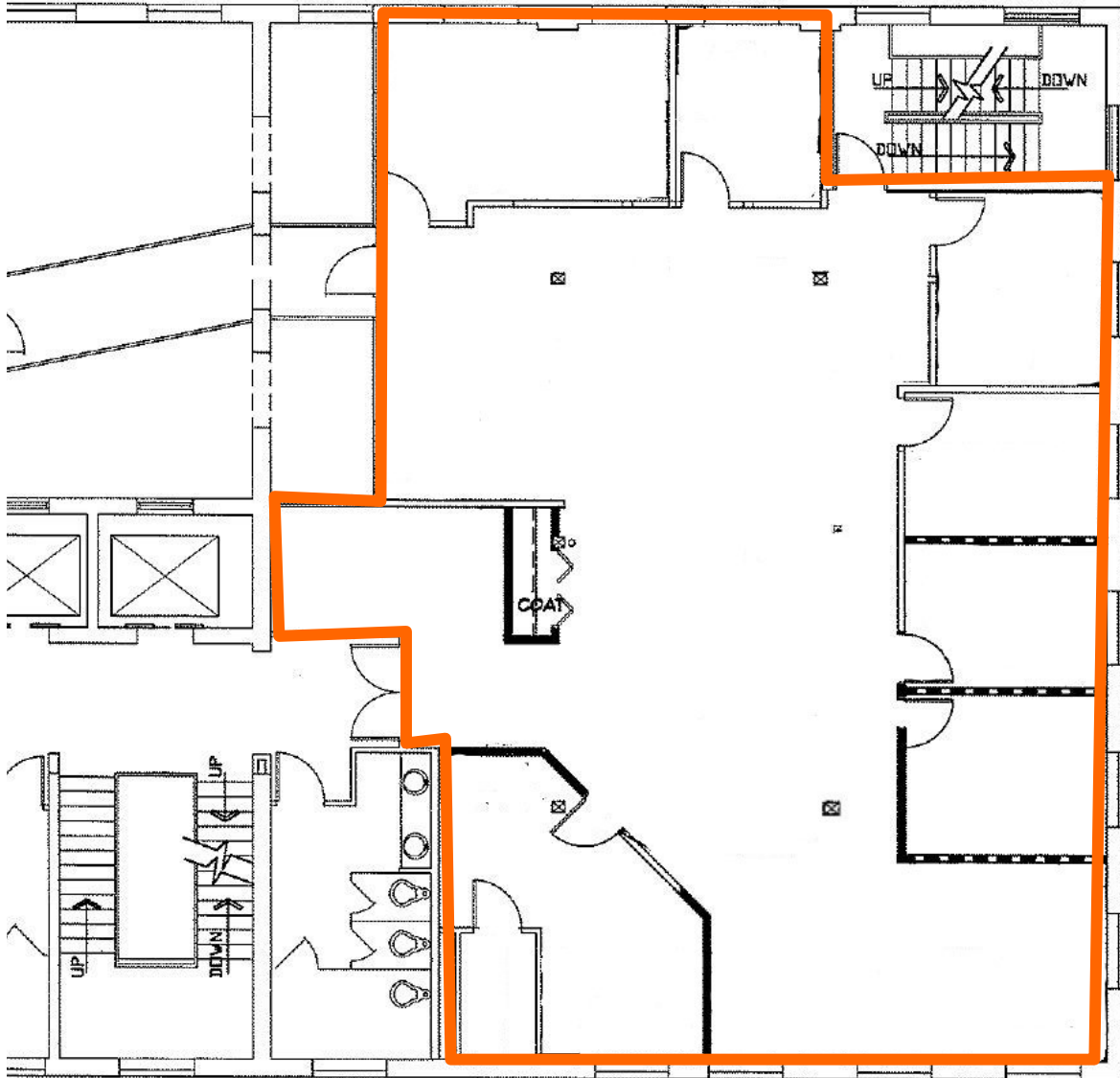
### Leasing Contacts

269.383.5775

# 211 E. Water Street

Kalamazoo, MI

## Loft Office



Suite 301



3,424 SF



RENT \$18.00 PSF NNN

**PLAZACORP**  
Developing Reimagined Places

200 West Michigan Avenue, Suite 201  
Kalamazoo, MI 49007  
plazacorp.net

### Leasing Contacts

269.383.5775

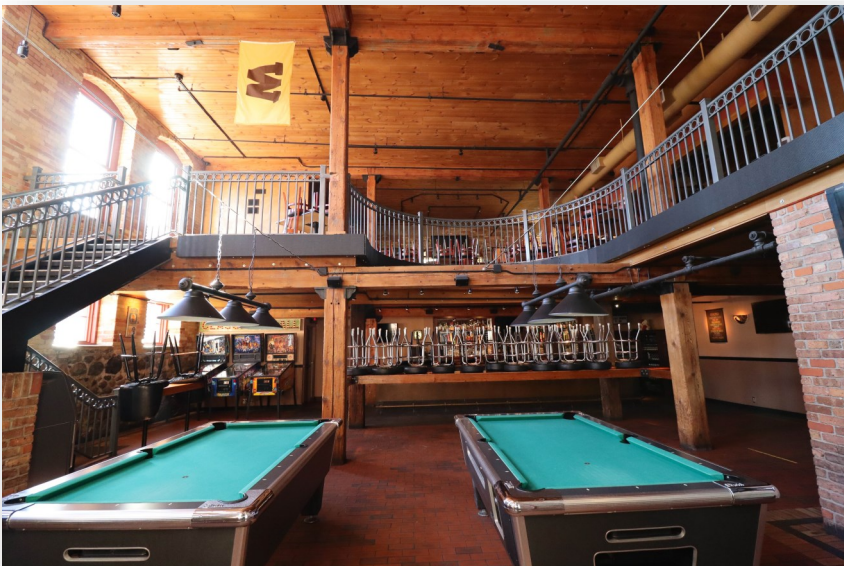
# 211 E. Water Street

Kalamazoo, MI

## ONE OF MICHIGAN'S MOST VIBRANT DOWNTOWNS

### Demographics

|                      | <u>5 Min</u> | <u>10 Min</u> | <u>15 Min</u> |
|----------------------|--------------|---------------|---------------|
| Population           | 23,642       | 95,324        | 157,119       |
| Households           | 9,899        | 39,996        | 68,080        |
| Average HH<br>Income | \$59,536     | \$76,410      | \$85,114      |
| Daytime              | 52,081       | 122,118       | 184,940       |



**PLAZACORP**  
Developing Reimagined Places

200 West Michigan Avenue, Suite 201  
Kalamazoo, MI 49007  
plazacorp.net

### Leasing Contacts

269.383.5775

# 211 E. Water Street

Kalamazoo, MI

## SITE AERIAL



**PLAZACORP**  
Developing Reimagined Places

200 West Michigan Avenue, Suite 201  
Kalamazoo, MI 49007  
plazacorp.net

### Leasing Contacts

269.383.5775