

MEDICAL CONDO FOR SALE

PHYLLIS GREEN MEDICAL CENTER

826 Washington Road, Westminster, MD 21157

Available: 3,189 SF



LISTING DATA

AVAILABLE SF: 3,189 SF

ECONOMIC DATA

SALE PRICE: \$245.00 / SF

CONDO FEES: \$992.15 / Month

TAXES: \$4,957.08 / YR

PROPERTY INFORMATION

COUNTY: Carroll

SUBMARKET: Carroll County

BUILDING DATA

BUILDING SIZE: 80,000 SF

YEAR BUILT: 2007

ZONING: CC/County Use

PROPERTY OVERVIEW

Fully built-out medical condo with private offices, X-ray, MRI room, and large waiting room. Previously a radiology practice.

LOCATION OVERVIEW

Located in the Phyllis Green Medical Center. Within 1 mile from the Carroll County hospital, the heart of Carroll County health care.

PROPERTY HIGHLIGHTS

- 0.7 miles from Carroll Hospital Center
- At grade patient drop-off in the front and back
- Fully ADA Compliant Building
- 100% medical building
- Parking surrounding the building
- Corner Unit

Ben Brooks
Senior Associate
443.741.4053
bbrooks@lee-associates.com

All information furnished regarding property for sale, rental or financing is from sources deemed reliable, but no warranty or representation is made to the accuracy thereof and same is submitted to errors, omissions, change of price, rental or other conditions prior to sale, lease or financing or withdrawal without notice. No liability of any kind is to be imposed on the broker herein.

OFFICE FOR SALE PHYLLIS GREEN MEDICAL CENTER

826 Washington Road, Westminster, MD 21157

Available: 3,189 SF

LEE & ASSOCIATES
COMMERCIAL REAL ESTATE SERVICES



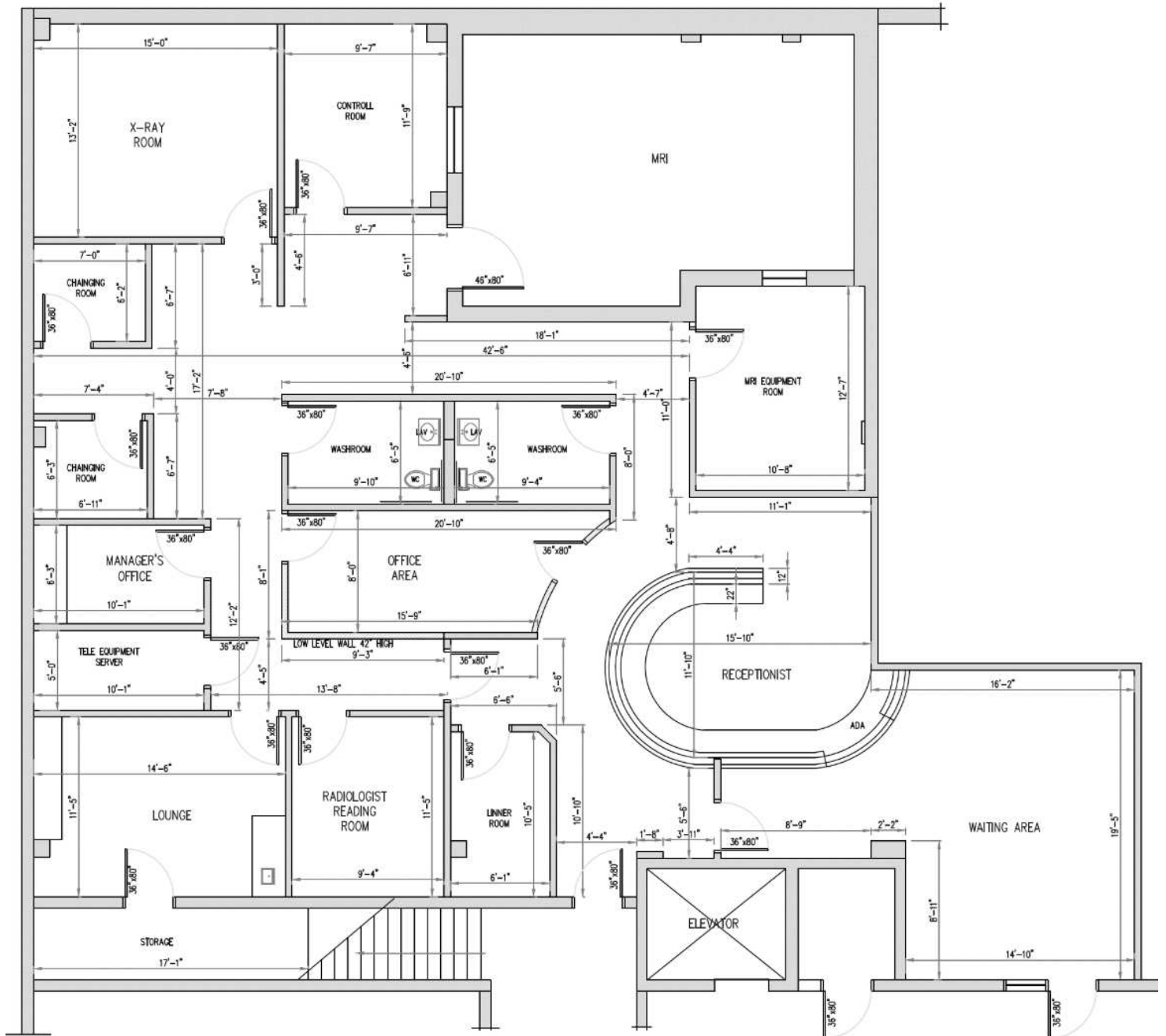
Ben Brooks
Senior Associate
443.741.4053
bbrooks@lee-associates.com

All information furnished regarding property for sale, rental or financing is from sources deemed reliable, but no warranty or representation is made to the accuracy thereof and same is submitted to errors, omissions, change of price, rental or other conditions prior to sale, lease or financing or withdrawal without notice. No liability of any kind is to be imposed on the broker herein.

MEDICAL CONDO FOR SALE PHYLLIS GREEN MEDICAL CENTER

826 Washington Road, Westminster, MD 21157

Available: 3,189 SF



Ben Brooks
Senior Associate
443.741.4053
bbrooks@lee-associates.com

All information furnished regarding property for sale, rental or financing is from sources deemed reliable, but no warranty or representation is made to the accuracy thereof and same is submitted to errors, omissions, change of price, rental or other conditions prior to sale, lease or financing or withdrawal without notice. No liability of any kind is to be imposed on the broker herein.

OFFICE FOR SALE
PHYLLIS GREEN MEDICAL CENTER

826 Washington Road, Westminster, MD 21157

Available: 3,189 SF



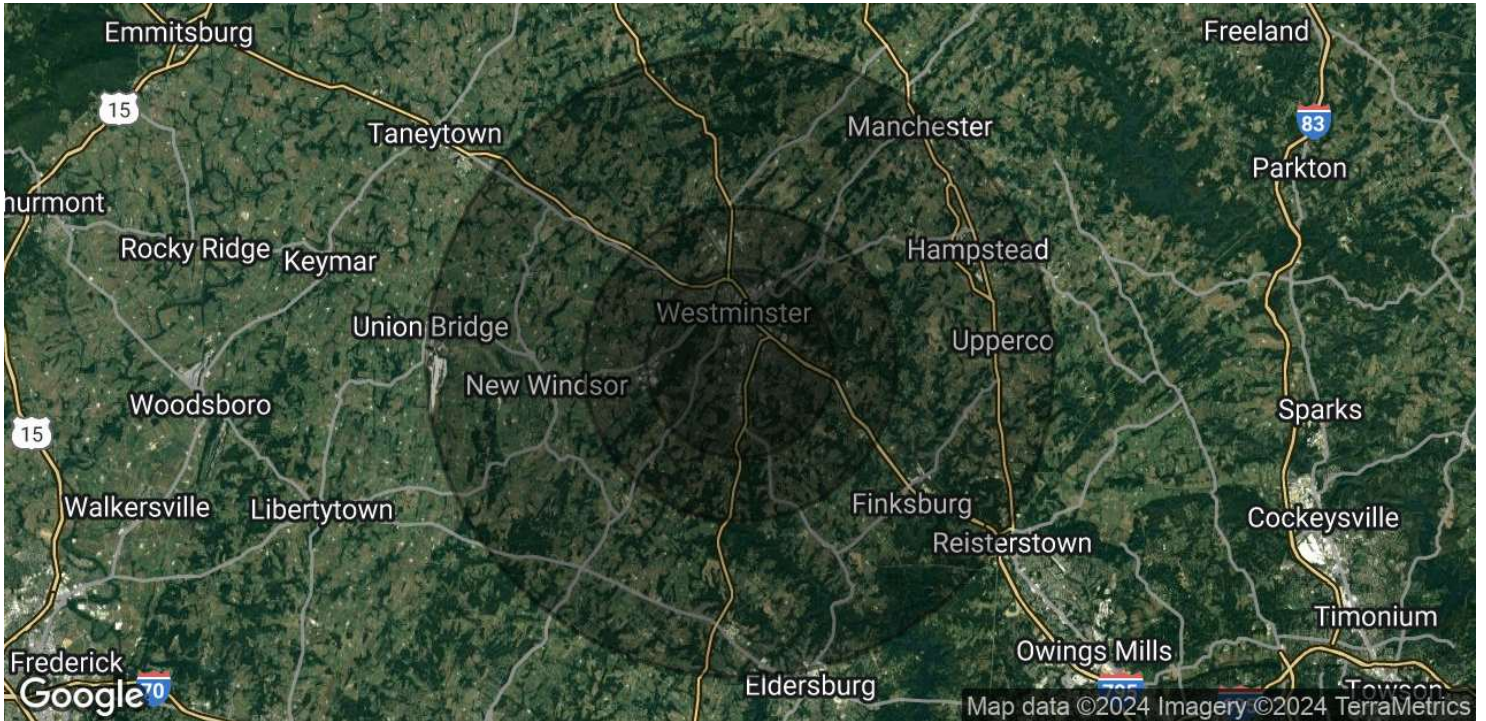
Ben Brooks
Senior Associate
443.741.4053
bbrooks@lee-associates.com

All information furnished regarding property for sale, rental or financing is from sources deemed reliable, but no warranty or representation is made to the accuracy thereof and same is submitted to errors, omissions, change of price, rental or other conditions prior to sale, lease or financing or withdrawal without notice. No liability of any kind is to be imposed on the broker herein.

MEDICAL CONDO FOR SALE PHYLLIS GREEN MEDICAL CENTER

826 Washington Road, Westminster, MD 21157

Available: 3,189 SF



POPULATION

	3 MILES	5 MILES	10 MILES
Total Population	32,643	49,676	112,914
Average Age	41	42	42
Average Age (Male)	39	40	41
Average Age (Female)	43	43	44

HOUSEHOLDS & INCOME

	3 MILES	5 MILES	10 MILES
Total Households	12,334	18,528	41,889
# of Persons per HH	2.6	2.7	2.7
Average HH Income	\$112,883	\$126,753	\$141,409
Average House Value	\$416,392	\$453,189	\$498,467

Demographics data derived from AlphaMap

Ben Brooks
Senior Associate
443.741.4053
bbrooks@lee-associates.com

All information furnished regarding property for sale, rental or financing is from sources deemed reliable, but no warranty or representation is made to the accuracy thereof and same is submitted to errors, omissions, change of price, rental or other conditions prior to sale, lease or financing or withdrawal without notice. No liability of any kind is to be imposed on the broker herein.