

STATION LOFT WORKS

Multi-Tenant Office Investment

Purchase Price: \$2,250,000

12461 Veterans Memorial Hwy. Douglasville, GA



Josh Wolfort

**Vice President of Leasing &
Acquisitions**

W: 404-841-9665 x 104
M: 404-805-1415
jwolfort@conecommercial.com

Christian Fulbright

**Vice President of Leasing &
Acquisitions**

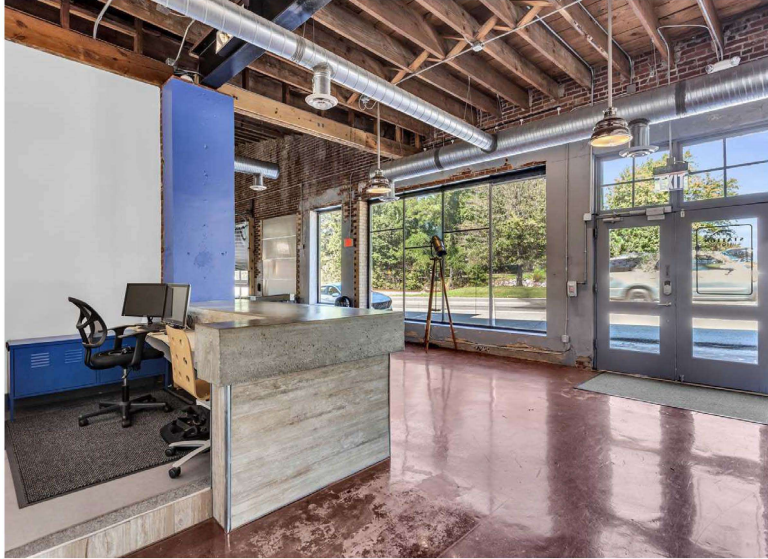
W: 404-841-9665 x 109
M: 770-715-6292
cfulbright@conecommercial.com



Information contained herein may have been provided by the seller, landlord or other outside sources. While deemed reliable, it may be estimated, projected, limited in scope and is subject to change or inaccuracies. Pertinent information should be independently confirmed prior to lease or purchase offer or within an applicable due diligence period.

KEY DETAILS

12461 Veterans Memorial Hwy. Douglasville, GA



PROPERTY SUMMARY

Total SF 15,000 SF

Parcel Size 1.2 Acres

Station Loft Works is a converted Co-Working Office Space in Douglasville, GA serving as a business hub for Professionals, Entrepreneurs, Start-Ups and Small Businesses. The premises has 74 individual offices, with an additional +-1,000 SF separate building, conference rooms, and \$75,000 worth of furniture, that is included with the property. Amenities include, Controlled Access Fenced Lot, High Ceilings, Natural Light, Partitioned Offices, Property Manager, Reception, and Security System.

Located in the Historic Downtown Business District, Station Loft Works is conveniently located within walking distance of the new Town Green and Amphitheater, Chamber of Commerce, City Hall, Douglasville Convention Center, and many restaurants and retail offerings. It is strategically located near I-20, Atlanta and Hartsfield-Jackson International Airport.



Cone Commercial Real Estate

2964 Hardman Ct NE.
Atlanta, GA 30305
(404) 841-9665
info@conecommercial.com

Information contained herein may have been provided by the seller, landlord or other outside sources. While deemed reliable, it may be estimated, projected, limited in scope and is subject to change or inaccuracies. Pertinent information should be independently confirmed prior to lease or purchase offer or within an applicable due diligence period.

PROPERTY PHOTOS

12461 Veterans Memorial Hwy. Douglasville, GA



Cone Commercial Real Estate

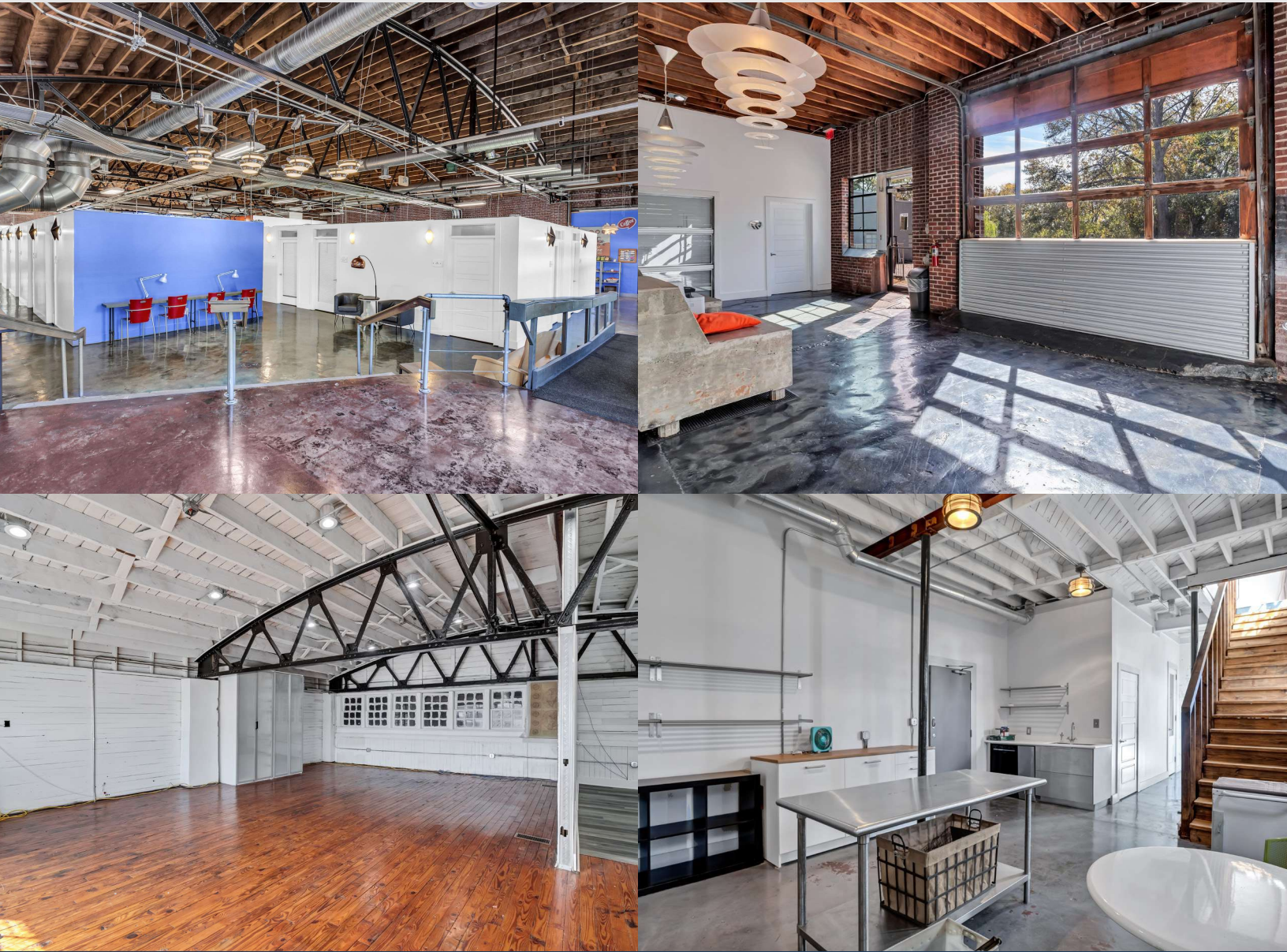
2964 Hardman Ct NE.
Atlanta, GA 30305
(404) 841-9665
info@conecommercial.com



Information contained herein may have been provided by the seller, landlord or other outside sources. While deemed reliable, it may be estimated, projected, limited in scope and is subject to change or inaccuracies. Pertinent information should be independently confirmed prior to lease or purchase offer or within an applicable due diligence period.

PROPERTY PHOTOS

12461 Veterans Memorial Hwy. Douglasville, GA



Cone Commercial Real Estate

2964 Hardman Ct NE.
Atlanta, GA 30305
(404) 841-9665
info@conecommercial.com



Information contained herein may have been provided by the seller, landlord or other outside sources. While deemed reliable, it may be estimated, projected, limited in scope and is subject to change or inaccuracies. Pertinent information should be independently confirmed prior to lease or purchase offer or within an applicable due diligence period.

AREA MAP

12461 Veterans Memorial Hwy. Douglasville, GA



Cone Commercial Real Estate

2964 Hardman Ct NE.
Atlanta, GA 30305
(404) 841-9665
info@conecommercial.com

Information contained herein may have been provided by the seller, landlord or other outside sources. While deemed reliable, it may be estimated, projected, limited in scope and is subject to change or inaccuracies. Pertinent information should be independently confirmed prior to lease or purchase offer or within an applicable due diligence period.