



Sovereign Associates, Inc.

New York City Real Estate Experts
www.sovereignrealestate.com

Principal Broker: **Gregory Healy**
Contact: **917.709.1491**
Email: **ghealy@sovereignrealestate.com**
Receptionist: **646.559.9001**
Email: **info@sovereignrealestate.com**



Morningside Office
3135 Broadway Front A
New York, NY 10027

Hudson Heights Office
710 West 187th St
New York, NY 10033



About the Space

Welcome to 930 Amsterdam, where business dreams thrive in the heart of the city. This expansive commercial space offers abundant room for entrepreneurial endeavors. With its flexible floor plan, modern amenities, and prime location, this space is located around plenty of foot traffic, ensuring maximum visibility and accessibility. Positioned amidst a vibrant neighborhood with a mix of residential and commercial establishments, 930 Amsterdam promises a steady flow of customers.

Property Highlights

- ✓ Located in the 10025 area of Manhattan, New York
- ✓ Public park within walking distance
- ✓ Restaurants and amenities available within walking distance



Nearby Subway Trains
1 Train - 103rd St Station



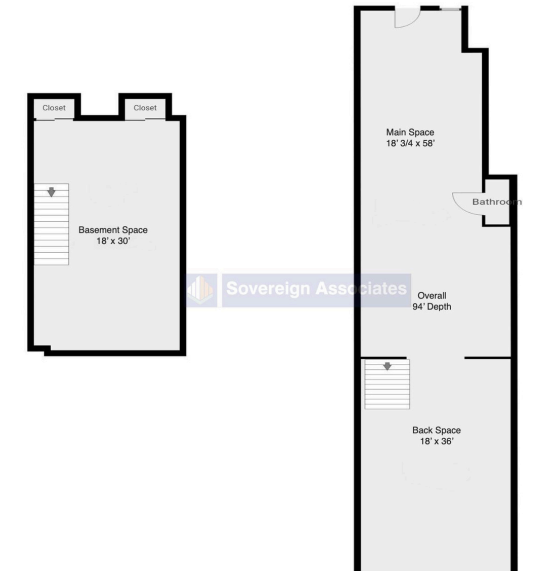
Nearby Hospital - 0.4 Miles
Mount Sinai Morningside Hospital



Square Feet
2,232



Community and Restaurants
High foot traffic



Contact us

Gregory Healy
Principal Broker
917.709.1491
ghealy@sovereignrealestate.com
www.sovereignrealestate.com



*to schedule viewing or any general questions, please scan me!



All information contained herein is based upon the information which we consider reliable, but because it has been supplied by third parties, we cannot represent that it is accurate and complete, and it should not be relied upon as such. The offerings are subject to errors, commissions, changes, including price, or withdrawal without notice. The content is provided without warranties of any kind, whether expressed or implied. Sovereign Associates, Inc. and its agents or employees shall not be held liable to anyone for any errors, commissions, or inaccuracies under any circumstances. You and your advisors should conduct a careful, independent examination of any property to determine to your satisfaction it's suitability to your needs.