

2292-2294 COLE STREET
BIRMINGHAM, MICHIGAN

RETAIL FOR LEASE
7,336 Square Feet Available



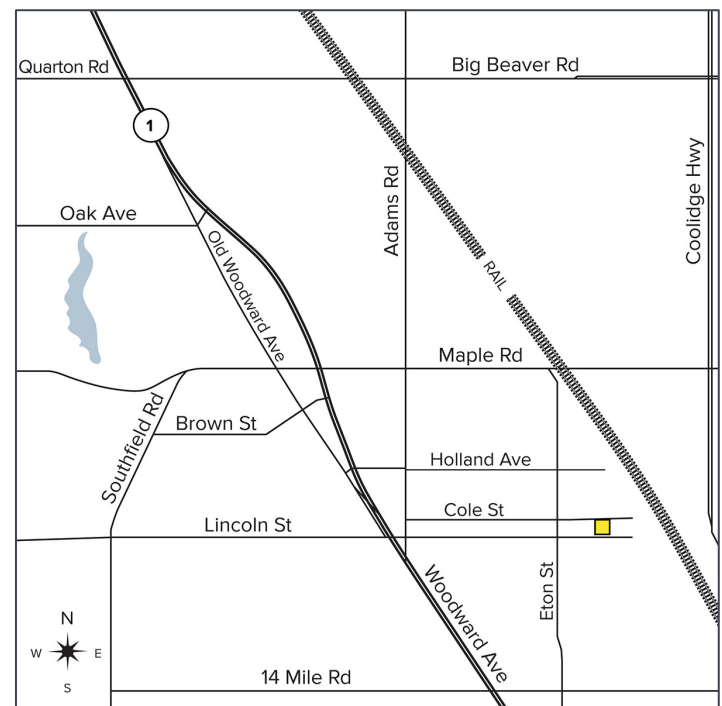
**SIGNATURE
ASSOCIATES**
KNOW SIGNATURE | KNOW RESULTS

RETAIL/OFFICE SPACE



PROPERTY FEATURES

- 7,336 square feet available
- Flexible zoning (MX) allows for variety of uses
- High end interior buildout
- Features open ceilings, full kitchen, overhead doors, building signage
- New roof and parking lot (2022)
- Lease Rate: \$21.00/sq. ft. NNN



For more information, please contact:

DAN MORROW
(248) 799 3144
dmorrow@signatureassociates.com

JOE BANYAI
(248) 948 0108
jbanyai@signatureassociates.com

SIGNATURE ASSOCIATES
One Towne Square, Suite 1200
Southfield, MI 48076
www.signatureassociates.com

2292-2294 Cole Street – Birmingham, Michigan

Retail For Lease

7,336
Square Feet
AVAILABLE

Interior Photos



For more information, please contact:

DAN MORROW
(248) 799 3144
dmorrow@signatureassociates.com

JOE BANYAI
(248) 948 0108
jbanyai@signatureassociates.com

SIGNATURE ASSOCIATES
One Towne Square, Suite 1200
Southfield, MI 48076
www.signatureassociates.com

Interior Photos



For more information, please contact:

DAN MORROW

(248) 799 3144

dmorrow@signatureassociates.com

JOE BANYAI

(248) 948 0108

jbanyai@signatureassociates.com

SIGNATURE ASSOCIATES

One Towne Square, Suite 1200

Southfield, MI 48076

www.signatureassociates.com

2292-2294 Cole Street – Birmingham, Michigan

Retail For Lease

7,336
Square Feet
AVAILABLE

Site Plan



For more information, please contact:

DAN MORROW
(248) 799 3144
dmorrow@signatureassociates.com

JOE BANYAI
(248) 948 0108
jbanyai@signatureassociates.com

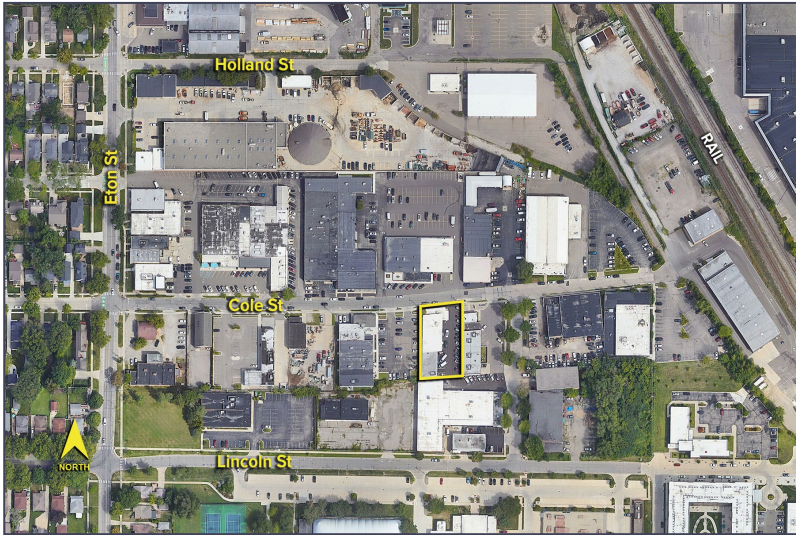
SIGNATURE ASSOCIATES
One Towne Square, Suite 1200
Southfield, MI 48076
www.signatureassociates.com

Information is subject to verification and no liability for errors or omissions is assumed. Price is subject to change and listing withdrawal.

2292-2294 Cole Street – Birmingham, Michigan

Retail For Lease

7,336
Square Feet
AVAILABLE

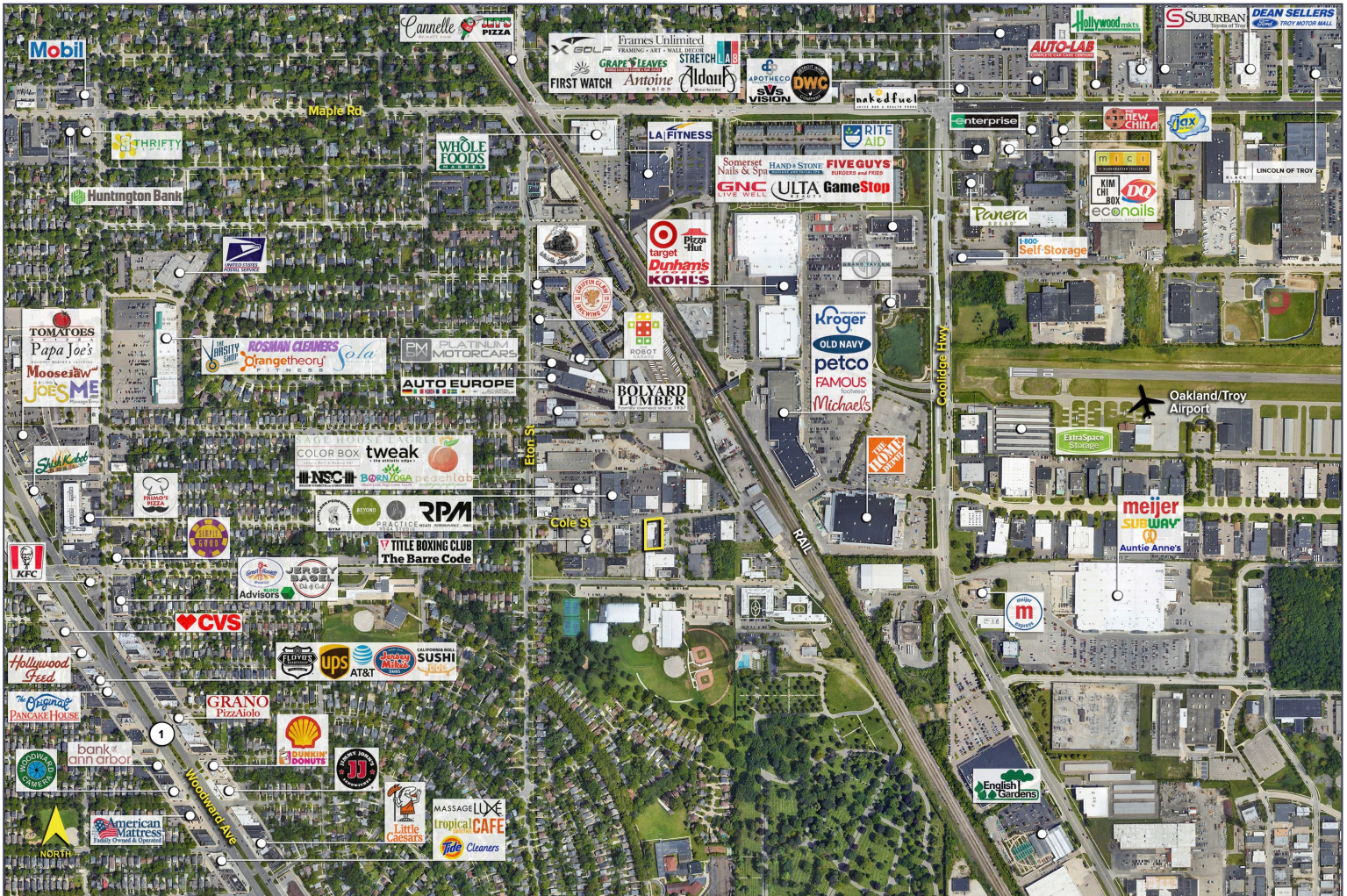


DEMOGRAPHICS

	POPULATION	MED. HH INCOME
1 MILE	12,354	\$122,666
3 MILE	102,741	\$119,212
5 MILE	253,998	\$115,241

TRAFFIC COUNTS (TWO-WAY)

29,247	Coolidge Hwy. N. of 14 Mile Rd.
22,760	14 Mile Rd. W. of Coolidge Hwy.
23,542	14 Mile Rd. E. of Coolidge Hwy.



For more information, please contact:

DAN MORROW
(248) 799 3144
dmorrow@signatureassociates.com

JOE BANYAI
(248) 948 0108
jbanyai@signatureassociates.com

SIGNATURE ASSOCIATES
One Towne Square, Suite 1200
Southfield, MI 48076
www.signatureassociates.com