

210 W Georgia Ave

210 W Georgia Ave, Nampa, ID 83686



Presented by
The TNT Group LLC



Price: \$15.00 /SF/YR

For lease in Nampa, Idaho, this inviting office space spans 1556 square feet and boasts a prime location just off 12th Ave. Ideal for a variety of professional uses including medical, legal, real estate, and insurance, the office features four separate offices, ample room for a conference area, and one ADA-compliant bathroom for accessibility. The owner is open to negotiating terms that may include a Tenant Improvement (TI) allowance, making this an excellent opportunity for establishing or expanding your business in a vibrant community.

210 W Georgia Ave

210 W Georgia Ave, Nampa, ID 83686



Great South Nampa Location
Close to Hospital and other Medical Businesses
Ease access to 12th Ave Rd
Turn-Key Space



Tom Koltes

tom@tntidaho.com

(208) 936-2768 Ext: 302

The TNT Group LLC

270 W Georgia Ave, Suite 100

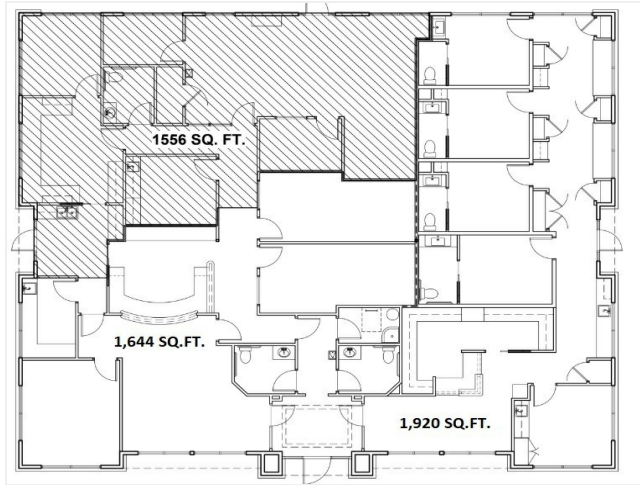
Nampa, ID 83686



210 W Georgia Ave

210 W Georgia Ave, Nampa, ID 83686

210 W Georgia Ave, Nampa, ID 83686



210 Georgia FP Clean (1)

Listing space

1st Floor Ste 130

Space Available	1,556 SF
Rental Rate	\$15.00 /SF/YR
Date Available	30 Days
Service Type	Triple Net (NNN)
Space Type	Relet
Space Use	Office
Lease Term	3 - 5 Years

4 offices, storage room, 1 ADA bathroom, Large conference or common area

210 W Georgia Ave

210 W Georgia Ave, Nampa, ID 83686

Property Photos



20240614_122514



20240614_122426

210 W Georgia Ave

210 W Georgia Ave, Nampa, ID 83686

Property Photos



20240614_122534



20240614_122818

210 W Georgia Ave

210 W Georgia Ave, Nampa, ID 83686

Property Photos



20240614_122747



20240614_123303

210 W Georgia Ave

210 W Georgia Ave, Nampa, ID 83686

Property Photos



Aerial



Building Photo

210 W Georgia Ave

210 W Georgia Ave, Nampa, ID 83686

Property Photos



Building Photo



Building Photo

210 W Georgia Ave

210 W Georgia Ave, Nampa, ID 83686

Property Photos



Building Photo



Building Photo

210 W Georgia Ave

210 W Georgia Ave, Nampa, ID 83686

Location

