



PROMOTIONAL RATE OF \$0.99 PSF FOR THE FIRST SIX (6) MONTHS FOR THREE (3) YEAR LEASE

FOR LEASE

724 S SPRING ST
LOS ANGELES | CA 90014



900 - 5,000 SF
AVAILABLE



Paid Parking
AVAILABLE



1916 Year Built
2022 YEAR REMODEL



70,008 SF
BUILDING SIZE

FOR MORE INFORMATION PLEASE CONTACT:

DAVID MUIR
EXECUTIVE VICE PRESIDENT

P: 213.270.2244

david.muir@daumcommercial.com

CADRE #01210653

CARLOS CASTILLO
ASSOCIATE VICE PRESIDENT

P: 213.270.2263 | M: 213.842.5877

carlos.castillo@daumcommercial.com

CADRE #01451618

Although all information is furnished regarding for sale, rental or financing is from sources deemed reliable, such information has not been verified and no express representation is made nor is any to be implied as to the accuracy thereof, and it is submitted subject to errors, omissions, changes of price, rental or other conditions, prior sale, lease or financing, or withdrawal without notice.


COMMERCIAL REAL ESTATE SERVICES

20,840 SF CREATIVE OFFICES

20,840 SF

OFFICE

FOR LEASE
724 S SPRING ST
LOS ANGELES | CA 90014



PROPERTY DESCRIPTION

20,840 SF Available

PROPERTY HIGHLIGHTS

- Turnkey Creative Offices
- In the Heart of Downtown Los Angeles
- Food Court and High End Residential Adjacent to Site
- Positioned in a Walker's Paradise, Metro and Fwy Less Than a Mile Away
- Exposed high-ceilings, Natural Light and Polished Concrete Floors

DEMOGRAPHICS

1 MILE

5 MILES

10 MILES

Total Households	35,264	441,957	1,313,030
Total Population	50,447	1,252,770	3,578,514
Average HH Income	\$67,429	\$66,013	\$81,863

FOR MORE INFORMATION PLEASE CONTACT:

DAVID MUIR
EXECUTIVE VICE PRESIDENT

P: 213.270.2244
david.muir@daumcommercial.com
CADRE #01210653

CARLOS CASTILLO
ASSOCIATE VICE PRESIDENT

P: 213.270.2263 | M: 213.842.5877
carlos.castillo@daumcommercial.com
CADRE #01451618

Although all information is furnished regarding for sale, rental or financing is from sources deemed reliable, such information has not been verified and no express representation is made nor is any to be implied as to the accuracy thereof, and it is submitted subject to errors, omissions, changes of price, rental or other conditions, prior sale, lease or financing, or withdrawal without notice.



20,840 SF

OFFICE

FOR LEASE
724 S SPRING ST
LOS ANGELES | CA 90014



OFFERING SUMMARY

Lease Rate:	\$1.76 - 2.20 SF/month (Gross)
Building Size:	70,008 SF
Available SF:	911 - 4,537 SF
Number of Units:	16
Year Built:	1915
Zoning:	LAC2
Market:	LA Central

SPACES

LEASE RATE

SPACE SIZE

SPACES	LEASE RATE	SPACE SIZE
301-302	\$1.92 SF/month	2,032 SF
303-304	\$1.96 SF/month	2,505 SF
403	\$2.09 SF/month	911 SF
501-504	\$1.76 SF/month	4,537 SF
703-704	\$1.96 SF/month	2,505 SF
1102-1104	\$2.06 SF/month	3,340 SF
1203-1204	\$1.96 SF/month	2,505 SF
1403	\$2.20 SF/month	911 SF
1404	\$2.20 SF/month	1,594 SF

FOR MORE INFORMATION PLEASE CONTACT:

DAVID MUIR
EXECUTIVE VICE PRESIDENT

P: 213.270.2244
david.muir@daumcommercial.com
CADRE #01210653

CARLOS CASTILLO
ASSOCIATE VICE PRESIDENT

P: 213.270.2263 | M: 213.842.5877
carlos.castillo@daumcommercial.com
CADRE #01451618

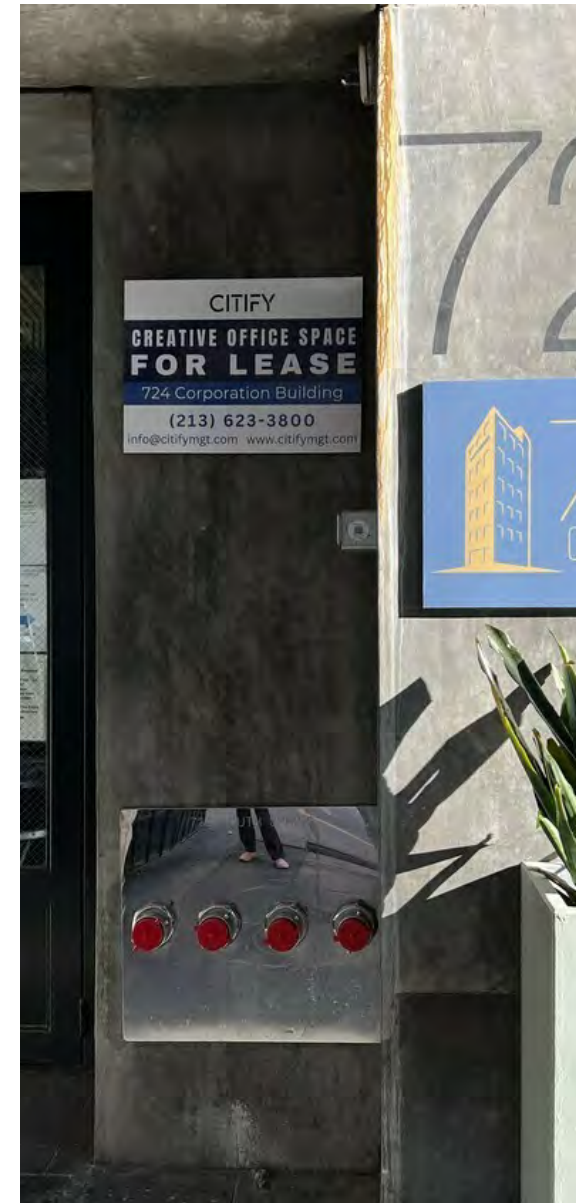
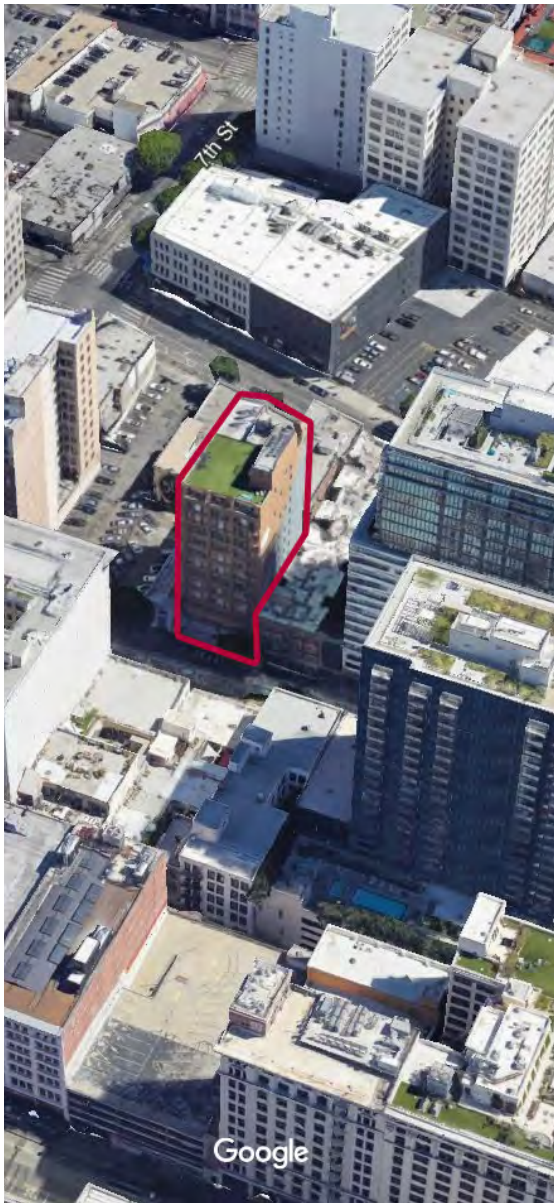
Although all information is furnished regarding for sale, rental or financing is from sources deemed reliable, such information has not been verified and no express representation is made nor is any to be implied as to the accuracy thereof, and it is submitted subject to errors, omissions, changes of price, rental or other conditions, prior sale, lease or financing, or withdrawal without notice.



20,840 SF

OFFICE

FOR LEASE
724 S SPRING ST
LOS ANGELES | CA 90014



FOR MORE INFORMATION PLEASE CONTACT:

DAVID MUIR
EXECUTIVE VICE PRESIDENT

P: 213.270.2244
david.muir@daumcommercial.com
CADRE #01210653

CARLOS CASTILLO
ASSOCIATE VICE PRESIDENT

P: 213.270.2263 | M: 213.842.5877
carlos.castillo@daumcommercial.com
CADRE #01451618

Although all information is furnished regarding for sale, rental or financing is from sources deemed reliable, such information has not been verified and no express representation is made nor is any to be implied as to the accuracy thereof, and it is submitted subject to errors, omissions, changes of price, rental or other conditions, prior sale, lease or financing, or withdrawal without notice.



20,840 SF

OFFICE

FOR LEASE
724 S SPRING ST
LOS ANGELES | CA 90014



Map data ©2024 Google Imagery ©2024 Airbus, Data CSUMB SFML, CA OPC, Landsat / Copernicus, Maxar Technologies

FOR MORE INFORMATION PLEASE CONTACT:

DAVID MUIR
EXECUTIVE VICE PRESIDENT

P: 213.270.2244
david.muir@daumcommercial.com
CADRE #01210653

CARLOS CASTILLO
ASSOCIATE VICE PRESIDENT

P: 213.270.2263 | M: 213.842.5877
carlos.castillo@daumcommercial.com
CADRE #01451618

Although all information is furnished regarding for sale, rental or financing is from sources deemed reliable, such information has not been verified and no express representation is made nor is any to be implied as to the accuracy thereof, and it is submitted subject to errors, omissions, changes of price, rental or other conditions, prior sale, lease or financing, or withdrawal without notice.



20,840 SF

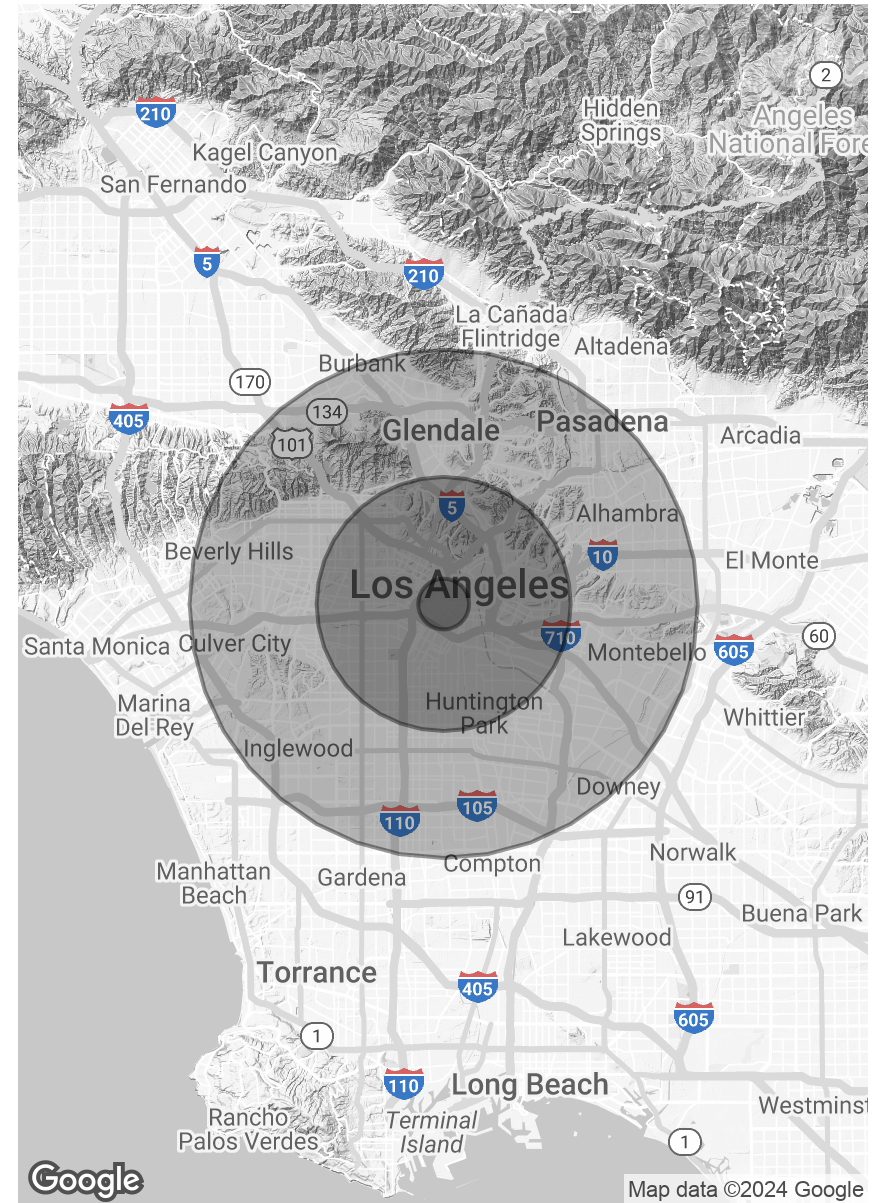
OFFICE

FOR LEASE
724 S SPRING ST
LOS ANGELES | CA 90014

POPULATION	1 MILE	5 MILES	10 MILES
Total Population	50,447	1,252,770	3,578,514
Average Age	40.0	34.2	36.0
Average Age (Male)	39.0	33.3	34.9
Average Age (Female)	40.0	35.4	37.2

HOUSEHOLDS & INCOME	1 MILE	5 MILES	10 MILES
Total Households	35,264	441,957	1,313,030
# of Persons per HH	1.4	2.8	2.7
Average HH Income	\$67,429	\$66,013	\$81,863
Average House Value	\$278,939	\$484,801	\$601,464

2020 American Community Survey (ACS)



FOR MORE INFORMATION PLEASE CONTACT:

DAVID MUIR
EXECUTIVE VICE PRESIDENT

P: 213.270.2244
david.muir@daumcommercial.com
CADRE #01210653

CARLOS CASTILLO
ASSOCIATE VICE PRESIDENT

P: 213.270.2263 | M: 213.842.5877
carlos.castillo@daumcommercial.com
CADRE #01451618

Although all information is furnished regarding for sale, rental or financing is from sources deemed reliable, such information has not been verified and no express representation is made nor is any to be implied as to the accuracy thereof, and it is submitted subject to errors, omissions, changes of price, rental or other conditions, prior sale, lease or financing, or withdrawal without notice.

