

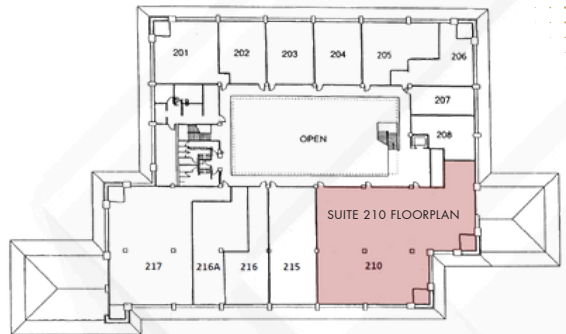


FOR LEASE HAWAII KAI TOWNE CENTER



📍 6700 KALANIANA'OLE HWY, SUITE 210, HONOLULU, HI 96825

Executive Plaza, located at 6700 Kalaniana'ole Hwy within the Hawaii Kai Towne Center, offers a premier business address in one of Honolulu's most upscale neighborhoods. The building features flexible office spaces with open layouts, including Suite 210, making it ideal for a wide range of professional tenants. With sweeping ocean and mountain views, Executive Plaza provides an attractive setting for businesses. Tenants and their clients also benefit from ample customer parking, 24/7 security, and the steady foot traffic generated by the surrounding retail and dining establishments.



PROPERTY DETAILS



SIZE
4,962 SF



BASE RENT
\$3.50 - \$3.75/SF/MO



CAM
\$2.37/SF/MO (est. 2025)



SCENIC OCEAN AND MOUNTAIN VIEWS

PRIME HAWAII KAI LOCATION

CONVENIENT ACCESS

The project hosts a diverse mix of tenants, including financial institutions such as Central Pacific Bank and Edward Jones, along with medical and wellness providers like Wellness Partners Hawaii and OsteoStrong. This blend of office and retail within the Hawaii Kai Towne Center fosters a dynamic business environment. The presence of well-known tenants and the proximity to popular attractions further ensure a consistent flow of visitors, making Executive Plaza a strategic location for any business.



SEAN TADAKI (PB) CCIM, SIOR

Managing Partner · RB-21112

(808) 779-9699

stadaki@caahawaii.com



SEAN KETLEY, (S) CCIM

Vice President · RS-76223

(808) 497-1904

skettley@caahawaii.com

©2025 Commercial Asset Advisors. All information contained herein is obtained from sources deemed reliable. However, no representations or guarantees are made as to the accuracy thereof, and it is provided herein subject to errors, omissions, changes and withdrawals without notice. Offeror and/or his agent should confirm this information prior to making any offer. Buyer agrees that all negotiation shall be conducted through CAA only. No subagency is offered or intended.

