

LEASE

+/-10,600 sf Warehouse/Office

4741 HIGHWAY 153 Easley, SOUTH CAROLINA



Great Exposure/High Traffic
Office/Warehouse
+/-10,600 sf
+/- 1.39 Acres
Three (3) Drive In Doors
Two (2) Dock Areas
HVAC in +/- 6,800 sf
3 Separate Spaces
,Pickens County

For additional information please contact:

Bradford Johnson, CCIM
RE/MAX Results - Commercial
400 E McBee Avenue, Suite 112
Greenville, SC 29601
864.230.1884 Cellular
brad@bradjohnson-ccim.net

Becky Call
RE/MAX Results - Commercial
400 E McBee Avenue, Ste 112
Greenville, SC 29601
Cell 585-409-1869
becky@bradjohnson-ccim.net



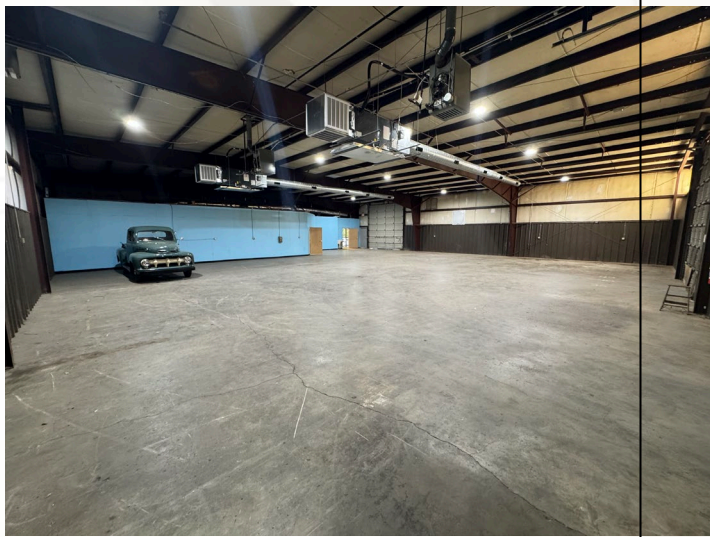
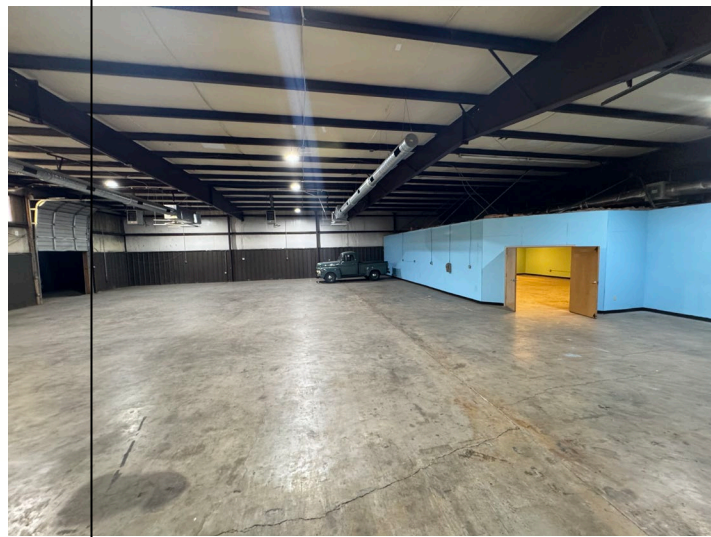
All information deemed to be reliable, but not guaranteed. It is your responsibility to confirm all information.

A Better Way in
Commercial Real Estate

LEASE

+/-10,600 sf Warehouse/Office

4741 HIGHWAY 153 Easley, SOUTH CAROLINA



For additional information please contact:

Bradford Johnson, CCIM
RE/MAX Results - Commercial
400 McBee Avenue, Ste 112
Greenville, SC 29601
864.230.1884 Cellular
brad@bradjohnson-ccim.net

Becky Call
RE/MAX Results - Commercial
400 E McBee Avenue, Ste 112
Greenville, SC 29601
Cell 585-409-1869
becky@bradjohnson-ccim.net



All information deemed to be reliable, but not guaranteed. It is your responsibility to confirm all information.

A Better Way in
Commercial Real Estate

LEASE

+/-10,600 sf Warehouse/Office

4741 HIGHWAY 153 Easley, SOUTH CAROLINA



For additional information please contact:

Bradford Johnson, CCIM
RE/MAX Results - Commercial
400 McBee Avenue, Ste 112
Greenville, SC 29601
864.230.1884 Cellular
brad@bradjohnson-ccim.net

Becky Call
RE/MAX Results - Commercial
400 E McBee Avenue, Ste 112
Greenville, SC 29601
Cell 585-409-1869
becky@bradjohnson-ccim.net

All information deemed to be reliable, but not guaranteed. It is your responsibility to confirm all information.

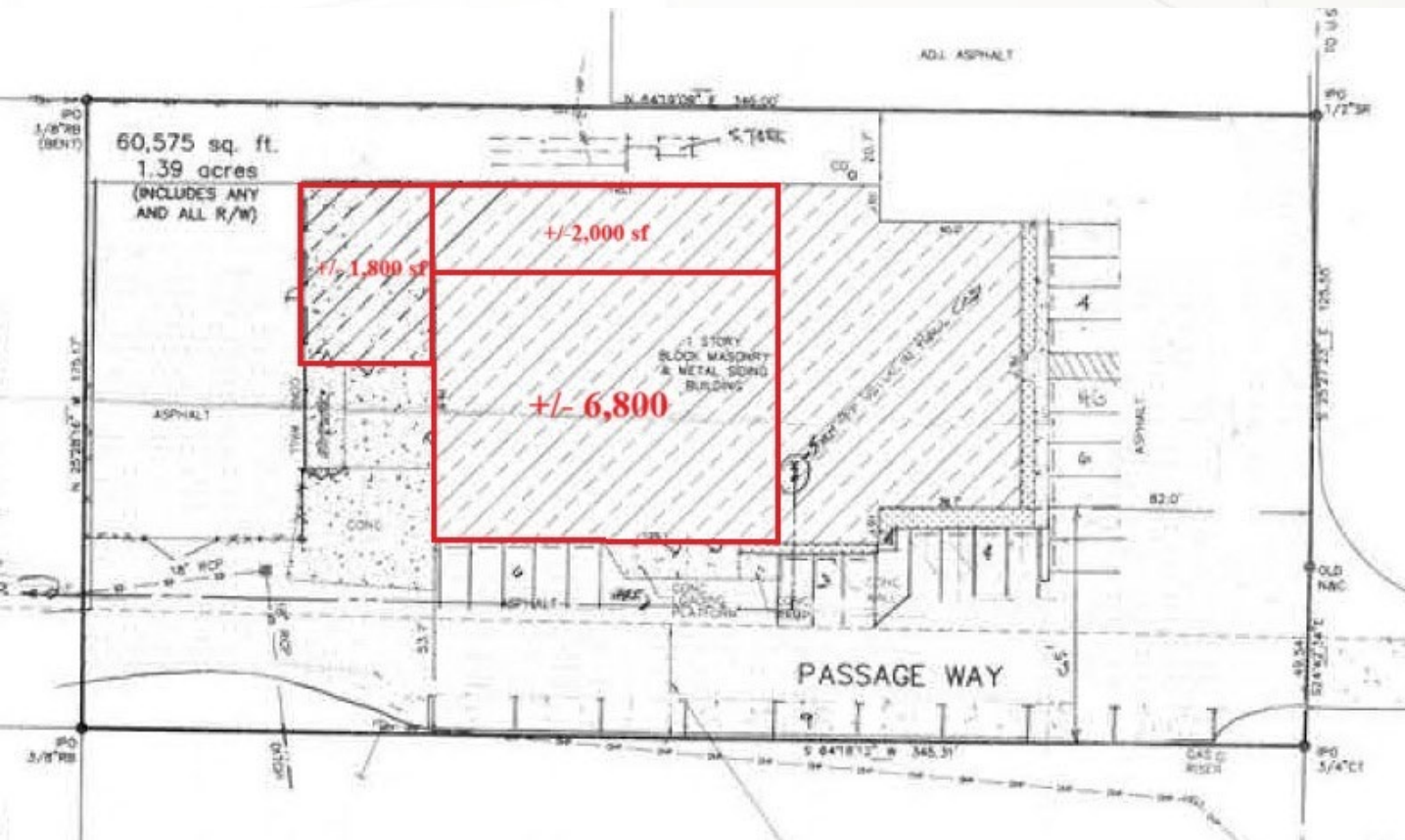


**A Better Way in
Commercial Real Estate**

LEASE

+/-10,600 sf Warehouse/Office

4741 HIGHWAY 153 Easley, SOUTH CAROLINA



For additional information please contact:

Bradford Johnson, CCIM
RE/MAX Results - Commercial
400 McBee Avenue, Ste 112
Greenville, SC 29601
864.230.1884 Cellular
brad@bradjohnson-ccim.net

Becky Call
RE/MAX Results - Commercial
400 E McBee Avenue, Ste 112
Greenville, SC 29601
Cell 585-409-1869
becky@bradjohnson-ccim.net



All information deemed to be reliable, but not guaranteed. It is your responsibility to confirm all information.

A Better Way in
Commercial Real Estate