

FOR LEASE

INTERSTATE CIRCLE

5100 INTERSTATE CIRCLE, SHREVEPORT, LA 71109



LAUREL RICE BRIGHTWELL, REALTOR®

ASSOCIATE BROKER, COMMERCIAL BROKERAGE & LEASING

318.573.1943 cell | lbrightwell@ulcoleman.com

Licensed by Louisiana Real Estate Commission

ARNOLD CANNON, REALTOR®

AGENT, COMMERCIAL BROKERAGE & LEASING

318.423.6246 cell | acannon@ulcoleman.com

Licensed by Louisiana Real Estate Commission

ULCOLEMAN
COMPANIES

207 Milam Street, Suite C | Shreveport, Louisiana 71101

318.221.0541 | www.ulcoleman.com

COMMERCIAL BROKERAGE & LEASING | ASSET & PROPERTY
MANAGEMENT | CONSTRUCTION & DEVELOPMENT

FOR LEASE

INTERSTATE CIRCLE

5100 INTERSTATE CIRCLE, SHREVEPORT, LA 71109

EXECUTIVE SUMMARY



OFFICE/WAREHOUSE Tilt-wall construction, multi-tenant framework, individual units with showroom/office entrances and back warehouse overhead doors. Aesthetically pleasing and functional pedestrian pathways, exterior lighting and security cameras, and robust landscaping with berm element.

ANNUAL RENT

\$7.00/sf net base

\$2.31/sf NNN

OUTSIDE BROKERS PAID 5% COMMISSION



LAUREL RICE BRIGHTWELL, REALTOR®
318.573.1943 cell | lbrightwell@ulcoleman.com
Licensed BROKER by Louisiana Real Estate Commission

ARNOLD CANNON, REALTOR®
318.423.6246 cell | acannon@ulcoleman.com
Licensed by Louisiana Real Estate Commission

ULCOLEMAN
COMPANIES

207 Milam Street, Suite C | Shreveport, Louisiana 71101

318.221.0541 | www.ulcoleman.com

COMMERCIAL BROKERAGE & LEASING | ASSET & PROPERTY
MANAGEMENT | CONSTRUCTION & DEVELOPMENT

FOR LEASE

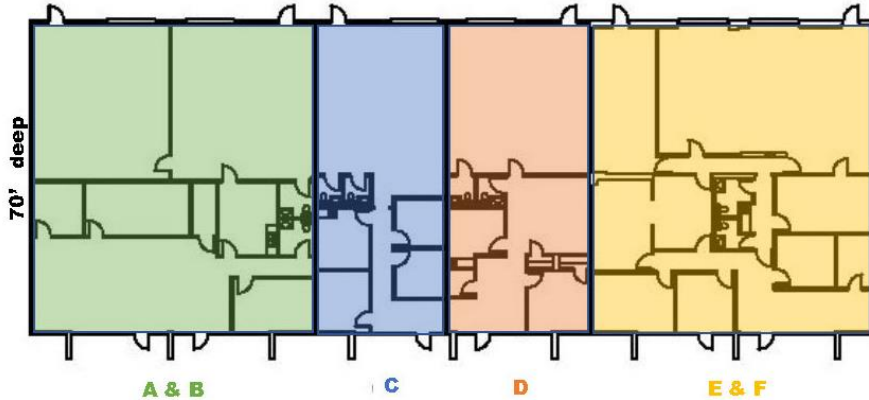
INTERSTATE CIRCLE

5100 INTERSTATE CIRCLE, SHREVEPORT, LA 71109

SITE PLAN

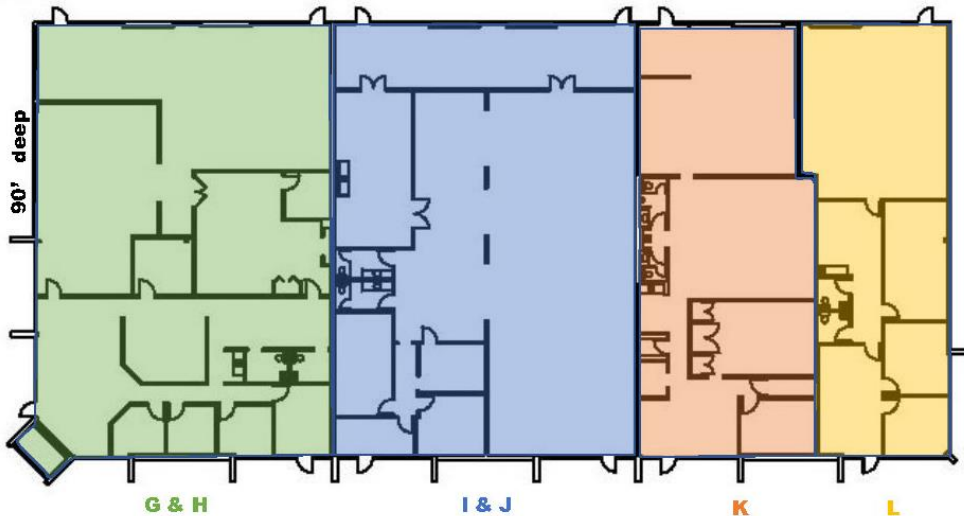
GROSS LEASING AREA 28,467 square feet

CLEAR HEIGHT 10' office, 16' warehouse



SUITES A-F

Runs east-west with south-facing entry.



SUITES G-L

Runs north-south with east-facing entry.

SUITE	LESSEE	TOTAL SQ. FT.	OFFICE SQ. FT.	WAREHOUSE SQ. FT.	10' x 10' OVERHEAD DOORS
A & B	AVAILABLE	3,833	1,878	1,955 heat	Two (2) at Grade
C	AVAILABLE	1,774	833	941	Grade
D	AVAILABLE	1,933	909	1,024	Grade
E & F	Crown Castle	3,834	2,369	1,465 heat & air	Two (2) at Grade
G & H	U. L. Coleman	5,557	2,167	3,390 heat & air	Two (2) at Grade
I & J	AVAILABLE	5,671	4,726	945	Grade & 2' Semi-Dock
K	AVAILABLE	3,241	2,194	1,047 heat & air	2' Semi-Dock
L	AVAILABLE	2,624	1,498	1,126	2' Semi-Dock

LAUREL RICE BRIGHTWELL, REALTOR®
318.573.1943 cell | lbrightwell@ulcoleman.com
Licensed BROKER by Louisiana Real Estate Commission

ARNOLD CANNON, REALTOR®
318.423.6246 cell | acannon@ulcoleman.com
Licensed by Louisiana Real Estate Commission

ULCOLEMAN
COMPANIES

207 Milam Street, Suite C | Shreveport, Louisiana 71101

318.221.0541 | www.ulcoleman.com

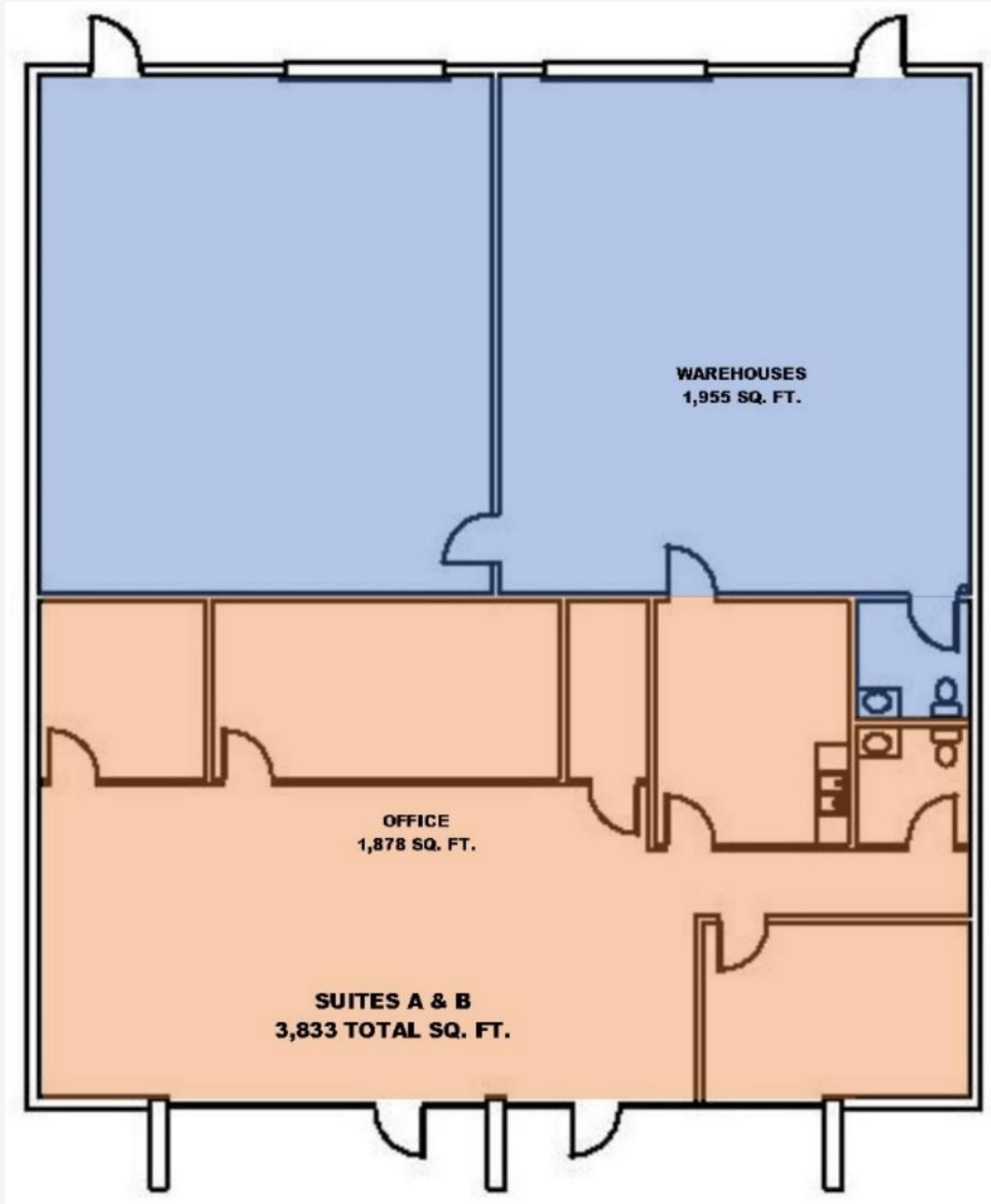
COMMERCIAL BROKERAGE & LEASING | ASSET & PROPERTY
MANAGEMENT | CONSTRUCTION & DEVELOPMENT

FOR LEASE

INTERSTATE CIRCLE

5100 INTERSTATE CIRCLE, SHREVEPORT, LA 71109

A & B FLOOR PLAN



LAUREL RICE BRIGHTWELL, REALTOR®
318.573.1943 cell | lbrightwell@ulcoleman.com
Licensed BROKER by Louisiana Real Estate Commission

ARNOLD CANNON, REALTOR®
318.423.6246 cell | acannon@ulcoleman.com
Licensed by Louisiana Real Estate Commission

ULCOLEMAN
COMPANIES

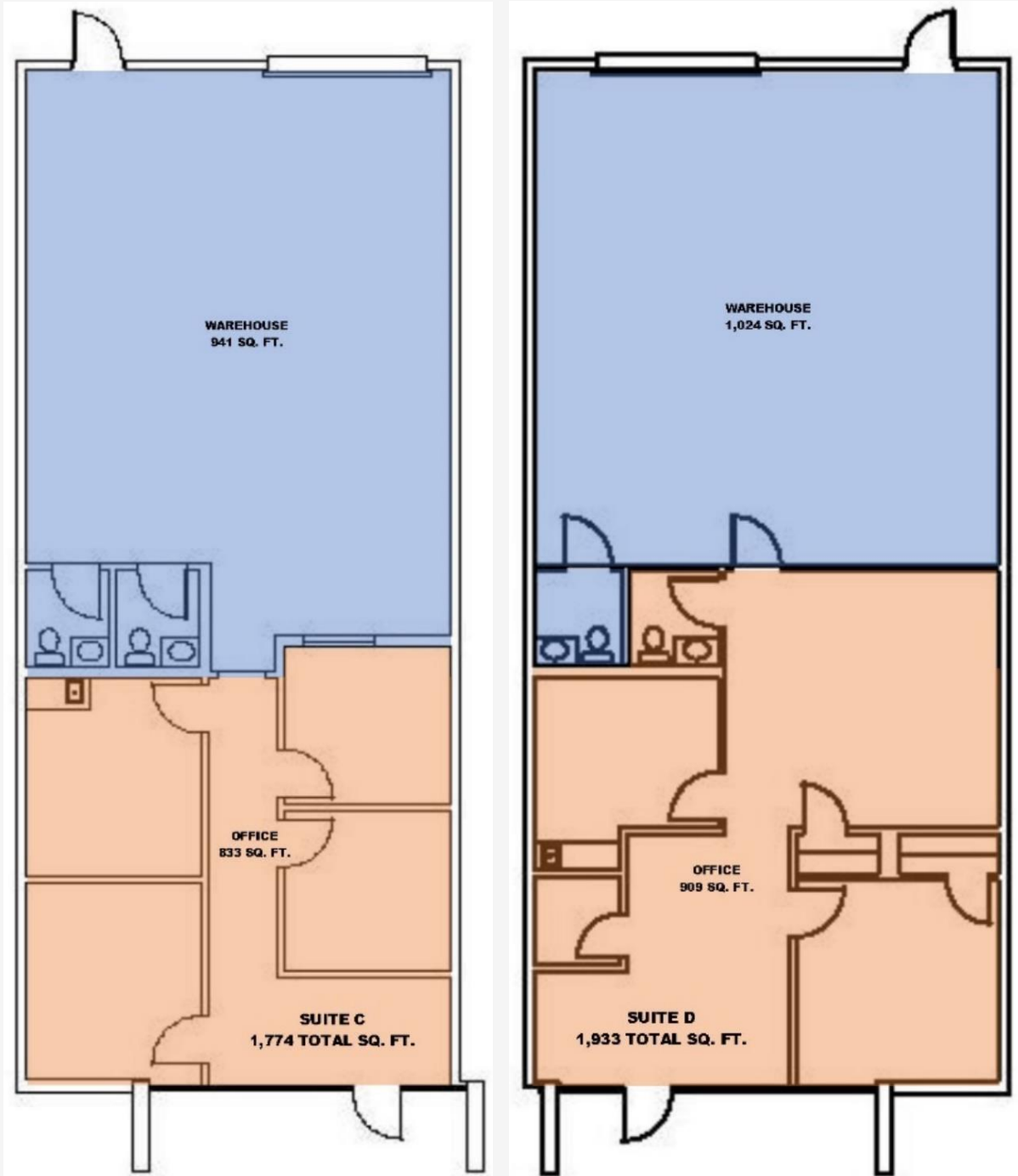
207 Milam Street, Suite C | Shreveport, Louisiana 71101
318.221.0541 | www.ulcoleman.com
COMMERCIAL BROKERAGE & LEASING | ASSET & PROPERTY
MANAGEMENT | CONSTRUCTION & DEVELOPMENT

FOR LEASE

INTERSTATE CIRCLE

5100 INTERSTATE CIRCLE, SHREVEPORT, LA 71109

C & D FLOOR PLAN



LAUREL RICE BRIGHTWELL, REALTOR®
318.573.1943 cell | lbrightwell@ulcoleman.com
Licensed BROKER by Louisiana Real Estate Commission

ARNOLD CANNON, REALTOR®
318.423.6246 cell | acannon@ulcoleman.com
Licensed by Louisiana Real Estate Commission

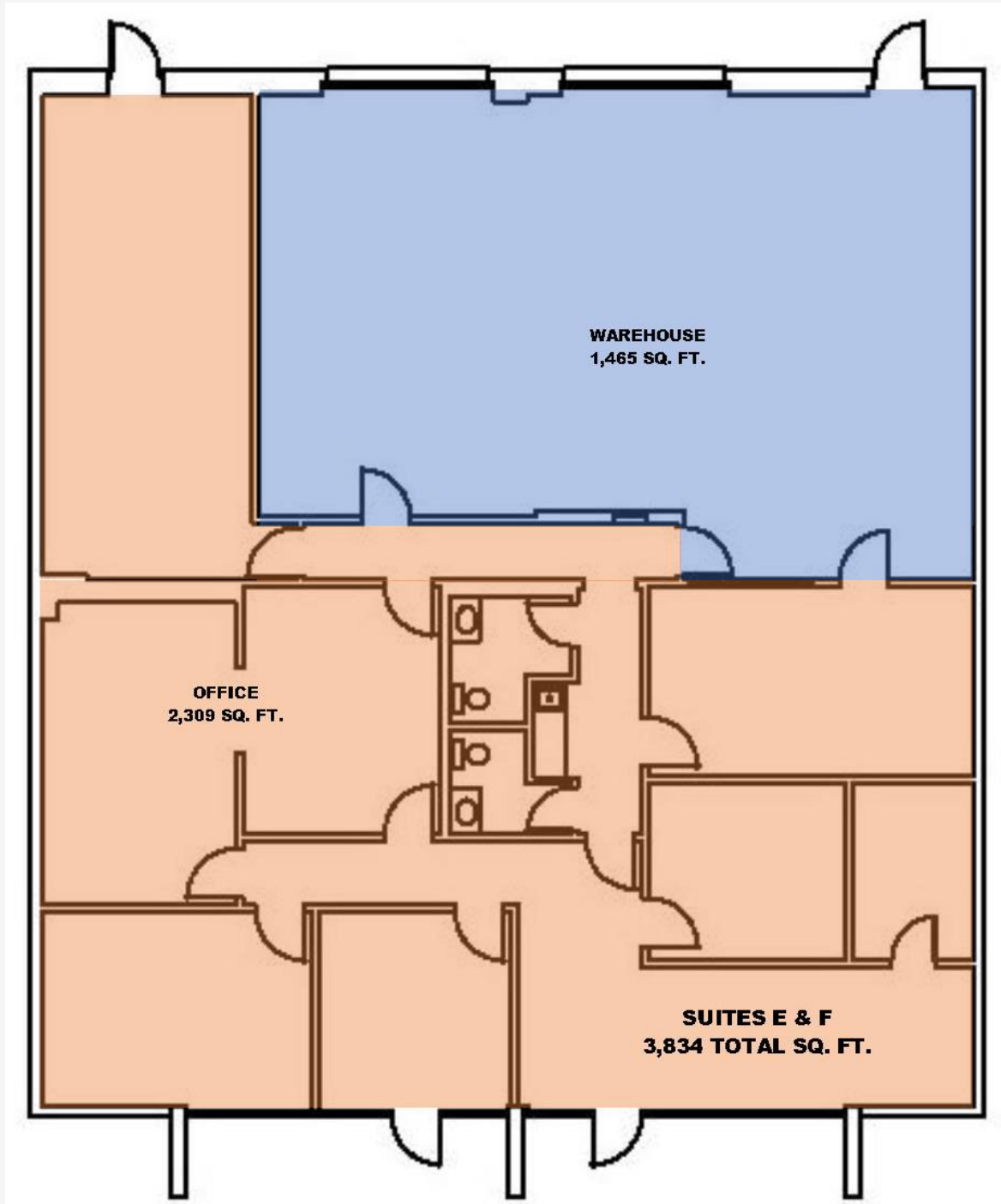
ULCOLEMAN
COMPANIES
207 Milam Street, Suite C | Shreveport, Louisiana 71101
318.221.0541 | www.ulcoleman.com
COMMERCIAL BROKERAGE & LEASING | ASSET & PROPERTY
MANAGEMENT | CONSTRUCTION & DEVELOPMENT

FOR LEASE

INTERSTATE CIRCLE

5100 INTERSTATE CIRCLE, SHREVEPORT, LA 71109

E & F FLOOR PLAN



LAUREL RICE BRIGHTWELL, REALTOR®
318.573.1943 cell | lbrightwell@ulcoleman.com
Licensed BROKER by Louisiana Real Estate Commission

ARNOLD CANNON, REALTOR®
318.423.6246 cell | acannon@ulcoleman.com
Licensed by Louisiana Real Estate Commission

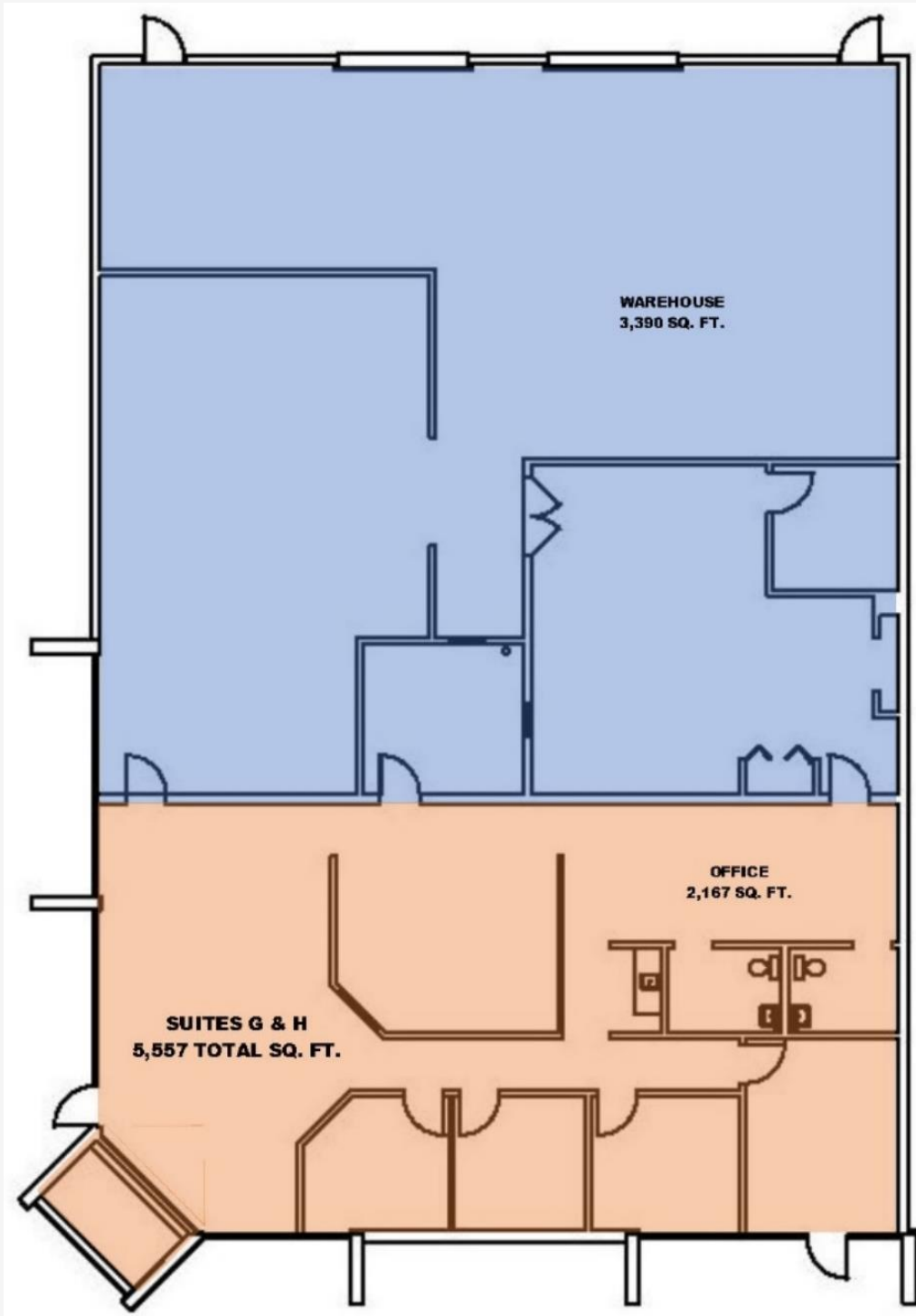
ULCOLEMAN
COMPANIES
207 Milam Street, Suite C | Shreveport, Louisiana 71101
318.221.0541 | www.ulcoleman.com
COMMERCIAL BROKERAGE & LEASING | ASSET & PROPERTY
MANAGEMENT | CONSTRUCTION & DEVELOPMENT

FOR LEASE

INTERSTATE CIRCLE

5100 INTERSTATE CIRCLE, SHREVEPORT, LA 71109

G & H FLOOR PLAN



LAUREL RICE BRIGHTWELL, REALTOR®
318.573.1943 cell | lbrightwell@ulcoleman.com
Licensed BROKER by Louisiana Real Estate Commission

ARNOLD CANNON, REALTOR®
318.423.6246 cell | acannon@ulcoleman.com
Licensed by Louisiana Real Estate Commission

ULCOLEMAN
COMPANIES

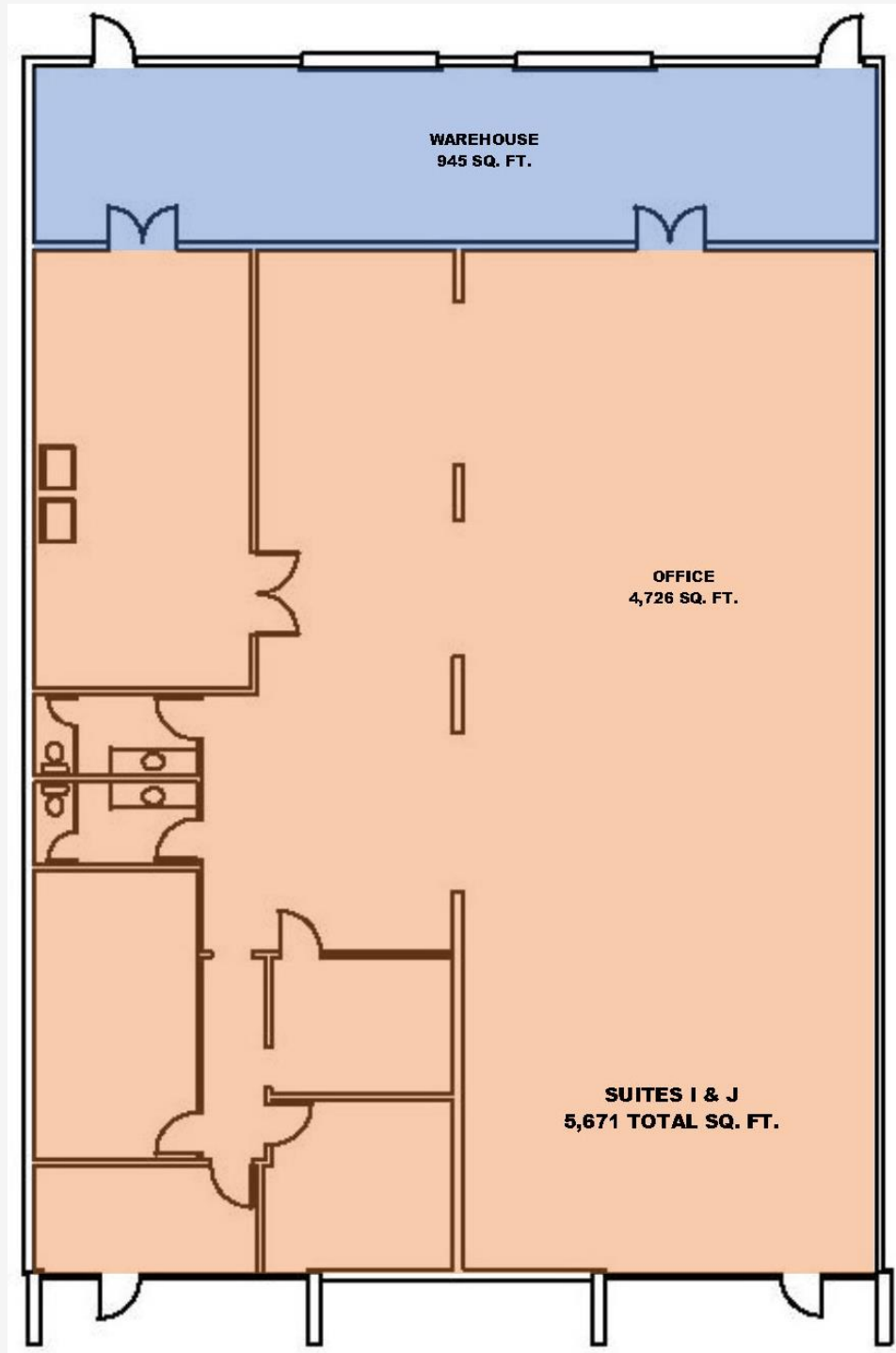
207 Milam Street, Suite C | Shreveport, Louisiana 71101
318.221.0541 | www.ulcoleman.com
COMMERCIAL BROKERAGE & LEASING | ASSET & PROPERTY
MANAGEMENT | CONSTRUCTION & DEVELOPMENT

FOR LEASE

INTERSTATE CIRCLE

5100 INTERSTATE CIRCLE, SHREVEPORT, LA 71109

I & J FLOOR PLAN



LAUREL RICE BRIGHTWELL, REALTOR®
318.573.1943 cell | lbrightwell@ulcoleman.com
Licensed BROKER by Louisiana Real Estate Commission

ARNOLD CANNON, REALTOR®
318.423.6246 cell | acannon@ulcoleman.com
Licensed by Louisiana Real Estate Commission

ULCOLEMAN
COMPANIES

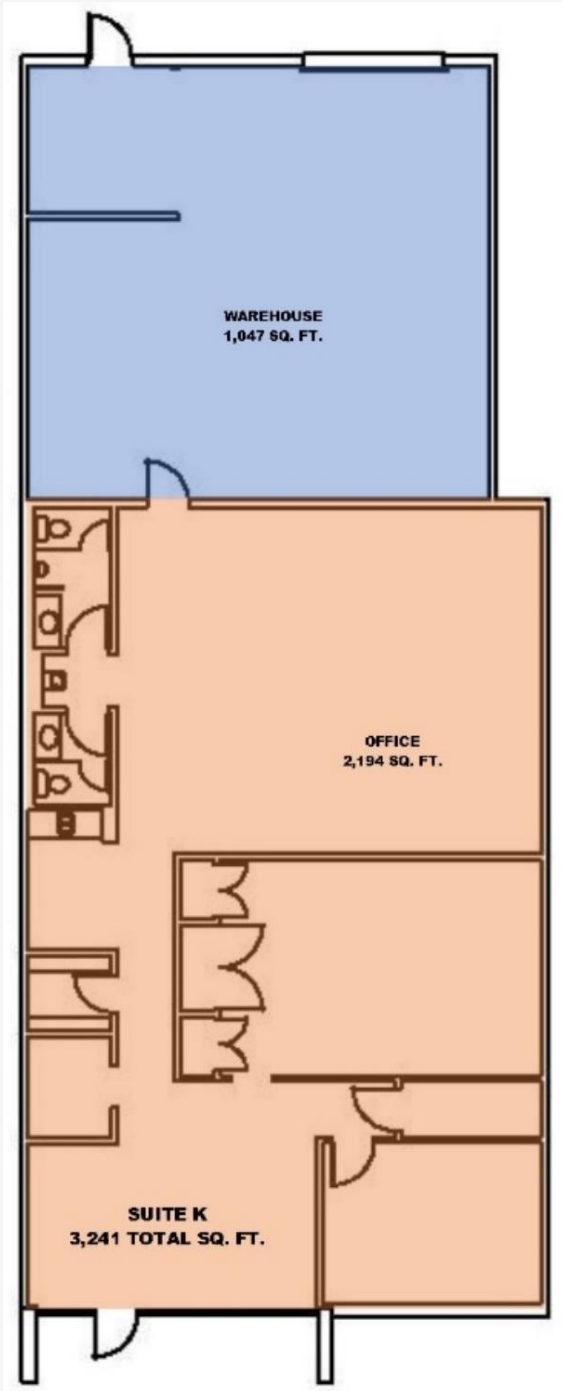
207 Milam Street, Suite C | Shreveport, Louisiana 71101
318.221.0541 | www.ulcoleman.com
COMMERCIAL BROKERAGE & LEASING | ASSET & PROPERTY
MANAGEMENT | CONSTRUCTION & DEVELOPMENT

FOR LEASE

INTERSTATE CIRCLE

5100 INTERSTATE CIRCLE, SHREVEPORT, LA 71109

K & L FLOOR PLAN



LAUREL RICE BRIGHTWELL, REALTOR®
318.573.1943 cell | lbrightwell@ulcoleman.com
Licensed BROKER by Louisiana Real Estate Commission

ARNOLD CANNON, REALTOR®
318.423.6246 cell | acannon@ulcoleman.com
Licensed by Louisiana Real Estate Commission

ULCOLEMAN
COMPANIES
207 Milam Street, Suite C | Shreveport, Louisiana 71101
318.221.0541 | www.ulcoleman.com
COMMERCIAL BROKERAGE & LEASING | ASSET & PROPERTY
MANAGEMENT | CONSTRUCTION & DEVELOPMENT

FOR LEASE

INTERSTATE CIRCLE

5100 INTERSTATE CIRCLE, SHREVEPORT, LA 71109

AERIAL



I-20 VISIBILITY & CONVENIENT INTERCHANGE ACCESS

Surrounded by light manufacturing, distribution, and assembly facilities.

PARKING 62 front spaces, back spaces, rear delivery/loading

LAUREL RICE BRIGHTWELL, REALTOR®
318.573.1943 cell | lbrightwell@ulcoleman.com
Licensed BROKER by Louisiana Real Estate Commission

ARNOLD CANNON, REALTOR®
318.423.6246 cell | acannon@ulcoleman.com
Licensed by Louisiana Real Estate Commission

ULCOLEMAN
COMPANIES

207 Milam Street, Suite C | Shreveport, Louisiana 71101
318.221.0541 | www.ulcoleman.com
COMMERCIAL BROKERAGE & LEASING | ASSET & PROPERTY
MANAGEMENT | CONSTRUCTION & DEVELOPMENT

FOR LEASE

INTERSTATE CIRCLE

5100 INTERSTATE CIRCLE, SHREVEPORT, LA 71109

TRADE AREA



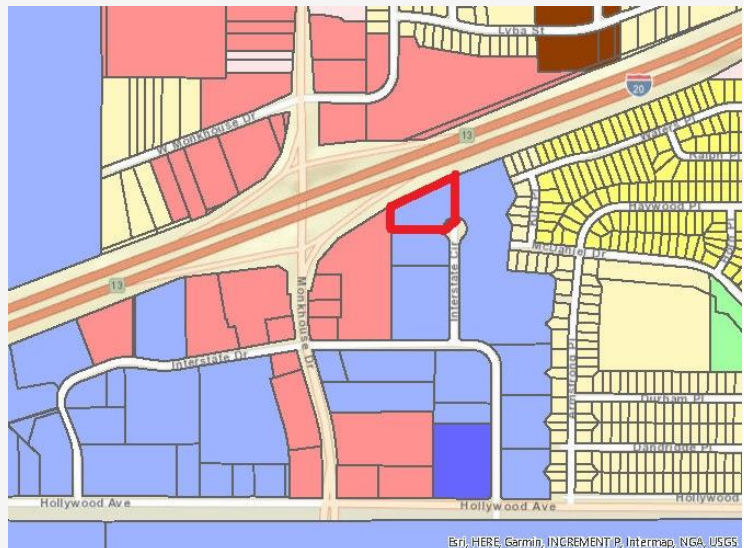
OPTIMUM POSITIONING

Blocks from Shreveport Regional Airport (KSHV)

One exit from I-220/LA Highway 3132

4 miles from I-49

ZONING I-1 – LIGHT INDUSTRIAL



LAUREL RICE BRIGHTWELL, REALTOR®
318.573.1943 cell | lbrightwell@ulcoleman.com
Licensed BROKER by Louisiana Real Estate Commission

ARNOLD CANNON, REALTOR®
318.423.6246 cell | acannon@ulcoleman.com
Licensed by Louisiana Real Estate Commission

ULCOLEMAN
COMPANIES

207 Milam Street, Suite C | Shreveport, Louisiana 71101
318.221.0541 | www.ulcoleman.com
COMMERCIAL BROKERAGE & LEASING | ASSET & PROPERTY
MANAGEMENT | CONSTRUCTION & DEVELOPMENT

FOR LEASE

INTERSTATE CIRCLE

5100 INTERSTATE CIRCLE, SHREVEPORT, LA 71109

THE EXPERTS

LAUREL RICE BRIGHTWELL, REALTOR® ASSOCIATE BROKER

Shreveport, LA native, Louisiana State University in Shreveport Bachelor's degree and Southern Methodist University Dallas, TX Master's degree graduate, and former Simon Property Group, J. Walter Thompson, and Harrah's New Orleans Casino associate, Laurel brings a myriad of marketing, advertising, sales, and public relations experience.

Her community and industry involvement has included: National Association of REALTORS® (NAR) Land Use & Property Rights Committee; Louisiana REALTORS® Association (LR) board director; Louisiana Commercial Database (LACDB) Chairman of the Board; Northwest Louisiana Association of REALTORS® (NWLAR) board President; Multi-List Service, Inc. (MLS) board President; NWLAR Commercial Investment Division board President and Commercial Trends REALTOR® Day Conference chairman; Shreveport Airports Hangar Owners Association (SAHOA) board Real Estate and Legislation Vice President; Junior League Shreveport-Bossier board Vice President; Rotary Club of Shreveport board director; Junior Achievement board director; Red River Revel Festival Production Committee Chairman; International Council of Shopping Centers member since 2006; CCIM candidate; and Greater Shreveport Chamber of Commerce (GSCC) Leadership Program graduate and session planner, 2008 Northwest Louisiana Top 40 business professionals Under 40, and 2011 Athena Award finalist. In addition, she served on Mayor Adrian Perkins's Business Council, Mayor Cedric Glover's City of Shreveport Economic Development Stakeholders, Alliance for Education Grant Committee, Community Renewal International chairman, and helped pen the City of Shreveport and Caddo Parish 2030 Master Plan. She is an active participant in Daughters of the American Revolution, The Cotillion Club, and Southern Trace Country Club.

ARNOLD CANNON, REALTOR® AGENT

Arnold Cannon joined U. L. Coleman Companies in the spring of 2005 specializing in commercial brokerage. On a daily basis, he is reviewing property in the Shreveport area for clients to ensure their business needs are met, maintaining current contacts for new listings, and finding new ones.

Arnold is a graduate of Louisiana State University in Baton Rouge with a Bachelor of Arts Degree. He is a member of the National Association of REALTORS®, the Louisiana REALTORS® Association, and the Commercial Investment Division of the Northwest Louisiana Association of REALTORS®. He is also a Notary Public for Caddo Parish.

Before beginning his second career in Commercial Real Estate, Arnold was the past owner and president of A & I Warehouse, Inc. His company owned and operated several locations in Marshall, Texas, and the Shreveport/Bossier City area, specializing in automotive parts and supplies distribution.

U. L. COLEMAN COMPANIES **U. L. COLEMAN COMPANY | U.L. COLEMAN PROPERTIES | SEQUOIA CONSTRUCTION**

Founded by CEO, Linc Coleman in 1973, U.L. Coleman Companies has grown to become a leading full-service real estate company providing diverse product expertise for commercial and multifamily residential products. In providing these services, we utilize a fully-integrated approach; one that respects the environment and social and economic needs of communities. The growth of the companies has created employment opportunities for over 150 associates in various departments and locations. Our approach combines professional planning, aesthetic appeal, and quality service. From land development and construction, to property management, U.L. Coleman Companies offer attractive, affordable working and living environments and sound investment opportunities.

With its corporate headquarters located in Shreveport, Louisiana, U. L. Coleman Properties, LLC was the first commercial real estate company in North Louisiana to receive the Accredited Management Organization® (AMO®) designation. Our management portfolio includes over 2.7 million square feet of office buildings, shopping centers, industrial properties, mini-storage facilities, and multifamily communities.

Whether you are looking for the right office, retail, industrial environment, multifamily community for your lifestyle, or a professional, accredited organization to manage your real estate investments, U.L. Coleman Companies will exceed your expectations in providing successful solutions and long-term results.

LAUREL RICE BRIGHTWELL, REALTOR®
318.573.1943 cell | lbrightwell@ulcoleman.com
Licensed BROKER by Louisiana Real Estate Commission

ARNOLD CANNON, REALTOR®
318.423.6246 cell | acannon@ulcoleman.com
Licensed by Louisiana Real Estate Commission

ULCOLEMAN
COMPANIES

207 Milam Street, Suite C | Shreveport, Louisiana 71101

318.221.0541 | www.ulcoleman.com

COMMERCIAL BROKERAGE & LEASING | ASSET & PROPERTY
MANAGEMENT | CONSTRUCTION & DEVELOPMENT