


WALNUT STREET

RITTENHOUSE SQUARE | PHILADELPHIA, PA

MSC

x

 ASANA PARTNERS

BONOBOS

BONOBOS

BONOBOS

1521 WALNUT STREET



PROPERTY DETAILS

- ▶ *Prominent full-building branding opportunity on Walnut Street (8,022 SF total) over 3 floors*
- ▶ *2,340 SF ground floor plus 2nd and 3rd floors*
- ▶ *Potential for new storefront*
- ▶ *Available now*

DEMOGRAPHICS

Center City Trade Area
From the River to River between Girard Avenue & Tasker Avenue

EST. POPULATION

188,131

EST. MEDIAN HH INCOME

\$99,150

EST. MEDIAN AGE

35

EST. EMPLOYEES

258,822

NEIGHBORING WALNUT STREET TENANTS

CB2



alo

WARBY PARKER

rag & bone
NEW YORK

MEJURI



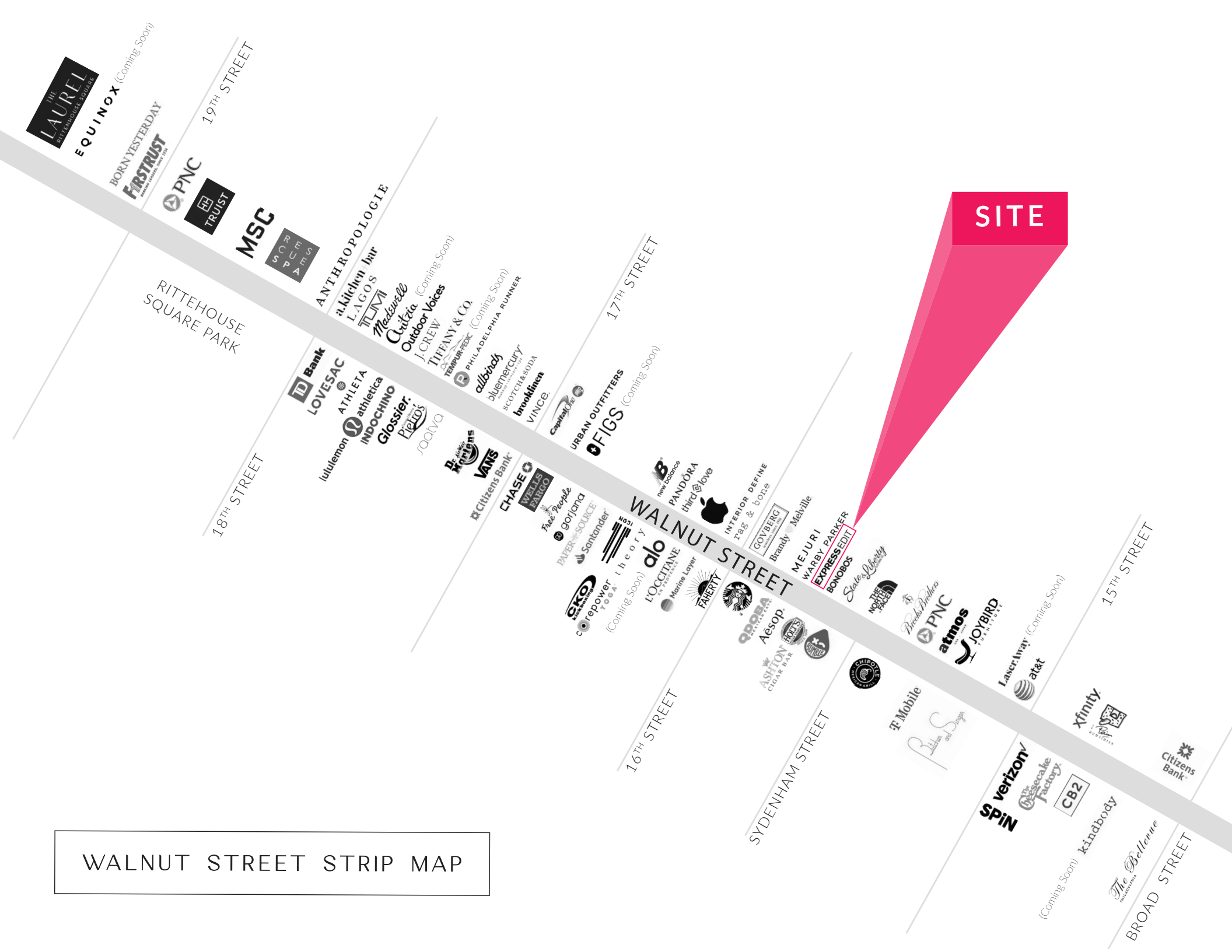
Aēsop.

FLOOR PLANS



WALNUT STREET

WALNUT STREET STRIP MAP



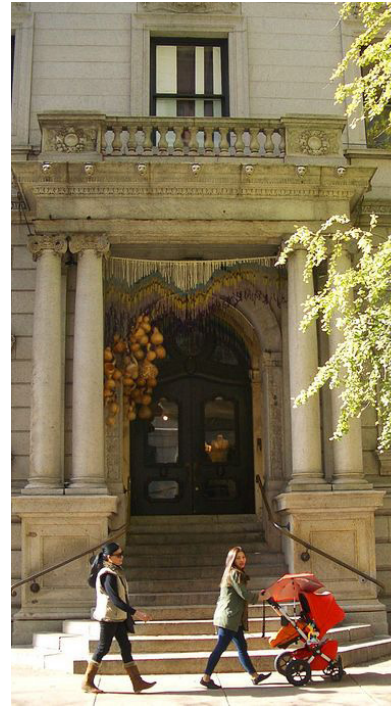
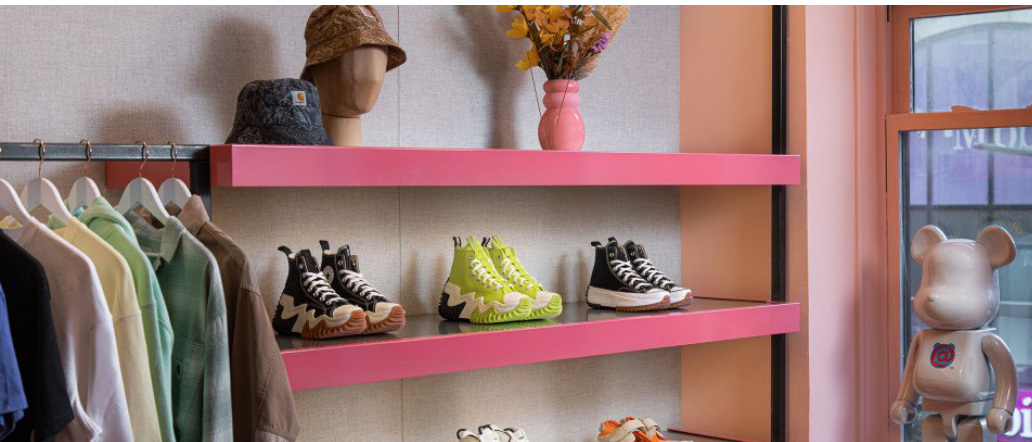
SITE

RITTENHOUSE SQUARE NEIGHBORHOOD MAP



RITTENHOUSE SQUARE

AN OVERVIEW



RITTENHOUSE SQUARE IS THE MOST FAMOUS NEIGHBORHOOD IN PHILADELPHIA

-serving as the epicenter of retail, dining, daytime office traffic, hotels, affluent residential, and nightlife. The trade area is positioned with unmatched access to Center City's most impactful traffic drivers. From an ultra-affluent residential base, to over **44M SF of office**, to an acclaimed arts district and a flourishing tourism base, it truly is a live/work/play 24 hour neighborhood. As the **5th most walkable downtown** in the country, it is easily accessed by the various other highly connected and flourishing Philadelphia neighborhoods. It provides maximum exposure along with unparalleled national co-tenancy in a downtown setting and serves as the ideal city entry point for most national retailers and restaurants.

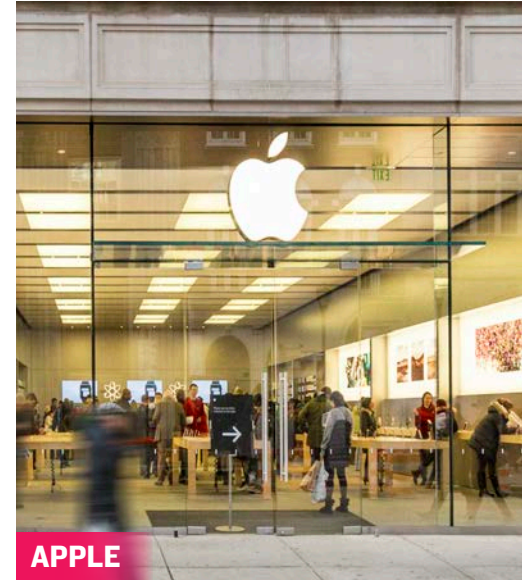
MSC

WALNUT STREET

RETAIL



ALO



APPLE



Glossier.



CB2



VINCE.



FAHERTY



ANTHROPOLOGIE

lululemon  athletica



WARBY PARKER



MADEWELL

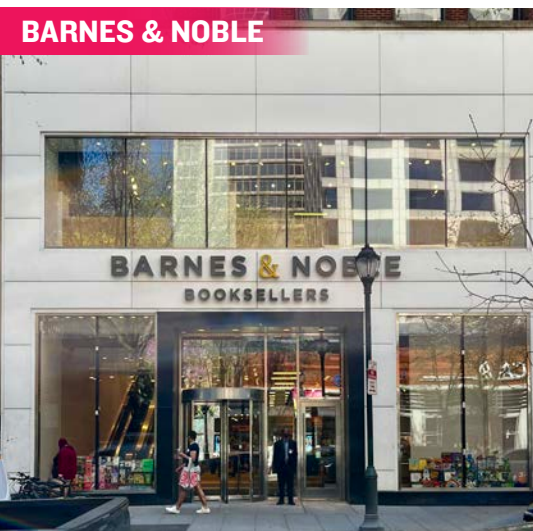
 gorjana

Walnut and Chestnut Streets, along with the connecting numbered streets, have become attractive locations for both high-end and fast-fashion retailers who value the city's highly concentrated, cosmopolitan and diverse customer base. Walnut Street is the city's premier "high street" retail corridor with four primary blocks that span Broad Street to 18th Street. With a mix of upscale apparel/contemporary stores, athleisure, digitally native brands, jewelry, and furniture, Walnut Street's leasing activity is the strongest it has ever been:

15 NEW DEALS SIGNED IN THE FIRST HALF OF 2022 ALONE.

CHESTNUT STREET

RETAIL



BIGGER BOX TENANTS

such as Barnes & Noble, Bloomingdale's Outlet, Uniqlo, Nordstrom Rack and Sephora mixed with local fashion institutions such as Boyds Department Store and Joan Shepp, makes Chestnut Street a vibrant and diverse retail corridor that benefits from strong pedestrian counts and cross-shopping with neighboring Walnut Street.



HEYDAY



RESCUE SPA



BARRYS BOOTCAMP

FITNESS, HEALTH & WELLNESS



SOULCYCLE



EQUINOX

HOTELS



RESTAURANTS

From renowned Stephen Starr, Michael Schulson and Cook N Solo restaurants to local James Beard award-winning chefs, Rittenhouse Square is a culinary mecca and receives national recognition for its booming restaurant scene.



vernick
food & drink




QSR / SPECIALTY

Rittenhouse Square's density, day-time population and unparalleled exposure makes it an ideal location for national QSRs looking to enter the Philadelphia market.



MSC

X

 ASANA PARTNERS

BRITTANY GOLDBERG

bgoldberg@hellomsc.com

215.883.7405

JACOB COOPER

jcooper@hellomsc.com

215.883.7402

JULIA MCMANUS

jmcmamus@hellomsc.com

215.883.7376

BONOBOS

BONOBOS

BONOBOS

ATHLETIC
PERFORMANCE