



LaGrange Marketplace

TOTAL VISITORS
60.8K
(12 MONTHS)

OVERVIEW

900 Hogansville Road
LaGrange, GA 30241

For Lease

Type: Retail

Total SF: 76,594

LaGrange, a vibrant community located approximately 60 miles southwest of Atlanta, offers an exciting opportunity for retailers. At the heart of this thriving community lies LaGrange Marketplace, attracting a steady stream of foot traffic. Join renowned retailers like Buddy's Home Furnishings, metroPCS, Liquor Depot, and Klassy Beauty Mart, and seize the opportunity!

RETAILERS INCLUDE

Food Depot
metroPCS

LEASING ASSOCIATE



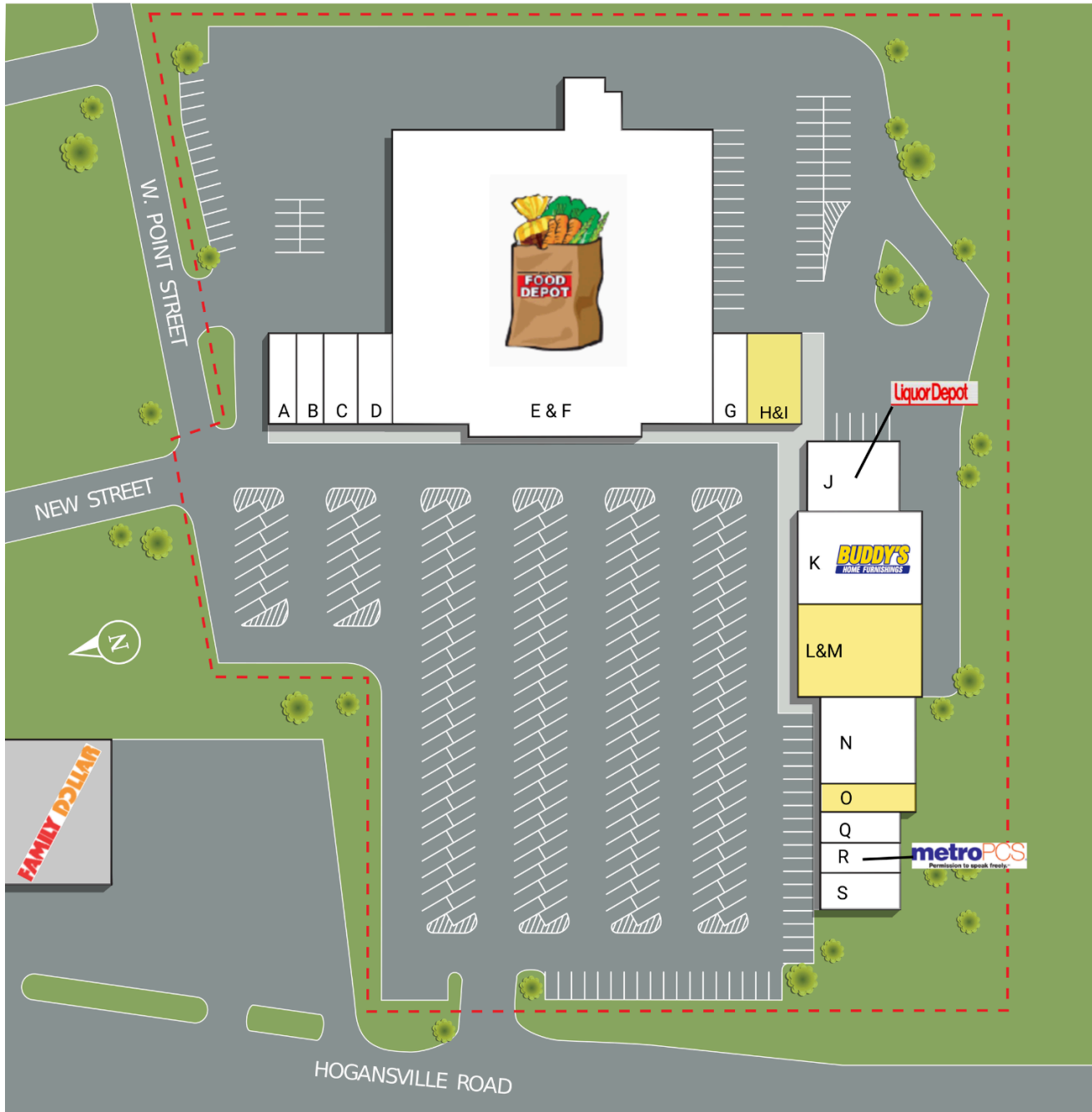
Denbeigh Marchant
VP of Leasing
(757) 636-1301
denbeigh@whlr.us

DEMOGRAPHICS

	3 MILES	5 MILES	10 MILES
POPULATION	6,711	19,006	36,610
HOUSEHOLDS	2,434	6,701	13,355
AVG. HH INCOME (\$)	\$44,773	\$43,768	\$47,361
MEDIAN AGE	35	33	33

LaGrange Marketplace

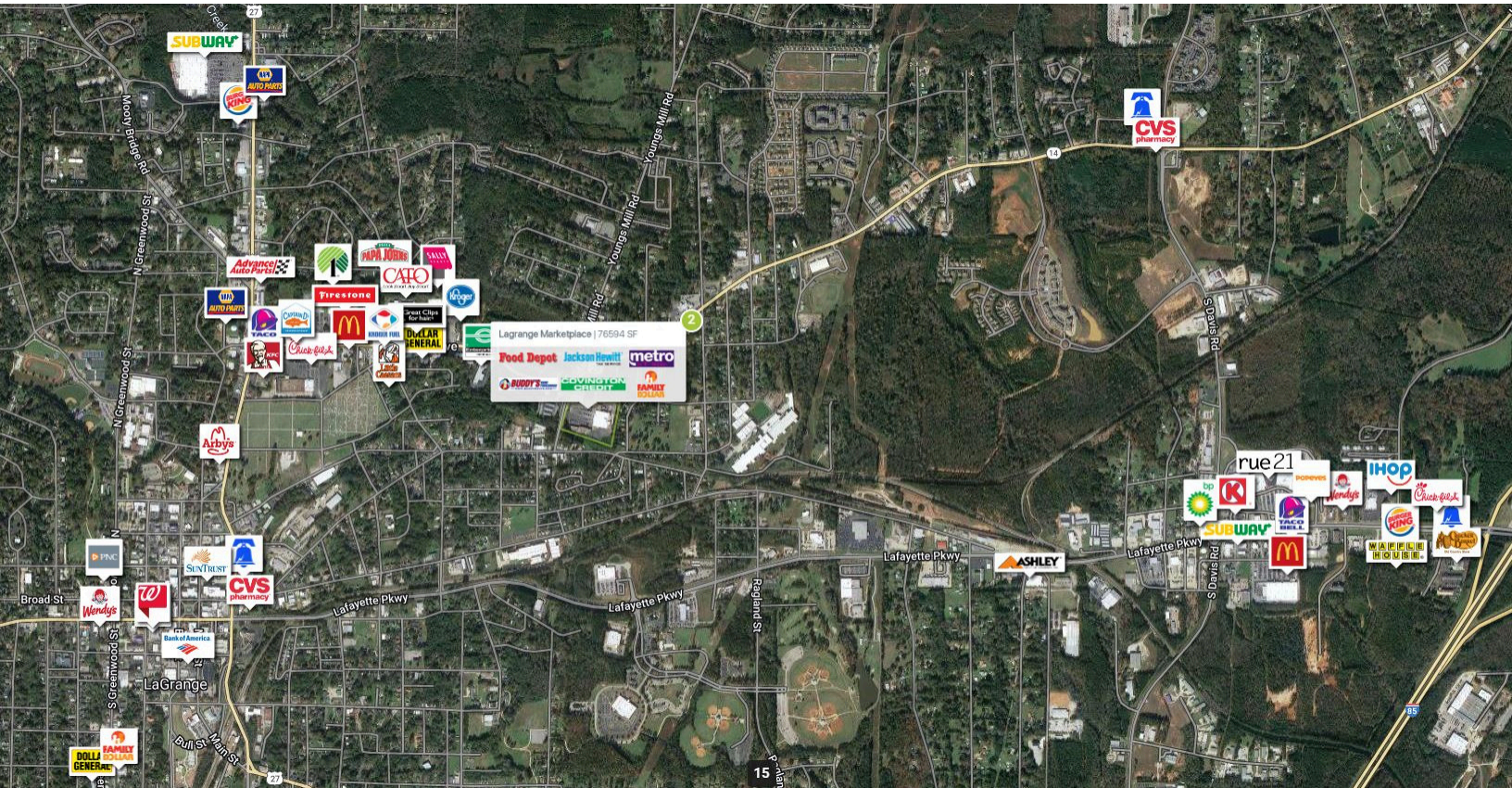
900 Hogansville Road
LaGrange, GA 30241



SUITE	TENANTS	S.F.	SUITE	TENANTS	S.F.
A	LaGrange Loans	1,200	K	Buddy's Home Furnishings	4,800
B	Wing and Burger	1,200	L & M	AVAILABLE	4,794
B	LaGrange Tobacco Outlet	1,500	N	Klassy Beauty Mart	3,600
D	Flair	1,500	O	AVAILABLE	1,200
E & F	Food Depot	46,700	Q	A-1 Cuts	1,000
G	The Mattress Suite	1,500	R	Metro PCS	1,000
H & I	AVAILABLE	2,400	S	Ruby Nails	1,000
J	Liquor Depot	3,000			

LaGrange Marketplace

900 Hogansville Road
LaGrange, GA 30241



AADT: 8,830 (Hogansville Road)

Avg. Hourly Traffic: 368 (Hogansville Road)

DISCLAIMER

The information contained herein has been obtained from sources we believe to be reliable; however, we have not investigated nor verified any information and make no guarantee, warranty or representation to the accuracy or completeness of information. By accepting this Marketing Brochure, you agree to release Wheeler Real Estate Company and WHLR and hold it harmless from any kind of claim, cost, expense, or liability arising out of your investigation and/or lease of this property. This Marketing Brochure and offering is subject to correction or errors and omissions, change of price, prior to sale/lease or withdrawal from the market, without notice.

WHLR

WHEELER REAL ESTATE COMPANY
a subsidiary of Wheeler Real Estate Investment Trust

2529 VIRGINIA BEACH BLVD., VIRGINIA BEACH, VA 23452 | P: (757) 627-9088 | WHLR.US