

Petaluma River

**Petaluma River Place
Housing Development
*Under Construction
(49 Units)**

Petaluma Blvd S.

**KB Home Sterling Hills
at Quarry Heights**

NORTH TO
SANTA ROSA



SOUTH TO SAN
FRANCISCO

Petaluma Blvd S.

Jones Lang LaSalle Brokerage, Inc. RE Lic# 01856260

For Sale or Lease

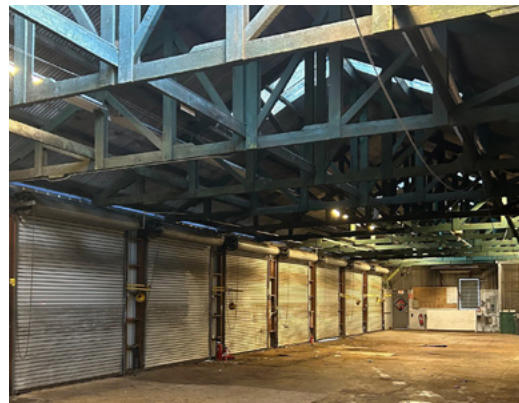
1501 Petaluma Blvd S, Petaluma, CA

±2.5 Total Acres | Excellent Access & Visibility to Hwy 101

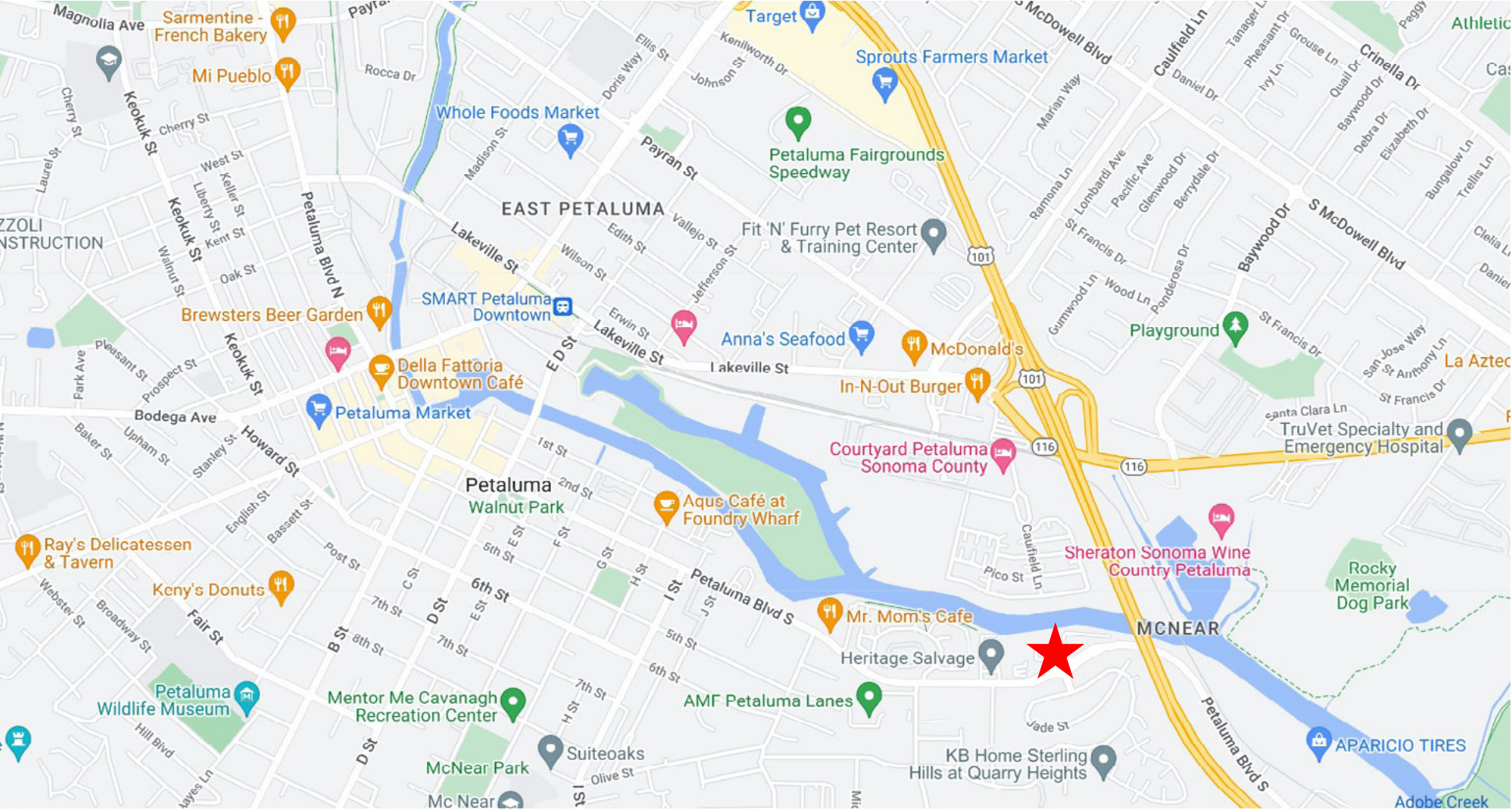
±1.5 Acres Available For Lease | ±4,000 SF Warehouse | ±1,500 SF Dispatch/Office Building

Property Highlights:

- Located on ± 2.5 acres (± 1.5 acres available for lease)
- $\pm 1,500$ SF office/dispatch building
- $\pm 4,000$ SF freestanding, metal warehouse building
- Nine (9) roll-up doors on warehouse (4 grade-level, 5 dock-high)
- Large, fenced yard area
- All utilities to site
- Excellent access & visibility to Hwy 101
- Close proximity to Downtown Petaluma
- Zoning: MU1A, Click [HERE](#) for more zoning information
- Lease rate: \$12,500/mo (industrial gross)
- Sale price: \$4,950,000.00



Convenient Access to Highway 101 | 1 Mile to Downtown Petaluma



For more information, please contact:

Tony Sarno
 +1 707 217 7196
 tony.sarno@jll.com
 RE License# 01430933



Although information has been obtained from sources deemed reliable, neither Owner nor JLL makes any guarantees, warranties or representations, express or implied, as to the completeness or accuracy as to the information contained herein. Any projections, opinions, assumptions or estimates used are for example only. There may be differences between projected and actual results, and those differences may be material. The Property may be withdrawn without notice. Neither Owner nor JLL accepts any liability for any loss or damage suffered by any party resulting from reliance on this information. If the recipient of this information has signed a confidentiality agreement regarding this matter, this information is subject to the terms of that agreement. ©2024. Jones Lang LaSalle IP, Inc. All rights reserved. Jones Lang LaSalle Brokerage, Inc. RE Lic# 01856260