

Tice's Corner Marketplace

RIPCO
RETAIL LEASING

431B Chestnut Ridge Road
Woodcliff Lake, NJ 07677



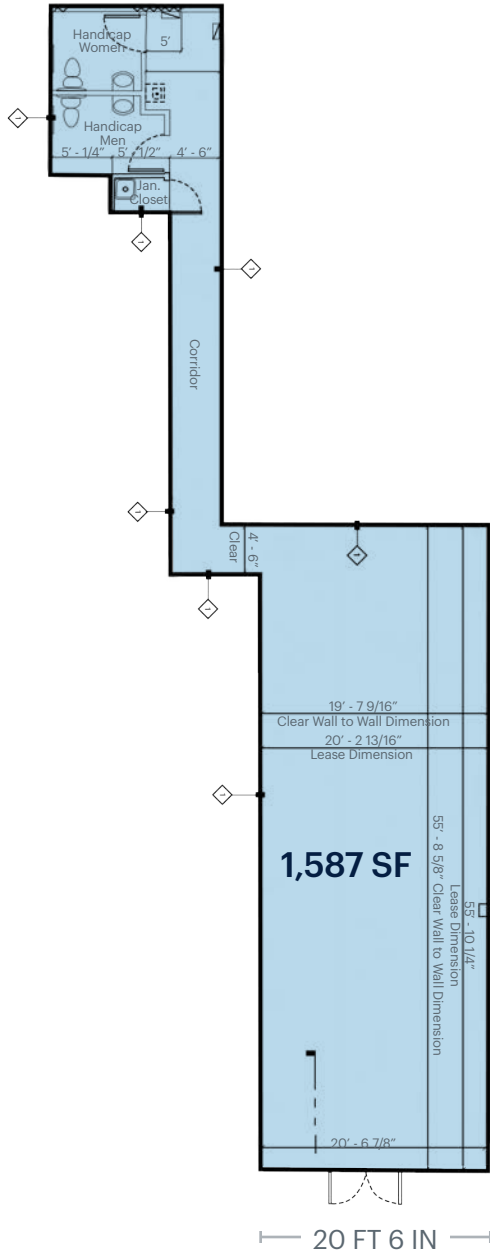
For Lease

1,587 SF

1,587 SF Available for Sublease

Former Clothing Store

Space Details



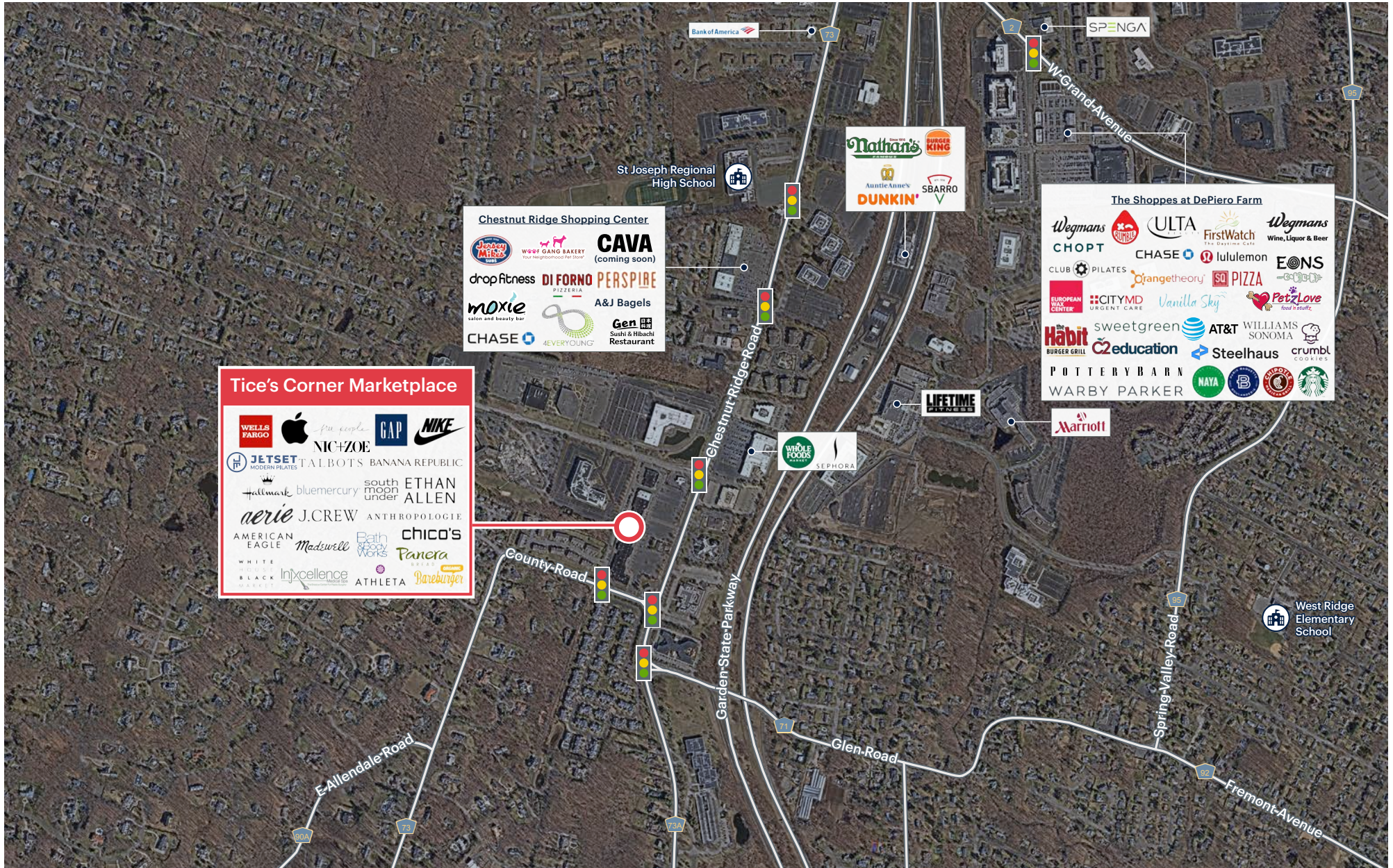
Location	Next to Talbots and F. Silverman Jewelers	
Size	Ground Floor	1,587 SF
	Johnny Was Sublease	
Frontage	20 FT 6 IN	
Possession	Immediate	
Term	Sublease to long term	
Rent	Upon request	
Status	Currently Johnny Was	
Co-Tenants	Talbots, JETSET Pilates, Chico's, Athleta, Madewell, GAP, J.Crew, bluemercury, Anthropologie, Hallmark, Aerie, Free People, South Moon Under, Ethan Allen, Banana Republic, Bath & Body Works, Silverman Jewelers, White House Black Market, Apple, Nic + Zoe, Panera, The Parlour, The Parlour Nail Salon, Bareburger, James Tracey Eye Care, Nike, Injxcellence Medical Spa	
Comments	12 FT ceilings Bergen County's most prominent fashion lifestyle center Sublease term through Jan 2034. Direct deal with Landlord is possible	

Site Plan

741 parking spaces

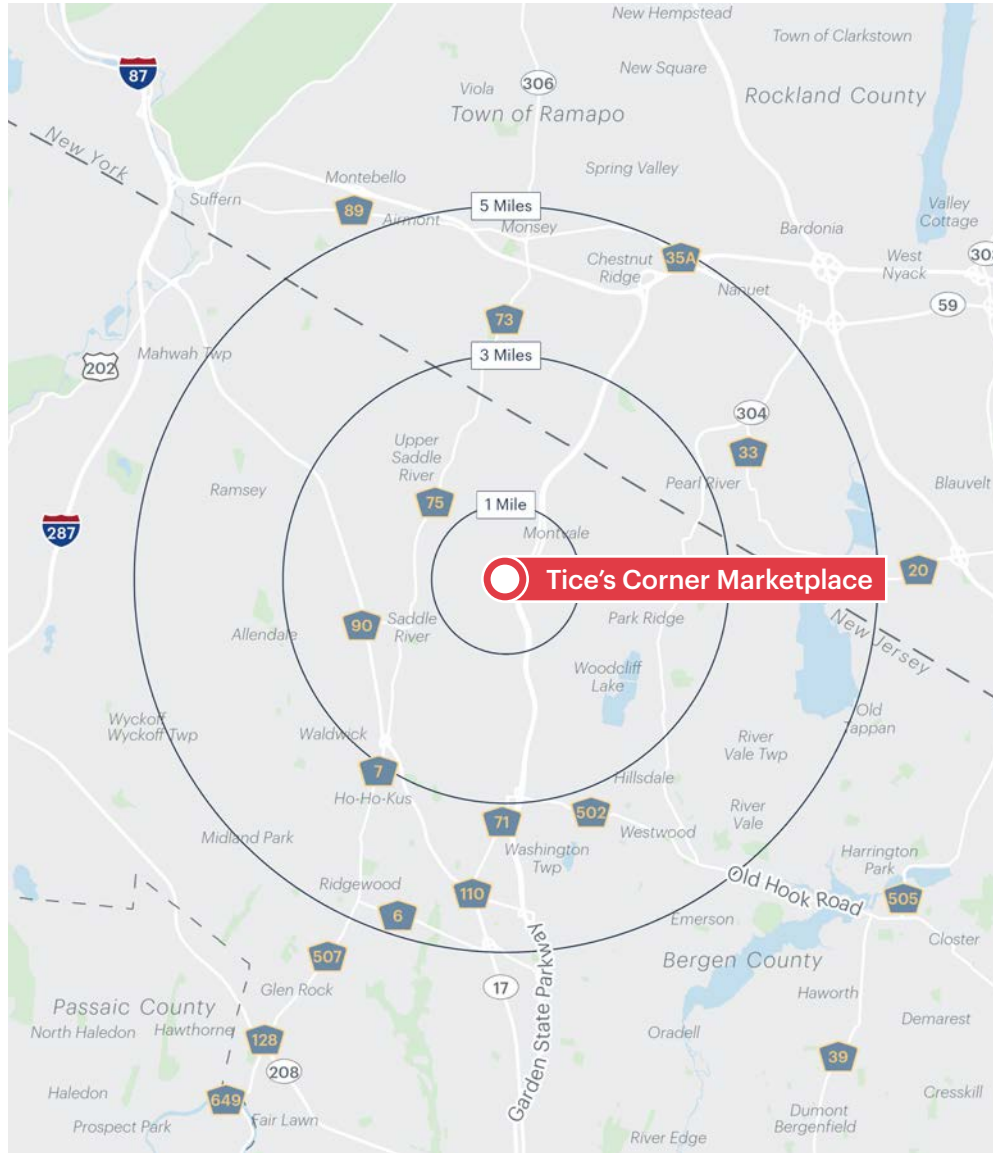


Area Retail



Area Demographics

2025 ESRI Summary Report



	1 mile	3 miles	5 miles
Total Population	4,003	58,866	219,606
Total Households	1,681	20,337	74,833
Average Household Income	\$292,119	\$238,613	\$215,126
Median Household Income	\$218,046	\$180,499	\$158,114
% Population with Bachelors +	73.84%	63.55%	60.97%
Daytime Population	11,635	66,591	226,624
Total Daytime Employees	9,560	37,507	116,349
Total Businesses	427	2,324	9,578

Daytime Generators



Contact Exclusive Agents

Lisa Ricca
ricca@ripconj.com | 201.636.7449

Jenna Bucino
jbucino@ripconj.com | 201.254.7330

Beth Rosen
brosen@ripcony.com | 212.838.5195