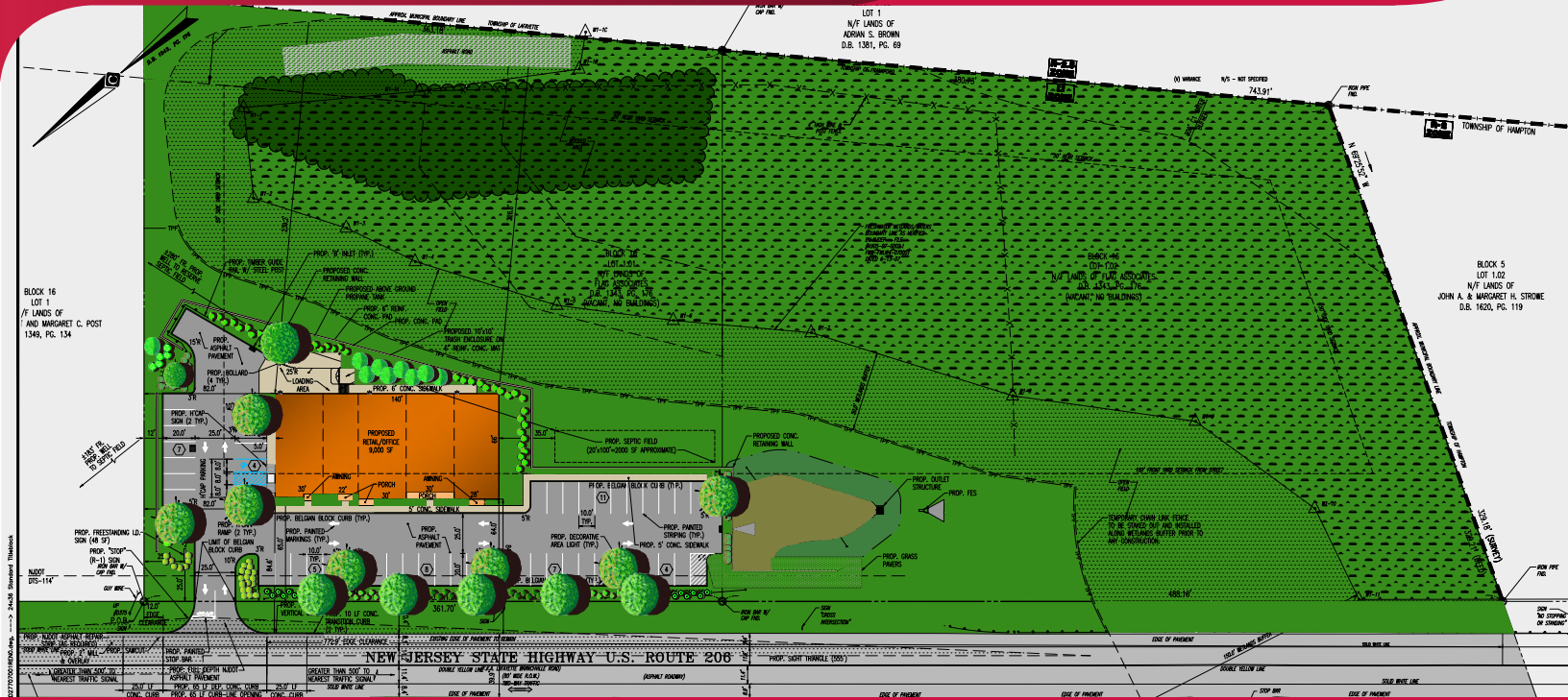


FOR SALE

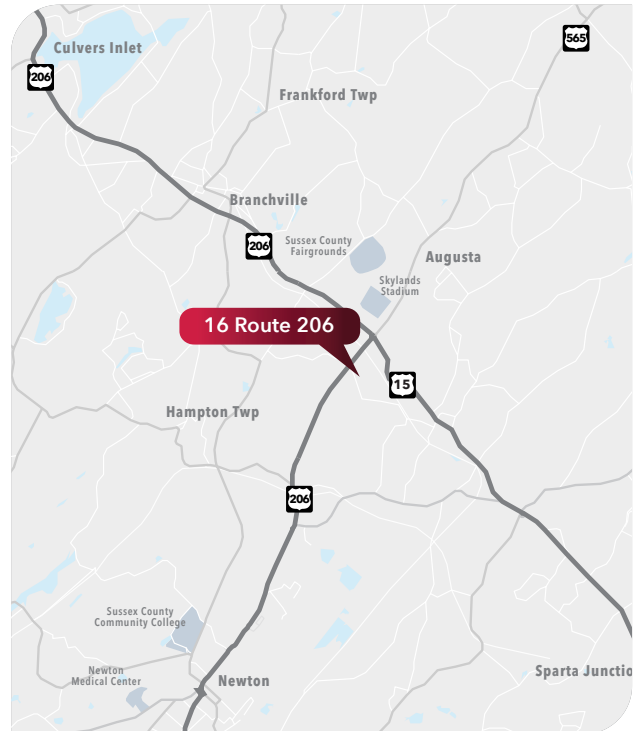
6 ACRES OF LAND - 3 ARE BUILDABLE

16 ROUTE 206, AUGUSTA, NJ 07822



PROPERTY OVERVIEW

	6 Acres
AVAILABILITY:	3 Acres are buildable As is or build-to-suit
TAXES:	\$12,458
COMMENTS:	Approvals for 9,000 SF of retail 362 feet of frontage on Route 206 Land is located off intersection of Routes 206 and 15 Close proximity to The Sussex County Fairgrounds and Skylands Stadium



FOR MORE INFORMATION CONTACT EXCLUSIVE BROKER:

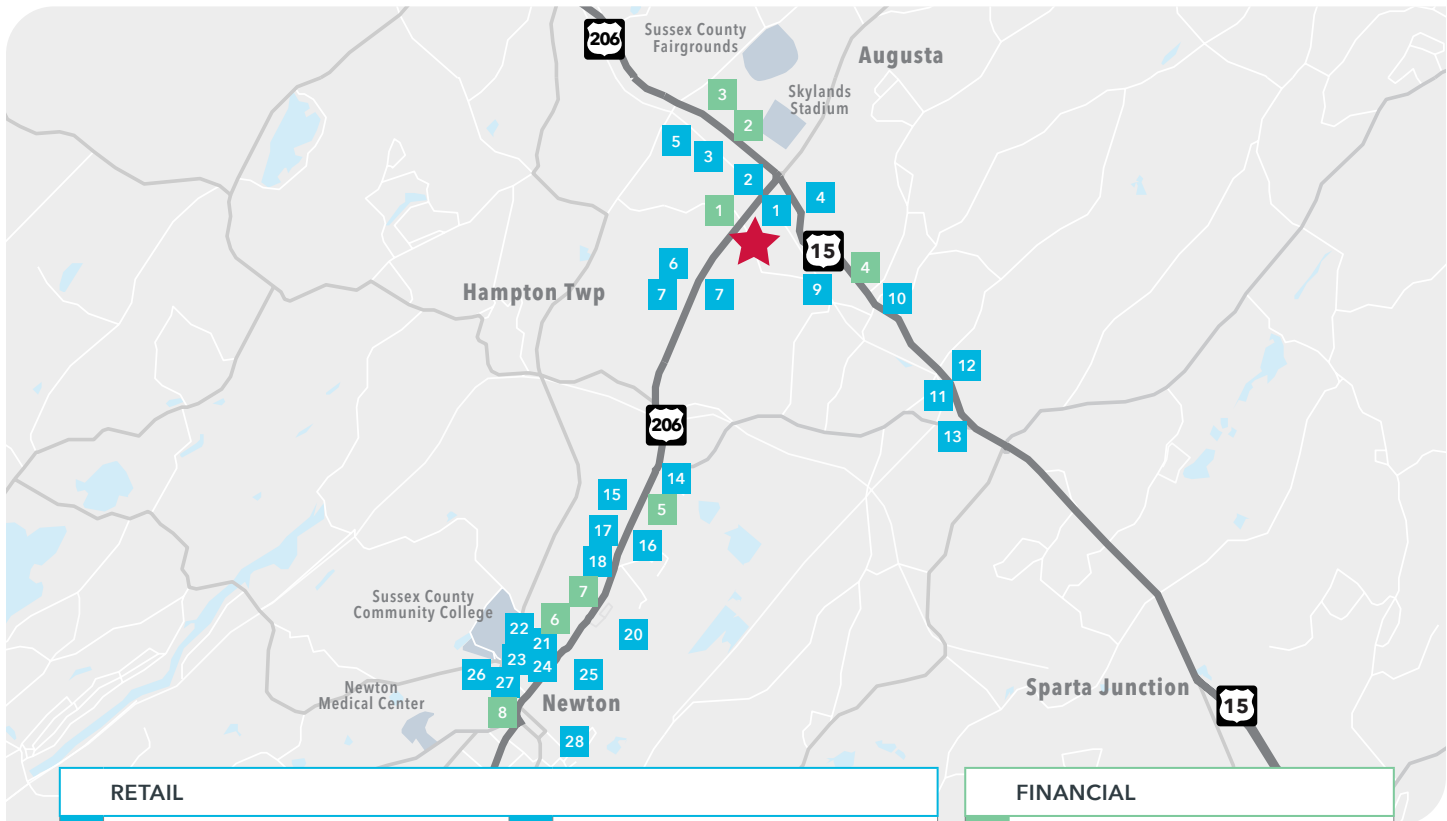
Scott Deutchman
scott.deutchman@lee-associates.com
C: 201.913.4691

FOR FINANCING:

Gary Sopko
gary.sopko@lee-associates.com
C: 973.219.3530

Licensed Real Estate Broker. All information furnished regarding property for sale, rental or financing is from sources deemed reliable, but no warranty or representation is made to the accuracy thereof and same is submitted subject to errors, omissions, change of price, rental or other conditions prior to sale, lease or financing or withdrawal without notice. No liability of any kind is to be imposed on the broker herein.

FOR SALE
6 ACRES OF LAND - 3 ARE BUILDABLE
16 ROUTE 206, AUGUSTA, NJ 07822



RETAIL			
1	WAWA	15	McGuire Chevrolet
2	QuikChek	16	Toyota World of Newton
3	Cailey Jewelers	17	BMW of Newton
4	Ideal Farm Garden Center	18	Sussex Honda
5	Set-N-Stone Flooring Store	19	Lowe's
6	Frankford Car Wash	20	Walmart
7	Cooper Electrical Supply	21	Staples
8	Hertz Car Rental	22	Dollar Tree
9	Pandora's Box Toys & Collectibles	23	Harbor Freight Tools
10	A's Country Spirits	24	Gamestop
11	The Lafayette Mill Antiques Center	25	Major Kia
12	Olde Lafayette Emporium	26	PetSmart
13	The Shoppes At Lafayette	27	Marshalls - HomeGoods
14	Subaru World Of Newton	28	ShopRite of Newton

FINANCIAL	
1	Visions Federal Credit Union
2	SB One Bank
3	Provident Bank
4	Assured Mortgage Bankers
5	Chase
6	Lakeland Bank
7	PNC Bank
8	Wells Fargo

FOR MORE INFORMATION CONTACT EXCLUSIVE BROKER:

Scott Deutchman
scott.deutchman@lee-associates.com
C: 201.913.4691

FOR FINANCING:

Gary Sopko
gary.sopko@lee-associates.com
C: 973.219.3530

Licensed Real Estate Broker. All information furnished regarding property for sale, rental or financing is from sources deemed reliable, but no warranty or representation is made to the accuracy thereof and same is submitted subject to errors, omissions, change of price, rental or other conditions prior to sale, lease or financing or withdrawal without notice. No liability of any kind is to be imposed on the broker herein.