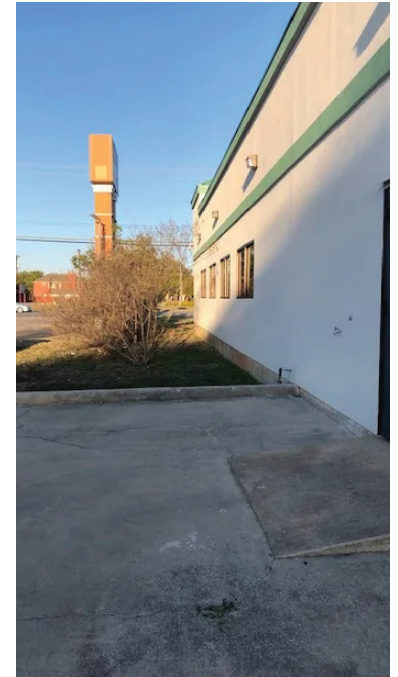


HIGHLIGHTS

High visibility on Bandera road frontage



ALL AVAILABLE SPACE(1)

SPACE	SIZE	TERM	RATE	SPACE USE	CONDITION	AVAILABLE
1st Floor	7,020 SF	5 Yrs	\$25.00 /SF/YR	Office	Full Build-Out	Now

Golden Apex Management-Diana Silva-210-884-4081

DESCRIPTION OF THE BUILDING

An outstanding opportunity for an owner-occupier or investor to acquire a very high-quality medical building was recently updated in 2018.

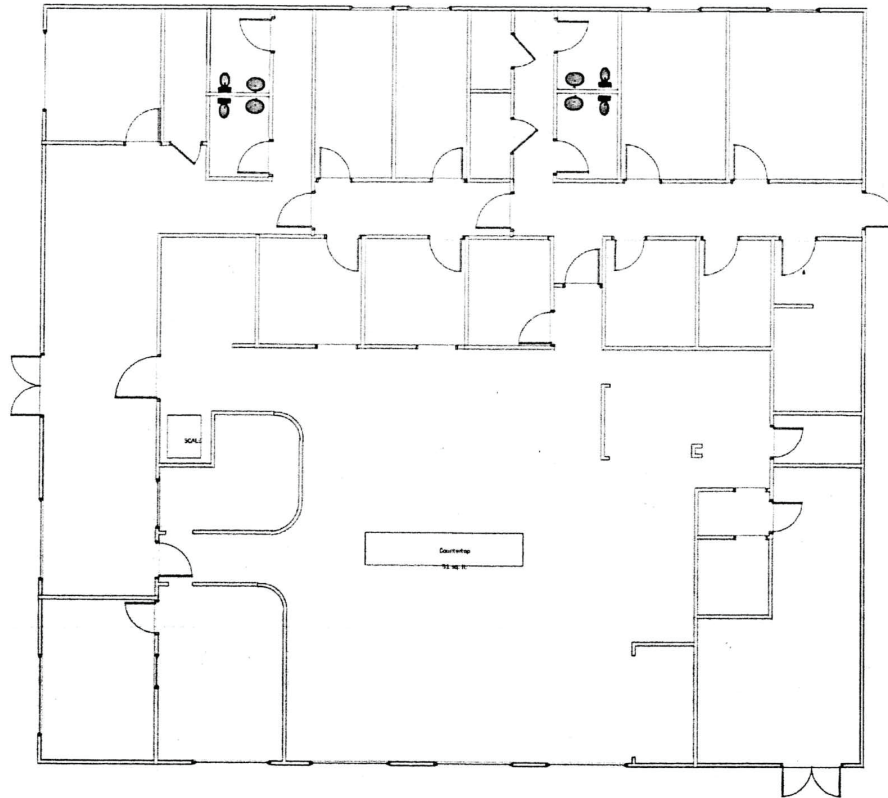
Furniture in place and available.

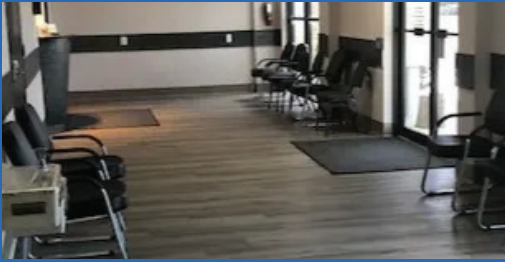
Fully equipped medical and/or office building.
7180 Bandera Road offers a beautiful, light-filled interior with attractively appointed polished wood floors and high-bay ceilings, along with 52 surface parking spaces.



PROPERTY OVERVIEW

Stand alone building on very high traffic Bandera Rd. near the medical center. Extra parking available if needed. Previously used for medical . 3 rooms are outfitted with leaded wall for diagnostics. High ceilings, wood floors, and ample parking.





PROPERTY FACTS

Building Type	Office
Building Height	1 Story
Building Class	B
Parking	52 Surface Parking Spaces

Year Built/Renovated	2004/2018
Building Size	7,020 SF
Typical Floor Size	7,020 SF

Golden Apex Management-Diana Silva-210-884-4081