

FOR LEASE



## PROPERTY DETAILS

920 W. Heritage Park Blvd., Layton, UT 84041

*Lease Rate: \$23.00/SF Full Service*

- 920 West building
  - » Suite 130: 1,985 SF
- 4.00/1,000 SF parking ratio
- In the center of Layton's commercial area
- Close to restaurants and Layton Hills Mall
- Competitive lease rates compared to other nearby properties
- Three minutes to I-15 at Antelope Drive (Exit 332) or Hill Field Road (Exit 331)
- Ample parking with convenient access

**NEWMARK****MOUNTAIN WEST****CHRIS FALK, CCIM, SIOR**[cfalk@newmarkmw.com](mailto:cfalk@newmarkmw.com)

direct 801.499.6514

[View Profile](#)**BRAXTON WILLIE, CCIM**[bwillie@newmarkmw.com](mailto:bwillie@newmarkmw.com)

direct 801.803.3334

[View Profile](#)**FULL SERVICE****COMMERCIAL REAL ESTATE**

1410 S University Park Blvd, Ste 120

Clearfield, Utah 84015

Office 801.578.5580

[www.newmarkmw.com](http://www.newmarkmw.com)

**920 WEST BUILDING**

Total Space Available	Suite 130: 1,985 SF
Parking	4.00/1,000 SF
Amenities	In the Center of Layton's Commercial Area Close to Restaurants and Layton Hills Mall
Lease Rate	\$23.00/SF Full Service

**NEWMARK****MOUNTAIN WEST****CHRIS FALK, CCIM, SIOR**

cfalk@newmarkmw.com

direct 801.499.6514

[View Profile](#)**BRAXTON WILLIE, CCIM**

bwillie@newmarkmw.com

direct 801.803.3334

[View Profile](#)**FULL SERVICE****COMMERCIAL REAL ESTATE**

1410 S University Park Blvd, Ste 120

Clearfield, Utah 84015

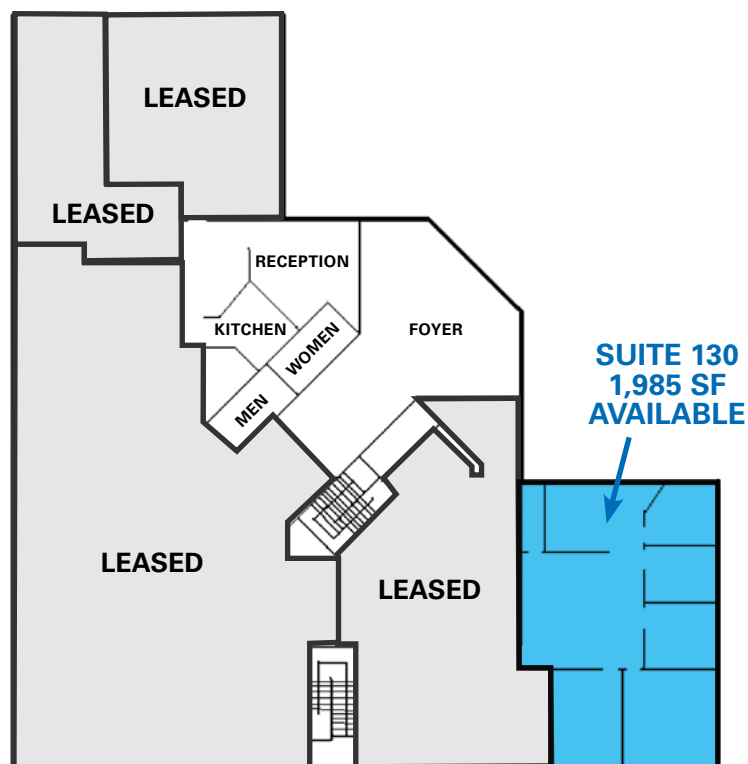
Office 801.578.5580

[www.newmarkmw.com](http://www.newmarkmw.com)



## | SITE PLAN

## FIRST FLOOR

920 West Building

## SECOND FLOOR



NEWMARK



MOUNTAIN WEST

**CHRIS FALK, CCIM, SIOR**

cfalk@newmarkmw.com

direct 801.499.6514

[View Profile](#)**BRAXTON WILLIE, CCIM**

bwillie@newmarkmw.com

direct 801.803.3334

[View Profile](#)**FULL SERVICE****COMMERCIAL REAL ESTATE**

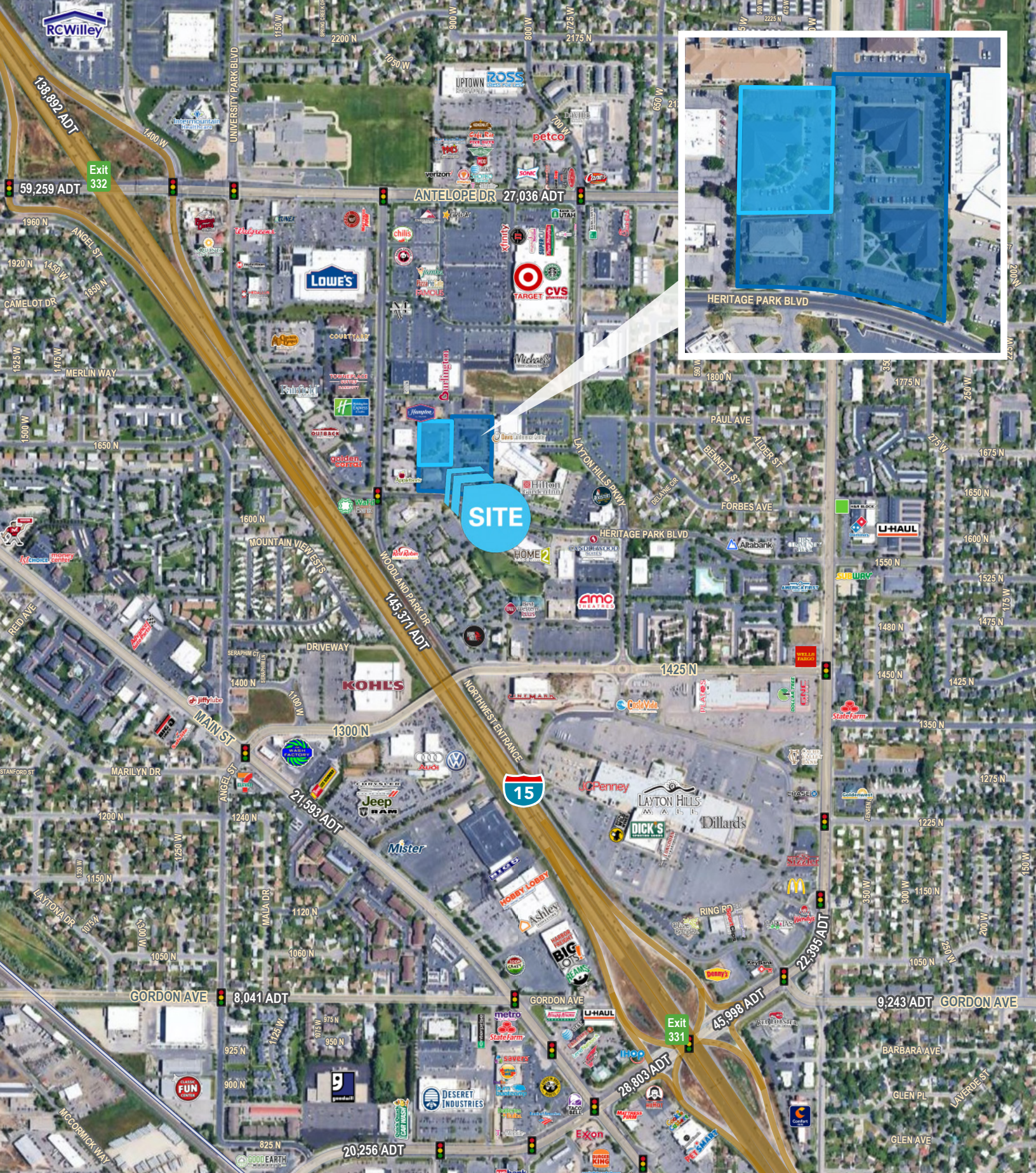
1410 S University Park Blvd, Ste 120

Clearfield, Utah 84015

Office 801.578.5580

[www.newmarkmw.com](http://www.newmarkmw.com)





**CHRIS FALK, CCIM, SIOR**  
 cfalk@newmarkmw.com  
 direct 801.499.6514  
[View Profile](#)

**BRAXTON WILLIE, CCIM**  
 bwillie@newmarkmw.com  
 direct 801.803.3334  
[View Profile](#)

**FULL SERVICE  
 COMMERCIAL REAL ESTATE**  
 1410 S University Park Blvd, Ste 120  
 Clearfield, Utah 84015  
 Office 801.578.5580  
[www.newmarkmw.com](http://www.newmarkmw.com)