



### PROPERTY DESCRIPTION

General/medical office space for lease. The Drummond Plaza Office Park consists of three individual buildings and is located along the heavily traveled Route 2 (Kirkwood Highway) across the street from the Red Mill Shopping Center. Building #3 is fully leased by a single tenant.

### AVAILABLE SUITES

- **First Floor: Fully Leased**
- **Second Floor:**
  - > Suite 1210: 2,070 SF
- **Third Floor:**
  - > Suite 1302: 2,860 SF
  - > Suite 1303: 2,547 SF
- **Lease Rate:** \$16.50/SF + Janitorial
- Signage available
- Great visibility!



For More Information, Contact:

Dan Wham  
dwham@dsmre.com  
302.283.1800 Office  
302.249.9744 Cell

Ryan Bree  
rbree@dsmre.com  
302.283.1800 Office  
302.668.5430 Cell

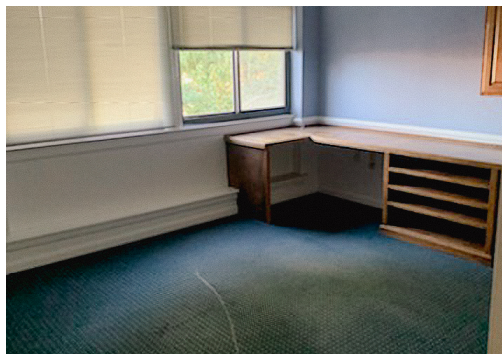
**DSM Commercial**  
Real Estate Services  
3304 Old Capitol Trail  
Wilmington, DE 19808  
dsmre.com



# DRUMMOND PLAZA OFFICE PARK: BUILDING 1 & BUILDING 3

1423 Capitol Trail  
Newark, DE 19711

# OFFICE SUITES FOR LEASE



For More Information, Contact:

Dan Wham  
dwham@dsmre.com  
302.283.1800 Office  
302.249.9744 Cell

Ryan Bree  
rbree@dsmre.com  
302.283.1800 Office  
302.668.5430 Cell

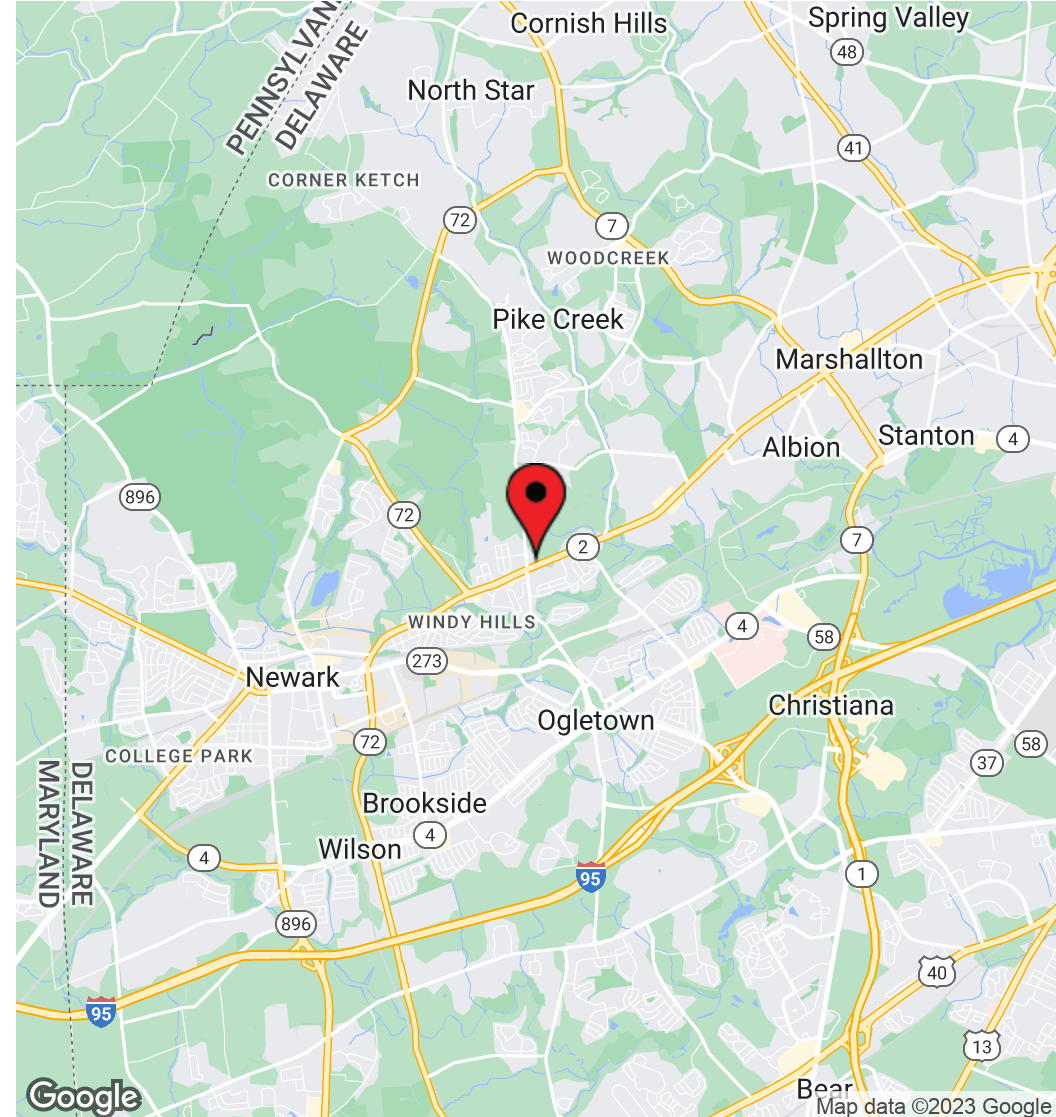
**DSM Commercial**  
Real Estate Services  
3304 Old Capitol Trail  
Wilmington, DE 19808  
dsmre.com



# DRUMMOND PLAZA OFFICE PARK: BUILDING 1 & BUILDING 3

1423 Capitol Trail  
Newark, DE 19711

# OFFICE SUITES FOR LEASE



For More Information, Contact:

Dan Wham  
dwham@dsmre.com  
302.283.1800 Office  
302.249.9744 Cell

Ryan Bree  
rbree@dsmre.com  
302.283.1800 Office  
302.668.5430 Cell

**DSM Commercial**  
Real Estate Services  
3304 Old Capitol Trail  
Wilmington, DE 19808  
dsmre.com