



(206) 328 - 3333
Jill@hunterscapital.com
HuntersCapital.com

Showcase Retail In Pike/Pine



1514 10th Ave

Seattle, WA 98122

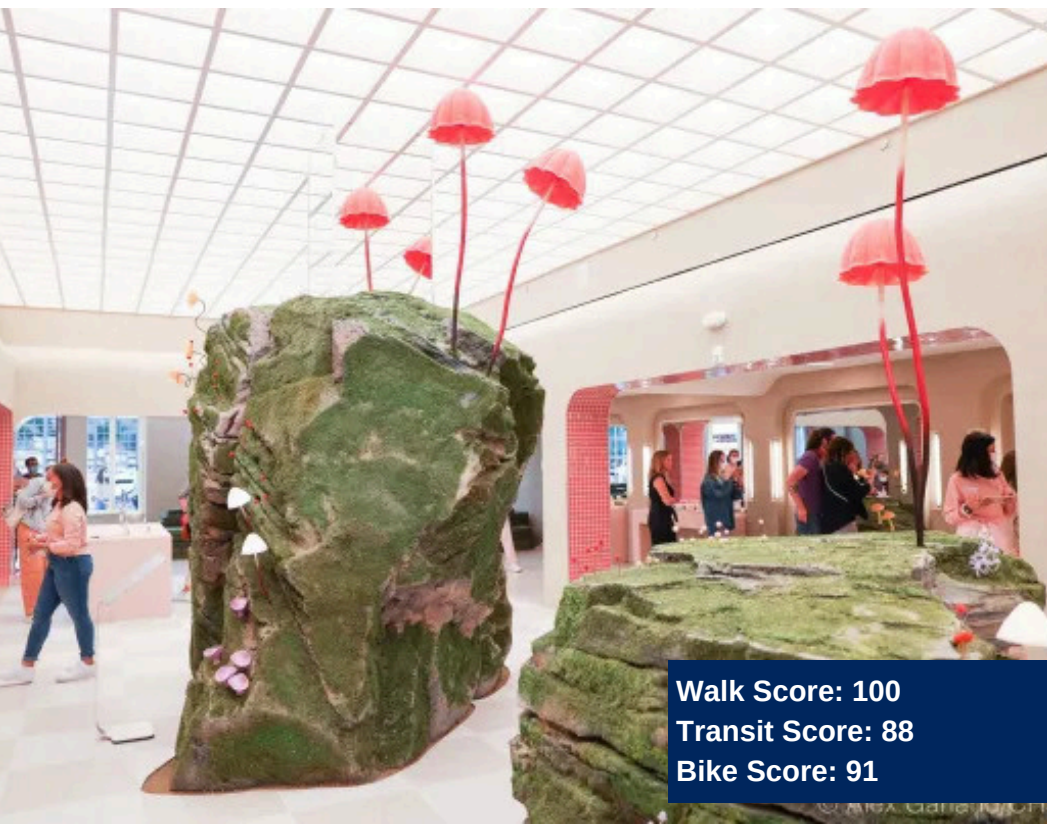
This 3,250 - 6,348 SF retail space is the perfect location for your next retail destination. Located across the street from the iconic Elliott Bay Book Company, this location benefits from heavy day and nighttime foot traffic. This heavy timber construction emulates Capitol Hill's historic Auto Row past and is ready for you.

Property Features

- \$47.00 PSF + \$12.76 NNN
- 6,348 SF, divisible to 3,250 SF (see page 6)
- 15 Tons of HVAC
- Large Storefront Windows
- Showroom floor
- Rear Delivery Entrance



6,348 SF



Walk Score: 100
Transit Score: 88
Bike Score: 91

Accessibility/Clientele

- Area has average individual income of \$100,000
- 32,000 neighborhood residents, 49% of which are between 25-44
- Easy Access to I-5 & I-90
- Monthly Parking Located One Block Away
- Located Across From Elliott Bay Book Company
- Two Blocks From Seattle Street Car
- Ample street parking with surface lots nearby



Elliott Bay Books



Molly Moon's



LTD Sushi
PC: Chad Quinn



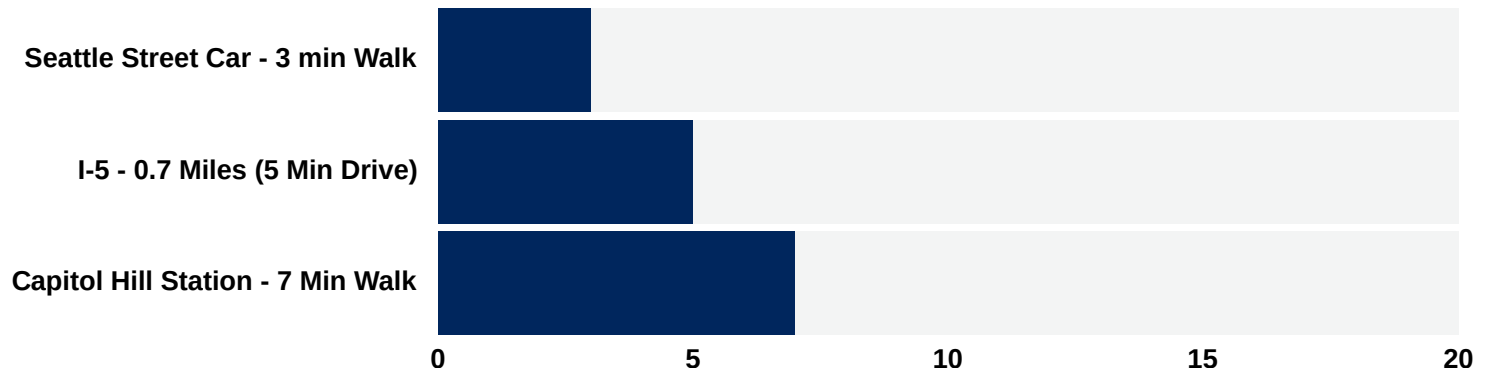
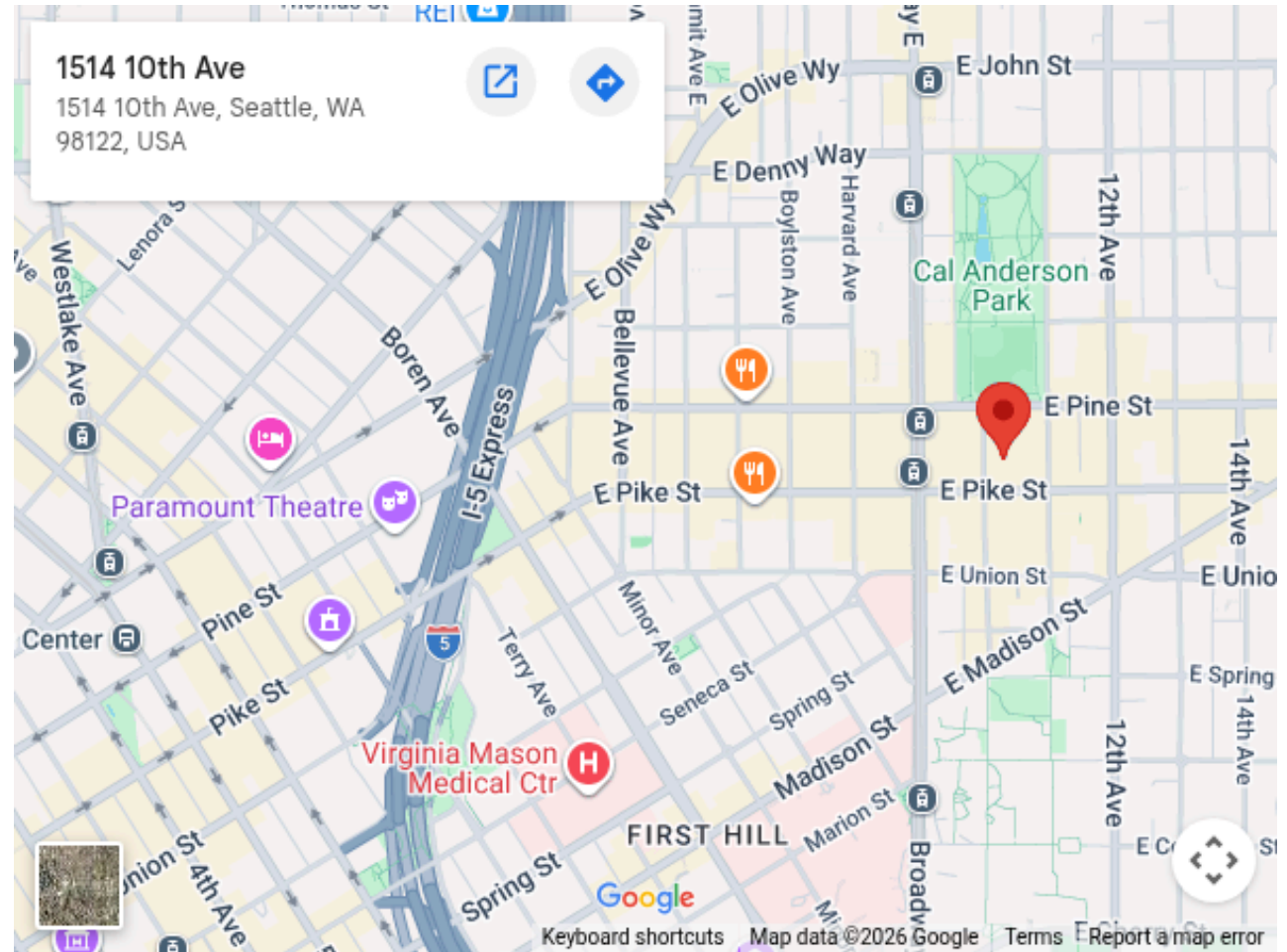
Cal Anderson Park

NEIGHBORHOOD

Amenities:

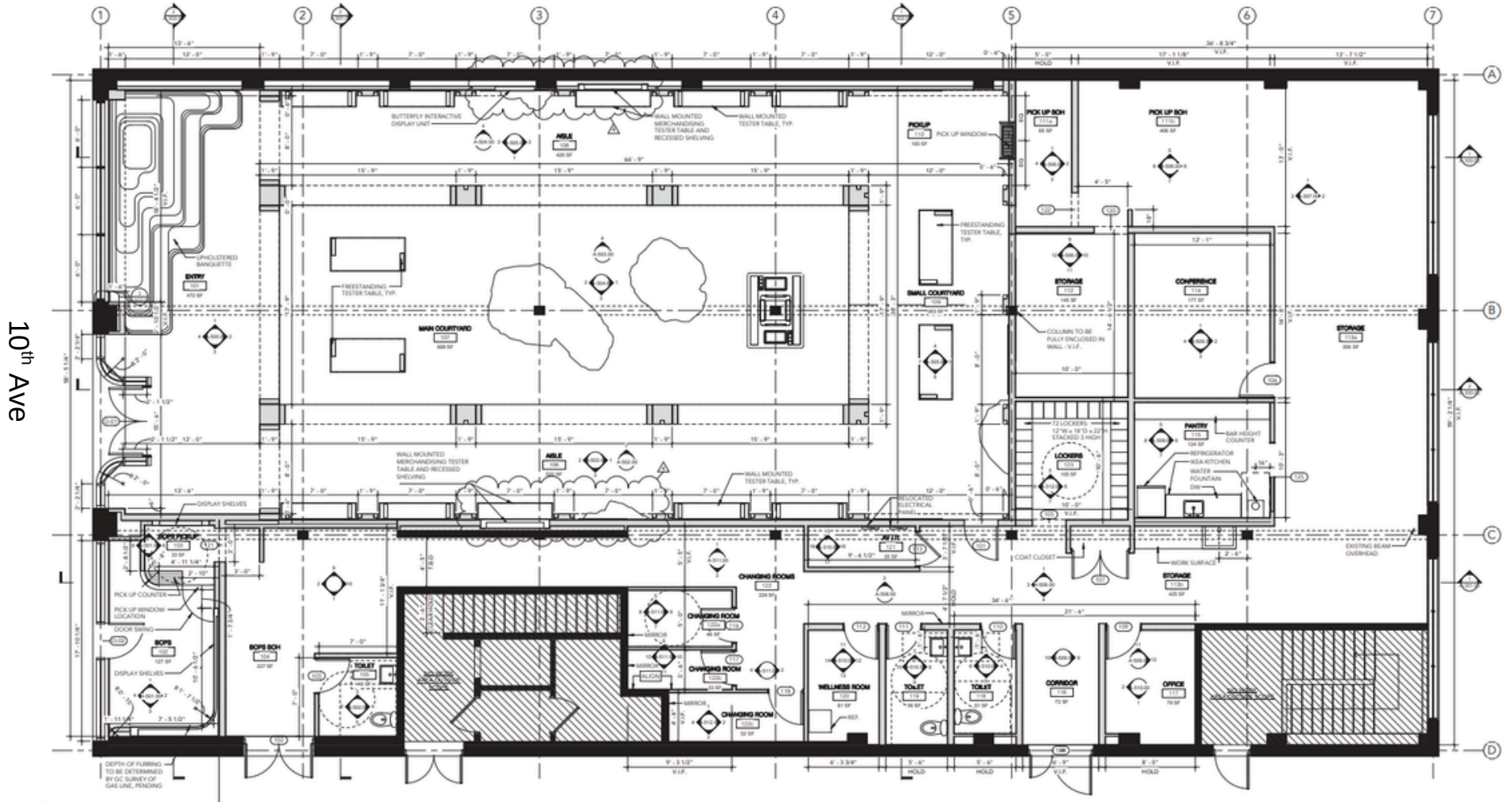
- **Neighboring Retail:**
 - Elliott Bay Book Company
 - Atelier Clothier
 - Joybird
 - Blick Art Materials
 - Le Labo
 - COUCH
 - Flowers For The People
 - Chophouse Row
 - Zion's Gate Records
 - Throwbacks Northwest
- **Restaurants/Bars:**
 - Poquitos
 - Oddfellows Cafe
 - LTD Sushi
 - Caffe Vita
 - Tacos Cometa
 - Jeffrey's
 - Via Tribunali
- **Arts & Culture**
 - Within [Capitol Hill Arts District](#)
 - [NW Film Forum](#)
 - [Neumos](#)
 - [AIDS Memorial Pathway](#)
 - [Vermillion Art Gallery & Bar](#)

And Much More!



FLOOR PLAN

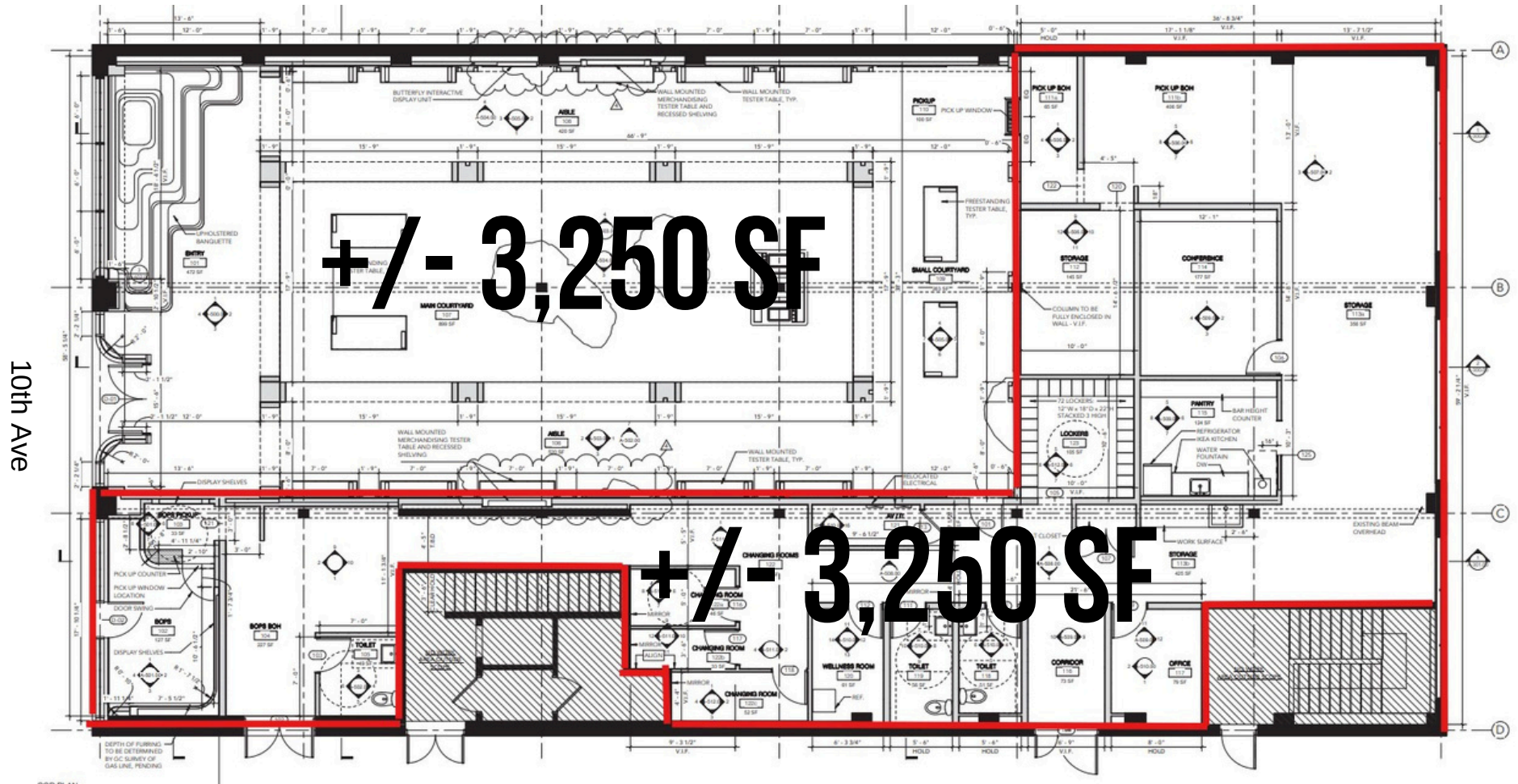
6,348 SF



Adjacent Breezeway

FLOOR PLAN

Potential Divide with est. SF



Adjacent Breezeway

[3D Tour of Outlined Area](#)

[3D Tour of Showroom](#)

URBAN INSPIRED
PRESERVATION MINDED
COMMUNITY DRIVEN

Hunters Capital preserves and revitalizes the character of Seattle's most historic neighborhoods. We pride ourselves in creating meaningful relationships with our tenants and driving community engagement within our wonderfully diverse city.

WE HAVE SPACE FOR YOU

Give us a call, or visit our website to learn more about our unique properties.

(206) 328 - 3333

www.hunterscapital.com

Jill@hunterscapital.com

1620 Broadway, Suite 200



Above: Current Storefront Entrance



SCAN TO VISIT OUR WEBSITE

