

**±3,630 Square Foot Office**

**±1.5 Acres Available | For Lease**

**Timmonsville, SC**

3116 N. Sally Hill Road



**FEATURES:**

- > Large Lot
- > Front, Side and Rear Parking Available
- > Immediate Access to Interstate 20
- > Highly Functional Layout

**PROPERTY SUMMARY:**

This ±3,360 square foot office building is located on N. Sally Hill Road in Timmonsville, SC. The interior amenities include: lobby, five private offices/conference rooms, two restrooms, large open bullpen.

For Lease \$2,600 (includes utilities)

FOR LEASE



135 S Dargan St. Suite 301 | Florence, SC 29506 | Phone (843) 667-4999 |

Fax (843) 667-1310 | [www.palmettocommercial.com](http://www.palmettocommercial.com)

No warranty or representation is made as to the accuracy of the information contained herein.



## 3116 N. Sally Hill Road



**TMS:** 151-00-01-180

**SITE SIZE:**  
±1.5 Acres

**COUNTY:**  
Darlington

**YEAR BUILT:**  
1995

**CONSTRUCTION:**  
Brick Exterior  
Interior Floors: Tile, Carpet and Concrete

**ZONING:**  
Unzoned

**UTILITIES:**  
City Water  
Septic

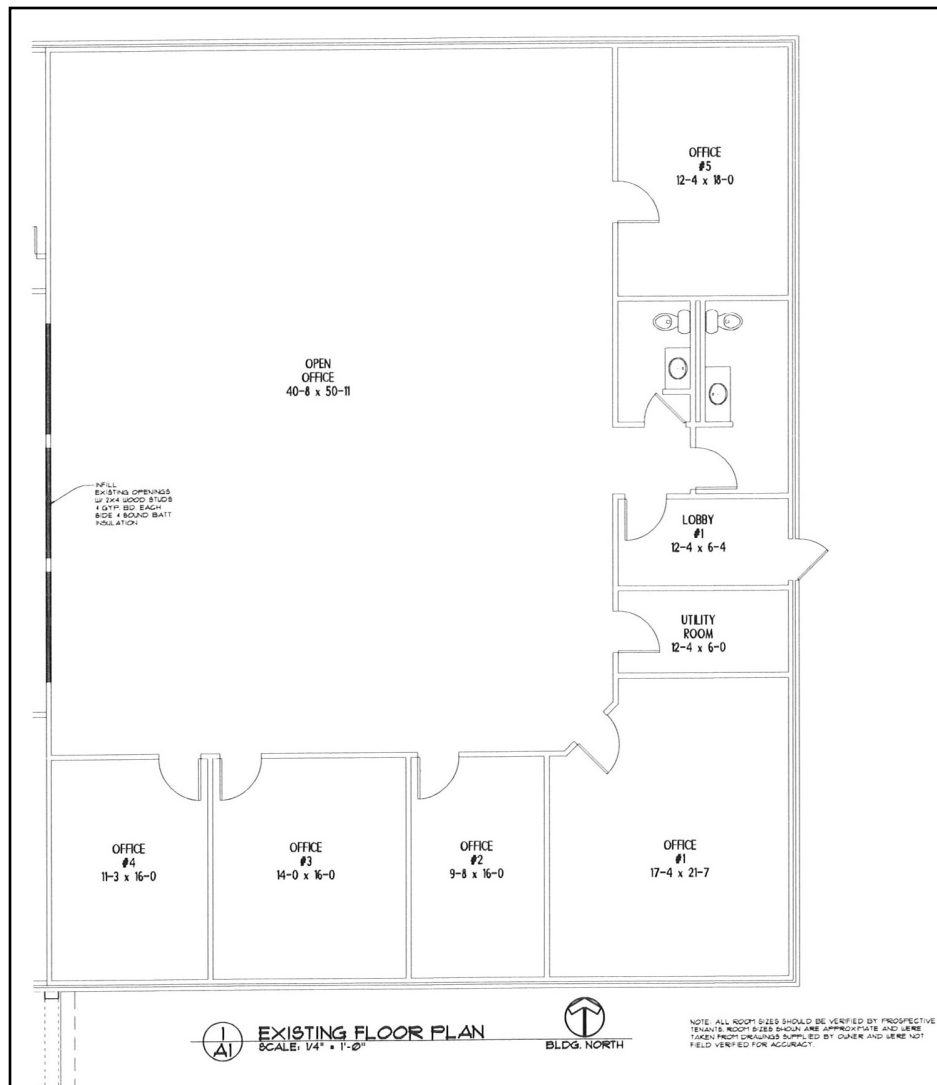


135 S Dargan St. Suite 301 | Florence, SC 29506 | Phone (843) 667-4999 |

Fax (843) 667-1310 | [www.palmettocommercial.com](http://www.palmettocommercial.com)

No warranty or representation is made as to the accuracy of the information contained herein.

# 3116 N. Sally Hill Road



135 S Dargan St. Suite 301 | Florence, SC 29506 | Phone (843) 667-4999 |

Fax (843) 667-1310 | [www.palmettocommercial.com](http://www.palmettocommercial.com)

No warranty or representation is made as to the accuracy of the information contained herein.



# 3116 N. Sally Hill Road

## AERIAL MAP



Distance to:

Interstate 95 -  $\pm 5$  Miles

Florence, SC -  $\pm 5.1$  Miles

Columbia, SC -  $\pm 70$  Miles



135 S Dargan St. Suite 301 | Florence, SC 29506 | Phone (843) 667-4999 |

Fax (843) 667-1310 | [www.palmettocommercial.com](http://www.palmettocommercial.com)

No warranty or representation is made as to the accuracy of the information contained herein.