

# Prime Commercial Property **FOR SALE**



**110 A** *Chadwick Square Court*

## Prime Office Condominium

This first-floor medical office condominium is located in the Chadwick Commons office park. Amenities include:

- Signalized ingress/egress on Greenville Hwy
- Currently occupied by medical group through 12/31/24
- Great south Hendersonville location near Downtown
- Located in a professional office park

*Call today for more information*

**Doug Trusilo** Trusilo Commercial, LLC  
53 Asheland Avenue, Suite 103 Asheville, NC 28801  
**Ph: (828) 713-4575**  
DougTrusilo@Trusilo.com



**Eric Goodman** Southern Commercial Real Estate  
303 S Church St, Hendersonville, NC 28792  
**Ph: (828) 692-7400 • Cell: (828) 388-1025**  
Realty1000@morrisbb.net

## 110A Chadwick Square Court • Hendersonville, NC



This ideal location is situated just south of Downtown Hendersonville on the Greenville Highway, within the Hendersonville city limits, making it very convenient and accessible to all parts of Hendersonville. Plenty of beautiful office space which is currently being used as a medical practice.

**110 A**

**Asking \$1,250,000**

This document is a marketing illustration only and subject to regulatory changes, matters of survey, errors, omissions, and change without notice. No warranties are expressed or implied. Not to scale. All information subject to buyer verification.

*Call today for more information*

**Doug Trusilo** Trusilo Commercial, LLC  
53 Asheland Avenue, Suite 103 Asheville, NC 28801  
**Ph: (828) 713-4575**  
DougTrusilo@Trusilo.com



**Eric Goodman** Southern Commercial Real Estate  
303 S Church St, Hendersonville, NC 28792  
**Ph: (828) 692-7400 • Cell: (828) 388-1025**  
Realty1000@morrisbb.net





# 110 A

89.5'

## Asking \$1,250,000



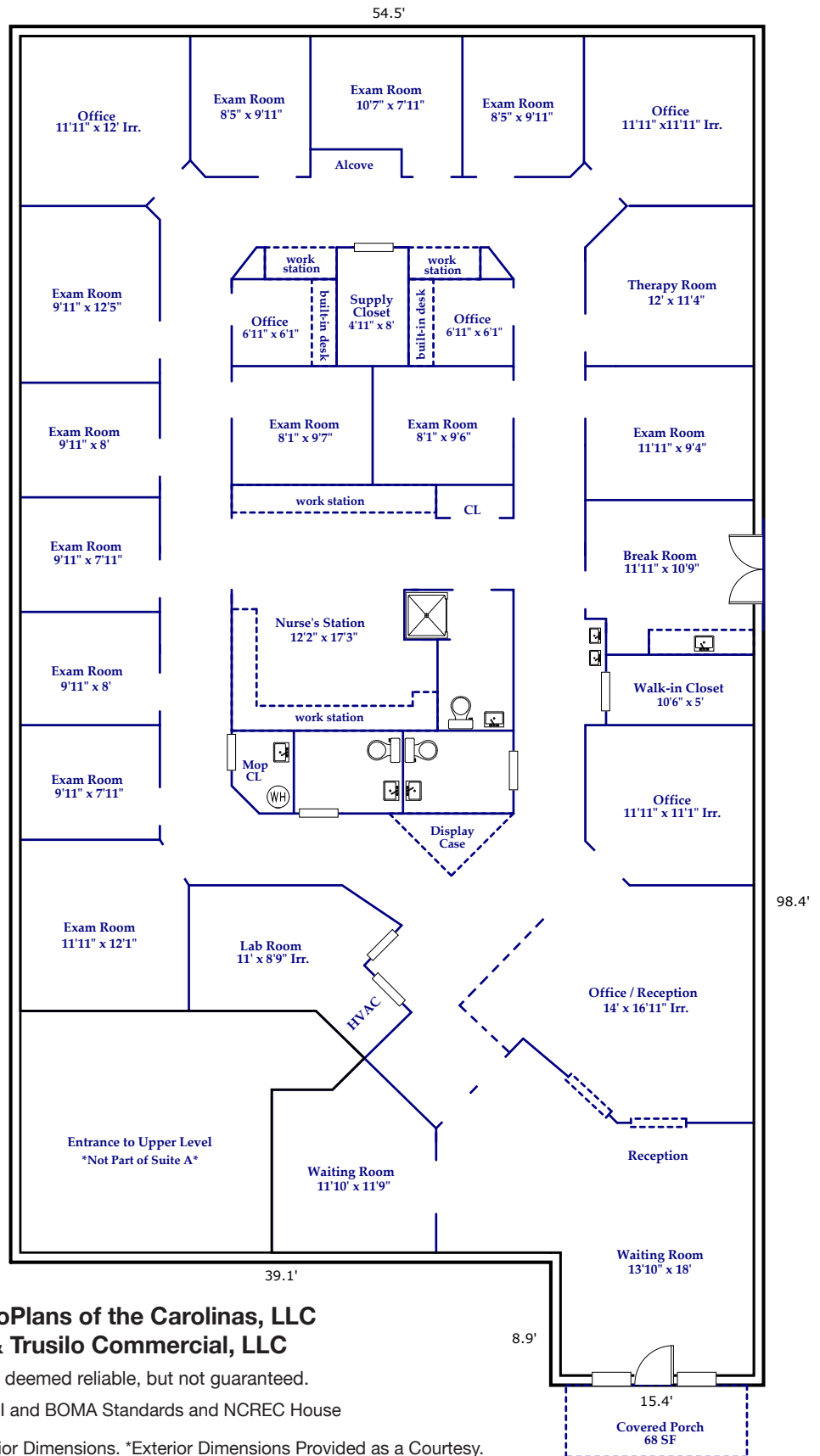
Gross Building Area: 4455 Sq ft

Prepared by Judy Brouillette-O'Neil: ProPlans of the Carolinas, LLC  
for Southern Commercial Real Estate & Trusilo Commercial, LLC

All dimensions are rounded to the nearest .01 and are deemed reliable, but not guaranteed.

Square Footage Calculations determined following ANSI and BOMA Standards and NCREC House  
Measuring Square Footage Guidelines.

\*Condominium Square Footage is Calculated from Interior Dimensions. \*Exterior Dimensions Provided as a Courtesy.



Call today for more information

**Doug Trusilo** Trusilo Commercial, LLC  
53 Asheland Avenue, Suite 103 Asheville, NC 28801  
**Ph: (828) 713-4575**  
DougTrusilo@Trusilo.com



**Eric Goodman** Southern Commercial Real Estate  
303 S Church St, Hendersonville, NC 28792  
**Ph: (828) 692-7400 • Cell: (828) 388-1025**  
Realty1000@morrisbb.net

